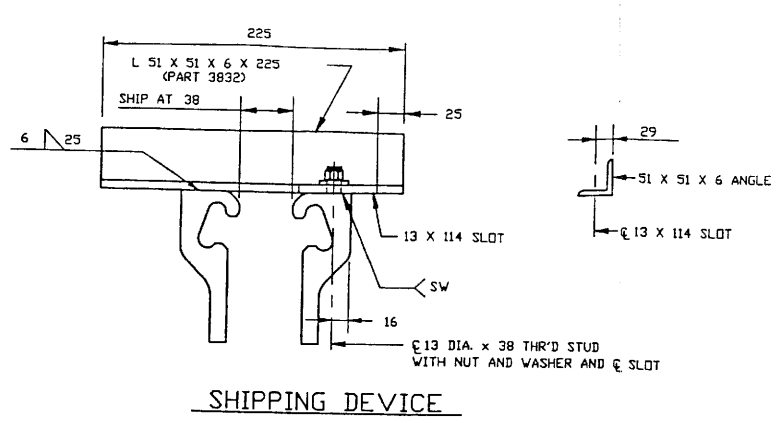
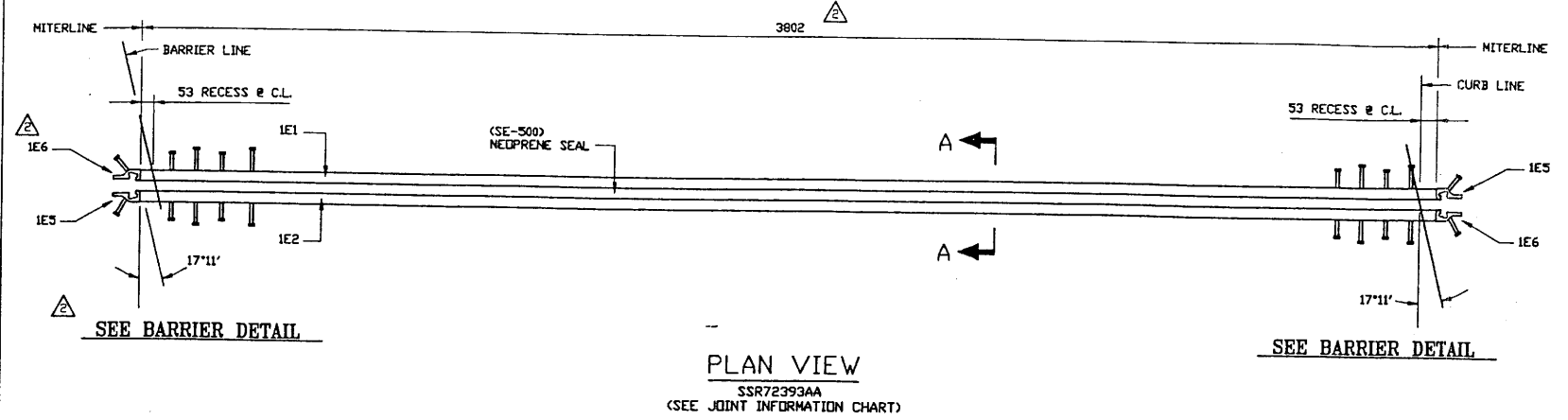


Orig of 2nd Submittal



- SHIPPING DEVICE**
- (1) CONTRACTOR SHALL REMOVE AFTER JOINT IS SET, GRIND WELDS SMOOTH AND TOUCH UP DAMAGED GALVANIZING.
 - (2) SHIPPING ANGLES SHALL BE SPACED 610 FROM MITER LINE AND 1220 O.C. THEREAFTER.

APPROVAL STAMP MUST BE
IN RED INK TO BE VALID

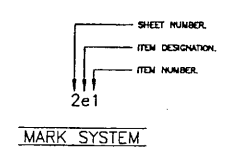
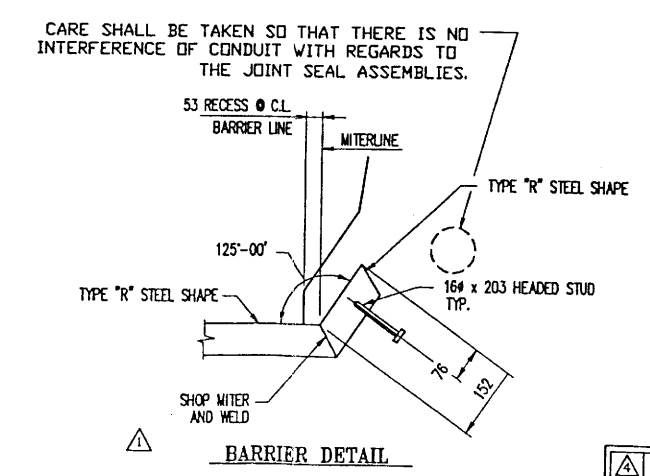
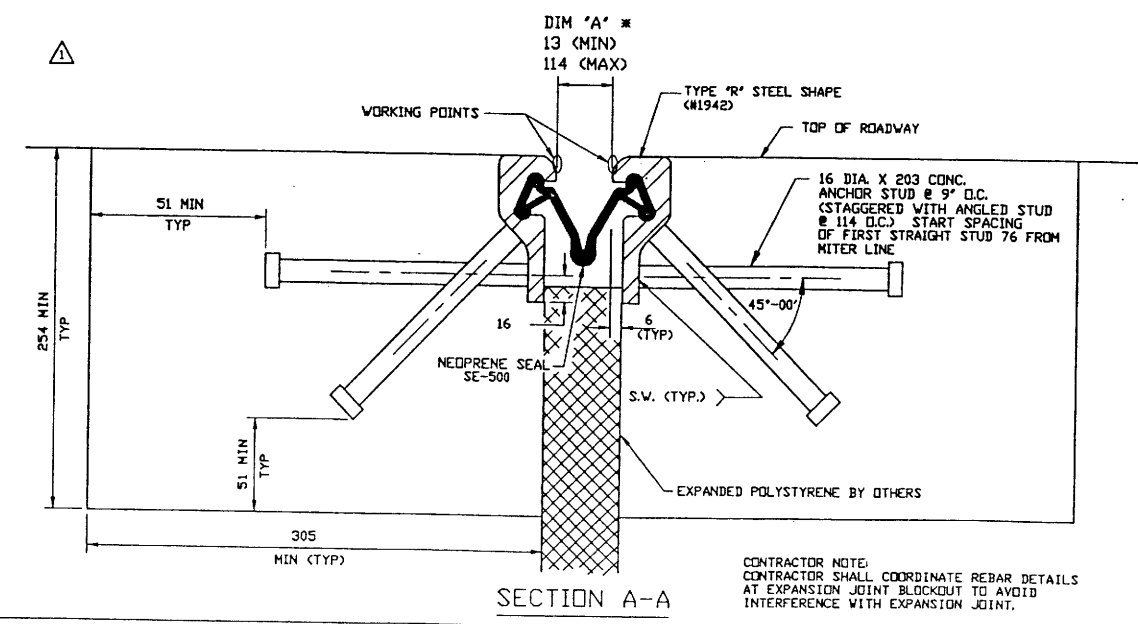
JOINT INFORMATION CHART											
WBA PRODUCT NO.	BRIDGE NO.	BRIDGE NAME	P.M.	QTY.	ROUTE	LOCATION	M.R.	SKEW	DIM "A"		
									WINTER	SPRING/FALL	SUMMER
SSR72393AA	55-953	TRABUCO CREEK	30.1	1	241	ABUT 1	100	17°11'17"	25	20	15
SSR72393AA	55-953	TRABUCO CREEK	30.1	1	241	ABUT 4	90	17°11'17"	25	20	15

APPROVED
PURSUANT TO SECTION 5-1.02
OF THE CALTRANS
STANDARD SPECIFICATIONS
MAY - 1 2000

COUNTY OF ORANGE
PUBLIC FACILITIES & RESOURCES DEPT.
DESIGN DIVISION

GENERAL NOTES

1. THE CONTRACTOR MUST VERIFY ALL DIMENSIONS PRIOR TO FABRICATION TO ENSURE ACCURACY OF THE EXPANSION JOINT.
2. ALL MATERIALS AND FABRICATION SHALL BE IN ACCORDANCE WITH THE 1995 STATE OF CALIFORNIA STANDARD SPECIFICATIONS AND THE PROJECT SPECIAL PROVISIONS, EXCEPT AS NOTED HEREIN.
3. ALL WELDING SHALL BE IN ACCORDANCE WITH THE CURRENT EDITION OF THE AWS WELDING SPECIFICATION D1.5.
4. THE EXPANSION JOINT ASSEMBLY, INCLUDING ANCHOR STUDS, SHALL BE HOT DIP GALVANIZED IN ACCORDANCE WITH ASTM A-123 AFTER FABRICATION.
5. THE NEOPRENE SEALS SHALL BE SHOP INSTALLED BY THE MANUFACTURER USING PRIMA LUB ADHESIVE AND SEAL INSTALLATION TOOLS. ADHESIVE SHALL BE APPLIED TO THE FULL PERIMETER OF THE WALLS OF THE STRIP SEAL CAVITY. FACTORY SPLICES SHALL BE PERMITTED. THE SEAL SHALL BE ONE CONTINUOUS PIECE, FIELD SPLICES WILL NOT BE PERMITTED.
6. THE EXPANSION JOINT OPENING SHALL BE PRESET BY THE MANUFACTURER TO 38 PRIOR TO SHIPPING. FINAL ADJUSTMENTS SHALL BE MADE IN THE FIELD BY THE CONTRACTOR, AT THE DIRECTION OF THE ENGINEER IN CHARGE, PRIOR TO FINAL CONCRETE PLACEMENT.
7. IN HOUSE STATE INSPECTION IS NOT REQUIRED.
8. SHIPPING CLAMPS SHALL BE GIVEN A SHOP COAT OF CLEAR LAQUER FOR PROTECTION AGAINST CORROSION.
9. SHOP SHALL TOUCH UP ANY DAMAGED GALVANIZED AREAS AS PER SPECIFICATIONS.



STATE: CALIFORNIA
COUNTY: ORANGE
DISTRICT: 12 ROUTE: 241
BRIDGE NO.: 55-953
W.O. NO.: EH23075
WBA PRODUCT NO.: SSR72393AA

REVISIONS	DATE	DESCRIPTION
REVISED PER MANUFACTURER	3/27/2000	TPL
REVISED TO SUIT APPROVAL	3/15/2000	TPL

THIS DRAWING AND THE DESIGN, DETAILS AND/OR ENGINEERING INFORMATION CONTAINED HEREON ARE THE PROPRIETARY PROPERTY OF WATSON EQUIMAN ACME AND ARE NOT TO BE REPRODUCED OR USED EXCEPT FOR THE PURPOSE FOR WHICH THEY HAVE BEEN FURNISHED. ALL RIGHTS OF DESIGN AND INVENTION ARE HEREBY RESERVED.

W.B.A. SSR W/ SE500 JOINT DETAILS

1 OF 2

B-18878

SSR72393AA		QTY: 2 REQD.		STRUCTURED BILL OF MATERIALS		DWC. NO: B-18878	
LV	PART NO.	METRIC QTY	NUM	METRIC DESCRIPTION	MATERIAL	REV.	
0	SSR72393AA	1.000	EA	SSR; SE500; Ø ABUT 1, 4; 3.90 LM (X	GALVANIZED		
					SHIPPING LENGTH= 3.9 LM (1.3FT+/-)		
1	SSR72393AA01	1.000	PK	EXTRUSION ASSEMBLIES (W			
1	SSR72393S1	1.000	EA	SEAL FOR ASSEMBLY	NEOPRENE		
2	094	4880.000	LM	SE-500 GLAND (C-3314-4)			
2	1942	8540.000	LM	SSR FM 1.25 X 3.25 C-15390 A36	A36		
2	6970	4.000	EA	THD STUD 1/2" x 1 1/2" AW A108 NP	A108		
2	4840	78.000	EA	CONC ANC ST 16 x 203 AW A108 NP	A108		
2	3832	10.000	EA	SHIPPING CLAMP 51x 51 x 225 C9077 (U			
2	SSR72393AA02	1.000	PK	PARTS FOR ASSEMBLY (U			
3	7521	4.000	EA	WASHER 13 F436 ZP AM	A-307		
3	7954	4.000	EA	NUT 13 H A325 ZP AM	A-325		
3	3471	1.000	EA	CRYSTAL CLEAR LAQUER #1301 (13 oz.)	FOR TEMP DEVICES		
3	3468	1.000	EA	PNT #2117 RUSTOLEUM GALV.	FOR TOUCH UP		

SSR72393AARW		QTY: 2 REQ'D.		STRUCTURED BILL OF MATERIALS		DWG. NO: B-18878	
LV	PART NO.	METRIC QTY	MUM	METRIC DESCRIPTION		MATERIAL	REV.
0	SSR72393AARW	1.000	EA	SSR; SE500; ● ABUT 1, 4; 3.90 LM (X		GALVANIZED	
1	SSR72393AA	1.000	PK	EXTRUSION ASSEMBLIES (W		SHIPPING LENGTH= 3.9 LM (1.3FT+/-)	
1	1942	610.000	LM	SSR FM 1.25 X 3.25 C-15390 A36		A36	
1	4640	2.000	EA	CONC ANG ST 16 x 203 AW A108 NP		A108	

APPROVAL STAMP MUST BE
IN RED INK TO BE VALID

STEP 6. Contractor shall remove shipping devices after concrete has set, grind welds smooth, and touch-up any damaged galvanizing.

178 +/-

6

SE-500 GLAND
MOVEMENT RATING - 127mm
(PRODUCT NO. 094)

STRIP SEAL IN
RELAXED POSITION

FOLD

FOLD

STRIP SEAL IN
FOLDED POSITION

STEEL SHAPE

PRIMA-LUB ADHESIVE

25- MIN. OPNG FOR FIELD
INSTALLING SEAL
(38 RECOMMENDED)

32

83

EDGE BEAM TYPE 'R'
ITEM # 1942

B-P2
SMAW

6

60°

FIELD WELD DETAIL

B-P3-GF
GMAW

6

6

60°

60°

G

NOTE: SHADED AREAS
TO BE WELDED

B-P3-GF
GMAW

6

6

60°

60°

SHOP WELD DETAILS

10 x 36





SEA

FIGURE 2

FIGURE 3

FIGURE 4

STATE: CALIFORNIA
COUNTY: ORANGE
DISTRICT: 12 ROUTE: 241
BRIDGE NO.: 55-953
W.O. NO.: EH23075
WBA PRODUCT NO.: SSR72393AA

  						DETAIL: TP DATE: 11/8/99
						CHECKED BY: LPT DATE: 11/9/99
REVISED PER MANUFACTURER NO. _____ DESCRIPTION _____ TPL 3/27/2000 NAME _____ DATE _____					PROJECT: THE TRABUCO CREEK BIKE TRAIL OVERCROSSING OVER STATE ROUTE 241.	SCALE: NTS WSA JOB NO.: 72393
REVISIONS THIS DRAWING AND THE DESIGN, DETAILS AND/OR ENGINEERING INFORMATION CONTAINED HEREON ARE THE PROPRIETARY PROPERTY OF WATSON BOWMAN ACME AND ARE NOT TO BE REPRODUCED OR USED EXCEPT FOR THE PURPOSES FOR WHICH THEY HAVE BEEN FURNISHED. ALL RIGHTS OF DESIGN AND INVENTION ARE HEREBY RESERVED.						SHEET NO.: 2 OF 2 DRAWING NO.: B-16878
					W.B.A. SSR W/ SE500 JOINT DETAILS	