

FILE NAME : G:\BridgeMaint\ProjectNo1 ER20260\AAB-Batched\Projects\3_LowerSARArea-Ph1\CAD\Revised\PlansbyCo1-TitleSheet.dgn

LEGEND

- Indicates existing.
- Indicates direction of traffic.
- ~~~~~→

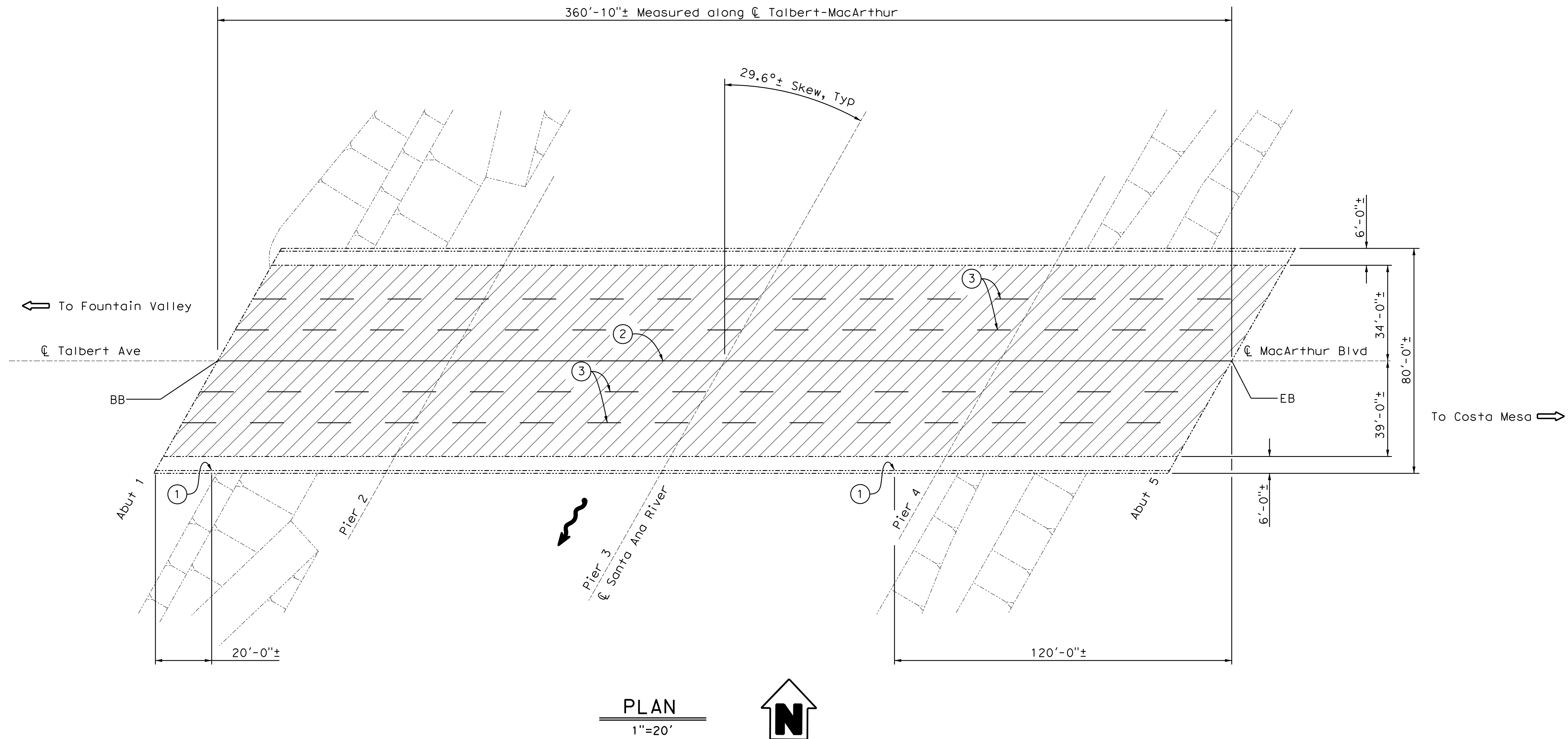
Indicates direction of flow.
- Indicates limits of clean and treat existing bridge deck with high molecular weight methacrylate.
- ①

Repair concrete spall on inside face of concrete railing at base of bridge mounted electrolier (total 2). See "Barrier Repair Detail" on "Miscellaneous Details" sheet.

- ②

Remove and replace existing striping and pavement markers per "Caltrans Standard Plan A20A Detail 21 And Detail 23".
- ③

Remove and replace existing striping and pavement markers per "Caltrans Standard Plan A20A Detail 9 and Detail 10".



NOTE:
THE CONTRACTOR SHALL VERIFY ALL
CONTROLLING FIELD DIMENSIONS
BEFORE ORDERING OR FABRICATING
ANY MATERIAL.

NO AS BUILT CHANGES



MARK	DESCRIPTION	DATE	APPR

PREPARED UNDER THE RESPONSIBLE CHARGE OF:

REGISTERED PROFESSIONAL ENGINEER
No. 73985
Exp. 6/30/15
STATE OF CALIFORNIA
CIVIL

DATE: 1/19/2014

CO PHUNG

DESIGNED BY: C. PHUNG	CHECKED BY: E. FRONDOSO
DRAWN BY: CP/KN	DRAWING CODE
FILE NAME:	SCALE: AS NOTED
PLOT DATE: 3/2/2014	
ORANGE COUNTY PUBLIC WORKS	CAPITAL PROJECTS

MAINTENANCE OF VARIOUS
BRIDGES IN ORANGE COUNTY
LOWER SANTA ANA RIVER
AREA BRIDGES - PHASE I
TALBERT - MACARTHUR
BRIDGE ACROSS
SANTA ANA RIVER
BR. NO. 55C-0097

