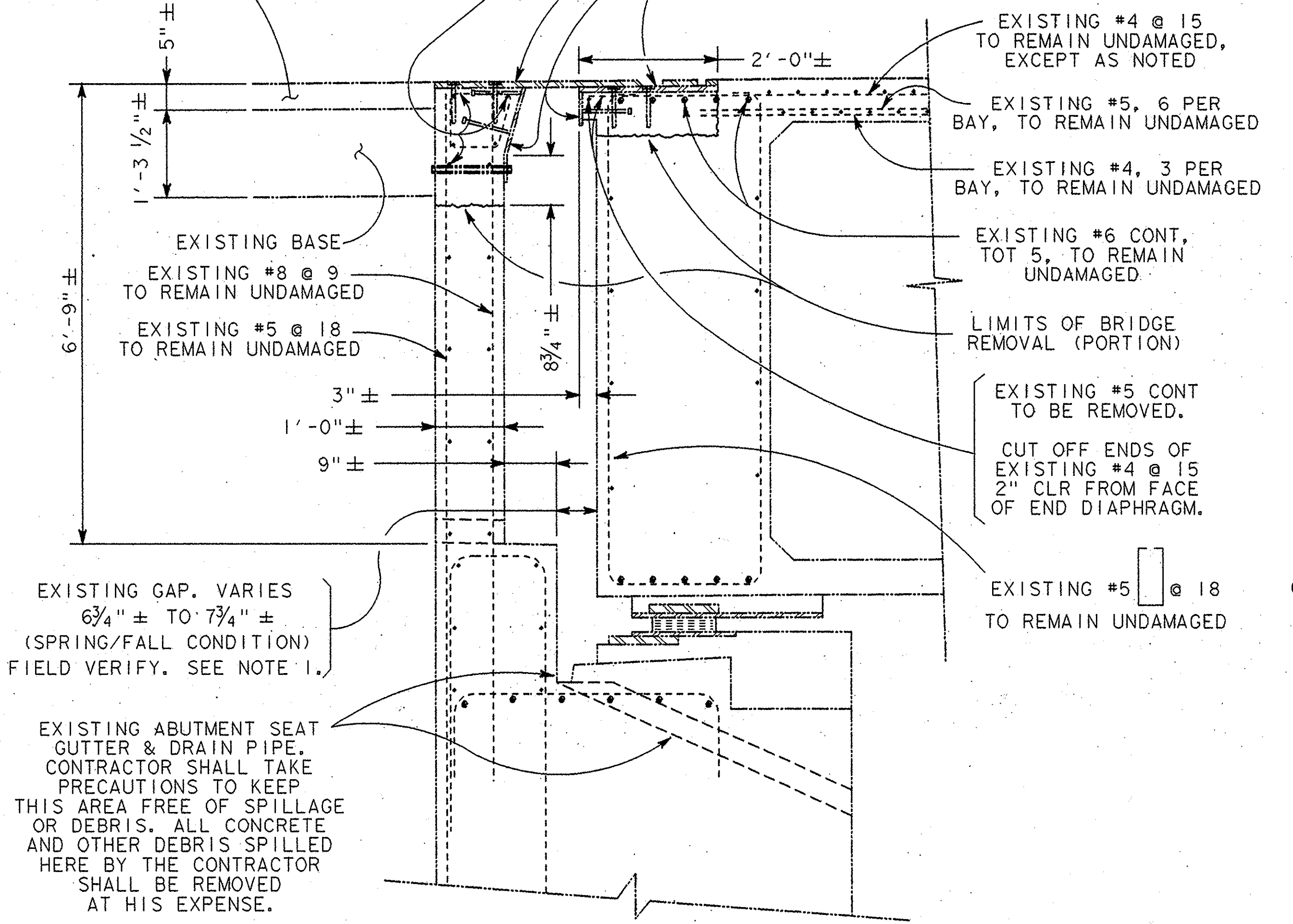


EXISTING #4 @ 18 TO BE REMOVED.
 EXISTING #4 CONT, TOT 6, TO REMAIN UN-DAMAGED WITHIN 3 FEET OF CURB AND BARRIER RAIL. BALANCE TO BE REMOVED.
 EXISTING AC PVMT

REMOVE ALL EXISTING MISCELLANEOUS METAL (EXPANSION PLATES, COVER PLATES, STUDS, BOLTS) BETWEEN CURB AND BARRIER RAIL. ALL COVER PLATES (1" THICK) SHALL BE SALVAGED.



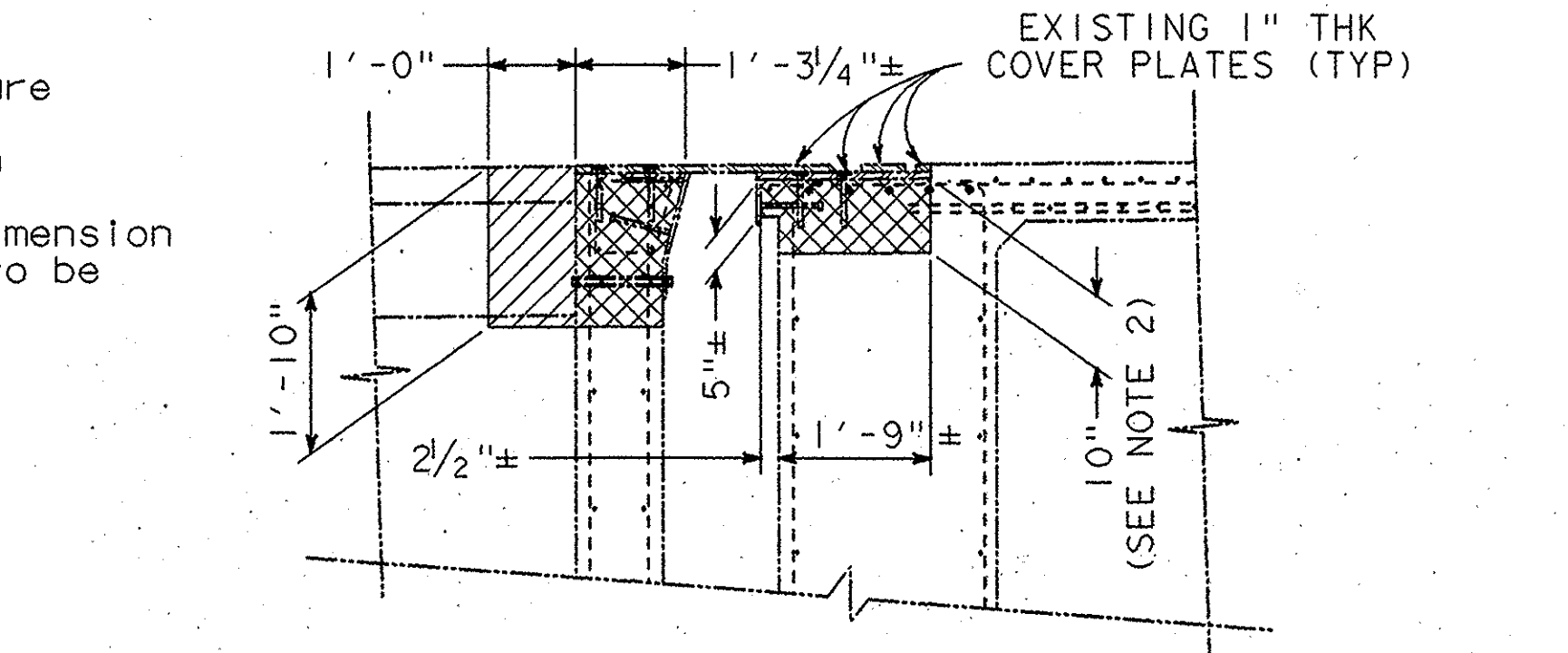
TYPICAL EXISTING ABUTMENT SECTION B-B

$\frac{3}{4}'' = 1'-0''$

LEGEND:
 - - - - - Denotes existing structure
 ———— Denotes new construction
 ± Indicates approximate dimension of existing structure, to be verified by contractor.

NOTE:
 ALL DIMENSIONS ON THIS SHEET ARE NORMAL TO JOINT CENTERLINE

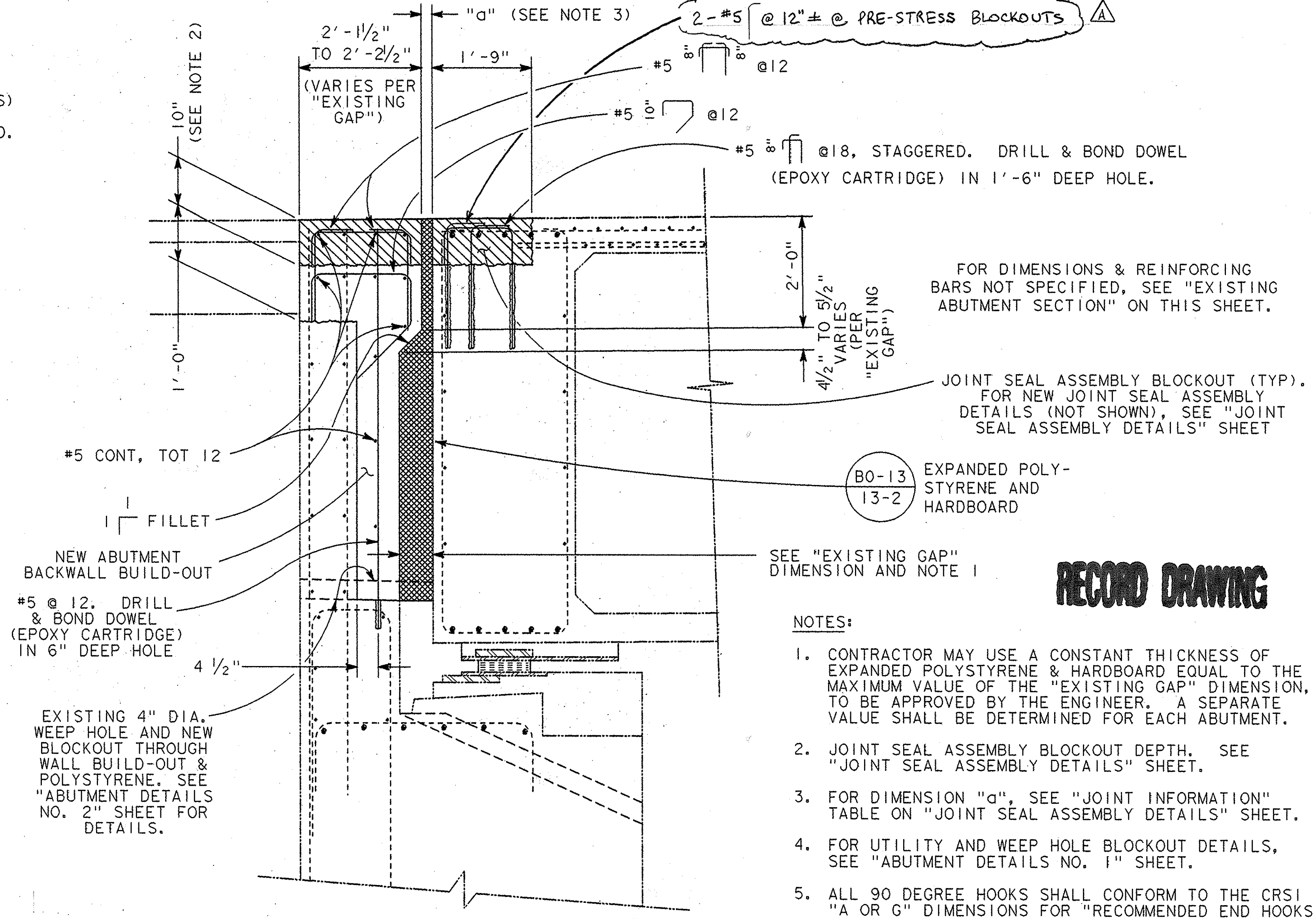
NOTE:
 THE CONTRACTOR SHALL VERIFY ALL CONTROLLING FIELD DIMENSIONS BEFORE ORDERING OR FABRICATING ANY MATERIAL.



LIMITS OF PAYMENT
 EXCAVATION & BRIDGE REMOVAL (PORTION)

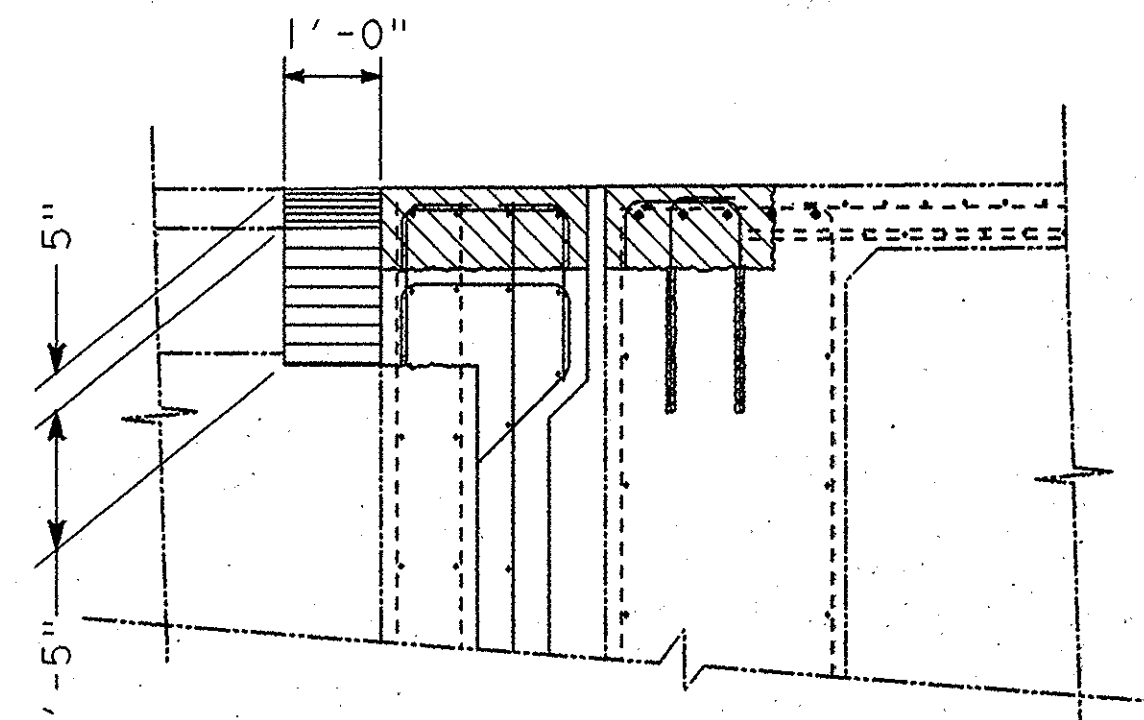
$\frac{1}{2}'' = 1'-0''$

FOR DIMENSIONS & REINFORCING BARS NOT SPECIFIED, SEE DETAILS, ABOVE.



TYPICAL NEW ABUTMENT SECTION B-B

$\frac{3}{4}'' = 1'-0''$



LIMITS OF PAYMENT
 ASPHALT CONCRETE & AGGREGATE BASE

$\frac{1}{2}'' = 1'-0''$

- NOTES:**
- CONTRACTOR MAY USE A CONSTANT THICKNESS OF EXPANDED POLYSTYRENE & HARDBOARD EQUAL TO THE MAXIMUM VALUE OF THE "EXISTING GAP" DIMENSION, TO BE APPROVED BY THE ENGINEER. A SEPARATE VALUE SHALL BE DETERMINED FOR EACH ABUTMENT.
 - JOINT SEAL ASSEMBLY BLOCKOUT DEPTH. SEE "JOINT SEAL ASSEMBLY DETAILS" SHEET.
 - FOR DIMENSION "d", SEE "JOINT INFORMATION" TABLE ON "JOINT SEAL ASSEMBLY DETAILS" SHEET.
 - FOR UTILITY AND WEEP HOLE BLOCKOUT DETAILS, SEE "ABUTMENT DETAILS NO. 1" SHEET.
 - ALL 90 DEGREE HOOKS SHALL CONFORM TO THE CRSI "A OR G" DIMENSIONS FOR "RECOMMENDED END HOOKS", UNLESS OTHERWISE NOTED.
 - CONCRETE STRENGTH: ALL CONCRETE SHALL BE $f'c=5000$ psi.

LEGEND:

	Structure Excavation (Bridge)
	Aggregate Base
	Asphalt Concrete
	Bridge Removal (Portion)
	Joint Seal Assembly Blockout

RECORD DRAWING

ORANGE COUNTY PUBLIC FACILITIES AND RESOURCES DEPARTMENT	
ABUTMENT DETAILS NO. 2	
DESIGNED: Rich Holington	SHEET 4 OF 6
DRAWN: Rich Holington	CHECKED: Ed Kwan
SCALE: AS SHOWN	DATE: 7/12/00
DRAWING NO.	

10/20/02 AS-BUILT

REVISIONS

PREPARED UNDER RESPONSIBLE CHARGE OF:

PROFESSIONAL ENGINEER
 Robert W. Holington, Jr.
 No. C-02287
 Exp. 12/31/04
 DATE: 9/12/00