

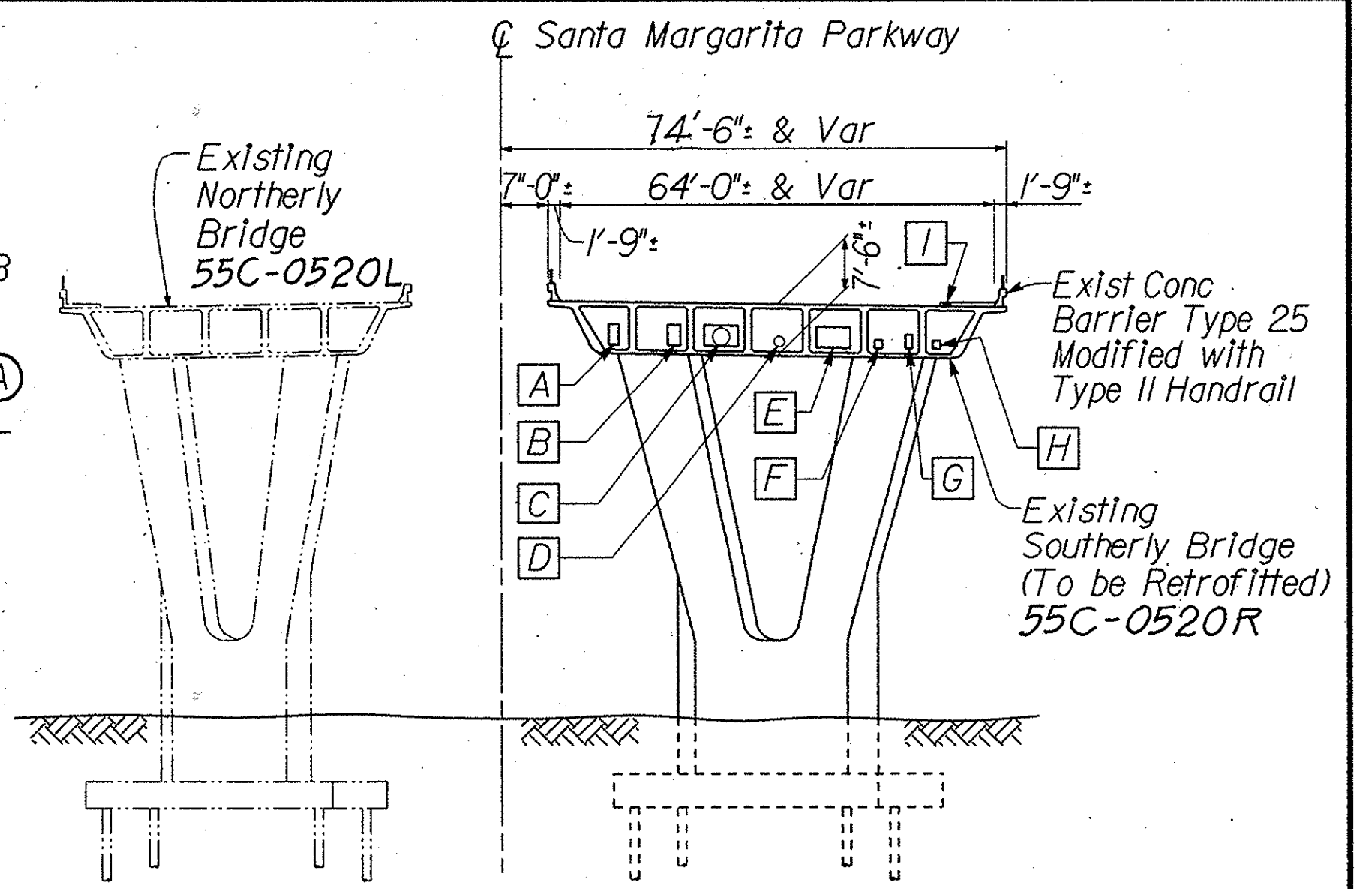
Datum Elev 700.00
 235 236 237 238 239 240 241 242 243 244 245 246 247

ELEVATION
 1"=60'

NOTE: SOUTHERLY BRIDGE SHOWN ONLY

CL CURVE DATA
 R= 2100.00
 Δ= 46° 27' 12"
 L= 1702.60'
 T= 901.22'

RETROFIT CODES
 (A) DECK JOINT RETROFIT @ ABUTMENT
 (B) DECK JOINT RETROFIT @ HINGE



TYPICAL SECTION
 1"=20'

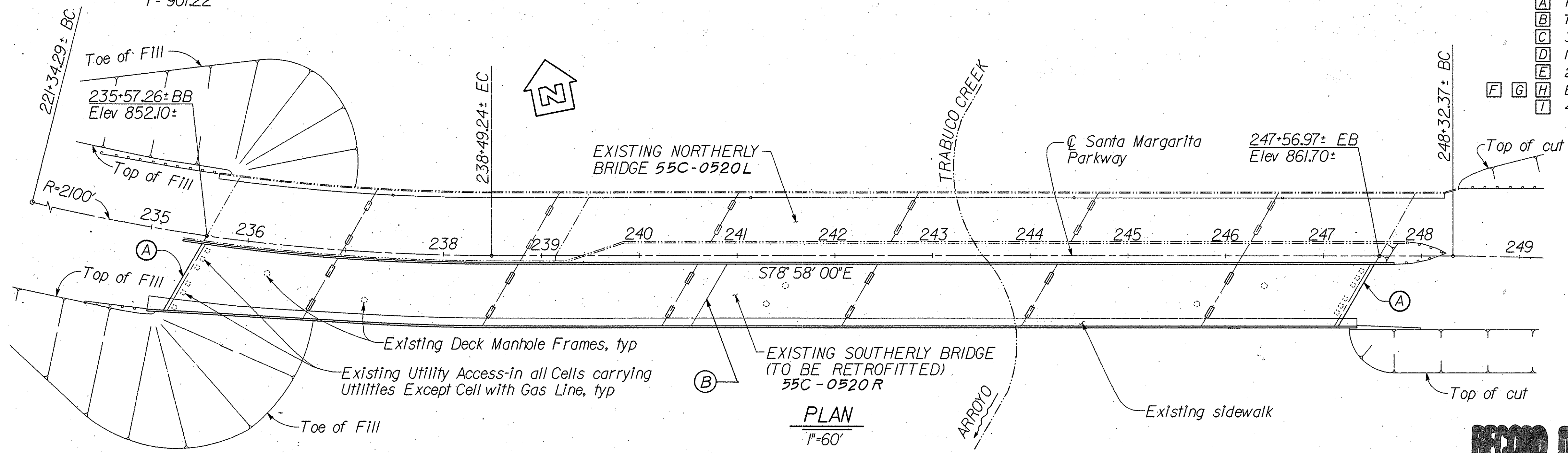
EXISTING UTILITIES AND OWNERS
 (CONTRACTOR SHALL VERIFY)

- (A) TELEPHONE LINE - PACIFIC BELL
- (B) TELEPHONE LINE - PACIFIC BELL
- (C) 30" WATER LINE - SANTA MARGARITA WATER DISTRICT
- (D) 10" GAS LINE - SOUTHERN CALIFORNIA GAS COMPANY
- (E) 2-18" SEWER LINES - SANTA MARGARITA WATER DISTRICT
- (F) (G) (H) ELECTRIC LINE - SOUTHERN CALIFORNIA EDISON COMPANY
- (I) 4-2" PVC CABLE LINES - COX COMMUNICATIONS

GENERAL NOTES
LOAD FACTOR DESIGN

DESIGN: BRIDGE DESIGN SPECIFICATIONS (1983 AASHTO with INTERIMS and REVISIONS by CALTRANS)

REINFORCED CONCRETE:
 Existing Superstructure (Assumed)
 fy = 66,000 psi
 f'c = 4,100 psi
 Existing Substructure (Assumed)
 fy = 66,000 psi
 f'c = 4,790 psi
 New Concrete
 fy = 60,000 psi
 f'c = 5,000 psi



PLAN
 1"=60'

RECORD DRAWING

1/2 0 1 2
 3 inches on original drawing

NOTE: The Contractor shall verify all controlling field dimensions before jacking the bridge, ordering or fabricating any material. See Special Provisions for Construction Sequence.

| | | | | | |
|---|-----------------|---|---------|--------------|--|
| ORANGE COUNTY ENVIRONMENTAL MANAGEMENT AGENCY | | SANTA MARGARITA PARKWAY BRIDGE DECKJOINT RETROFIT | | GENERAL PLAN | |
| MARK | DATE | DESCRIPTION | | | |
| REVISIONS | | | | | |
| PREPARED UNDER SUPERVISION OF | | | | | |
| | | | | | |
| DESIGNED | RICH HOISINGTON | | DATE | 3/13/00 | |
| DRAWN | H. PHAM | | CHECKED | E. KWAN | |
| SCALE | DATE | DRAWING NO. | | SHEET | |
| AS SHOWN | 7/12/00 | | | 2 OF 6 | |

Design: P:\names\user\2\1625\smgpln1.dgn
 Plotted on: 22-SEP-1992 16:28
 Generated by: USER\MINKS*****