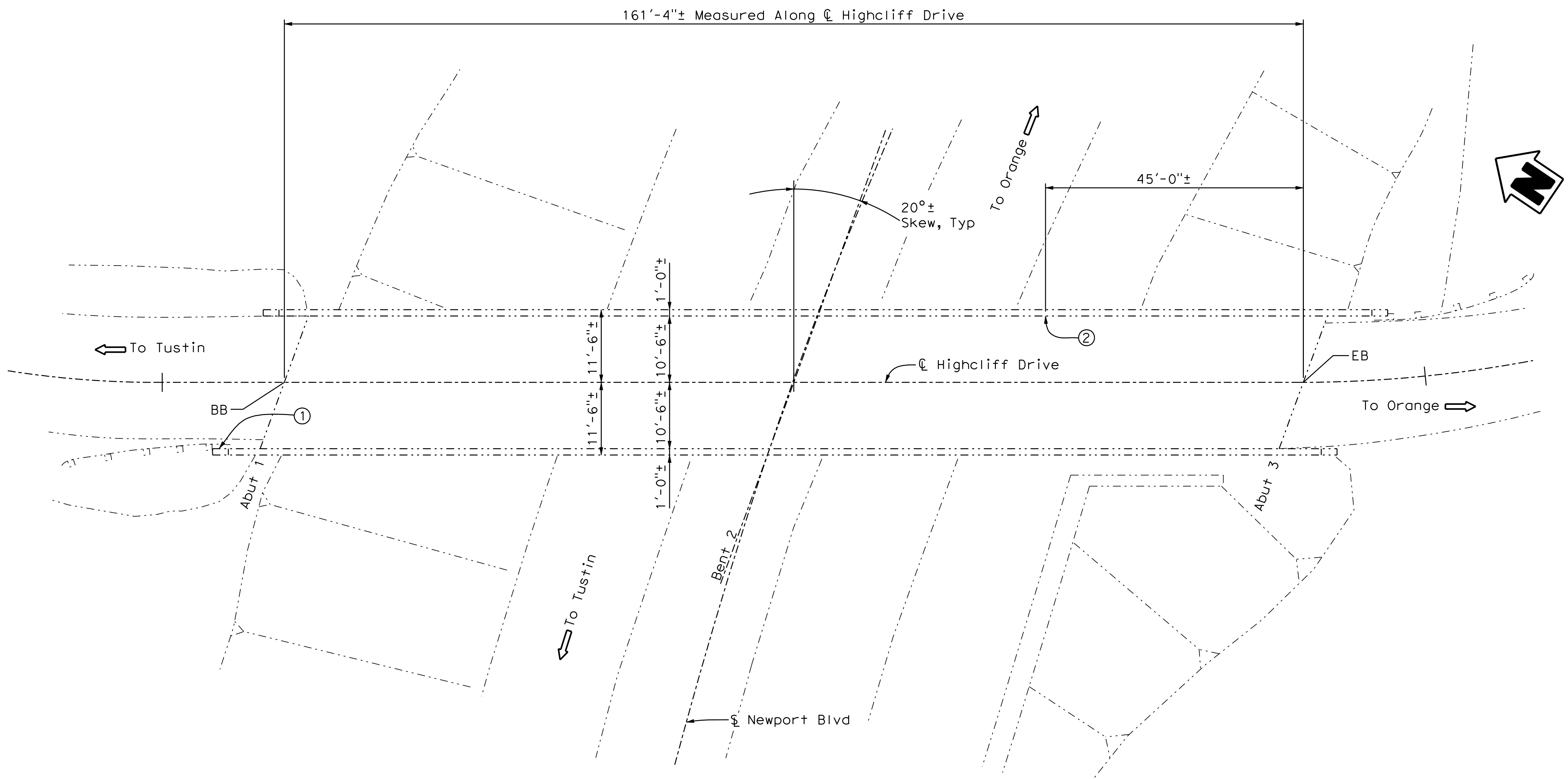


LEGEND

- Indicates existing.
- ➡ Indicates direction of traffic.
- ① Repair concrete spall of barrier railing end post. See "End Post Repair Detail" on "Miscellaneous Details" sheet.
- ② Repair concrete spall on inside face of barrier approximately 45 feet from EB. See "Barrier Rail Repair Detail" on "Miscellaneous Details" sheet.



PLAN

1" = 10'-0"

Note:
Existing ground conditions have been updated to reflect changes after the As-Built drawings were recorded.

NOTE:
THE CONTRACTOR SHALL VERIFY ALL CONTROLLING FIELD DIMENSIONS BEFORE ORDERING OR FABRICATING ANY MATERIAL.

NO AS BUILT CHANGES



MARK	DESCRIPTION	DATE	APPR.

PREPARED UNDER THE RESPONSIBLE CHARGE OF:

REGISTERED PROFESSIONAL ENGINEER
Oscar E. Henriquez
No. CS9008
State of California
Civil

O. HENRIQUEZ

12/10/10

DATE

DESIGNED BY: O. HENRIQUEZ

CHECKED BY: M. MARTIN

DRAWN BY: HV / RE

DRAWING CODE:

FILE NAME:

PLOT DATE: 12/10/10

SCALE: AS NOTED

ORANGE COUNTY
PUBLIC WORKS

PREPARED BY:
McLEAN & SCHULTZ
3040 Saturn Street, Ste 105
Brea, CA 92821

MAINTENANCE OF VARIOUS
BRIDGES IN ORANGE COUNTY

SANTIAGO CANYON AREA
BRIDGES - PHASE I

HIGHCLIFF DRIVE POC
OVER
NEWPORT BOULEVARD

BR. NO. 55C-0125

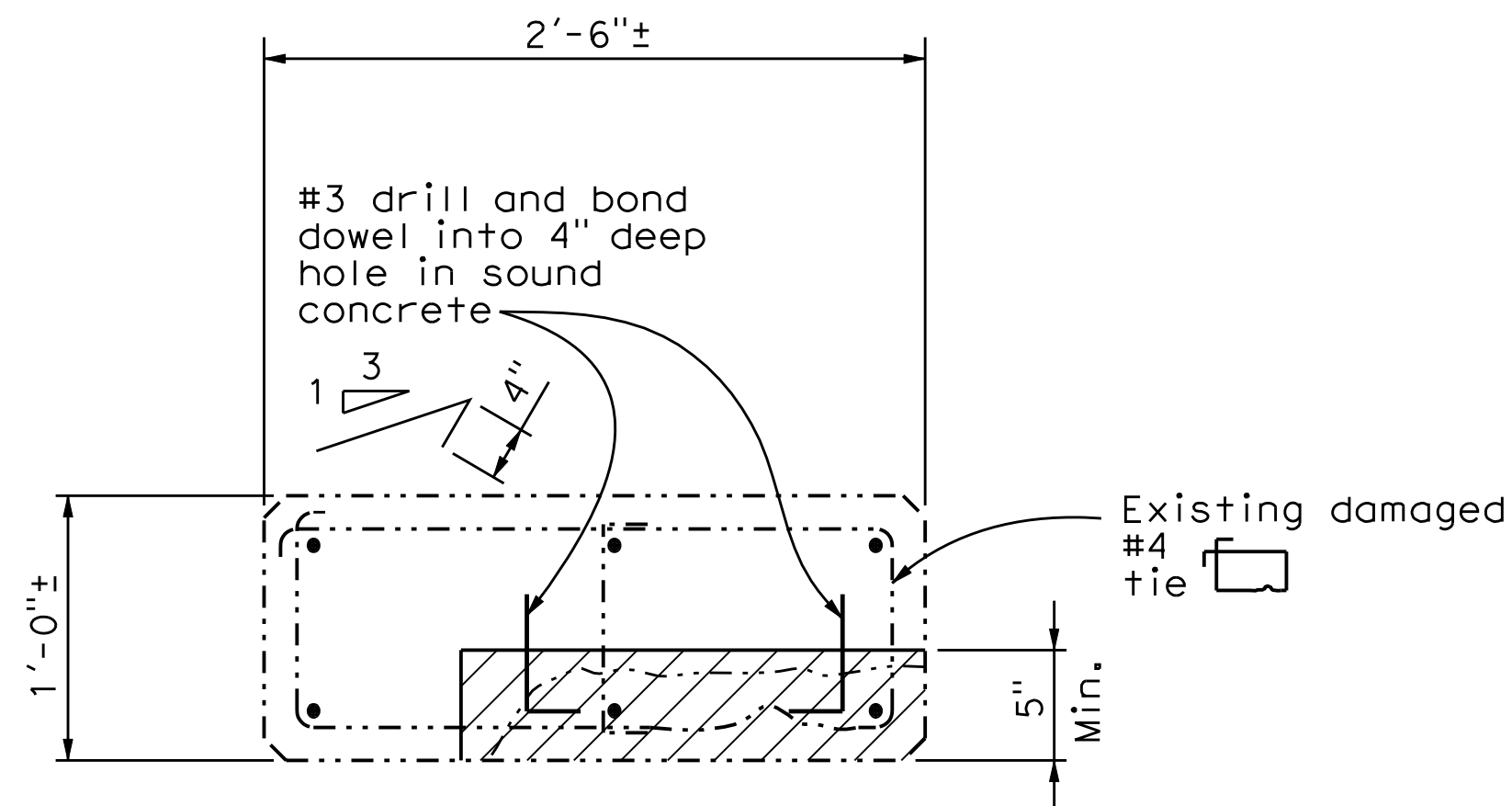
SHEET
REFERENCE
NUMBER

GENERAL PLAN

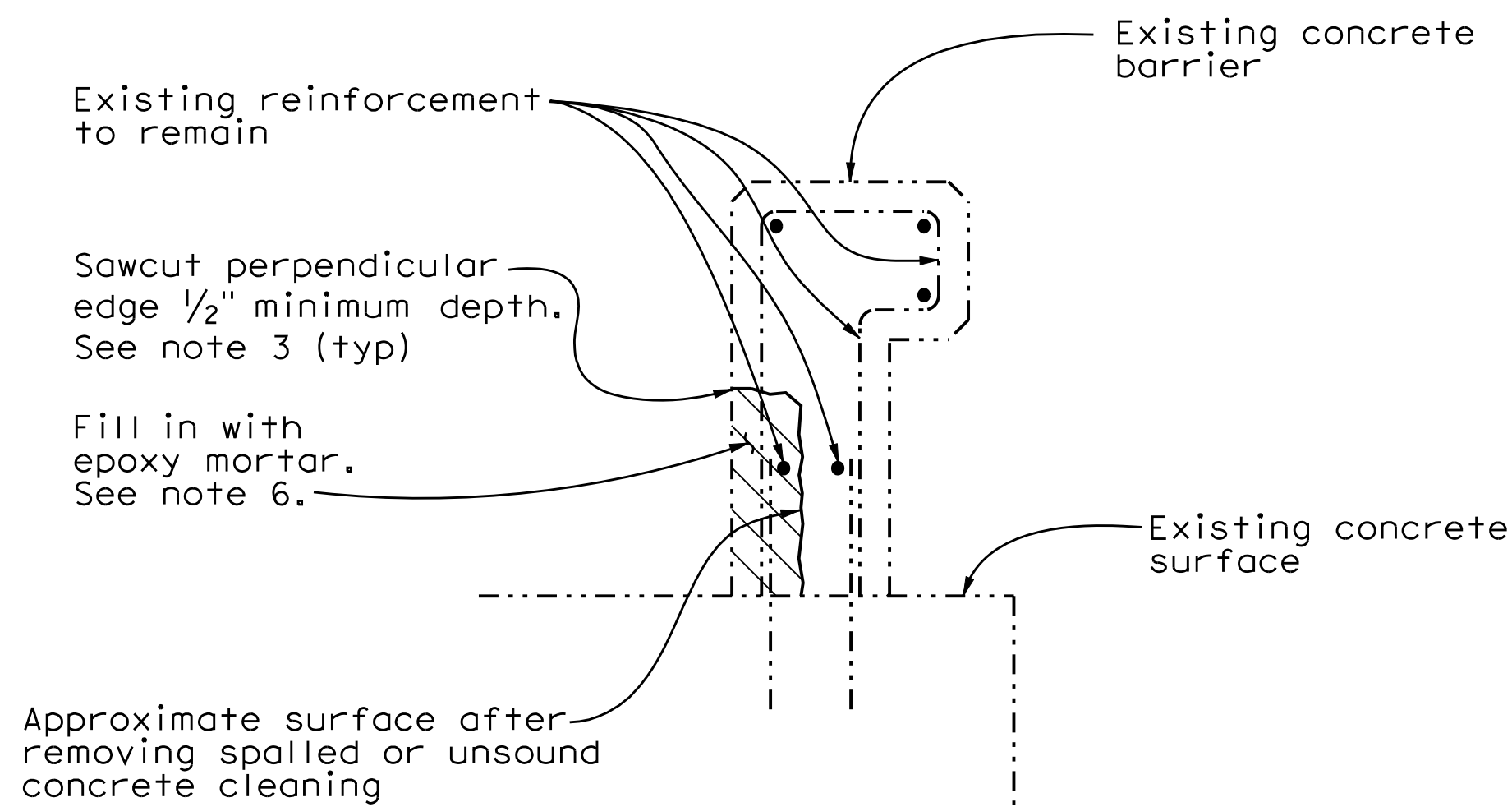
Sheet 2 of 7
SHEET 1 OF 2

Notes:

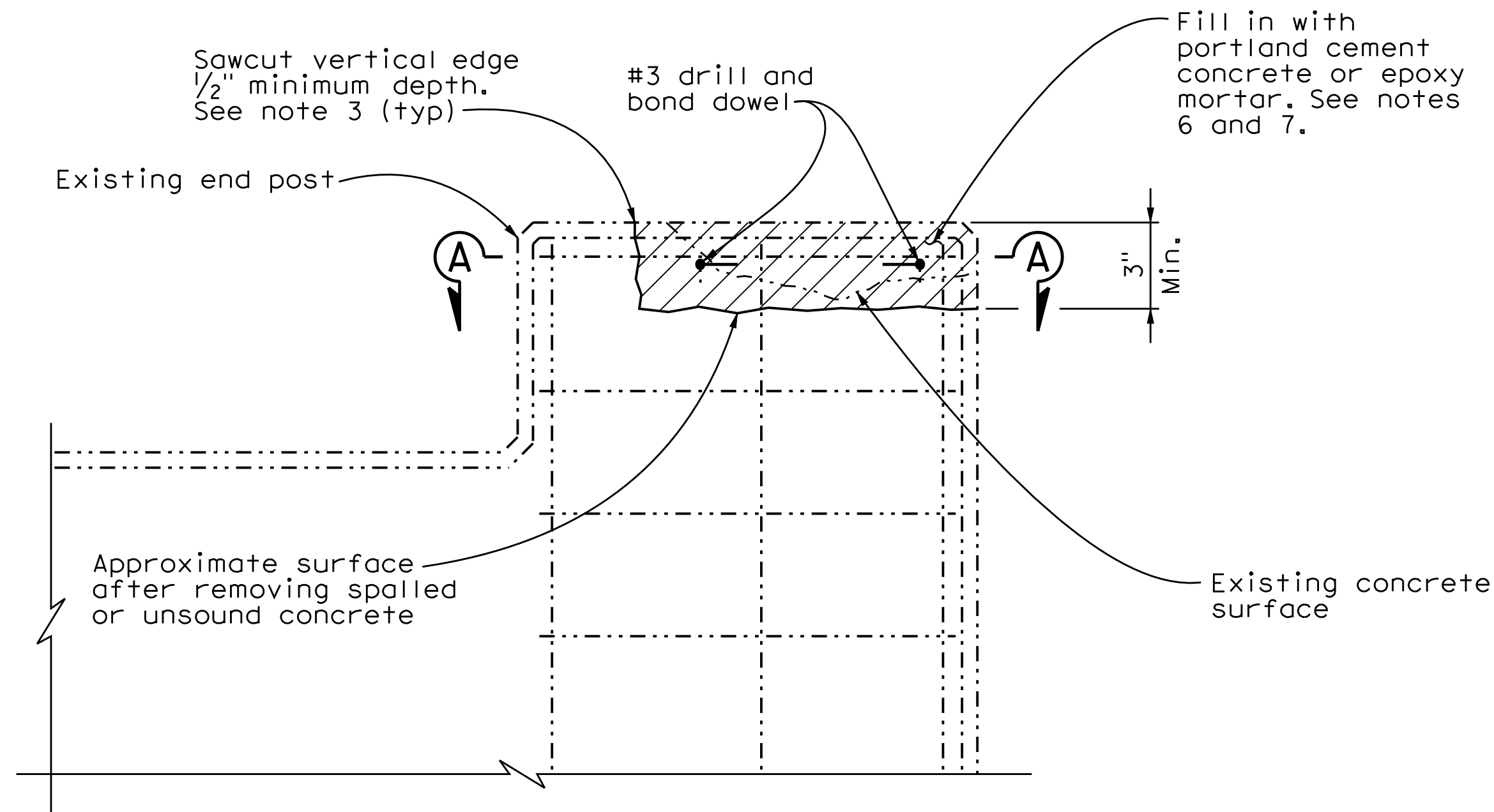
- Existing reinforcement shall be protected in place during unsound concrete removal operations.
- It is the responsibility of the Contractor to repair any reinforcement that is accidentally cut by saw cutting operations.
- The saw cut depth shall not exceed 1/2" or the concrete cover to the outer layer of reinforcement, whichever is less.
- Remove unsound concrete to expose sound, hard concrete substrate.
- Replace original concrete surface with fill-in material indicated on plans.
- Epoxy mortar repairs shall conform to the sections entitled "Patches," "General Provisions Applicable to All Patches," and "Vertical and Overhead Un-Formed Patches" of the special provisions.
- Portland cement concrete repairs shall conform to the sections entitled "Patches," "General Provisions Applicable to All Patches," and "Vertical and Overhead Formed Patches" of the special provisions.



SECTION A-A
1 1/2"=1'-0"



BARRIER RAIL REPAIR DETAIL
1 1/2"=1'-0"



END POST REPAIR DETAIL
1 1/2"=1'-0"

NOTE:
THE CONTRACTOR SHALL VERIFY ALL
CONTROLLING FIELD DIMENSIONS
BEFORE ORDERING OR FABRICATING
ANY MATERIAL.

NO AS BUILT CHANGES



MARK	DESCRIPTION	DATE	APPR.

PREPARED UNDER THE RESPONSIBLE CHARGE OF:

REGISTERED PROFESSIONAL ENGINEER
O. HENRIQUEZ
NO. CS9008
CIVIL
STATE OF CALIFORNIA

DATE: 12/10/10
O. HENRIQUEZ

DESIGNED BY: O. HENRIQUEZ
CHECKED BY: M. MARTIN
DRAWN BY: HV / RE
DRAWING CODE:
FILE NAME:
PLOT DATE: 12/10/10
SCALE: AS NOTED

ORANGE COUNTY
PUBLIC WORKS

PREPARED BY:
McLEAN & SCHULTZ
3040 Saturn Street, Ste 105
Brea, CA 92821

MAINTENANCE OF VARIOUS
BRIDGES IN ORANGE COUNTY

SANTIAGO CANYON AREA
BRIDGES - PHASE I

HIGHCLIFF DRIVE POC
OVER
NEWPORT BOULEVARD
BR. NO. 55C-0125

SHEET
REFERENCE
NUMBER

MISCELLANEOUS
DETAILS
Sheet 3 of 7
SHEET 2 OF 2