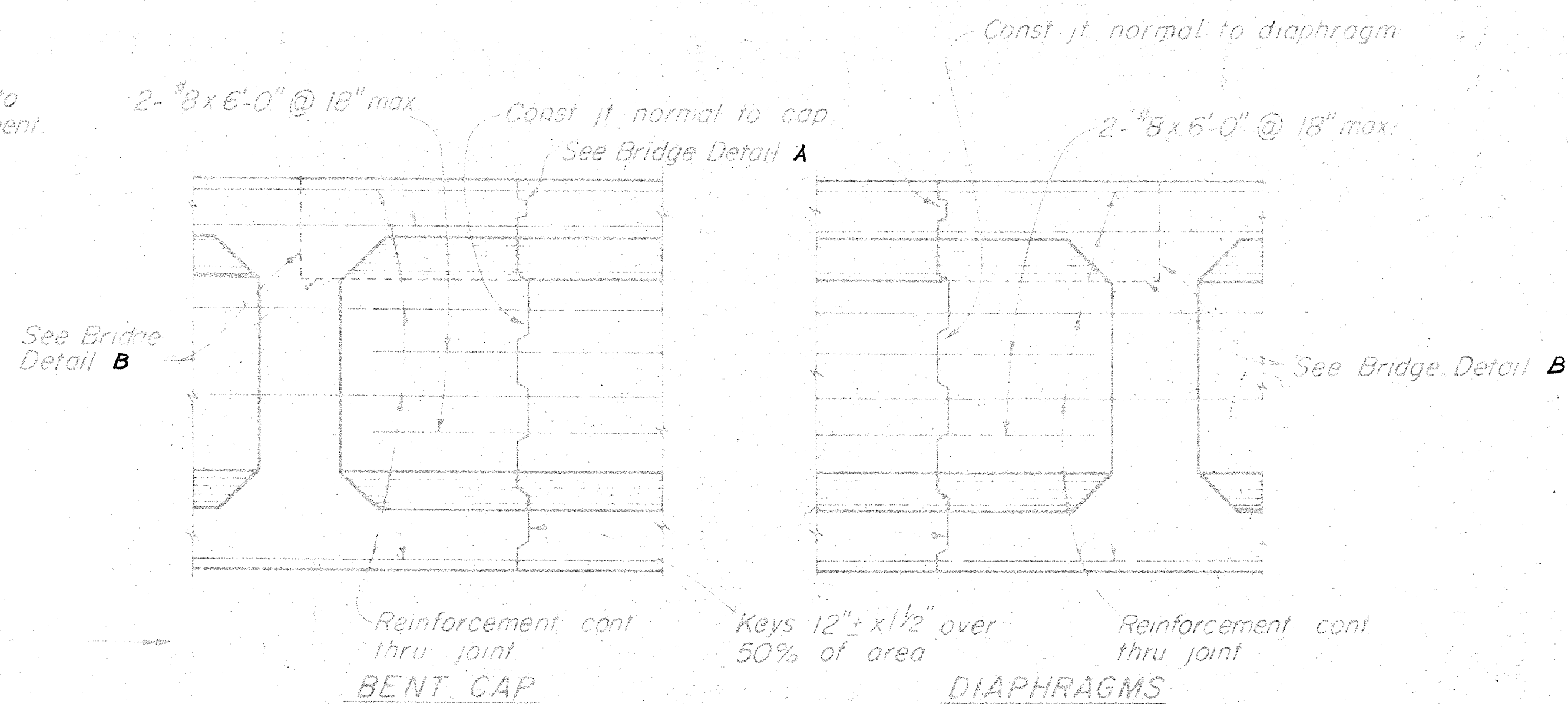
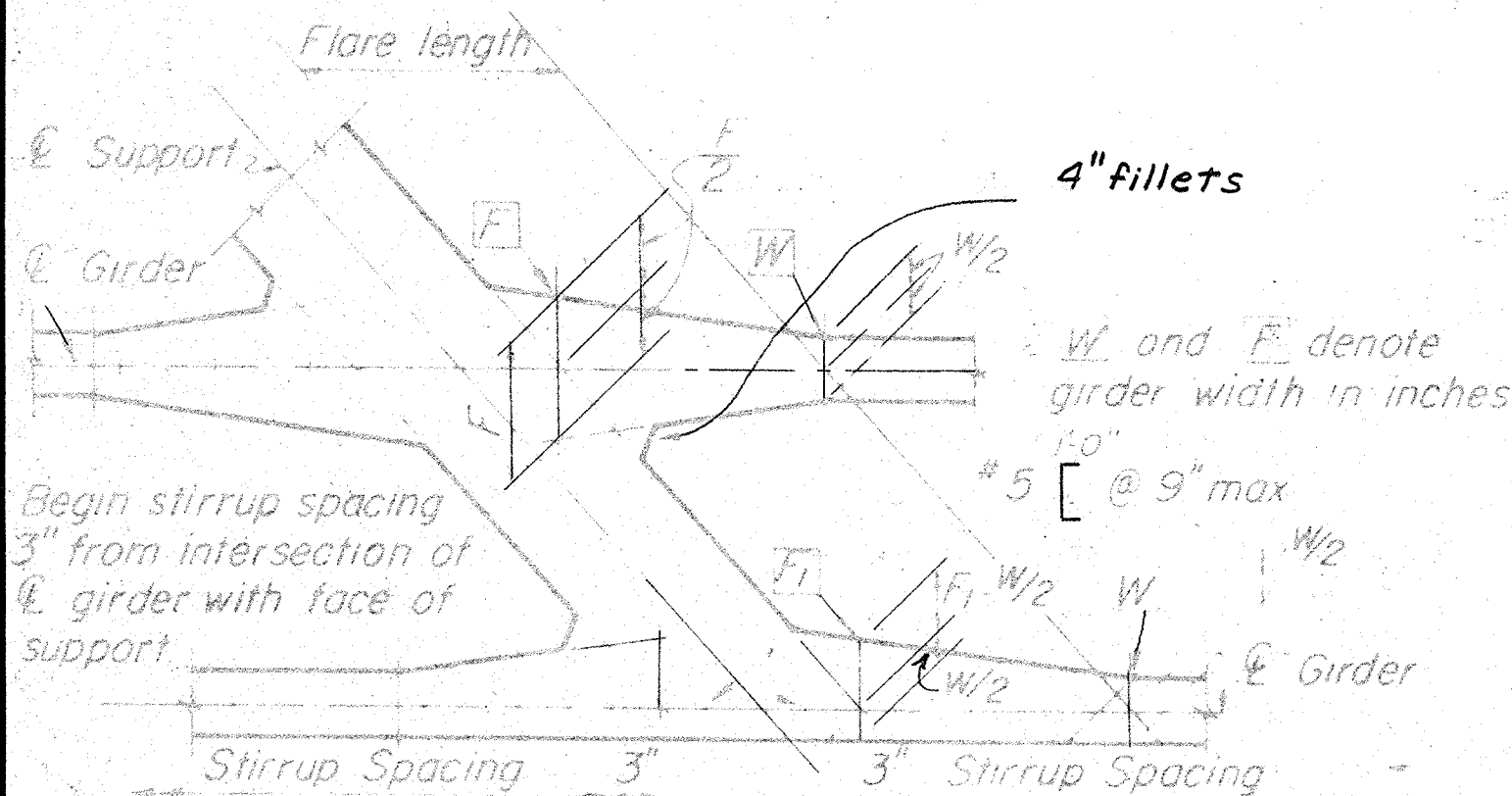
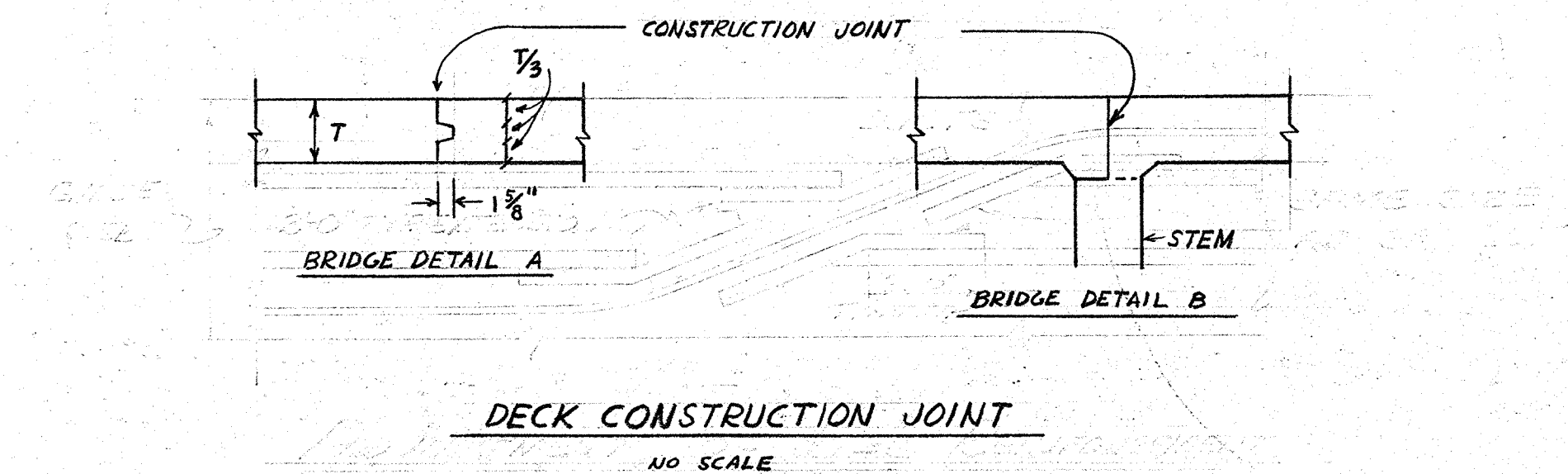


TRANSVERSE GIRDER CONSTRUCTION JOINTS
DETAIL J-3

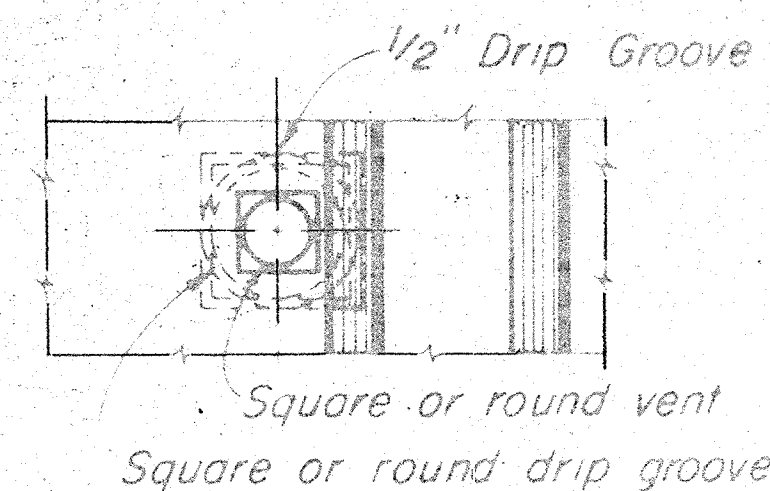
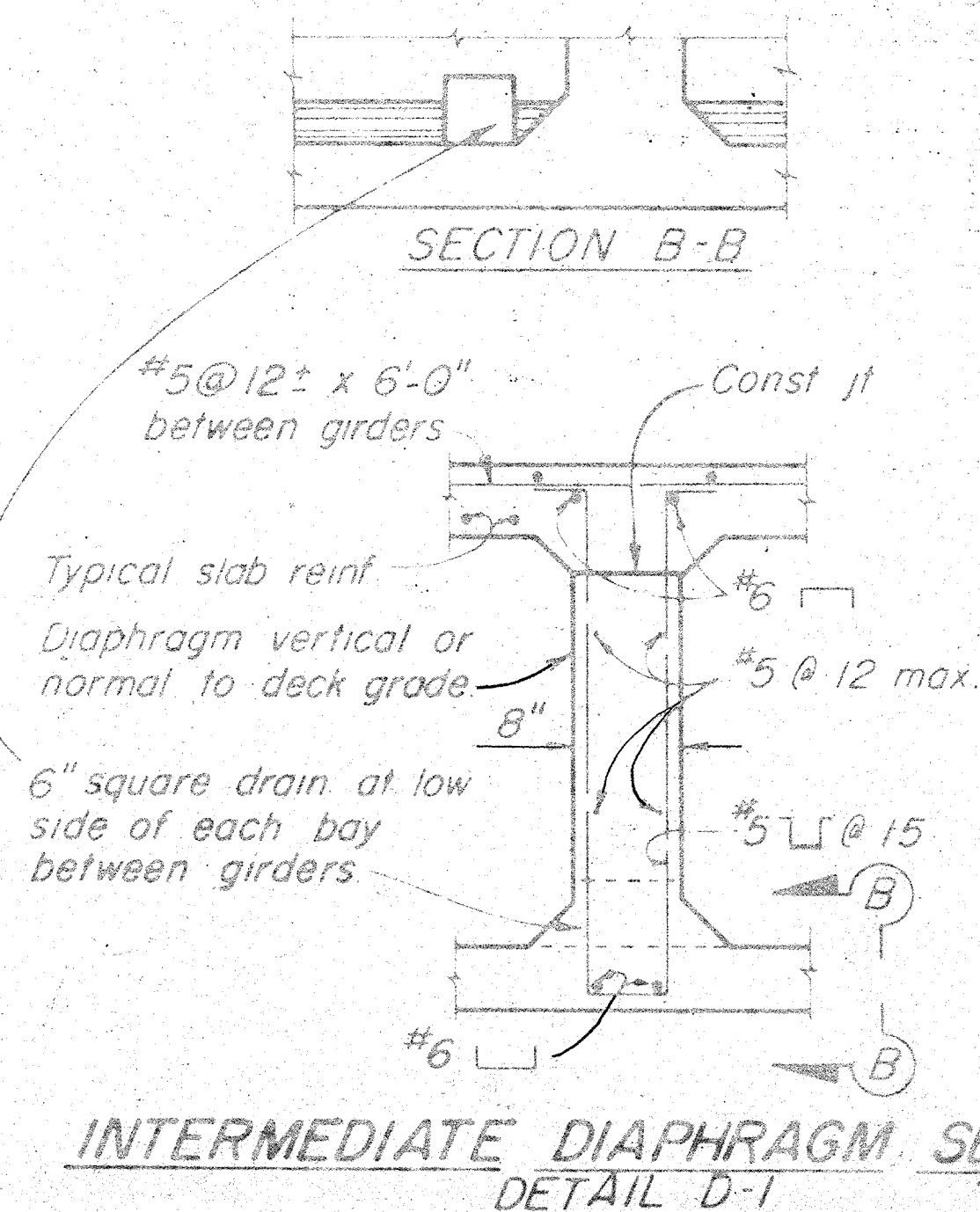
TRANSVERSE JOINTS WILL NOT BE PERMITTED IN SIMPLE SPANS UNLESS APPROVED BY THE ENGINEER.



LONGITUDINAL CONSTRUCTION JOINTS
DETAIL J-4

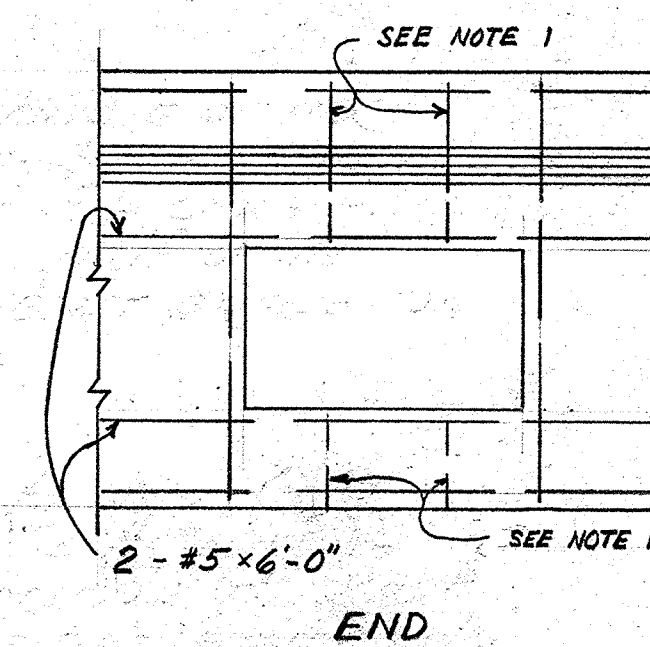


TYPICAL GIRDER FLARE AND STIRRUP SPACING DIAGRAM
DETAIL S-3



Note 5" φ vent in lower slab

Min of two vents per span in each bay between girders. One vent to be located at low point of span and other vent to be located at opposite end of span @ 1'-6" from face of Abutment or Bent.

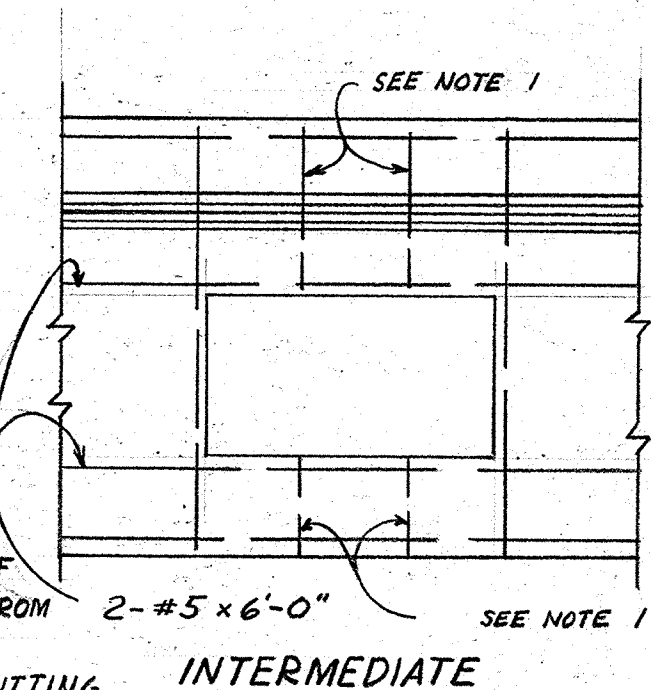


NOTES

① STIRRUPS ARE SAME SIZE AS ADJACENT STIRRUPS SHOWN BELOW & SHEET 26

② UTILITY OPENINGS IN WESTERLY BAY FOR PACIFIC TELEPHONE AND TELEGRAPH SHALL BE FORMED AND PLACED TO PERMIT LOWERING OF TELEPHONE CABLES FROM OVERHEAD LINES INTO OPENINGS WITHOUT CUTTING AND SPLICING PRIOR TO PLACING DECK STEEL AND CONCRETE.

DIAPHRAGMS
NO SCALE



AS BUILT

#11212
JERONIMO RD.
SHEET 29 of 33
RBD. 22.5:1
VELLUM

ORANGE COUNTY ROAD DEPARTMENT

JERONIMO ROAD
BRIDGE AL-10
OVER
ALISO CREEK

BOX GIRDER AND UTILITY OPENING DETAILS

AS NOTED

29 33

DR. 10 (11212)