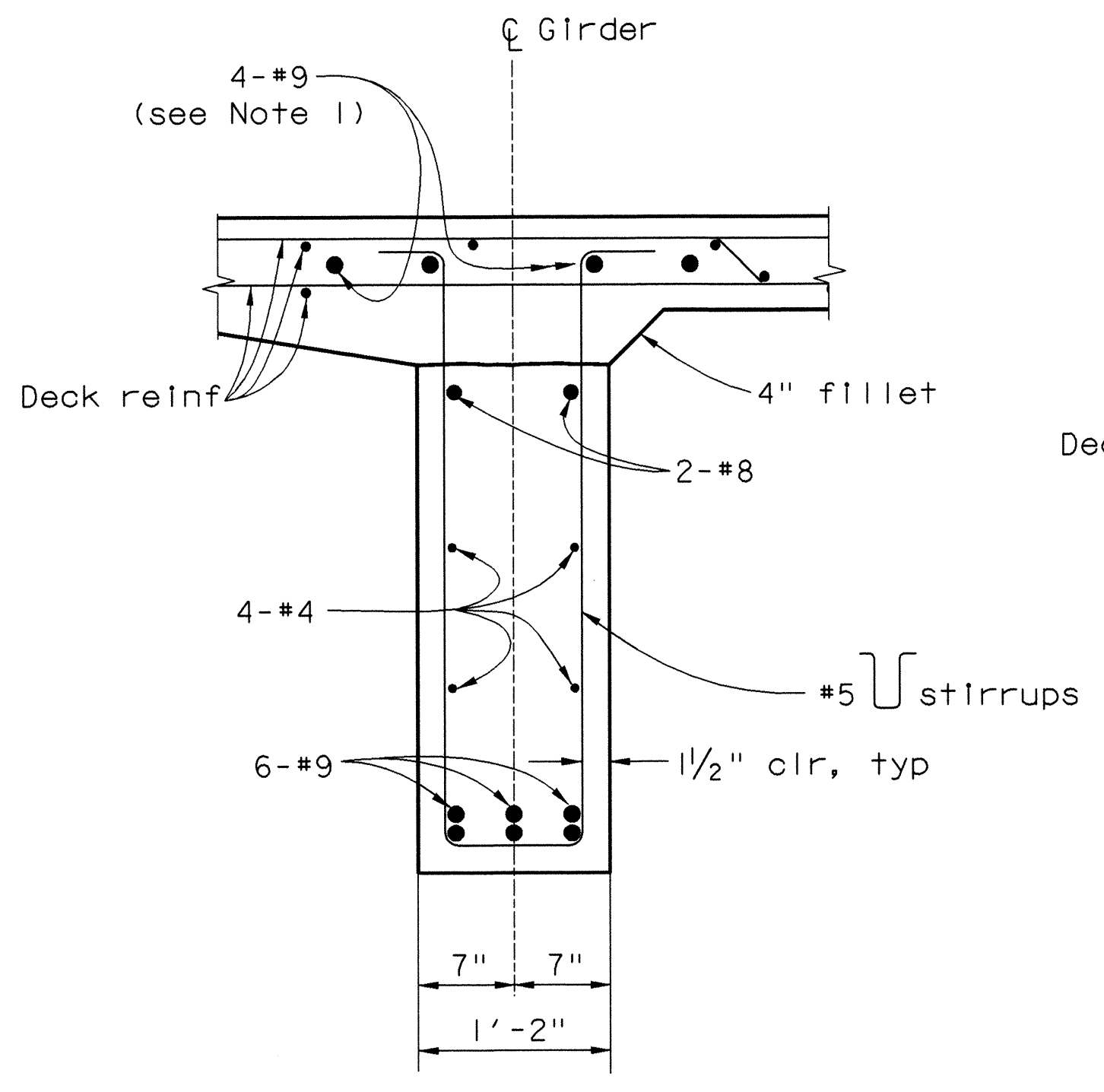
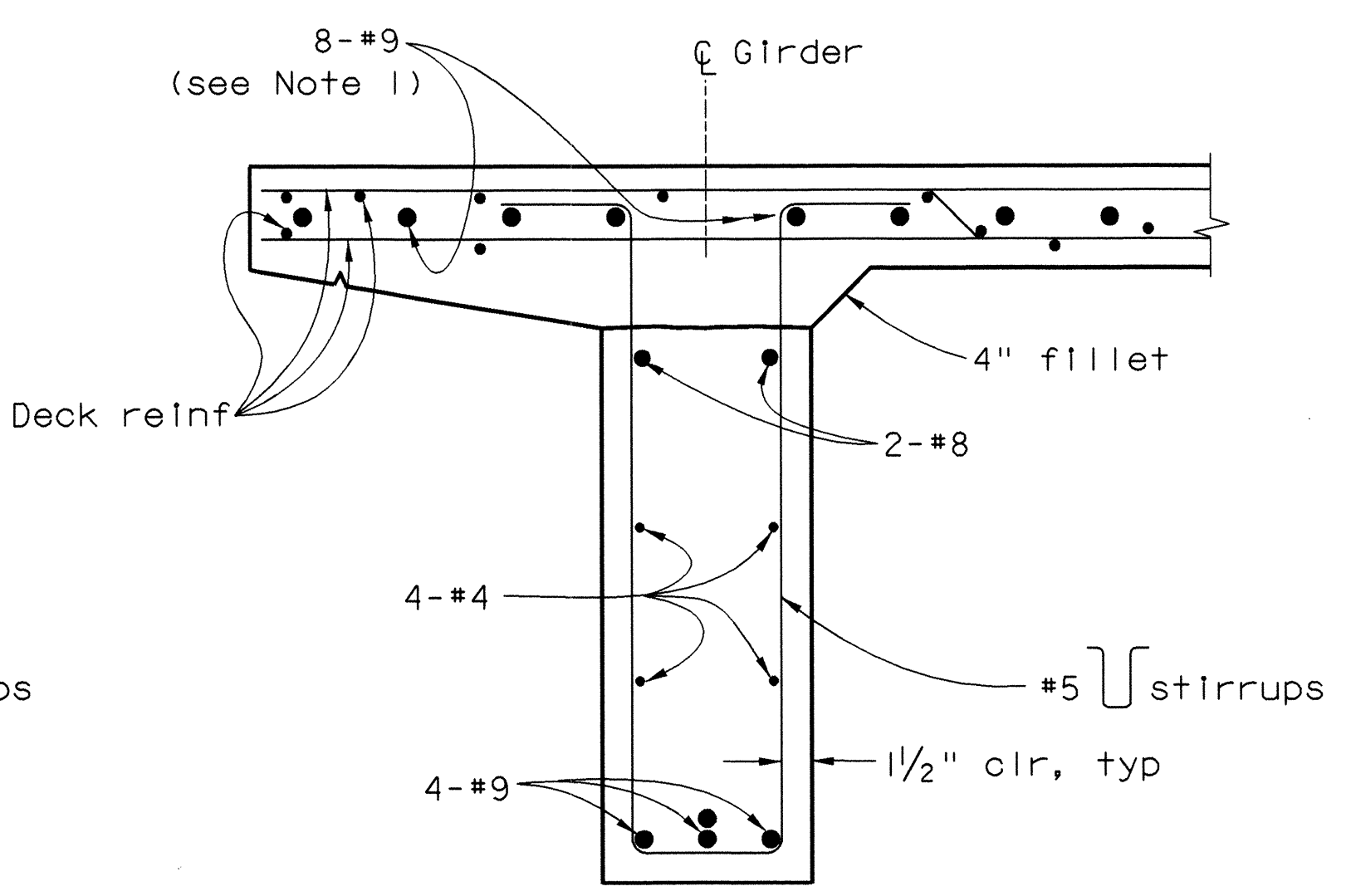


TYPICAL GIRDER REINFORCEMENT

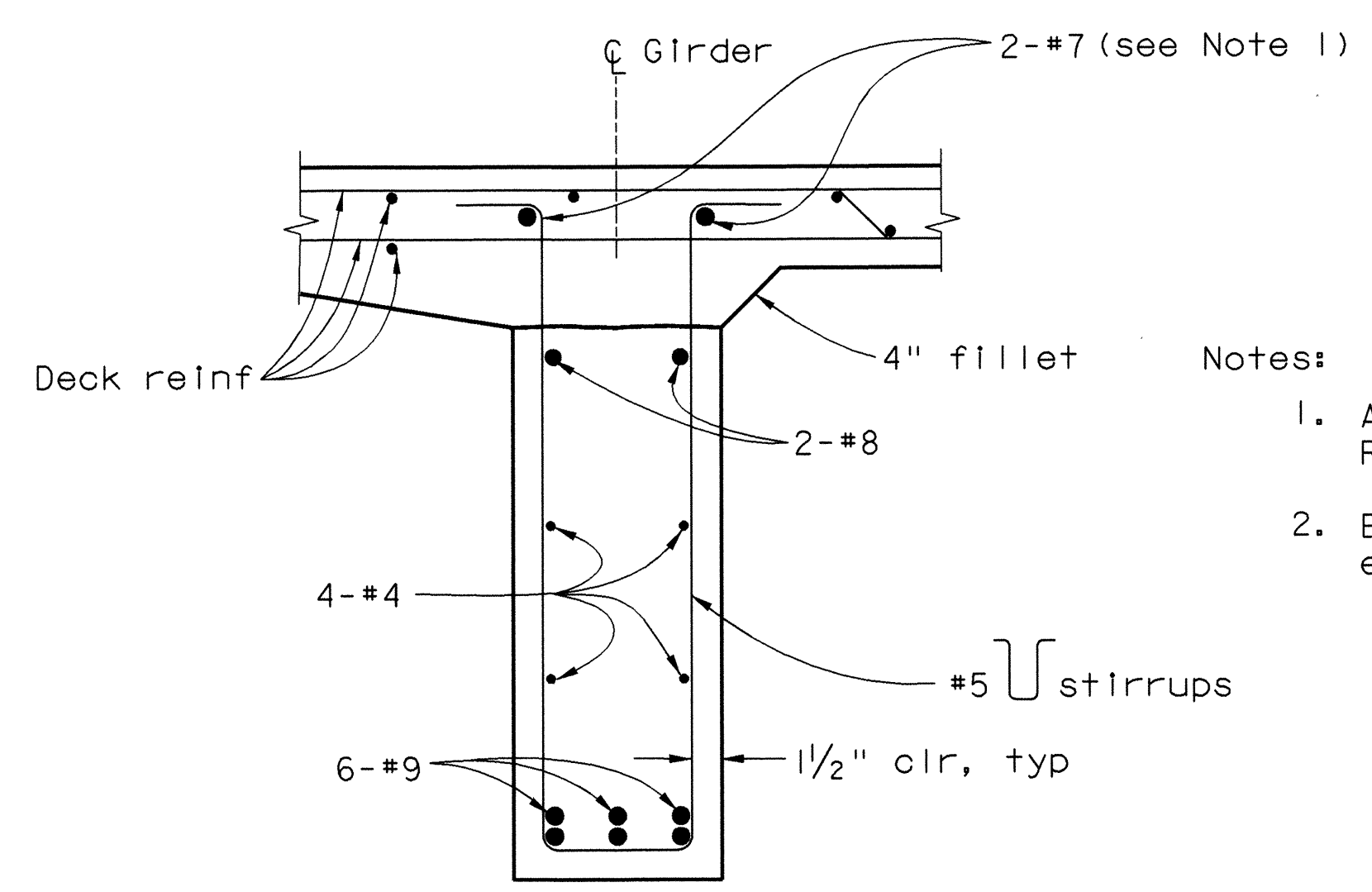
$\frac{3}{8}" = 1'-0"$



SECTION A-A
 $\frac{1}{2}" = 1'-0"$
(see Note 2)



SECTION B-B
 $\frac{1}{2}" = 1'-0"$
(see Note 2)



SECTION C-C
 $\frac{1}{2}" = 1'-0"$
(see Note 2)

- Notes:
1. Additional deck rebars, See "Longitudinal Deck Reinforcement" sheet and "Typical Section" sheet
 2. Exterior girder shown, Intermediate Girder similar except all the #9 bars in closure pour are continuous.

Note: Contractor shall verify all controlling field dimensions before ordering or fabricating any material

W. Koo & Associates, Inc.
600 The City Parkway West, Suite 310
Orange, CA 92668
PH: (714) 456-0280
FAX: (714) 456-0295

ORANGE COUNTY RESOURCES AND DEVELOPMENT MANAGEMENT DEPARTMENT		GLASSELL STREET BRIDGE WIDENING OVER SANTA ANA RIVER	
GIRDER DETAILS NO. 1			
DESIGNED: X. VU	CHECKED: S. SHARIFAN	SHEET 55R	
DRAWN: S. BUELOW	CHECKED: S. SHARIFAN	OF 70	
SCALE: AS SHOWN	DATE: 7/19/02	DRAWING NO.	

PREPARED UNDER RESPONSIBLE CHARGE OF:

SHAEL M. SHARIFAN
No. CE 45691
Exp. 3-30-06
STATE OF CALIFORNIA

7/19/02