

STANDARD PLANS DATED JULY 1999

A10A	ABBREVIATIONS
A10B	SYMBOLS
A20A	PAVEMENT MARKERS AND TRAFFIC LINES
A62A	TYPICAL DETAILS
A62B	EXCAVATION AND BACKFILL MISCELLANEOUS DETAILS
A62C	LIMITS OF PAYMENT FOR EXCAVATION AND BACKFILL
A87	BRIDGE SURCHARGE AND WALL
D73	LIMITS OF PAYMENT FOR EXCAVATION
D77B	AND BACKFILL BRIDGE
B0-1	CURBS, DIKES AND DRIVEWAYS
B0-3	DRAINAGE INLETS
B0-5	BICYCLE PROOF GRATE DETAILS
B0-13	BRIDGE DETAILS
B3-1	BRIDGE DETAILS
B3-8	BRIDGE DETAILS
B3-9	BRIDGE DETAILS
B6-21	RETAINING WALL TYPE 1 - H = 4' - 30'
B7-1	RETAINING WALL DETAILS NO. 1
B7-5	RETAINING WALL DETAILS NO. 2
B11-47	JOINT SEALS (MAXIMUM MOVEMENT RATING = 2")
B11-51	BOX GIRDER DETAILS
B11-54	DECK DRAINS
ES-7A	CABLE RAILING
ES-7B	TUBULAR HAND RAILING
ES-7C	CONCRETE BARRIER TYPE 26
	SIGNAL, LIGHTING AND ELECTRICAL SYSTEMS
	ELECTRICAL DETAILS STRUCTURE INSTALLATIONS
	SIGNAL, LIGHTING AND ELECTRICAL SYSTEMS
	ELECTRICAL DETAILS STRUCTURE INSTALLATIONS
	SIGNAL, LIGHTING AND ELECTRICAL SYSTEMS
	ELECTRICAL DETAILS STRUCTURE INSTALLATIONS

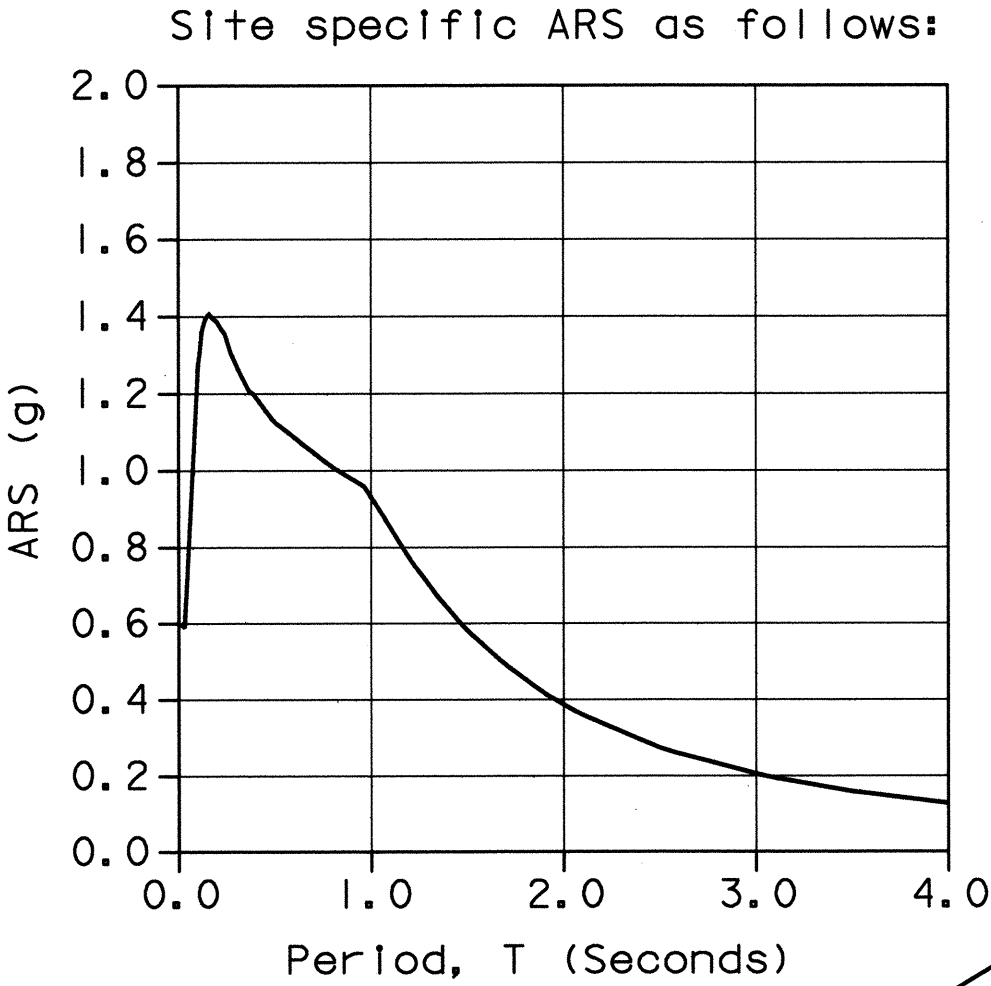
GENERAL NOTES  
LOAD FACTOR DESIGN

DESIGN: BRIDGE DESIGN SPECIFICATIONS  
(1999 AASHTO with Interims and Revisions by CALTRANS)

DEAD LOAD: Includes 35 psf for future wearing surface.

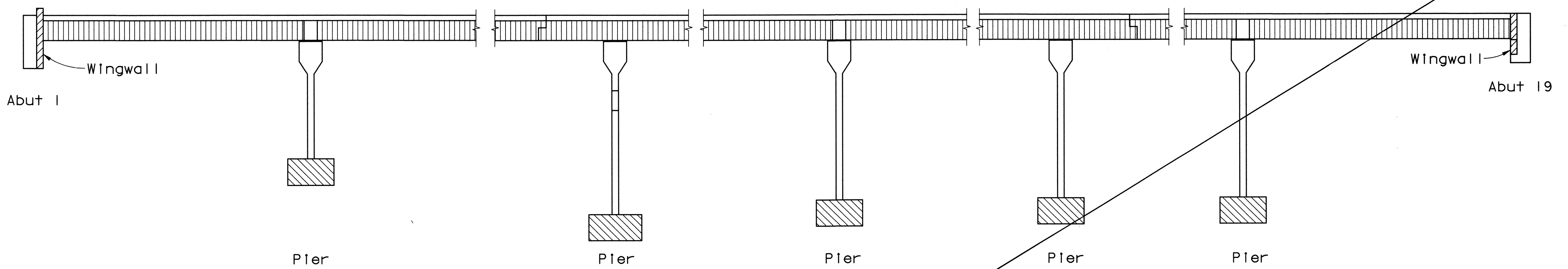
LIVE LOADING: HS20-44 alternative and permit load

SEISMIC LOADING: Peak Bed Rock Acceleration = 0.6g  
ARS curve for an earthquake magnitude of 6.5 to 7.5. Soil profile Type D.



REINFORCED CONCRETE:  $f_y = 60,000$  psi  
 $f'_c = 4,000$  psi  
 $n = 8$   
Transverse Deck Slabs (Working Stress Design)  
 $f_s = 20,000$  psi  
 $f_c = 1,200$  psi  
 $n = 10$

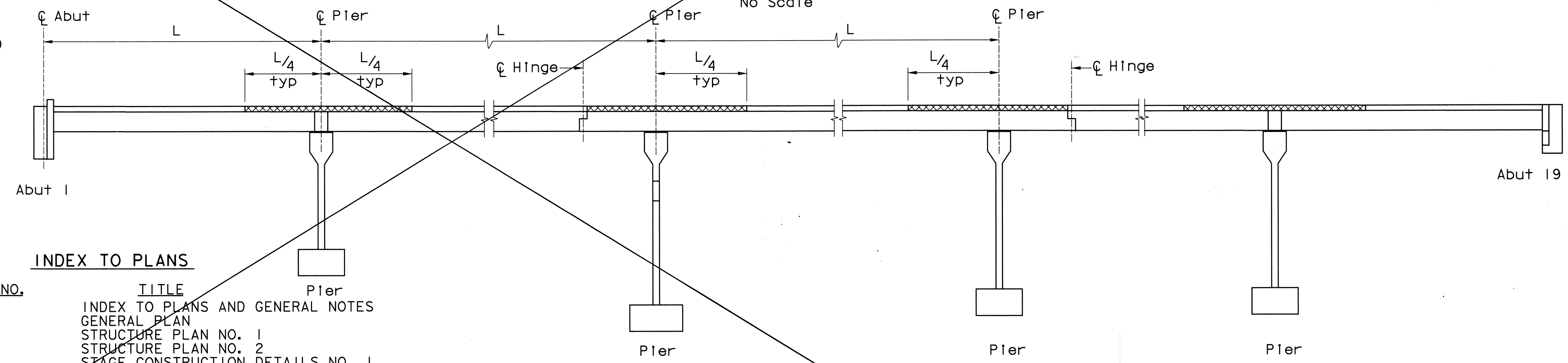
PRESTRESSED CONCRETE: See "Girder Details No. 1" sheet.



**LEGEND**

- Precast Prestressed Concrete Girder (f'c per prestressing notes on "Girder Details No. 1" sheet)
- Structural Concrete, Bridge (3,250 psi @ 28 days)
- Structural Concrete, Bridge (4,000 psi @ 28 days)
- Structural Concrete, Bridge Footing (3,250 psi @ 28 days)

CONCRETE STRENGTH AND TYPE LIMITS



INDEX TO PLANS

SHEET NO.	TITLE
33	INDEX TO PLANS AND GENERAL NOTES
34	GENERAL PLAN
35	STRUCTURE PLAN NO. 1
36	STRUCTURE PLAN NO. 2
37	STAGE CONSTRUCTION DETAILS NO. 1
38	STAGE CONSTRUCTION DETAILS NO. 2
39	STAGE CONSTRUCTION DETAILS NO. 3
40	FOUNDATION PLAN NO. 1
41	FOUNDATION PLAN NO. 2
42	ABUTMENT 1 LAYOUT
43	ABUTMENT 19 LAYOUT
44	ABUTMENT DETAILS NO. 1
45	ABUTMENT DETAILS NO. 2
46	PIER DETAILS NO. 1
47	PIER DETAILS NO. 2
48	PIER DETAILS NO. 3
49	PIER DETAILS NO. 4
50	PIER DETAILS NO. 5
51	PIER RETROFIT DETAILS
52	TYPICAL SECTION
53	GIRDER LAYOUT NO. 1
54	GIRDER LAYOUT NO. 2
55	GIRDER DETAILS NO. 1
56	GIRDER DETAILS NO. 2
57	GIRDER DETAILS NO. 3
58	GIRDER DETAILS NO. 4
59	LONGITUDINAL DECK REINFORCEMENT
60	HINGE DETAILS NO. 1
61	HINGE DETAILS NO. 2
62	HINGE DETAILS NO. 3
63	MISCELLANEOUS DETAILS NO. 1
64	MISCELLANEOUS DETAILS NO. 2
65	ROCK SLOPE PROTECTION DETAILS
66	LOG OF TEST BORINGS NO. 1
67	LOG OF TEST BORINGS NO. 2
68	LOG OF TEST BORINGS NO. 3
69	LOG OF TEST BORINGS NO. 4
70	LOG OF TEST BORINGS NO. 5

DECK CONCRETE PLACEMENT SEQUENCE

**LEGEND**

- Phase II
- Phase I

SUPERSEDED AND REPLACED BY SHEET 33R.

W. Koo & Associates, Inc.  
600 The City Parkway West, Suite 310  
Orange, CA 92668  
PH: (714) 456-0280  
FAX: (714) 456-0295

ORANGE COUNTY  
PUBLIC FACILITIES AND RESOURCES DEPARTMENT

GLASSSELL STREET BRIDGE WIDENING  
OVER SANTA ANA RIVER

INDEX TO PLANS  
AND GENERAL NOTES

MARK	DATE	DESCRIPTION
REVISIONS		
PREPARED UNDER RESPONSIBLE CHARGE OF:		
DESIGNED: X. YU		
DRAWN: G. BUELOW		
CHECKED: S. SHARIFAN		
DATE: 7/19/02		
SCALE: AS SHOWN		
DRAWING NO.		

33  
OF 70