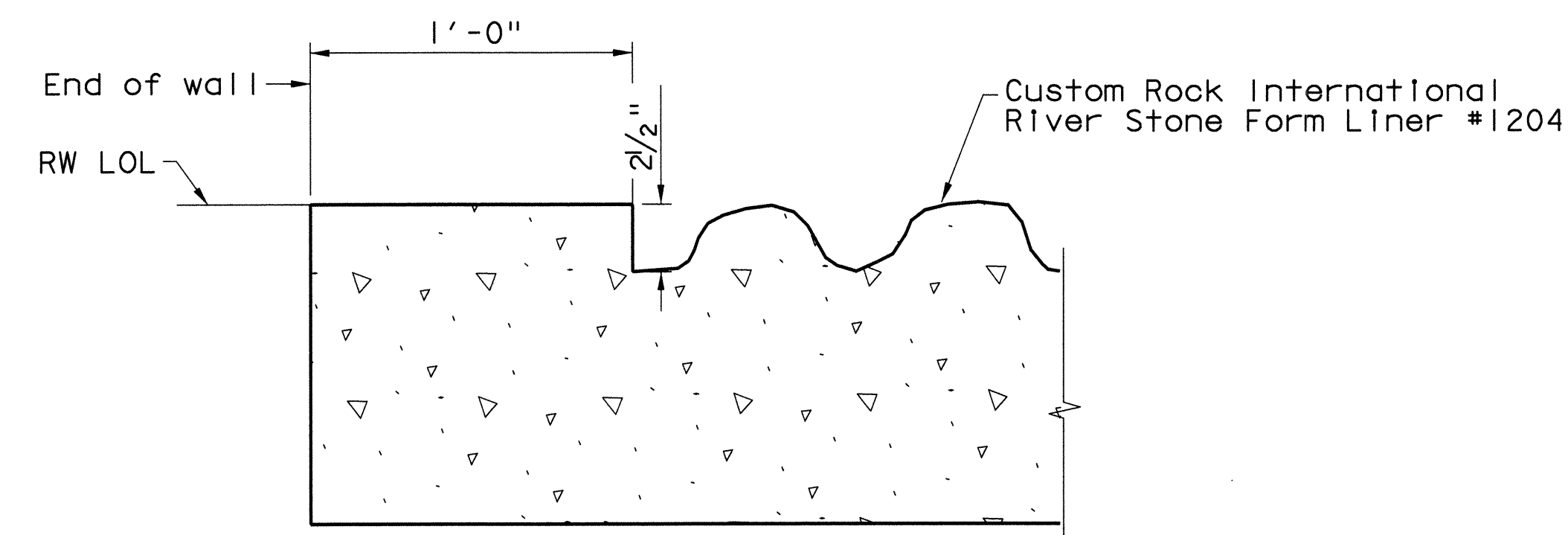
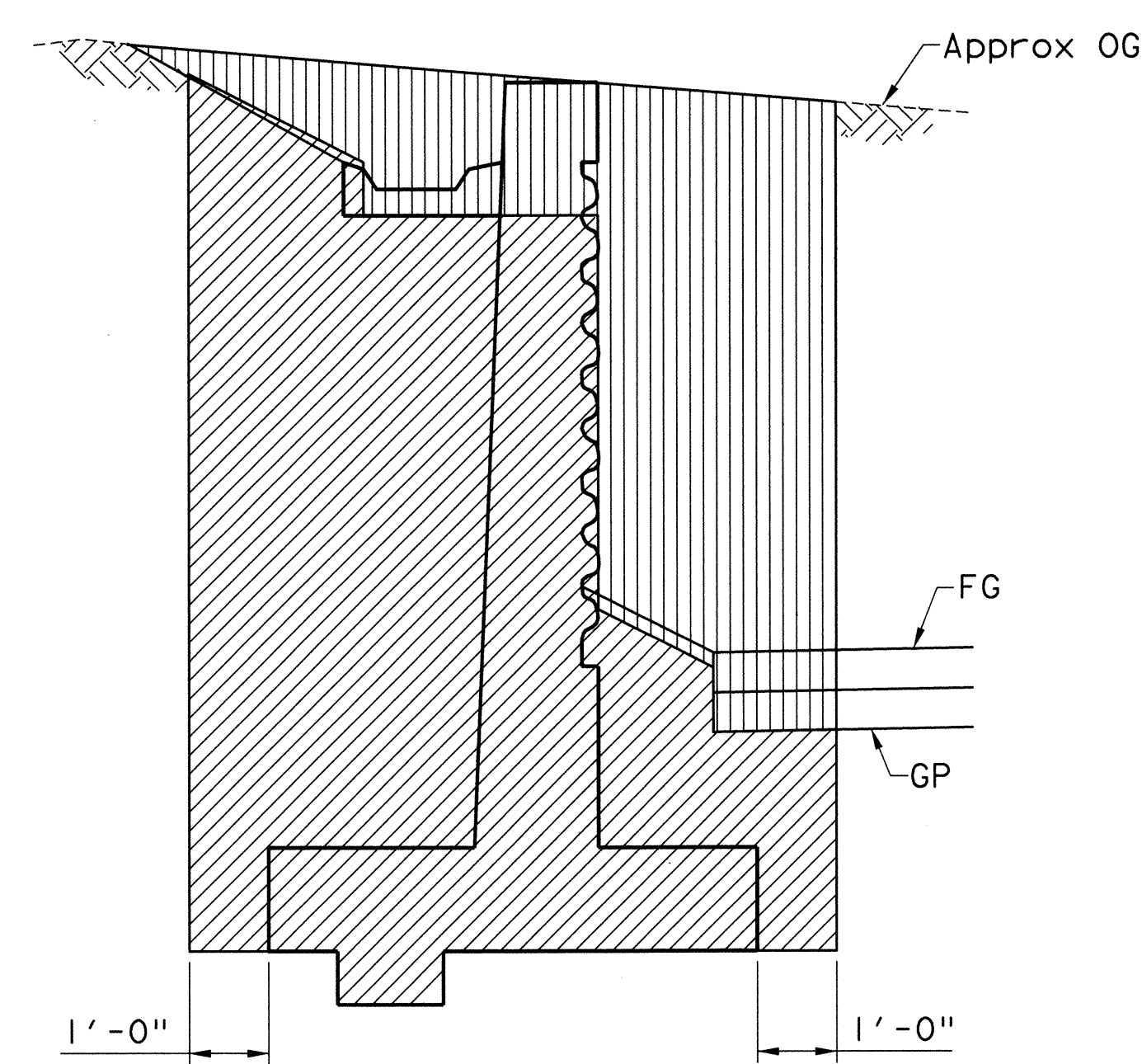


RETAINING WALL TYPE I (MOD) TYPICAL SECTION (B3-1)
No Scale

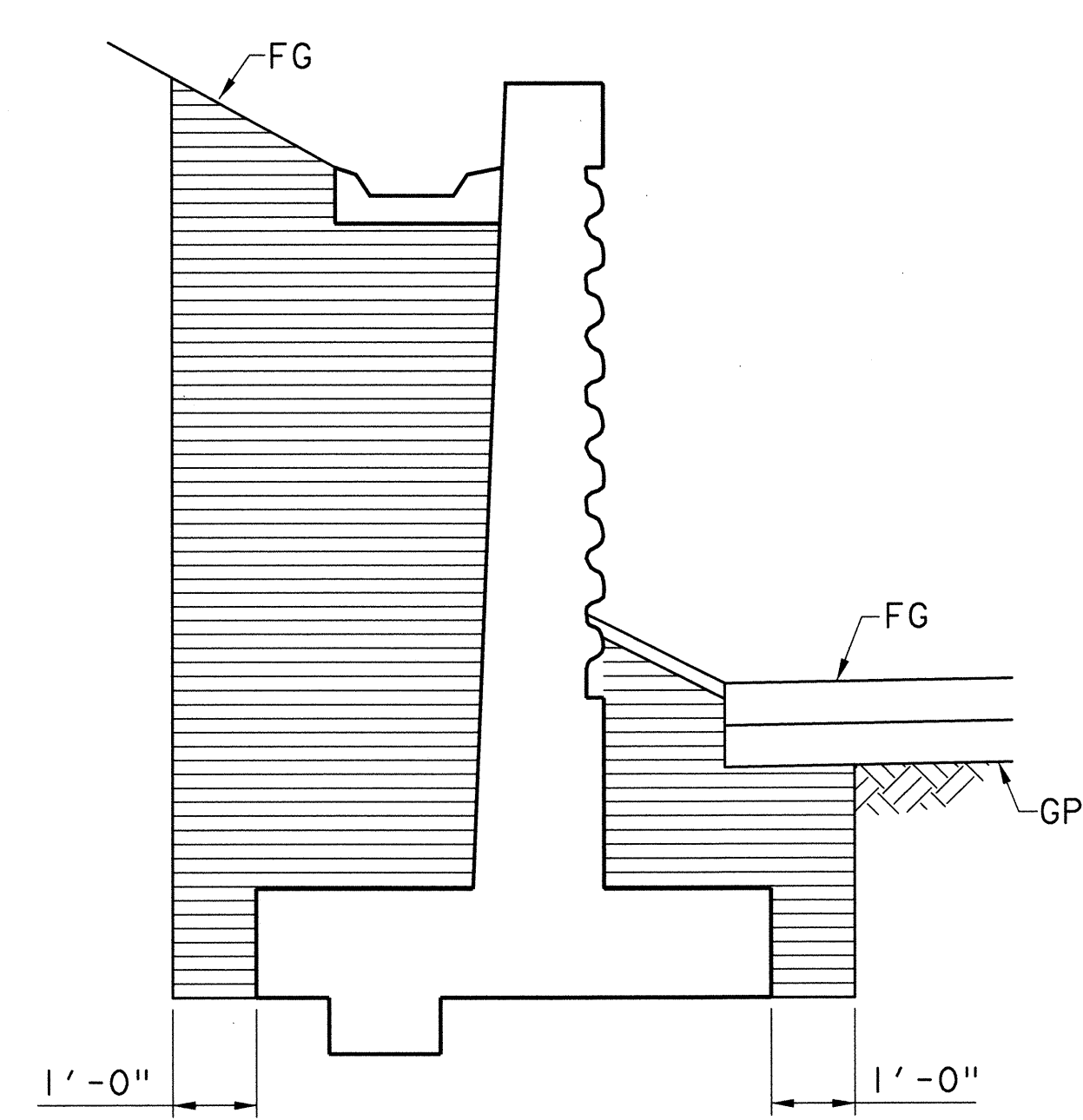


RIVER STONE FORM LINER DETAILS
No Scale

Note: Contractor shall verify all controlling field dimensions before ordering or fabricating any material



EXCAVATION

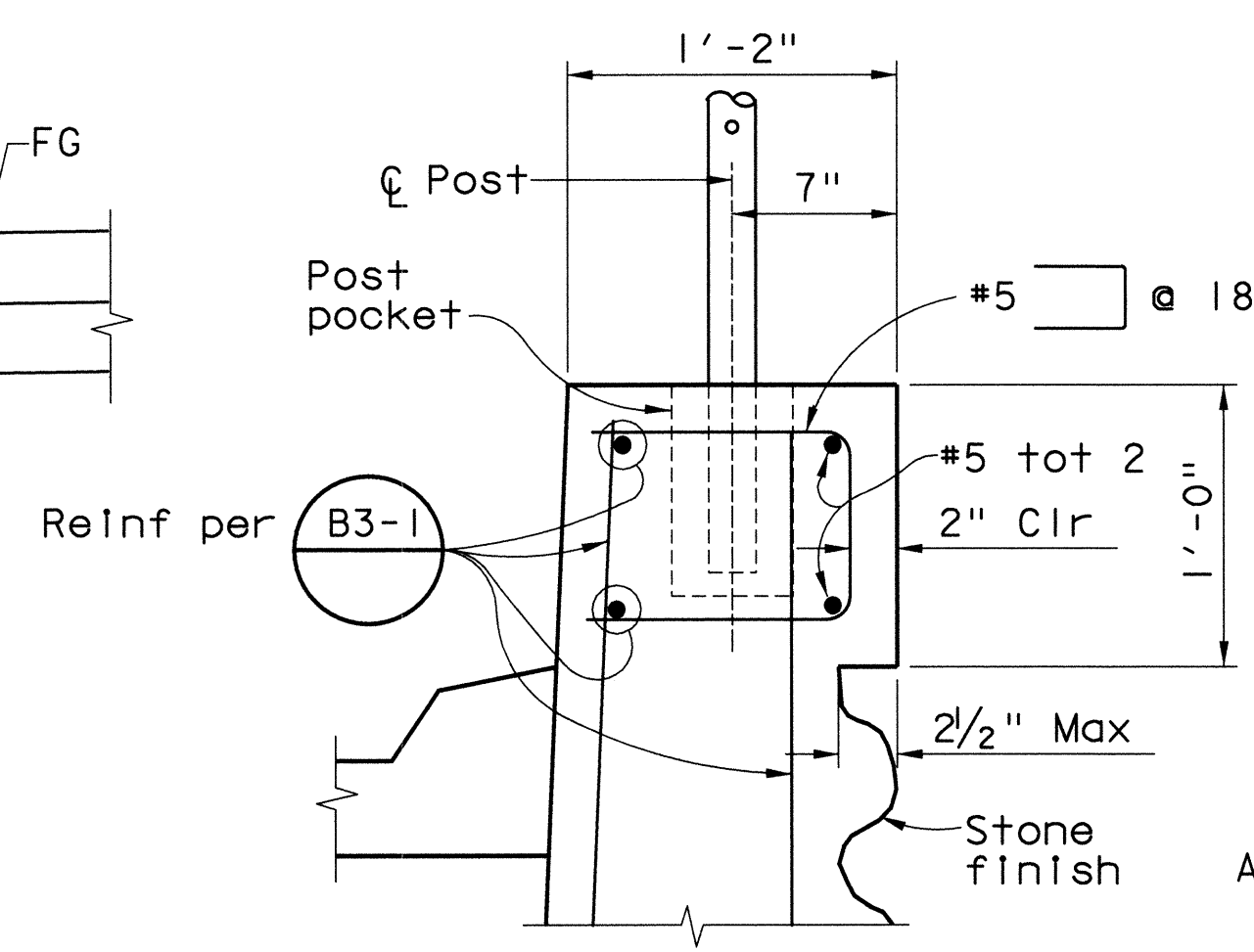


BACKFILL

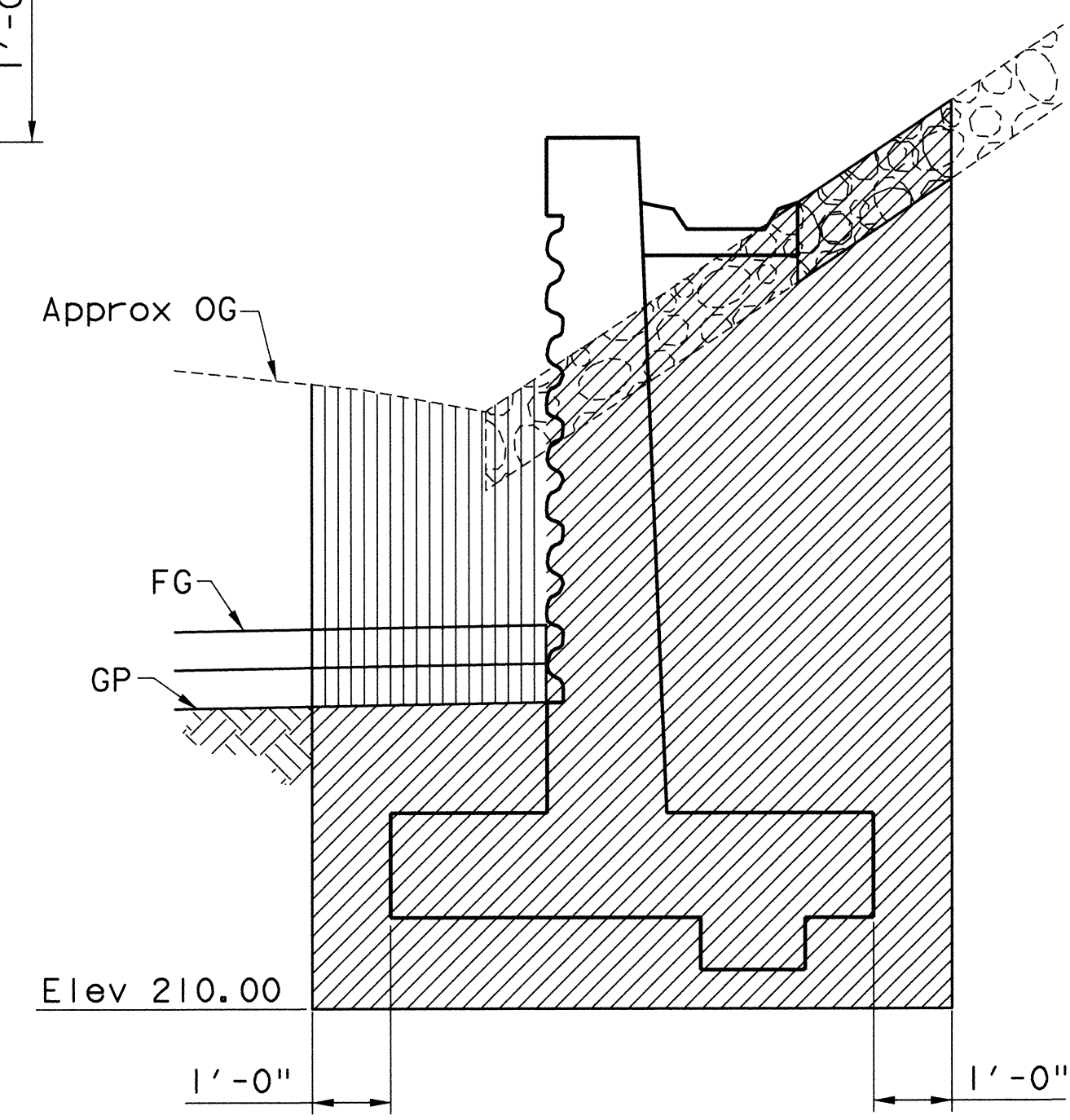
LIMITS OF PAYMENT FOR EXCAVATION AND BACKFILL
RETAINING WALLS NO. 1 & 2

No Scale

Note: Limits of payment shown for Retaining Wall No. 1, Retaining Wall No. 2 & 3, similar.

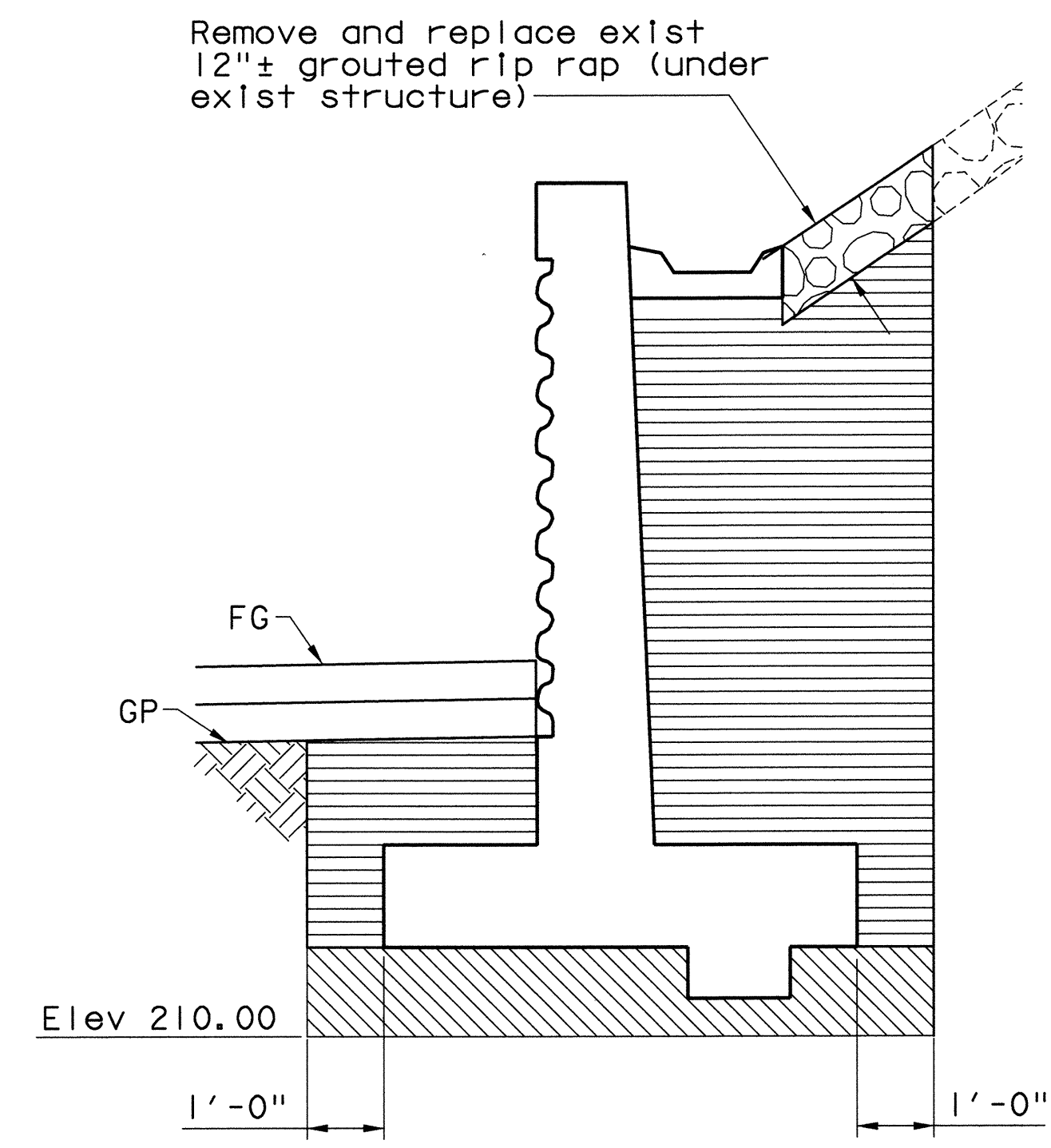


DETAIL I
No Scale



LIMITS OF PAYMENT FOR EXCAVATION AND BACKFILL
RETAINING WALL NO. 3

No Scale



- Structure Excavation
- Structure Backfill (90% compaction)
- Structure Backfill (95% compaction)
- Bikeway Excavation
- Riprap

Remove and replace exist 12"± grouted rip rap (under exist structure)

W. Koo & Associates, Inc.
600 The City Parkway West, Suite 310
Orange, CA 92668
PH: (714) 456-0280
FAX: (714) 456-0295

ORANGE COUNTY PUBLIC FACILITIES AND RESOURCES DEPARTMENT	
GLASSELL STREET BRIDGE WIDENING OVER SANTA ANA RIVER	
RETAINING WALL DETAILS	
MARK	DATE
REVISIONS	
PREPARED UNDER RESPONSIBLE CHARGE OF:	
DESIGNED	DATE
DRAWN	DATE
CHECKED	DATE
SCALE	DRAWING NO.
AS SHOWN	7/19/02
SHEET 17 OF 70	