

BENCHMARK

ELEVATIONS ARE BASED ON D.C.S. BENCHMARKS:
 3B-105-91 ELEV = 60.281'
 3B-97-85 ELEV = 54.526'

NGVD 1929 (1976 D.C.S. ADJUSTMENT)

CURVE DATA

① R = 1799.96'
 D = 26°57'01"
 L = 846.65'
 T = 431.31'

PLAN

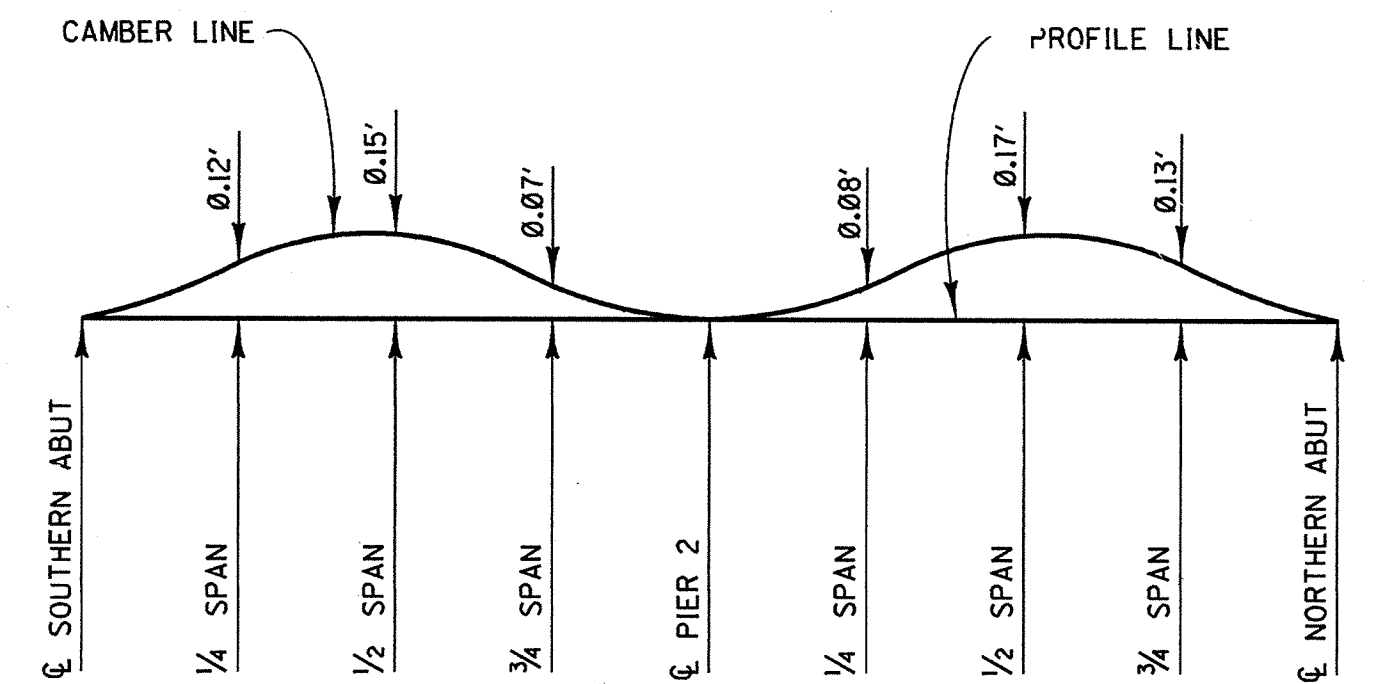
1" = 20'

NOTES:

00.00 DENOTES BOTTOM OF FOOTING ELEVATION

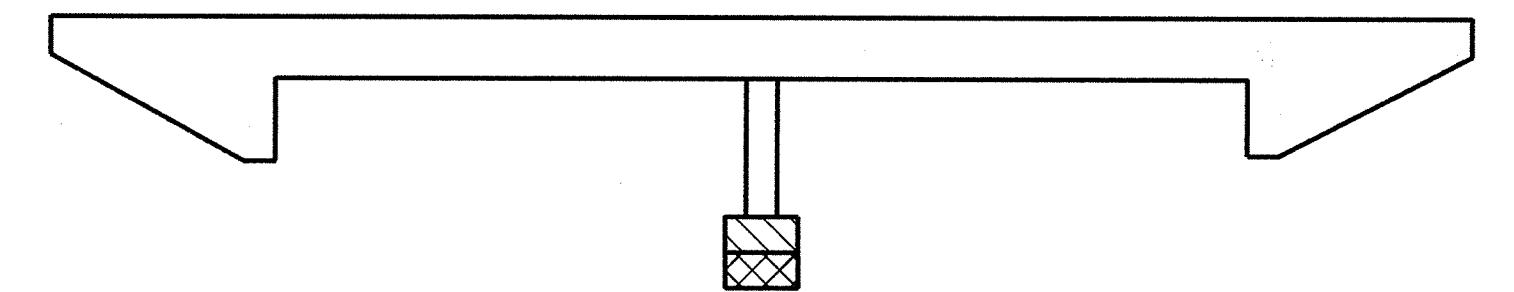
ALL PILES NOT SHOWN

----- DENOTES EXISTING STRUCTURE



CAMBER DIAGRAM

NOTE:
 DOES NOT INCLUDE ALLOWANCE FOR FALSEWORK SETTLEMENT



CONCRETE STRENGTH AND TYPE LIMITS

NO SCALE

- STRUCTURAL CONCRETE, BRIDGE
- STRUCTURAL CONCRETE, BRIDGE FOOTING
- SEAL COURSE CONCRETE

GENERAL NOTES LOAD FACTOR DESIGN

DESIGN: BRIDGE DESIGN SPECIFICATIONS
 (1992 AASHTO WITH INTERIMS AND REVISIONS BY CALTRANS)

DEAD LOAD: INCLUDES 35 psf FOR FUTURE WEARING SURFACE.

LIVE LOADING: HS20-44 AND ALTERNATIVE AND PERMIT DESIGN LOAD.

REINFORCED CONCRETE: $f_y = 60,000$ PSI
 $f'_c = 3,250$ PSI
 $n = 9$
 TRANSVERSE DECK SLABS (WORKING STRESS DESIGN)
 $f_s = 20,000$ PSI
 $f_c = 1,200$ PSI
 $n = 10$

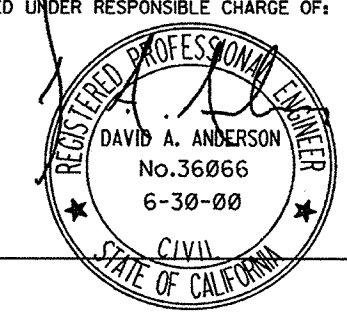
SEISMIC LOADING: - PEAK ROCK ACCELERATION 0.31 G
 - DEPTH OF ALLUVIUM = 80 TO 150 FT.

NOTE:

SEAL COURSE TO BE PLACED ONLY WHEN ORDERED BY THE ENGINEER. ESTIMATED QUANTITIES INVOLVED ARE BASED ON THE SEAL THICKNESS SHOWN. THE THICKNESS TO BE USED WILL BE DETERMINED IN THE FIELD BY THE ENGINEER. WHEN SEAL IS NOT USED, THE BOTTOM OF THE REINFORCED FOOTING SHALL REMAIN AT THE ELEVATION SHOWN.

ORANGE COUNTY ENVIRONMENTAL MANAGEMENT AGENCY	
BRIDGE PLANS FOR PETERS CANYON CHANNEL OVERCROSSING (F06) WIDEN	
FOUNDATION PLAN	
DESIGNED YOLANDA LABIA	SHEET 121
DRAWN G. BROWN	CHECKED CHING-FENG CHEN
SCALE AS SHOWN	DATE 6-97
DRAWING NO. F06-301-1	OF 130

URS GREINER, INC.
 1241 EAST DYER ROAD, SUITE 250
 SANTA ANA, CALIFORNIA 92705-5605



DR 1 06 157