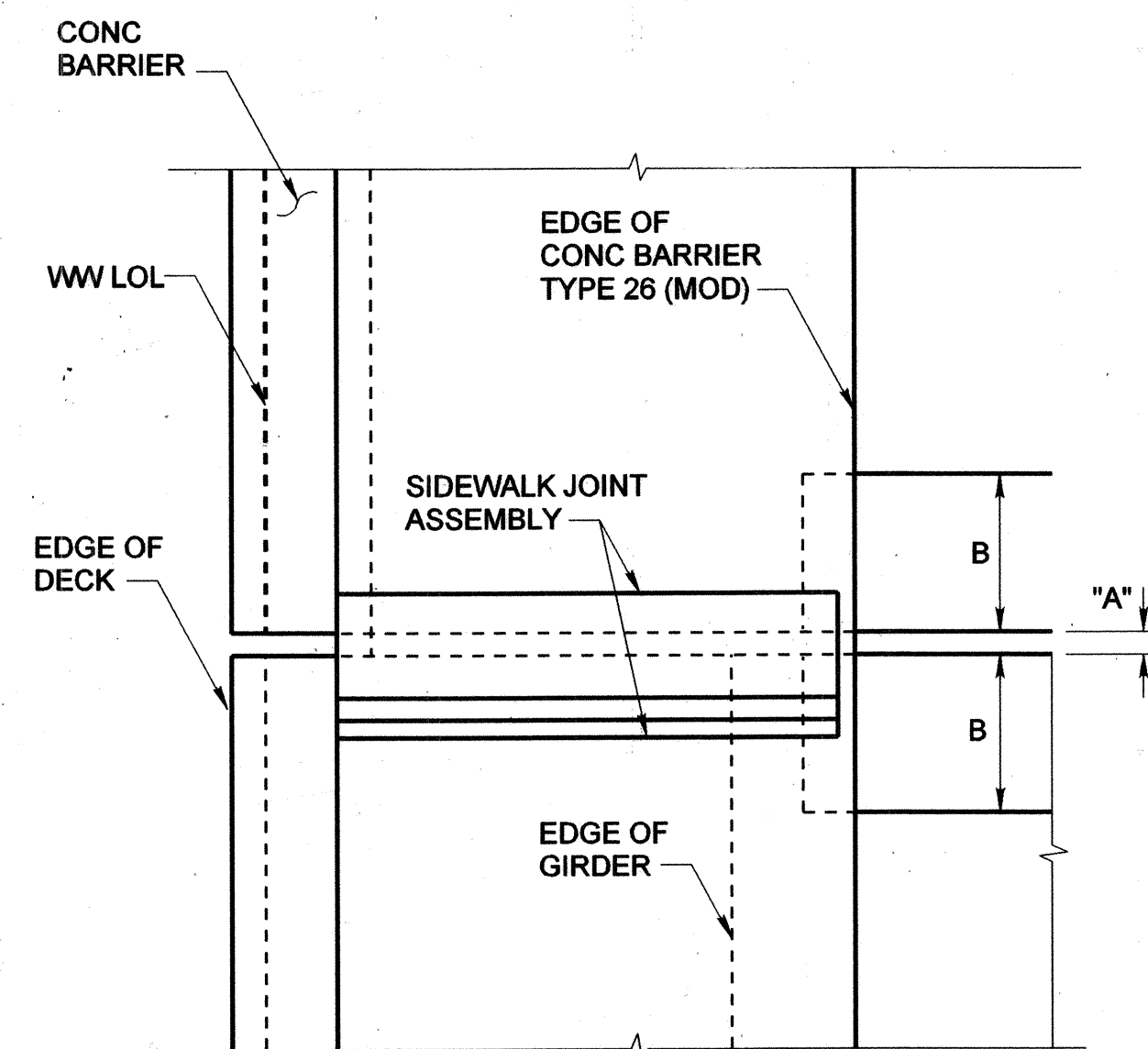


SEAL INSTALLATION (@ WIDENED NORTH BARRIER)

1:40

NOTE: NOT ALL REINFORCING SHOWN FOR CLARITY.
UTILITY DUCTS IN BARRIER NOT SHOWN FOR CLARITY.

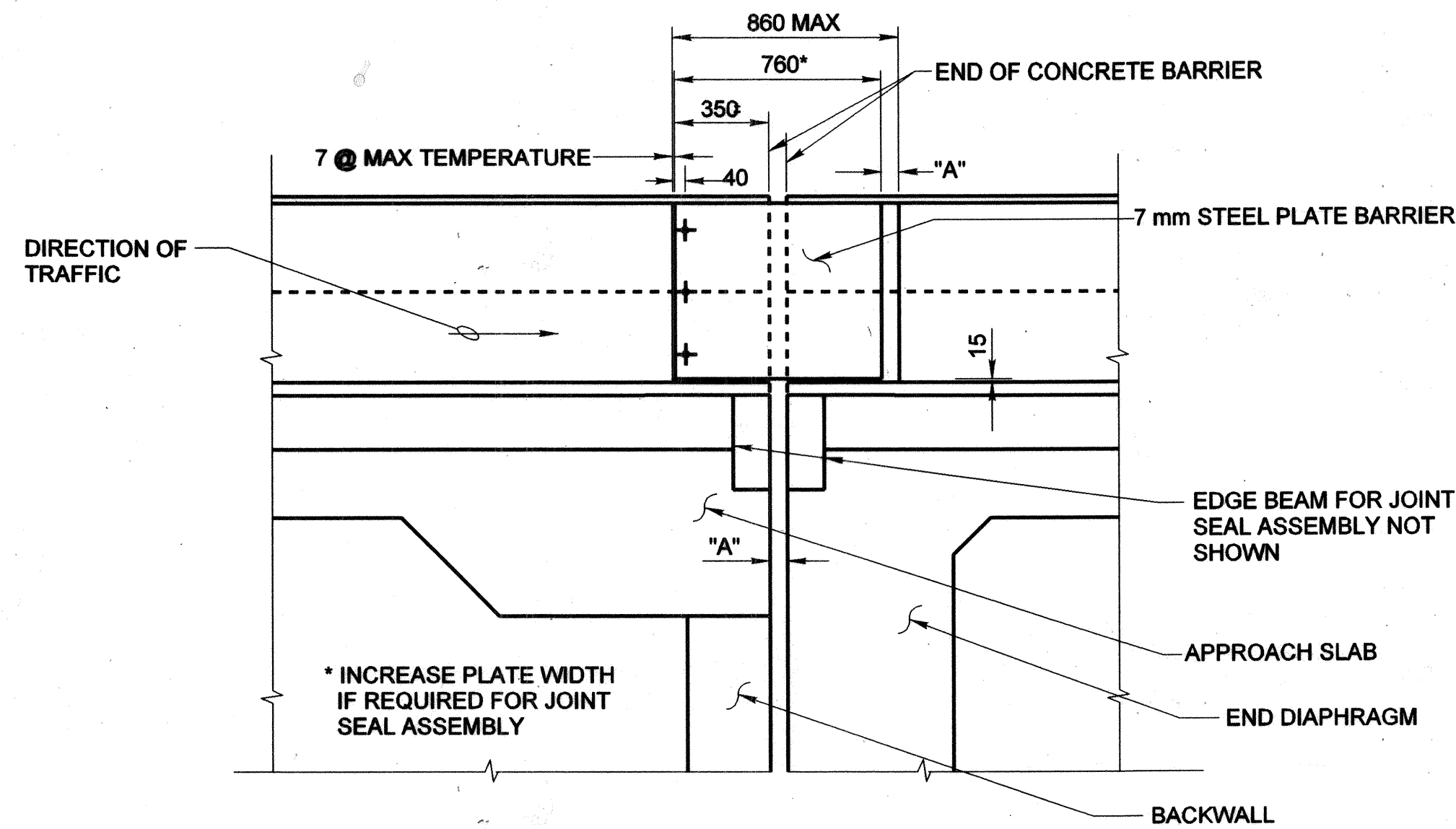


PLAN - DECK JOINT (@ WIDENED NORTH BARRIER)

1:40

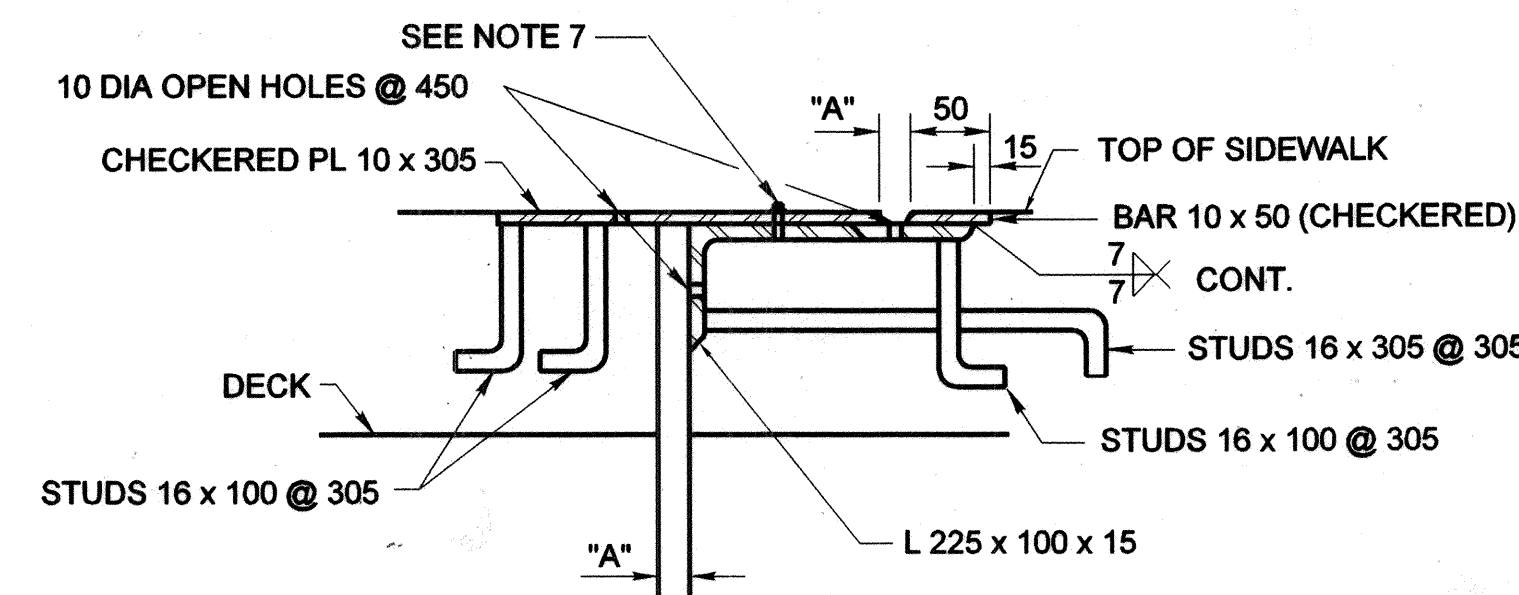
JOINT INFORMATION		"A" DIMENSIONS				
LOCATION	MOVEMENT RATING (M.R.)	WINTER	SPRING AND FALL	SUMMER	BLOCKOUT WIDTH "B"	BLOCKOUT DEPTH "H"
ABUT 1	140	90	65	40	400	360
ABUT 5	140	90	65	40	400	360

* USED WINTER VALUES



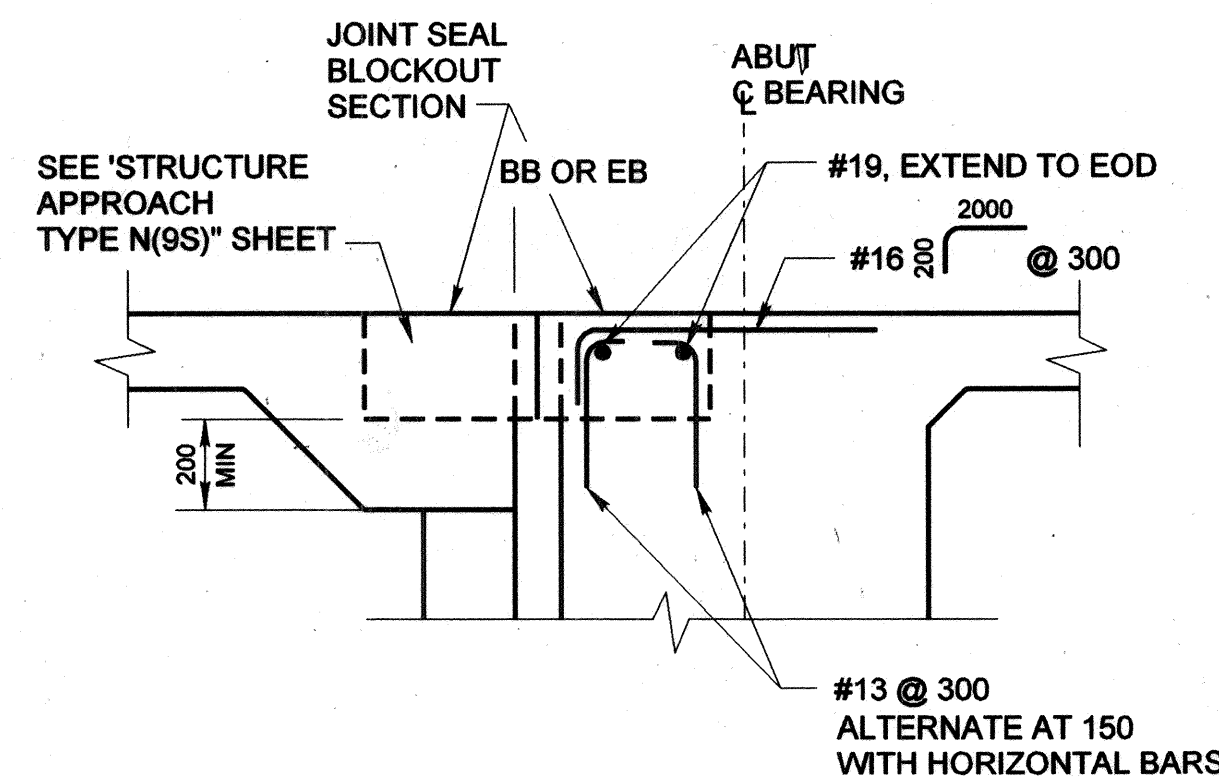
SECTION A-A

1:40



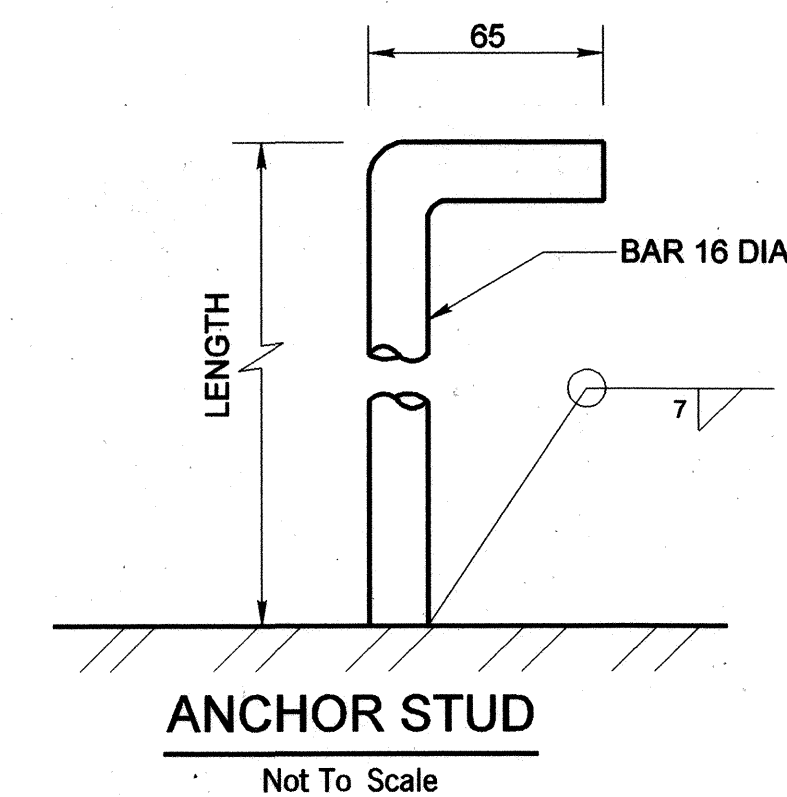
SECTION B-B

Not To Scale



BLOCKOUT REINFORCING

NO SCALE



ANCHOR STUD

Not To Scale

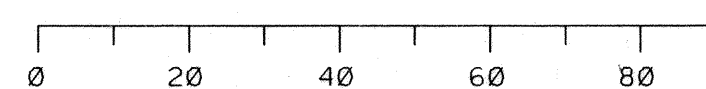
LEGEND

- INDICATES EXIST STRUCTURE
- /// INDICATES BRIDGE REMOVAL

NOTES:

- JOINT SEAL ASSEMBLY DETAILS INDICATED HERE ARE FOR ILLUSTRATIVE PURPOSES ONLY. DETAIL DESIGN IS THE RESPONSIBILITY OF THE CONTRACTOR.
- COORDINATE BLOCKOUT DIMENSIONS WITH JOINT SEAL MANUFACTURER.
- JOINT SEAL ASSEMBLY SHALL MATCH THE EXISTING JOINT SEAL TYPE. THE EXISTING GLAND(S) SHALL BE REMOVED AND REPLACED. NO SPLICING OF THE GLANDS SHALL BE PERMITTED.
- FULL PENETRATION BUTT WELDS MAY BE SUBSTITUTED FOR THE FILLET WELDS ON ALL ANCHOR STUDS.
- EXPANSION ARMOR ASSEMBLY TO BE GALVANIZED AFTER FABRICATION.
- EXPANSION ARMOR ASSEMBLY TO BE FABRICATED IN 4.2 m MAXIMUM LENGTHS.
- 7 mm CAP SCREW AND 76 mm PL WASHER @ 450 CENTERS. 51 mm DIA HOLE IN TOP PL. DRILL AND TAP BOTTOM PL. REMOVE SCREWS AFTER CONCRETE HAS SET.
- ALTERNATE TYPES OF ANCHOR STUDS MAY BE PERMITTED SUBJECT TO THE APPROVAL OF THE ENGINEER.
- FOR SECTIONS AND DETAILS NOT SHOWN, SEE "JOINT SEAL ASSEMBLY DETAILS NO. 2 (MR = 140)" SHEET.

FOR REDUCED PLANS ORIGINAL SCALE IS IN MILLIMETERS



ALL DIMENSIONS ARE IN MILLIMETERS UNLESS NOTED OTHERWISE.

ORANGE COUNTY PUBLIC FACILITIES AND RESOURCES DEPARTMENT	
CROWN VALLEY PARKWAY BRIDGE (WIDENING) OVER ARROYO TRABUCO JOINT SEAL ASSEMBLY DETAILS NO. 1 (MR = 140)	
DESIGNED: M. SARWAR	SHEET
DRAWN: R. DANLEY	41
CHECKED: J. SARAH	OF 55
SCALE: AS SHOWN	DATE: MAY 01, 2003
DRAWING NO.	

PREPARED UNDER RESPONSIBLE CHARGE OF:

H. YEE
NO. 54757
12/31/03
CIVIL
8/6/03

FILE NAME: M:\26144\Struct\jointseal1_w.dgn
DATE PLOTTED: 7/23/2003 11:06:52