

EXTERNAL SHEAR KEY SEE "ABUTMENT DETAILS NO. 3" SHEET

FRACTURED RIB TEXTURE SEE "ABUTMENT DETAILS NO. 3" SHEET

NOTE: NOT ALL TEXTURING SHOWN FOR CLARITY

TOP OF SLOPE

COVER MIN 915

EXPANDED POLYSTYRENE (BO-13 13-2)

CONCRETE BARRIER AND APPROACH SLAB NOT SHOWN FOR CLARITY

#16 @ 450, BOTH FACES OF ABUTMENT WALL DRILL AND BOND IN 200 DEEP HOLE, TYP

3950 SEE NOTE 6

PLACE BEARING ASSEMBLY LEVEL, TYP

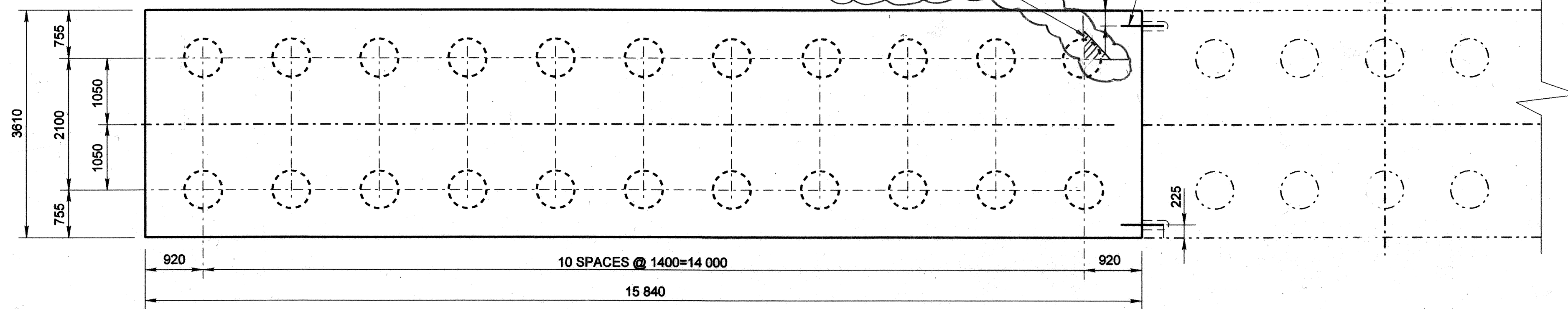
300 MIN BELOW FG

NOTE: ALL PILES NOT SHOWN FOR CLARITY.

ABUTMENT 5 ELEVATION
1:50

REMOVED - 0.305 mm OF CORNER OF EXISTING RETAINING WALL FOOTING CONFLICTING WITH PILE INSTALLATION

DRILL AND BOND DOWEL, 4 TOTAL



ABUTMENT 5 FOOTING AND PILE LAYOUT
1:50

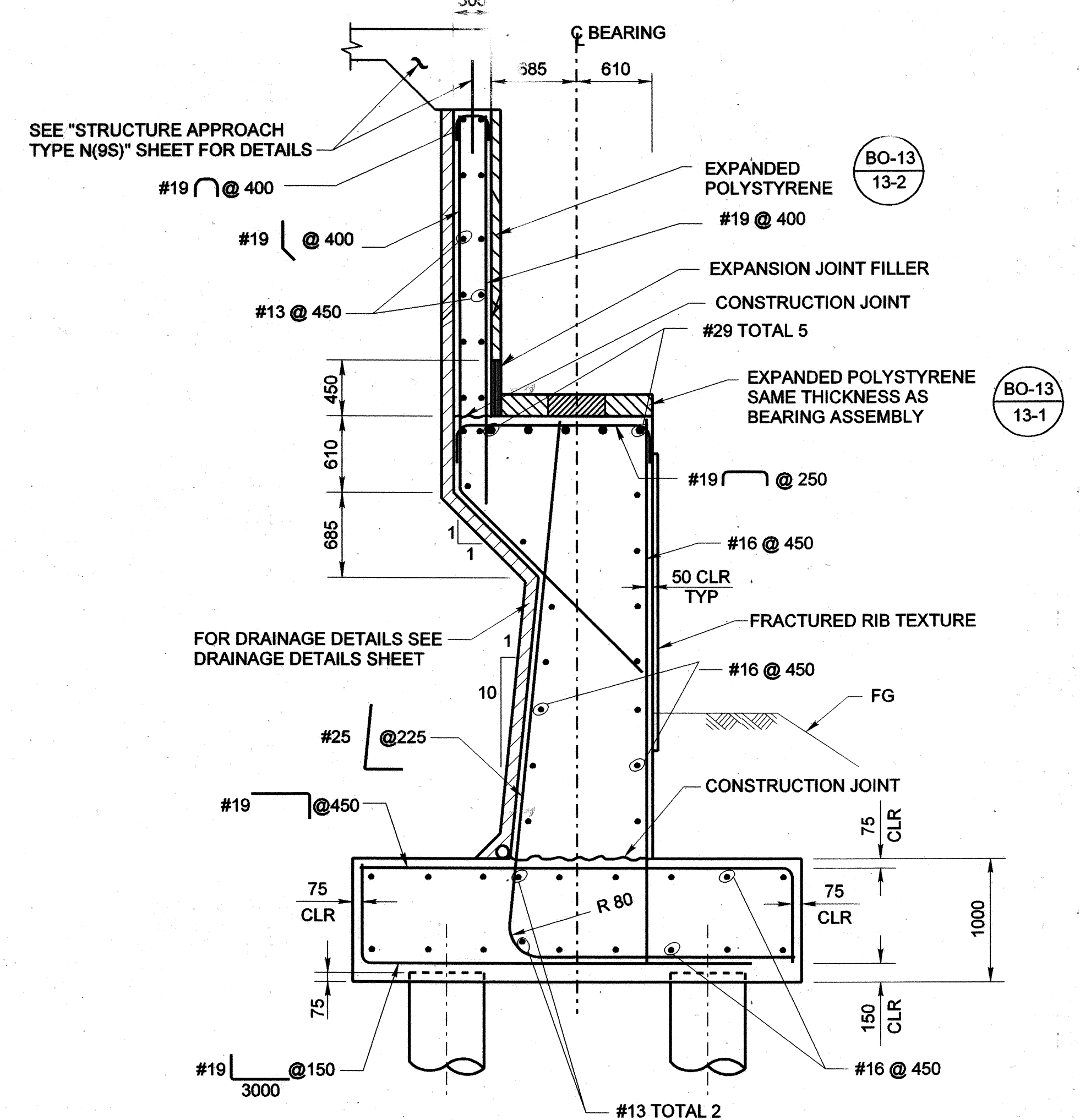
FOR REDUCED PLANS ORIGINAL SCALE IS IN MILLIMETERS

LEGEND

- INDICATES PLUMB CIRC PILE
- INDICATES EXIST STRUCTURE
- INDICATES BRIDGE REMOVAL

Washington
Washington Infrastructure Services, Inc.
17300 Redhill Avenue, Suite 150
Irvine, CA 92614

File Name: M:\26144\Struct\Abutment2.w.dgn
Date Plotted: 7/23/2003 10:55:29



NOTES:

- FOR DETAILS NOT SHOWN SEE "ABUTMENT DETAILS NO. 3" SHEET.
- USE DIMENSION "A" SHOWN ON "JOINT SEAL ASSEMBLY DETAILS (MR = 140)" SHEET FOR EXPANSION JOINT THICKNESS.
- UTILITY OPENINGS IN ABUTMENT BACKWALL. FOR LOCATION AND DETAILS, SEE "TYPICAL SECTION" SHEET, TYP.
- ALL UTILITY OPENINGS PER CALTRANS STD PLAN B7-10.
- 890 X 890 SDO&E UTILITY OPENING THROUGH BACKWALL AND END DIAPHRAM.
- CHIP OUT APPROX 350 MM DEPTH OF EXIST SHEAR KEY. BURN BACK EXIST REINF 50 MM DEEP AND EPOXY GROUT HOLES.

ALL DIMENSIONS ARE IN MILLIMETERS UNLESS NOTED OTHERWISE.

ORANGE COUNTY PUBLIC FACILITIES AND RESOURCES DEPARTMENT	
CROWN VALLEY PARKWAY BRIDGE (WIDENING) OVER ARROYO TRABUCO ABUTMENT DETAILS NO. 2	
DESIGNED: S. MICHALSKI	SHEET
DRAWN: R. DANLEY	28
CHECKED: J. SARAH	QF 55
SCALE: AS SHOWN	DATE: MAY 01, 2003
DATE: 8/4/03	