

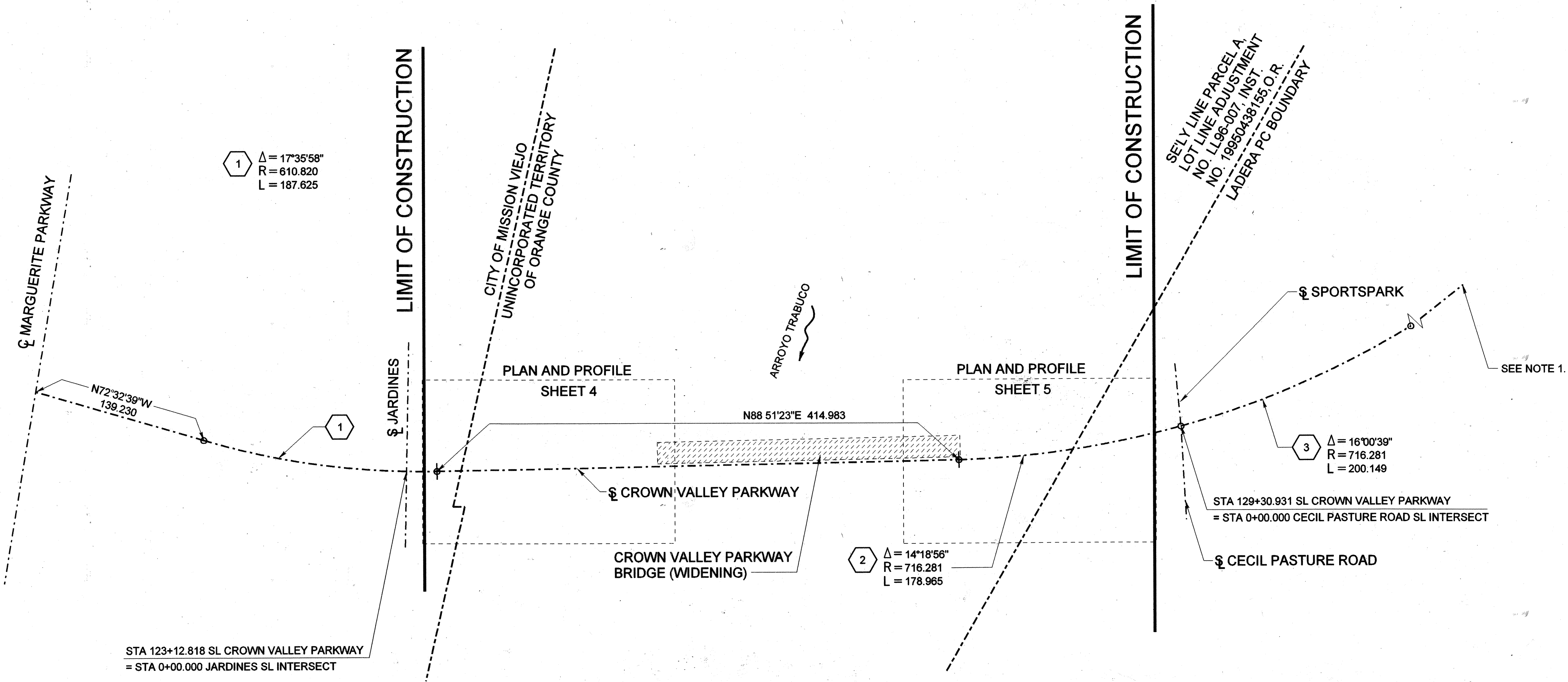
BASIS OF BEARINGS:

THE BEARINGS SHOWN HEREON ARE BASED ON THE BEARING BETWEEN OCS HORIZONTAL CONTROL STATION GPS NO. 9009 AND STATION GPS NO. 1426, BEING N61 10'47"E PER RECORDS ON FILE IN THE OFFICE OF THE ORANGE COUNTY SURVEYOR.

DATUM STATEMENT:

COORDINATES SHOWN ARE BASED ON THE CALIFORNIA COORDINATE SYSTEM, (CCS83) ZONE VI, 1983 NAD. (1991.35 EPOCH OCS GPS ADJUSTMENT)

ALL DISTANCES SHOWN ARE GROUND, UNLESS OTHERWISE NOTED.



PLAN
1:2000

NOTES:

1. SURVEY DATA PROVIDED BY HUITT-ZOLLARS, INC. REFERENCE THE CROWN VALLEY PARKWAY CENTERLINE CONTROL ON FILE AT HUITT-ZOLLARS (JOB NO. 10-0367-68) FOR MORE INFORMATION.
2. SURVEY DATA WAS PROVIDED IN IMPERIAL UNITS. CONVERSION TO METRIC UNITS IS BY THE FACTOR OF 39.37/12.



ORANGE COUNTY PUBLIC FACILITIES AND RESOURCES DEPARTMENT	
CROWN VALLEY PARKWAY KEY MAP AND PROJECT CONTROL	
DESIGNED: H. YEE	SHEET
DRAWN: R. DANLEY	2
CHECKED: J. SARAH	OF 55
SCALE: AS SHOWN	DATE: MAY 01, 2003
DRAWING NO.	

MARK	DATE	DESCRIPTION
REVISIONS		
PREPARED UNDER RESPONSIBLE CHARGE OF:		

M. HANNA
REGISTERED PROFESSIONAL ENGINEER
No. 42215
Exp. 3/31/04
DATE

MELAD HANNA
CE 42215 EXP. 03-31-04