

INDEX OF SHEETS

SHEET NO	TITLE SHEET
" " 2	GENERAL PLAN
" " 3	FOUNDATION PLAN
" " 4	ABUTMENT, BENT, & BULKHEAD DETAILS
" " 5	SUPERSTRUCTURE
" " 6	STRUCTURAL EXCAVATION & BACKFILL
" " 7	LOG OF TEST BORINGS

HIGHWAY DEPARTMENT COUNTY OF ORANGE Δ

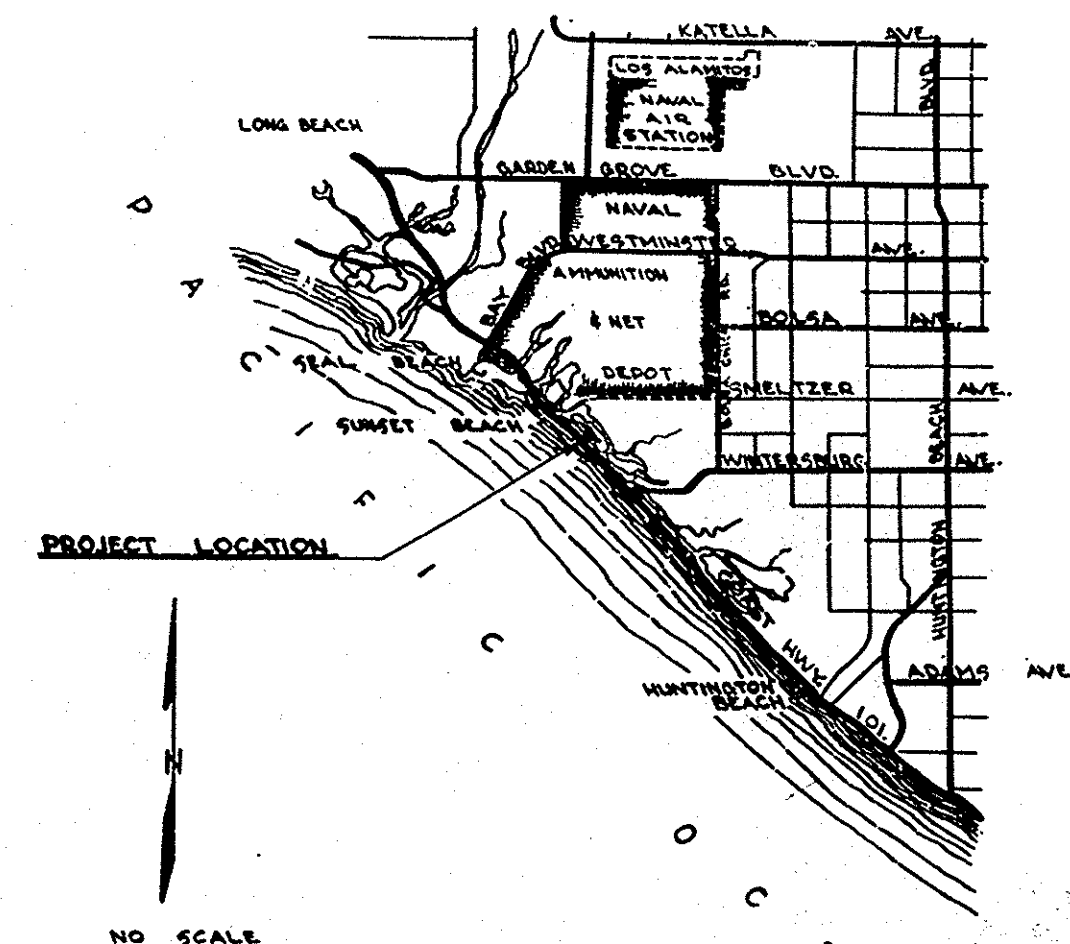
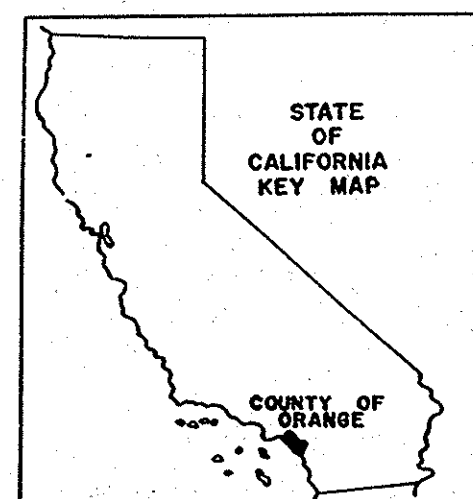
PLAN

BROADWAY BRIDGE AN-2

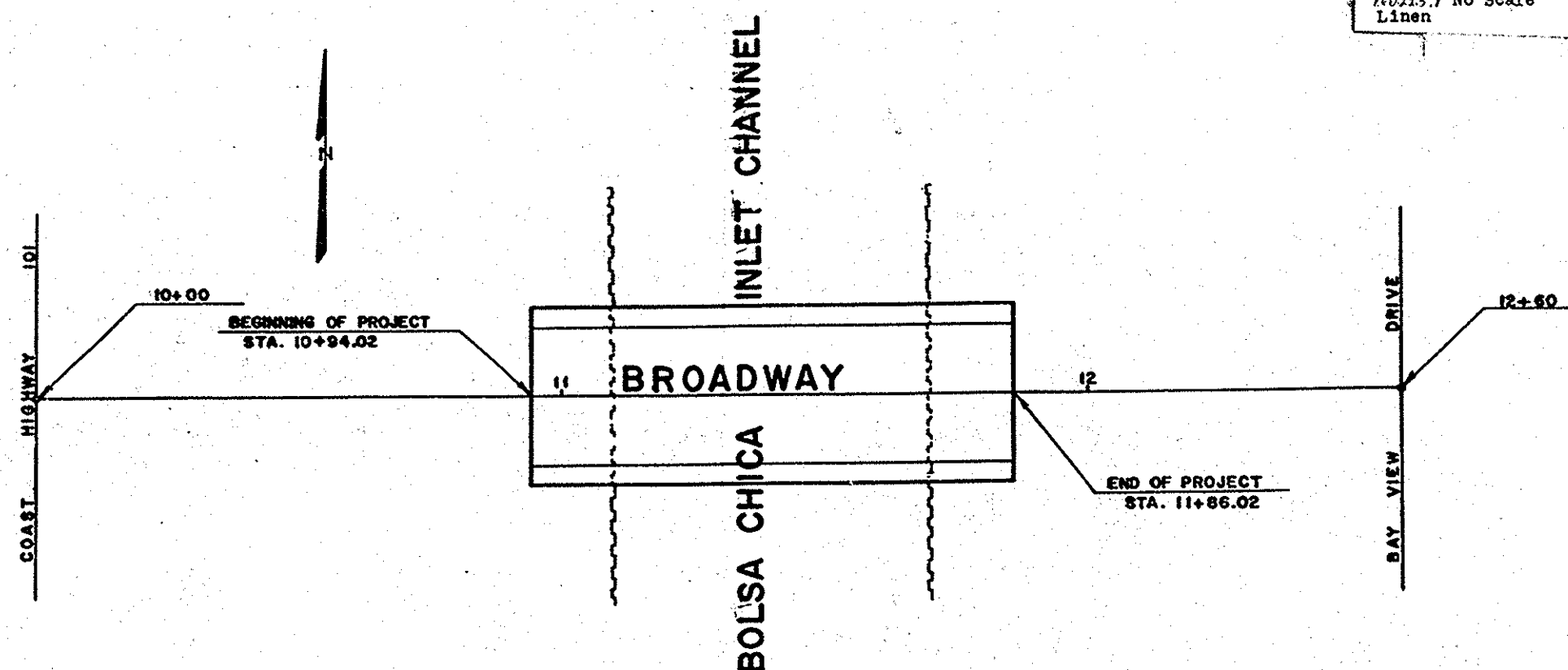
ACROSS BOLSA CHICA INLET
CHANNEL
IN SUNSET BEACH

FROM STATION 10+94.02 TO STATION 11+86.02

TOTAL LENGTH 0.0174 MILES



Bridge #AN-2
Broadway Bridge
Across Bolsa Chica Inlet
Channel
Sheet 1 of 7
Rolls: No Scale
Linen



COUNTY OF ORANGE
Allen A. Tach 3-2-59
ROAD COMMISSIONER
CIVIL ENGINEER LICENSE NO. 7872

John L. Williamson
HARBOR ENGINEER
CIVIL ENGINEER LICENSE NO. 7967

CONVENTIONAL SIGNS

COUNTY LINE	BANK-RETAINING WALL
CITY-TOWN LIMITS	LEVEE
TOWNSHIP LINE	CULVERTS
SECTION LINE	DROP INLETS
GRANT LINE	TROLLEY POLE
FENCE	POWER POLE
GUARD RAIL	POWER TOWER
UNFENCED PROPERTY	TELEGRAPH POLE
R/W LINE	TELEPHONE POLE
BASE OR SURVEY LINE	MARSH
TRAVELLED WAY	
RAILROAD TRACKS	

LAYOUT PLAN

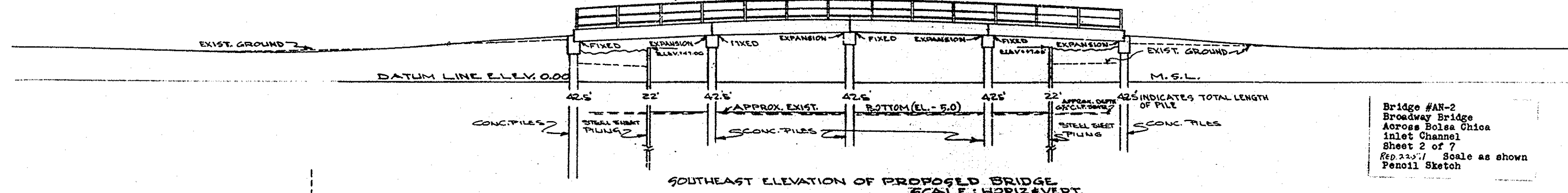
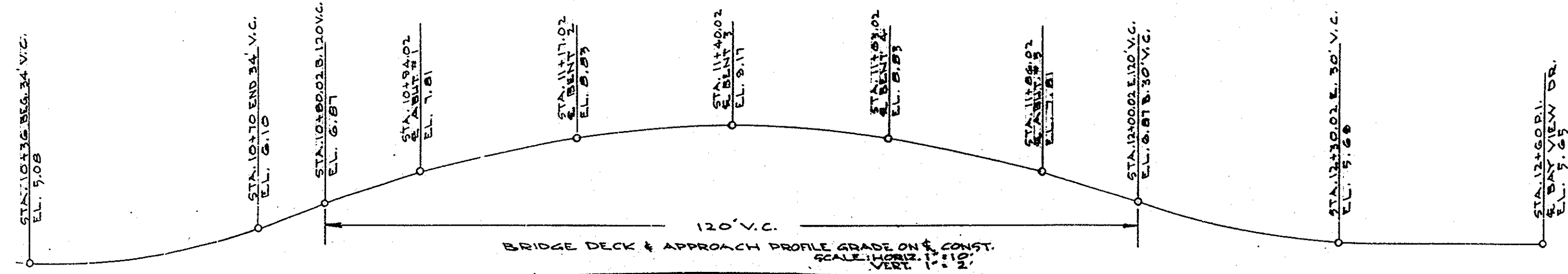


AN-2

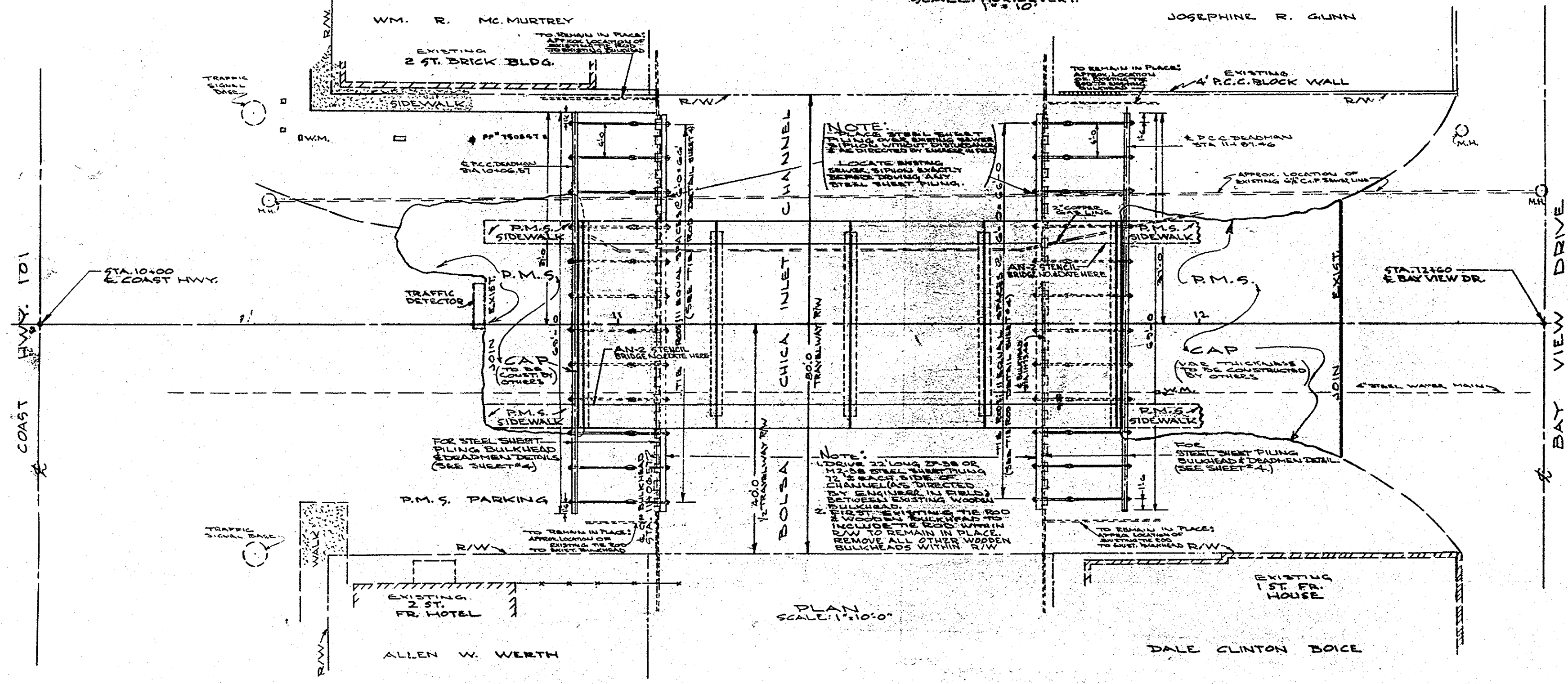
Broadway Bridge

AN-2

#14503 BROADWAY BRIDGE
OVER SUNSET CHANNEL
1959- AN-2
55C-283
Thomas: 826-J7



Bridge #AN-2
Broadway Bridge
Across Bolsa Chica
Inlet Channel
Sheet 2 of 7
Rep. 2-25-71 Scale as shown
Penoll Sketch



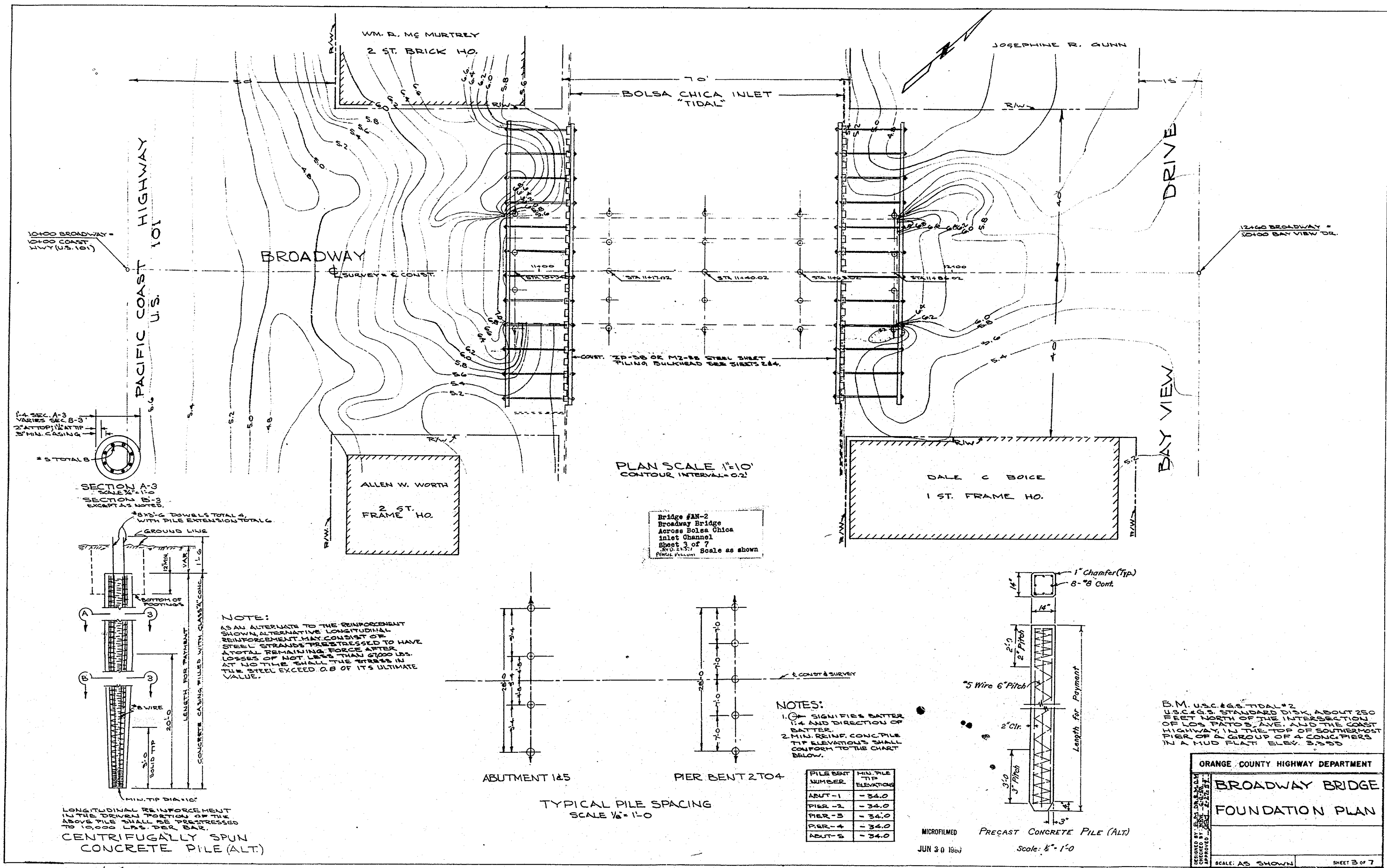
NOTE: UTILITIES ON EXISTING BRIDGE TO BE RELOCATED BY OTHERS

ORANGE COUNTY HIGHWAY DEPARTMENT	
BROADWAY BRIDGE	
GENERAL PLAN	
DESIGNED BY: J. W. S. 10-5-69	CHECKED BY: J. W. S. 10-5-69
APPROVED: J. W. S. 10-5-69	SCALE: AS SHOWN
SHEET 2 OF 7	

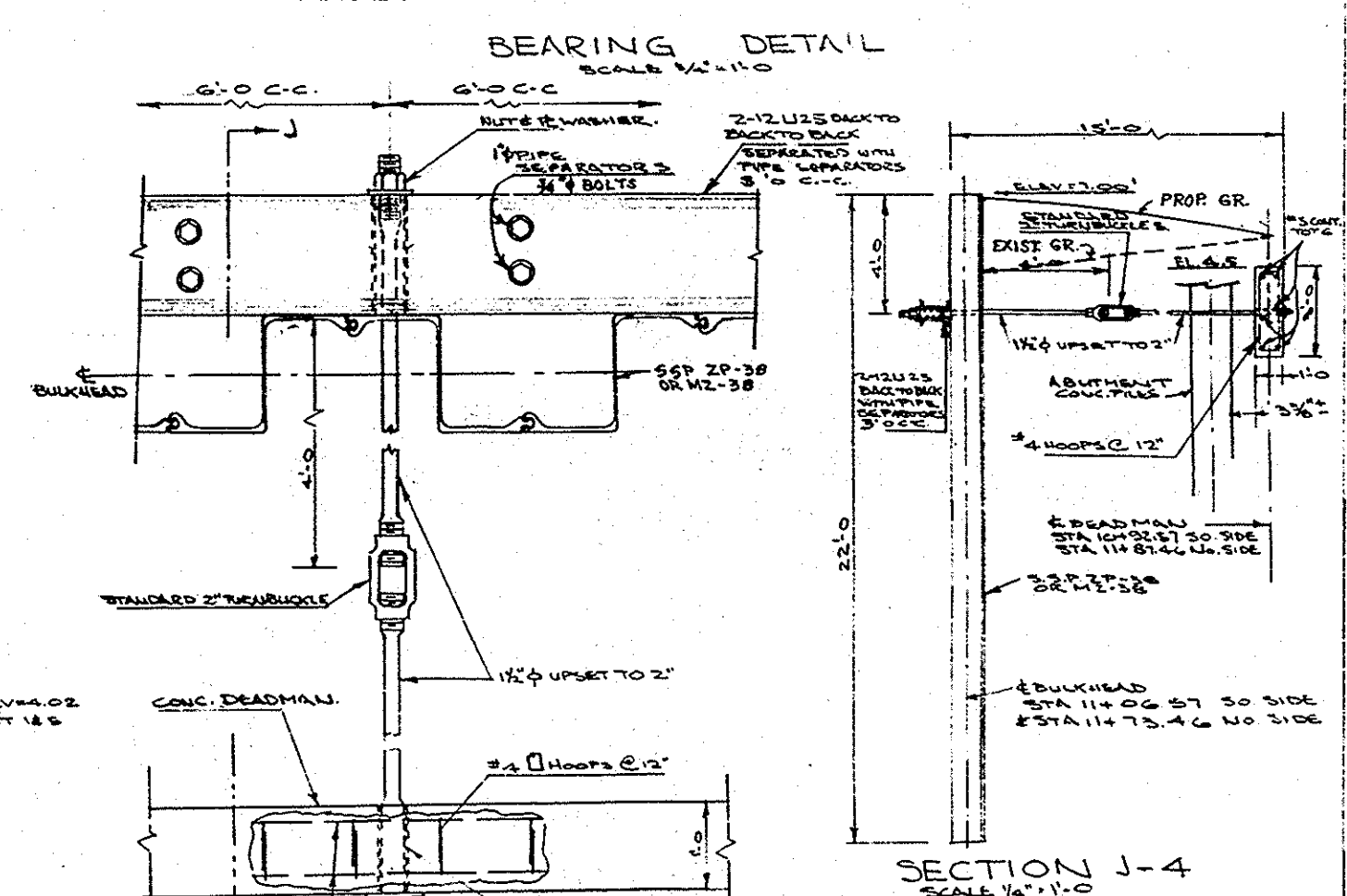
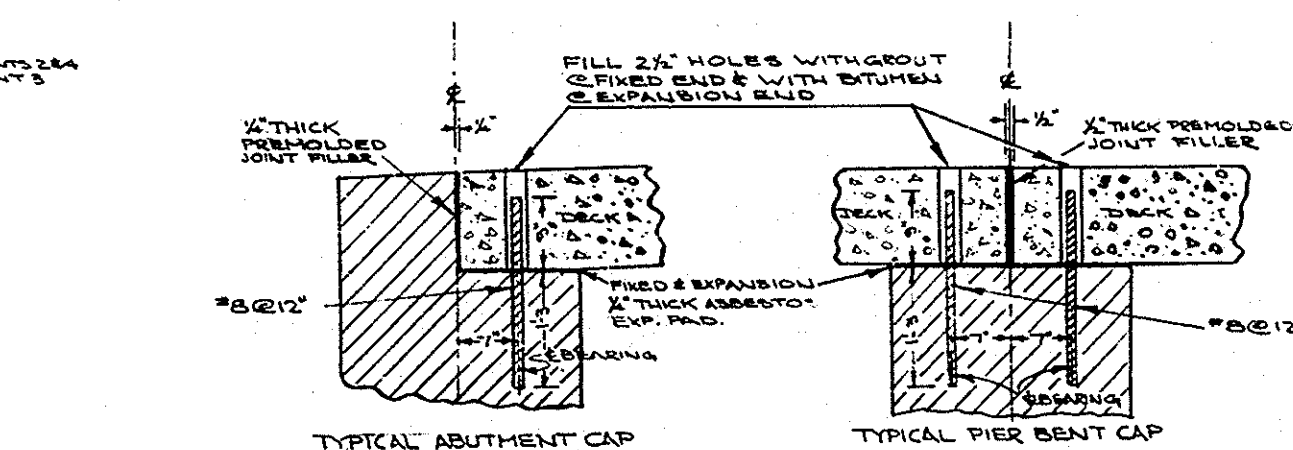
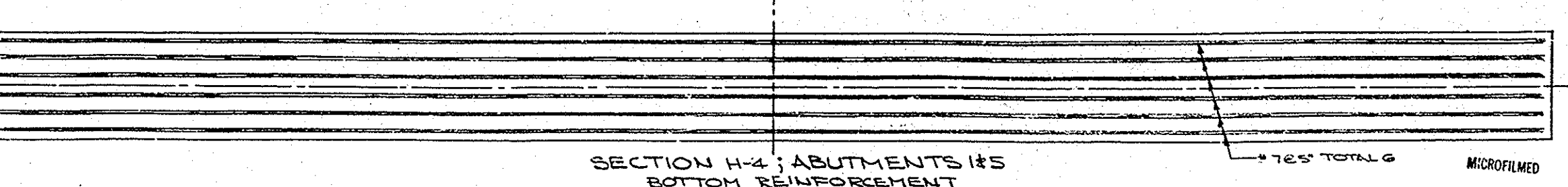
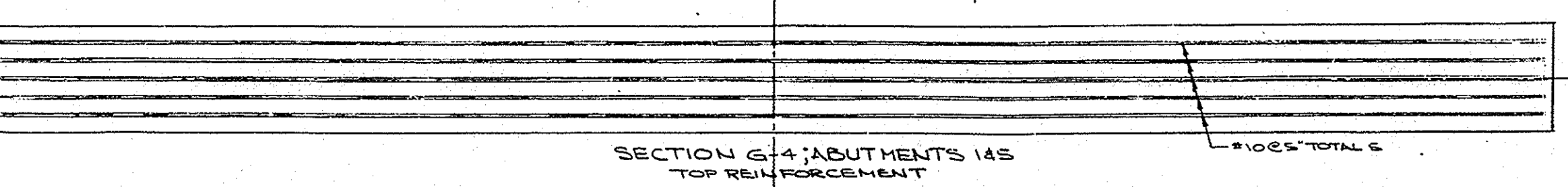
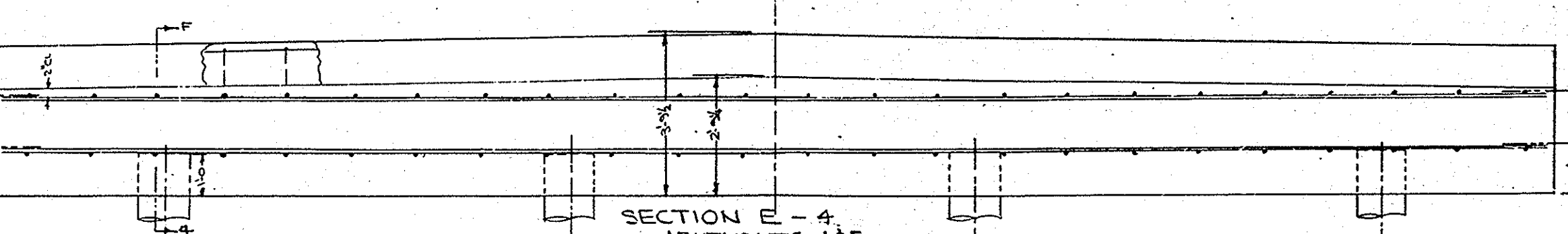
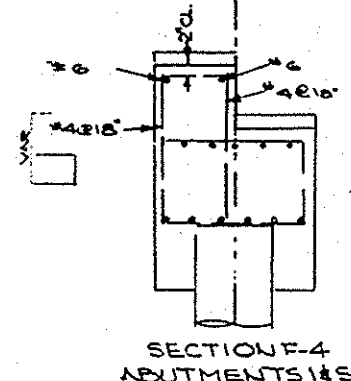
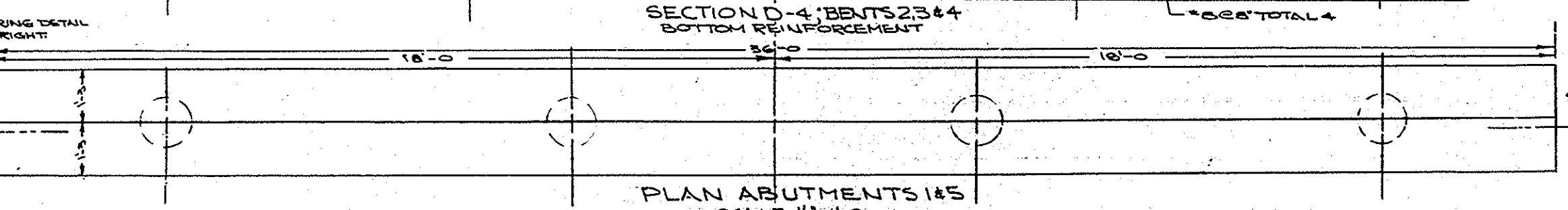
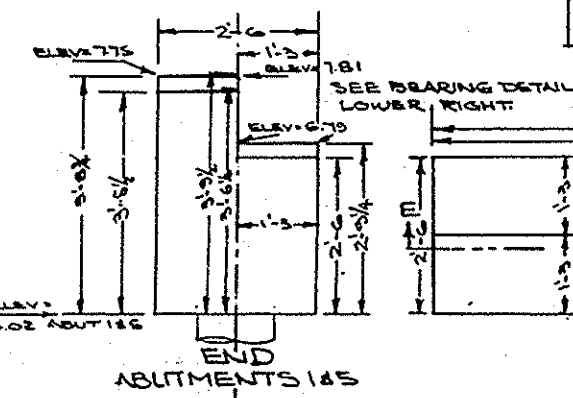
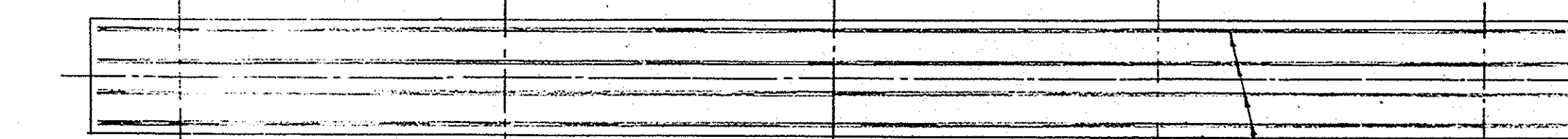
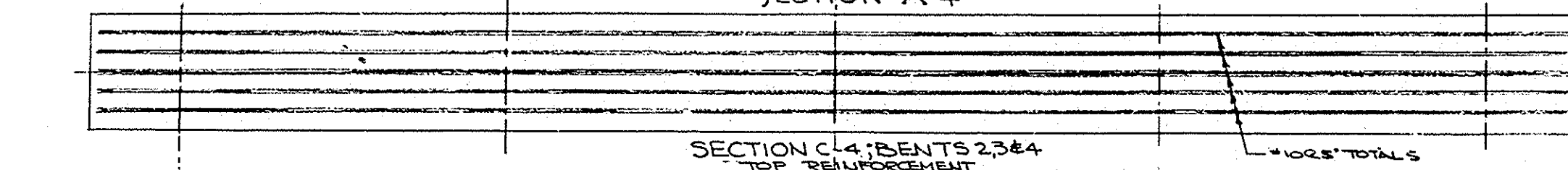
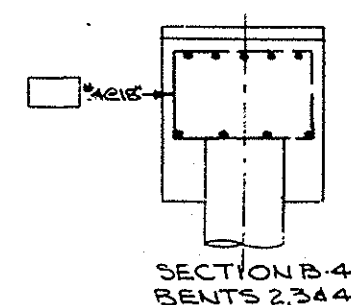
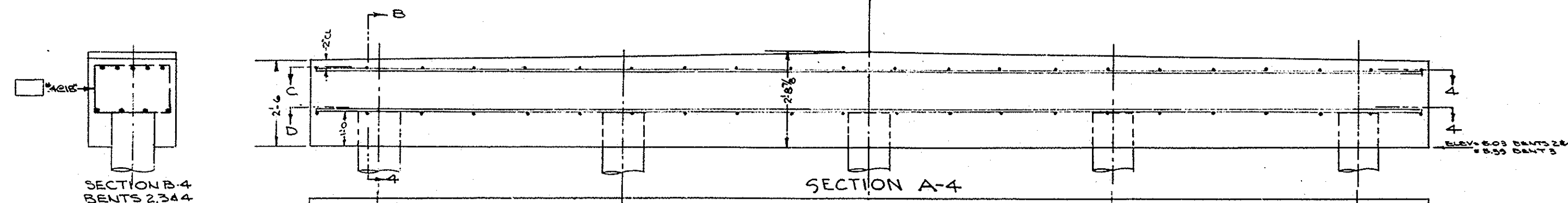
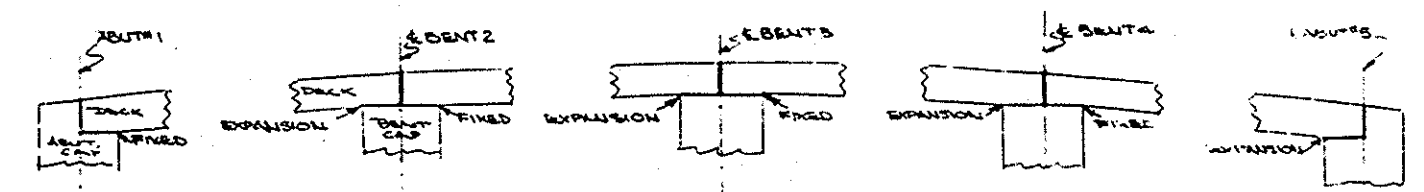
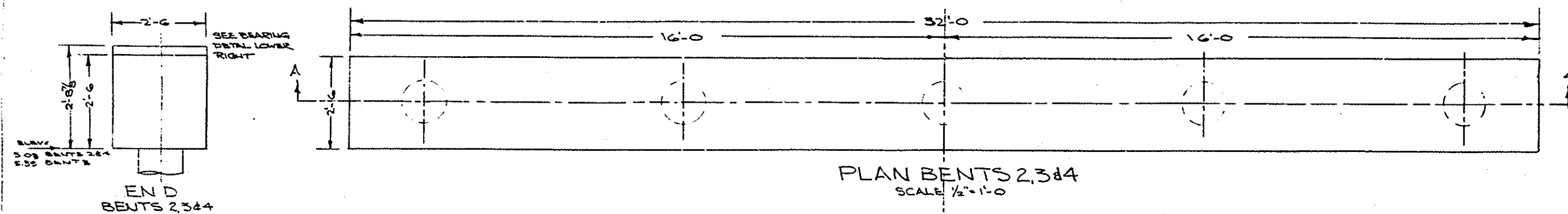
AN-2

AN-2

MICROFILMED
JUN 30 1980



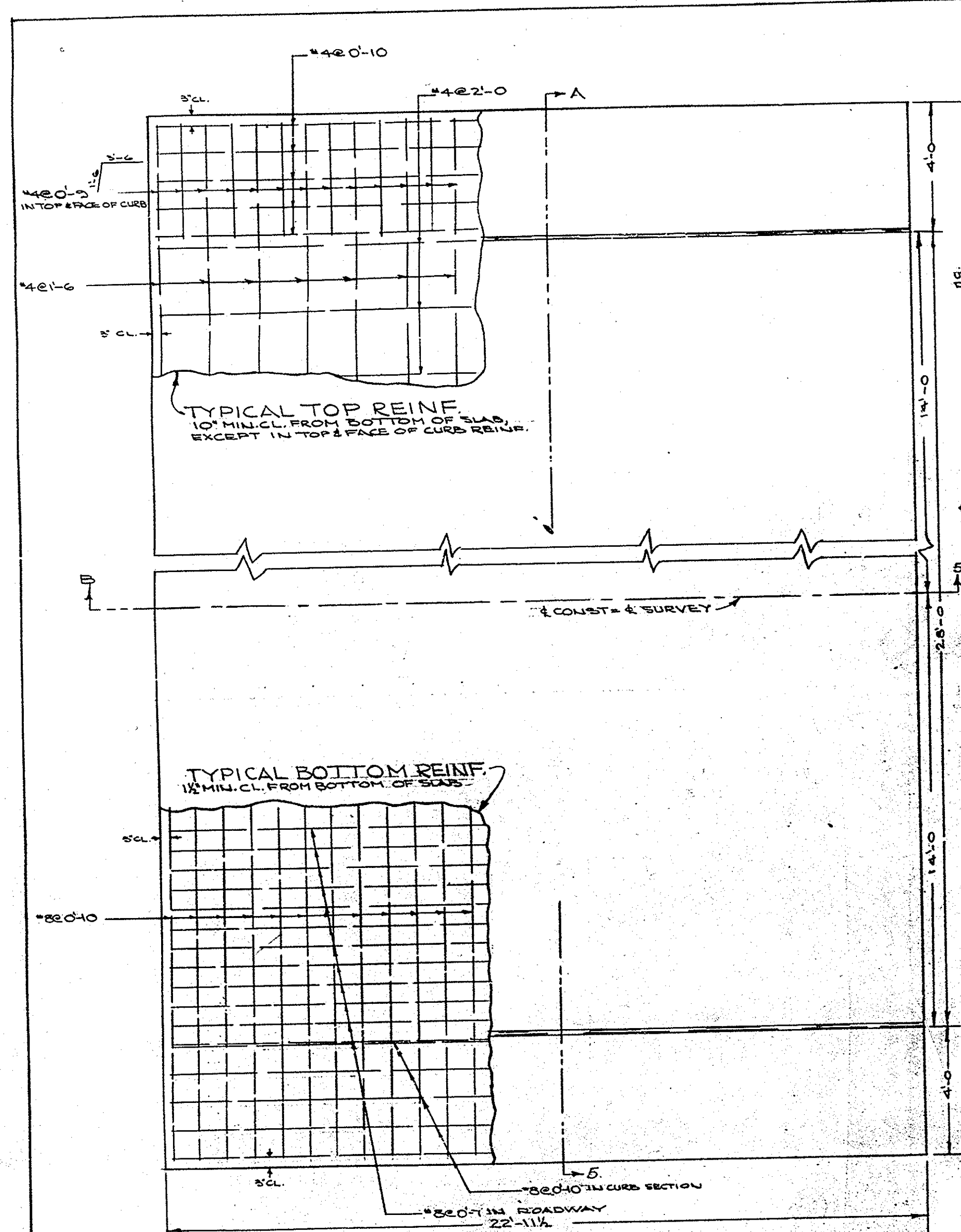
Bridge #AN-2
Broadway Bridge
Across Bolsa Chica
Inlet Channel
Sheet 4 of 7
No. 22-571 Scale as shown
Pencil Sketch



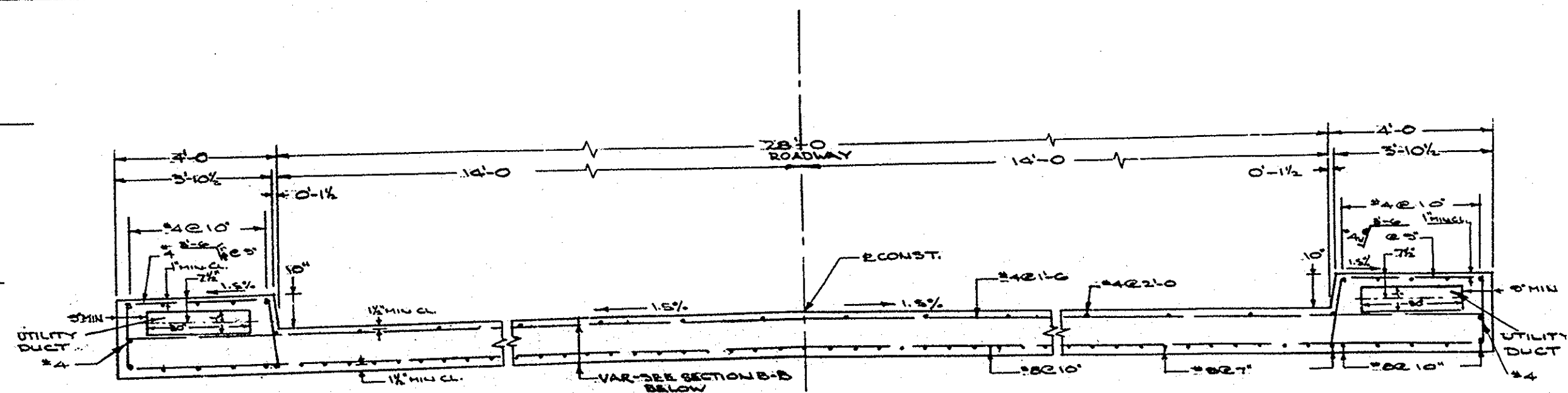
NOTES (CONT.)
1. ALL TIE-BACK METAL SHALL BE PROTECTED BEFORE AND AFTER CONCRETE IS PLACED TO PREVENT CORROSION.
2. ALL CONCRETE FOR TIE-BACK METAL SHALL BE CLASS "A" (SACK MIX) P.C.C.
3. ALL CONCRETE SHALL BE THOROUGHLY DRY BEFORE ANY SUCCEEDING COAT IS APPLIED.

ORANGE COUNTY HIGHWAY DEPARTMENT
BROADWAY BRIDGE
ABUTMENT, BENT
& BULKHEAD

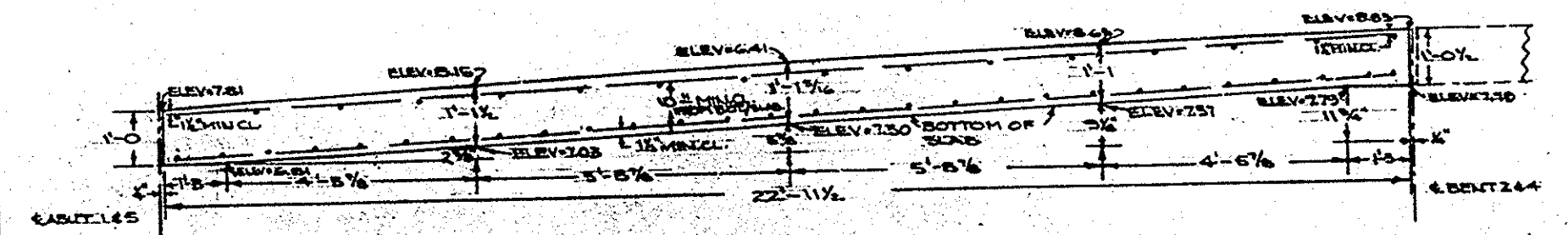
SCALE: AS SHOWN SHEET 4 OF 7



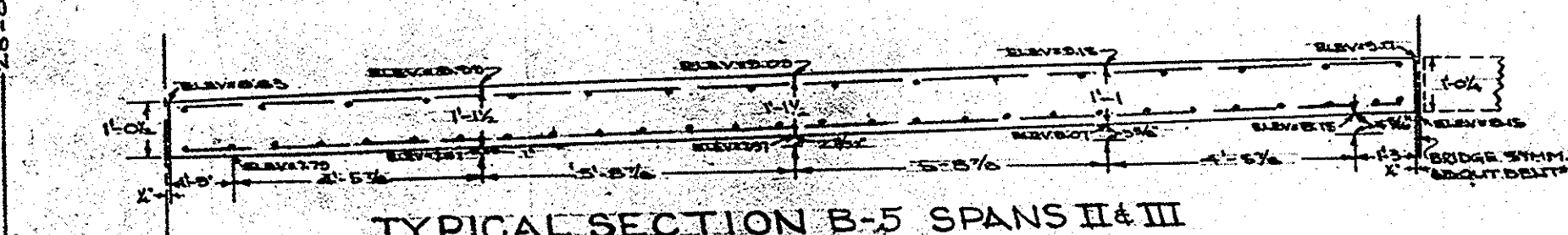
PLAN SPANS I to IV
SCALE 1/2" = 1'-0"



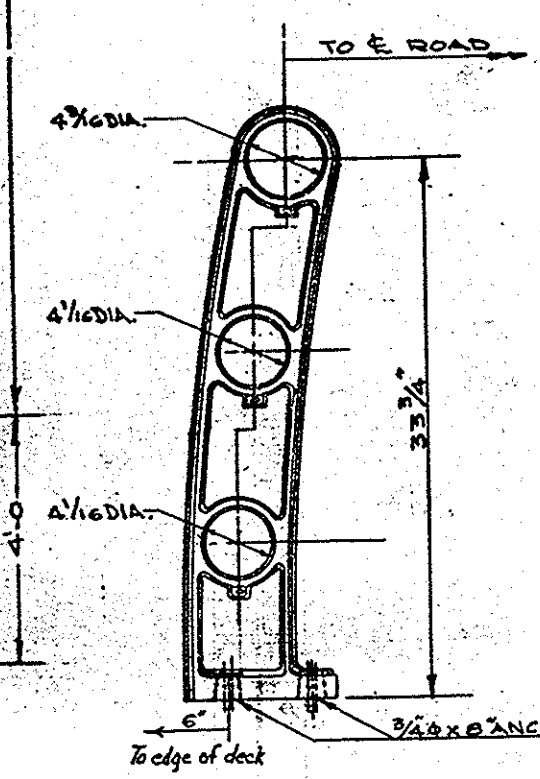
TYPICAL SECTION A-5
SCALE 1/2" = 1'-0"



TYPICAL SECTION B-5 SPANS I & IV
BRIDGE SYMMETRICAL ABOUT BENT #3
SCALE 1/2" = 1'-0"



TYPICAL SECTION B-5 SPANS II & III
BRIDGE SYMMETRICAL ABOUT BENT #3
SCALE 1/2" = 1'-0"



TYPICAL RAILING POST

DESCRIPTION	SIZE
TOP RAIL	4 1/2" O.D. x 1/8" WALL
MIDDLE RAIL	4" O.D. x 1/8" WALL
BOTTOM RAIL	4" O.D. x 1/8" WALL

NOTE:
POST TO BE PERM. MOLD CASTING
REYNOLDS #3 RI, ALCOA #3001
OR EQUAL.

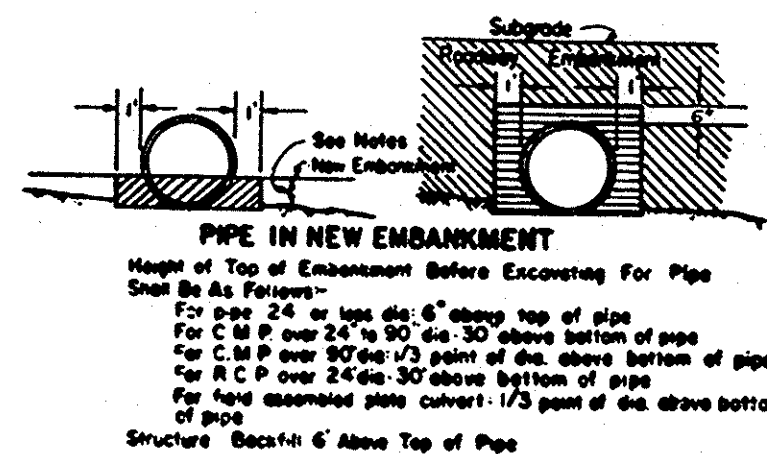
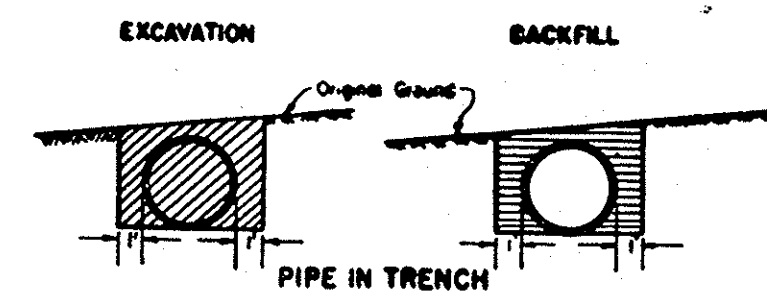
NOTE:
1- RAILINGS NOT SHOWN
2- SET ANCHOR BOLTS TO
MATCH FABRICATED
RAILING.

Bridge #AN-2
Broadway Bridge
Across Bolsa Chica
Inlet Channel
Sheet 5 of 7
R.D. 12.5.1 Scale as shown
Penon Sketch

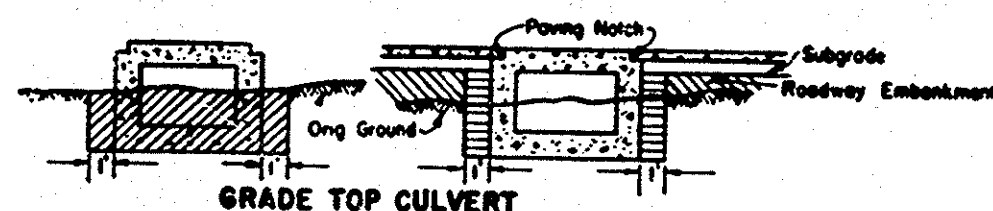
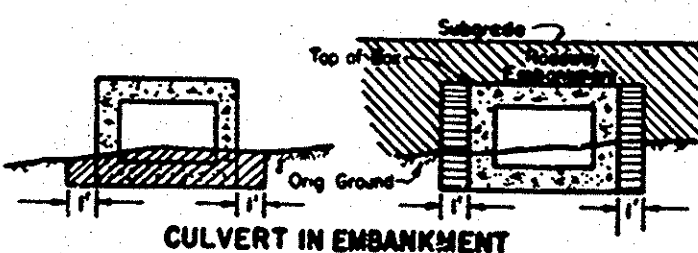
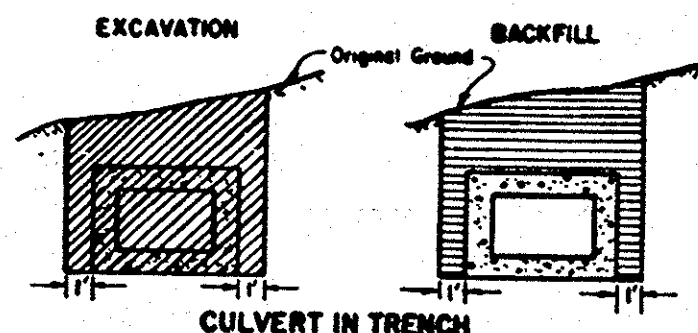
ORANGE COUNTY HIGHWAY DEPARTMENT	
BROADWAY BRIDGE	
SLAB & MISCELLANEOUS DETAILS	
SUPERSTRUCTURE	
SCALE: AS SHOWN	SHEET 5 OF 7

MICROFILMED
JUN 30 1960

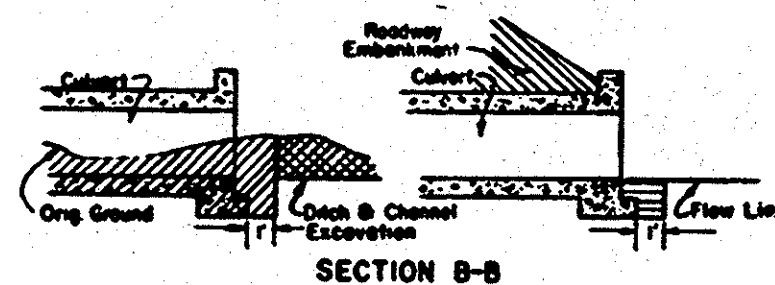
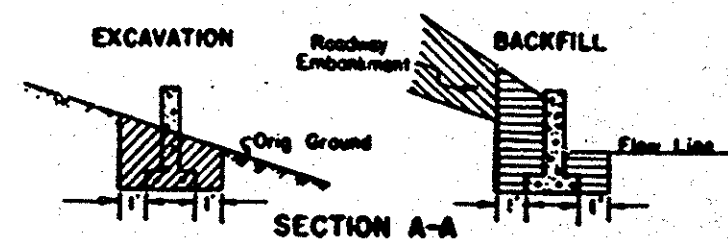
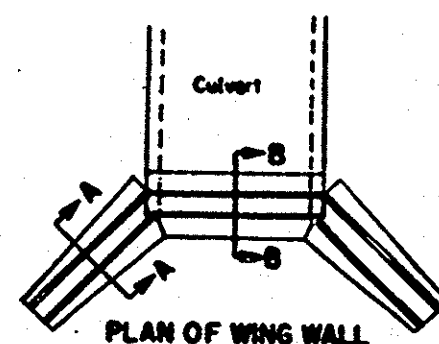
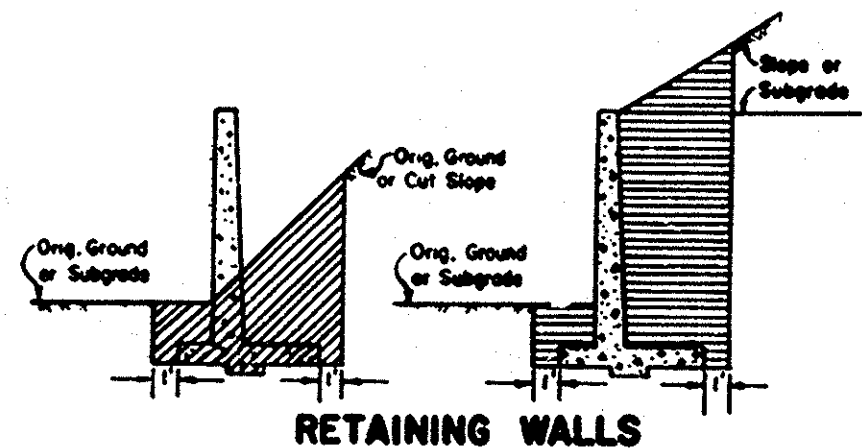
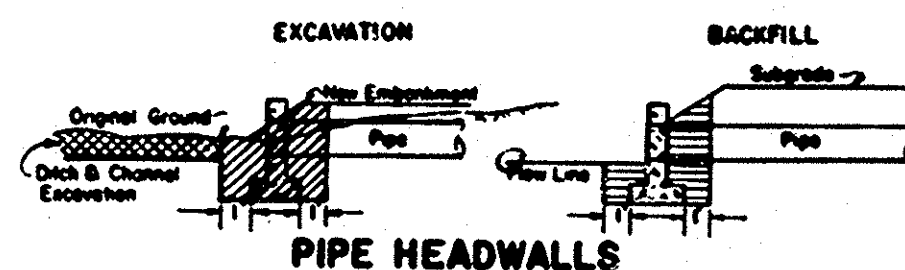
AN-2



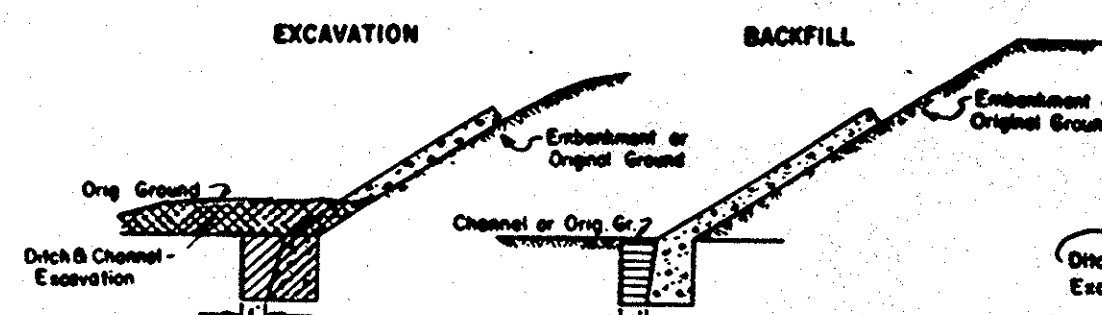
PIPES, RODS & DEADMEN Except Underdrains & Downdrains



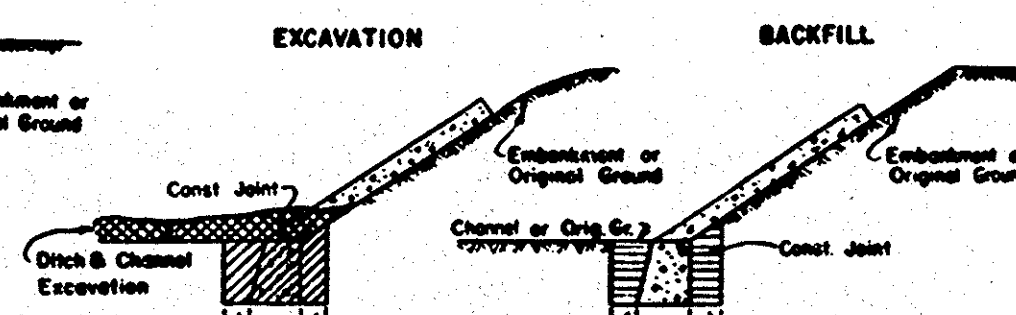
BOX CULVERTS



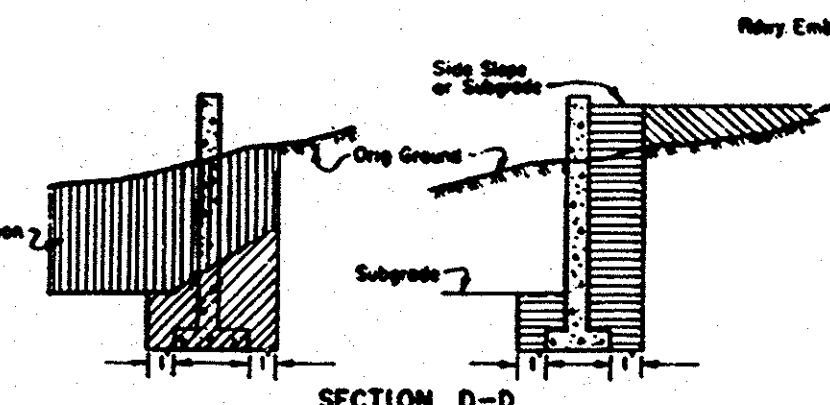
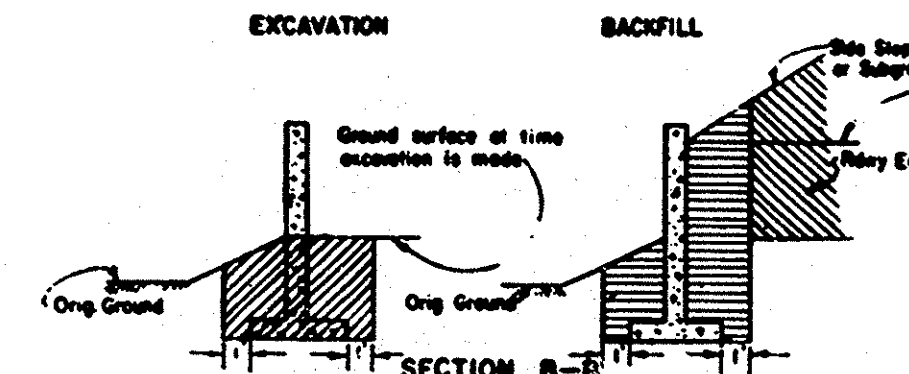
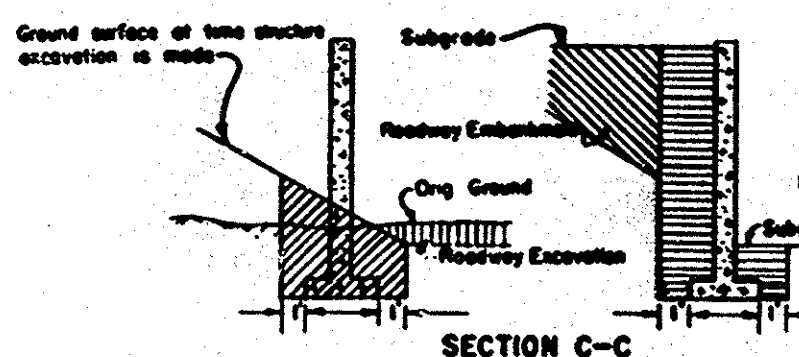
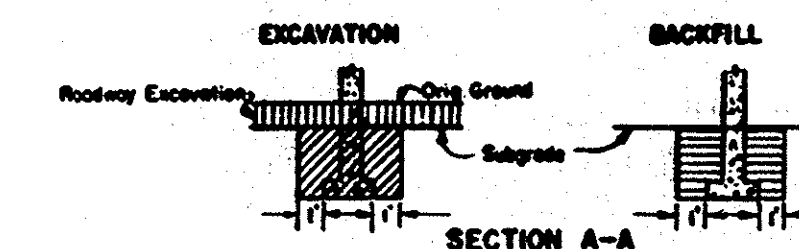
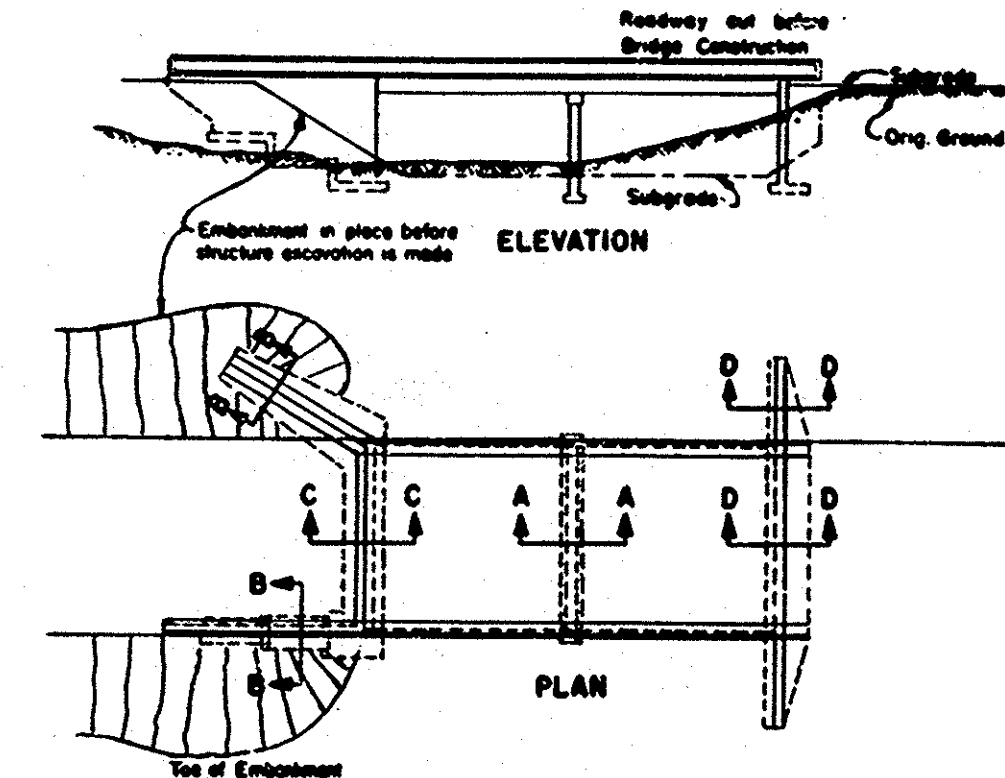
WING WALLS



CONCRETE SLOPE PAVING



BRIDGE ABUTMENTS & ADJOINING WING WALLS



Bridge #AN-2
Broadway Bridge
Across Bolsa Chica
Inlet Channel
Sheet 6 of 7
(6/22/60) Scale as shown
Linen

- LEGEND**
- Structure Excavation
 - Structure Backfill
 - Ditch & Channel Excavation
 - Roadway Embankment
 - Roadway Excavation
- Note: Subgrade shall be lowest subgrade as defined in the Standard Specifications.

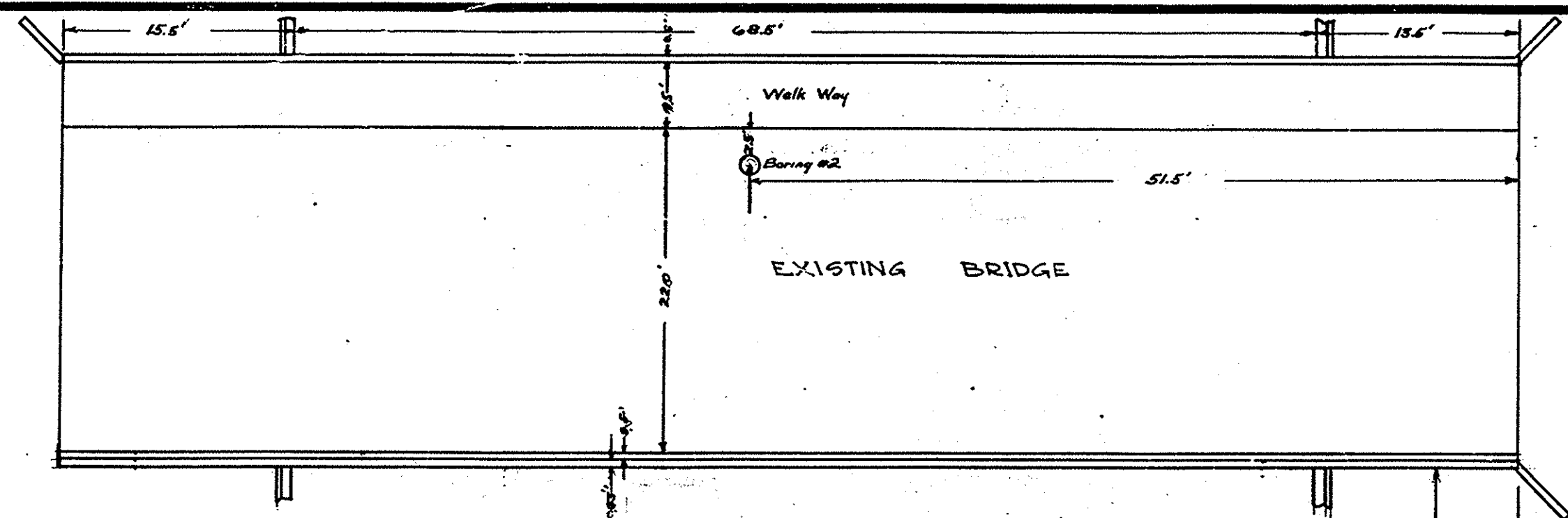
NOTE: THESE PLANS ADOPTED FROM THE
STANDARD PLANS, STATE OF CALIFORNIA,
DEPARTMENT OF PUBLIC WORKS,
DIVISION OF HIGHWAYS

ORANGE COUNTY HIGHWAY DEPARTMENT	
BROADWAY BRIDGE STRUCTURAL EXCAVATION & BACKFILL	
DESIGNED BY: [Signature]	CHECKED BY: [Signature]
APPROVED BY: [Signature]	DATE: 6/22/60
SCALE: AS SHOWN	SHEET 6 OF 7

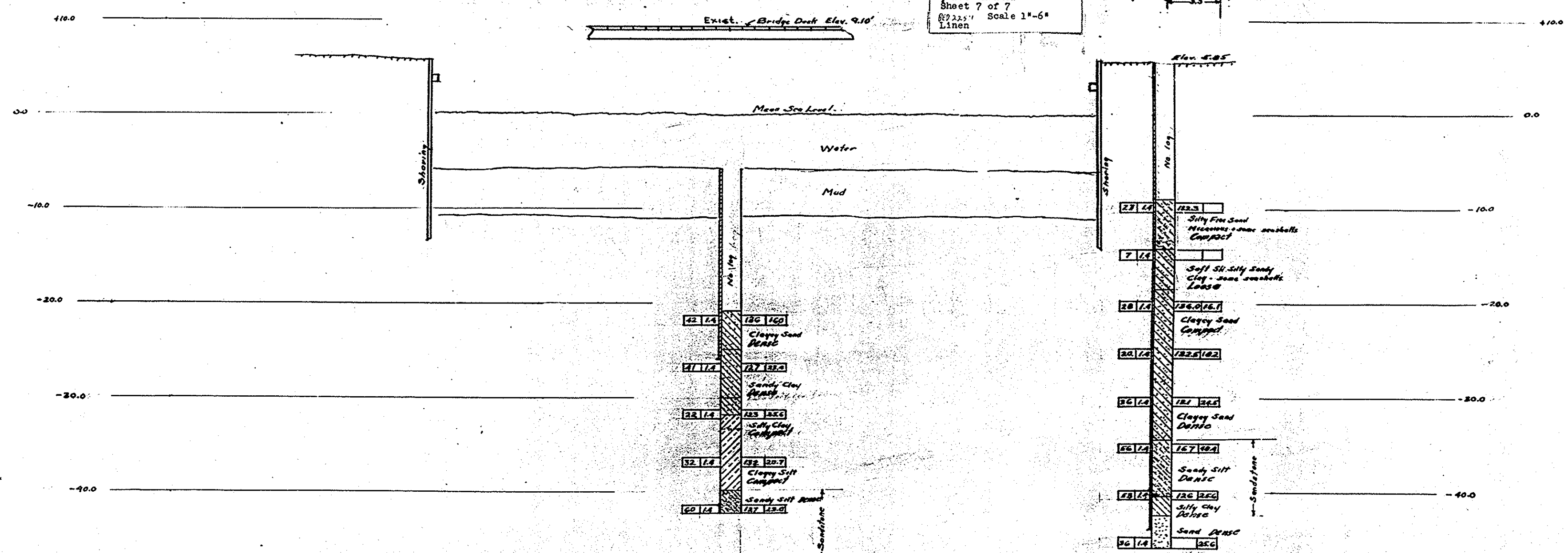
AN-2

AN-2

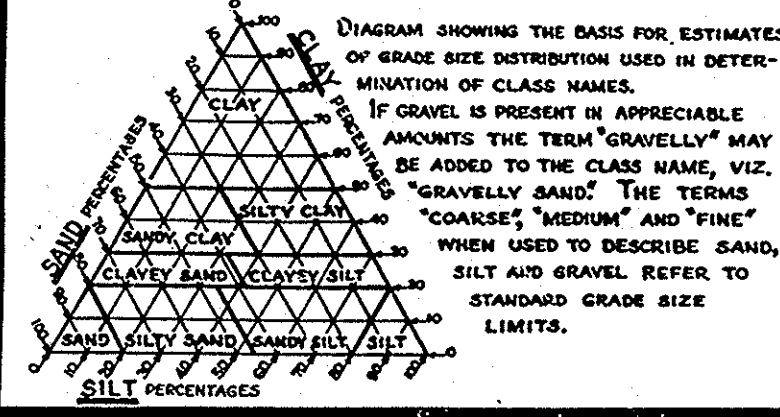
Bench Mark Int. Hwy 101 + Broadway, E. Signal
Light Base, 36' NE & Hwy 101, 36' SE & Broadway
Elevation 6.13'



Bridge #AN-2
Broadway Bridge
Across Bolsa Chica
Inlet Channel
Sheet 7 of 7
Scale 1" = 6'
Linen



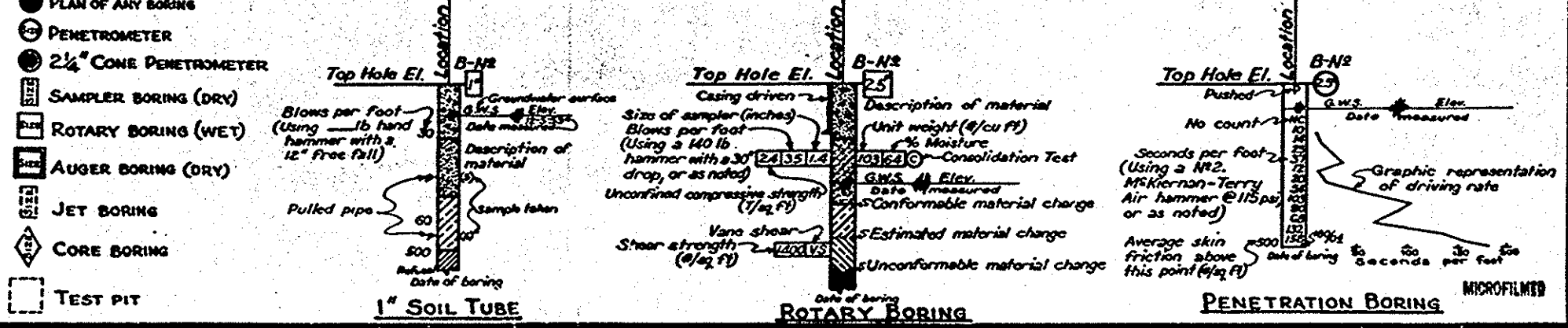
CLASSIFICATION OF MATERIAL BASED ON STANDARD GRADE SIZE LIMITS



LEGEND OF EARTH MATERIALS

- GRAVEL
- SAND
- SILT
- CLAY
- SANDY CLAY OR CLAYEY SAND
- SANDY SILT OR SILTY SAND
- SILTY CLAY OR CLAYEY SILT
- PEAT AND/OR ORGANIC MATTER
- FILL MATERIAL
- IGNEOUS ROCK
- SEDIMENTARY ROCK
- METAMORPHIC ROCK

LEGEND OF BORING OPERATIONS



NOTES

The contractor's attention is directed to Section 2, Article (c) of the Standard Specifications and to the Special Provisions accompanying this set of plans.
Classification of earth material as shown on this sheet is based upon field inspection and is not to be construed to imply mechanical analysis.

BROADWAY STREET BRIDGE

SUNSET BEACH

LOG OF TEST BORINGS

SCALE 1" = 6" BRIDGE AN-2 FILE DRAWING SHEET 7 OF 7 SHEETS

AN-2

AN-2