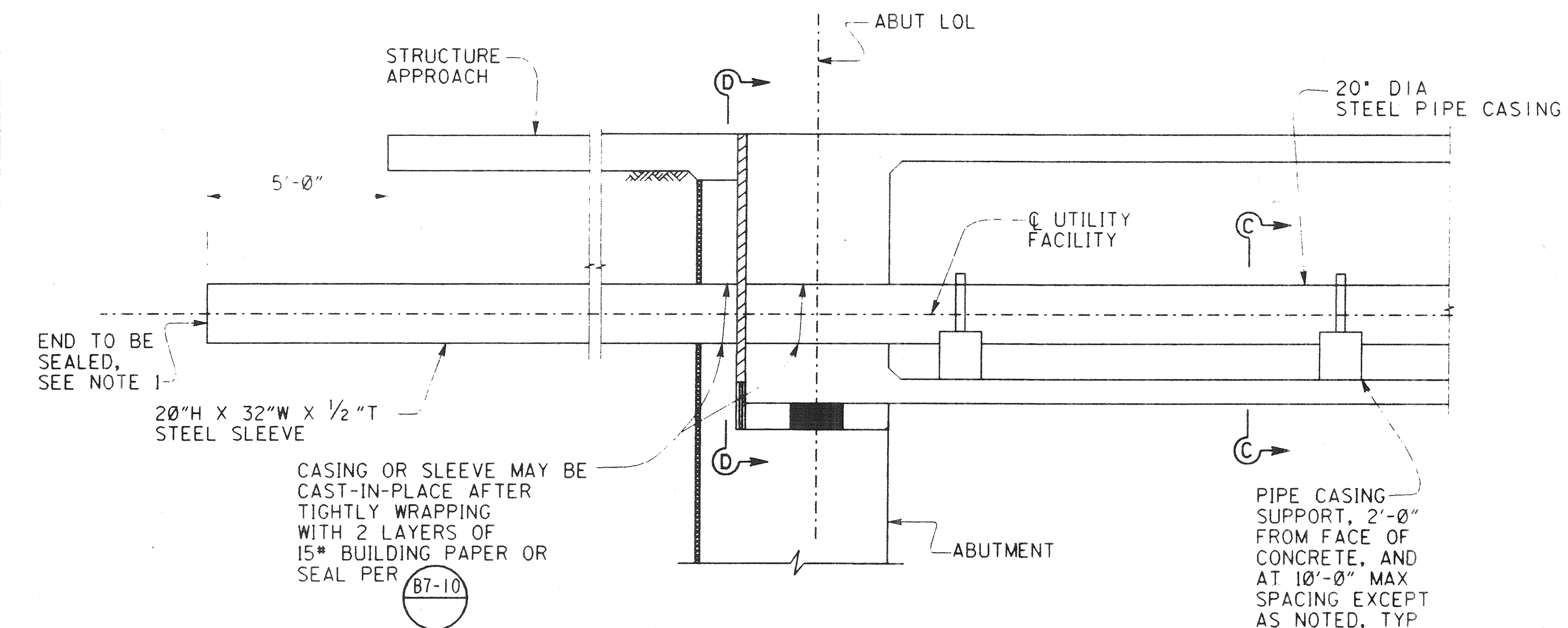


TYPICAL SECTION - 16' FACILITY

3/8" = 1'-0"

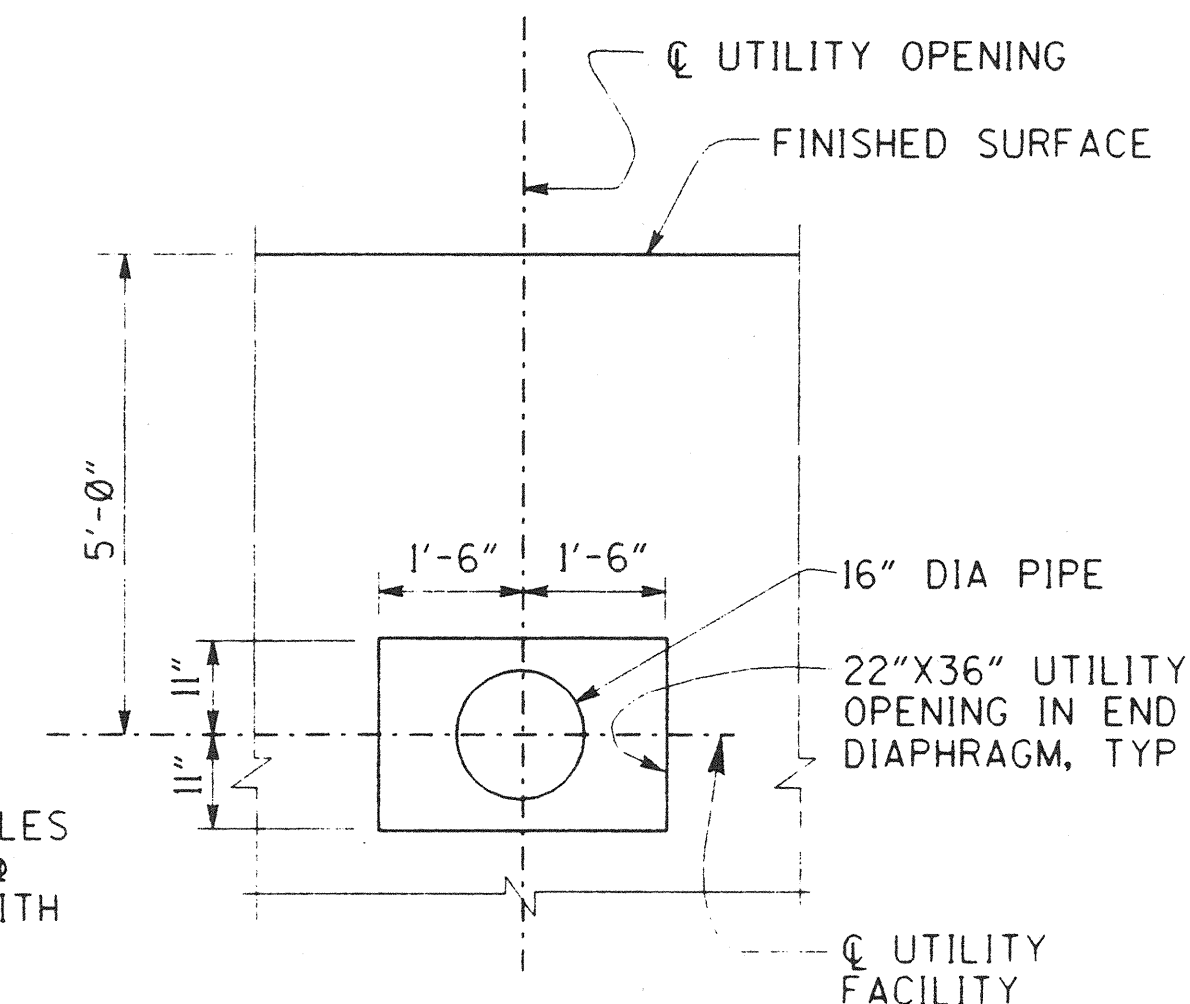


TYPICAL SECTION - FUTURE 8' FACILITY

3/8" = 1'-0"

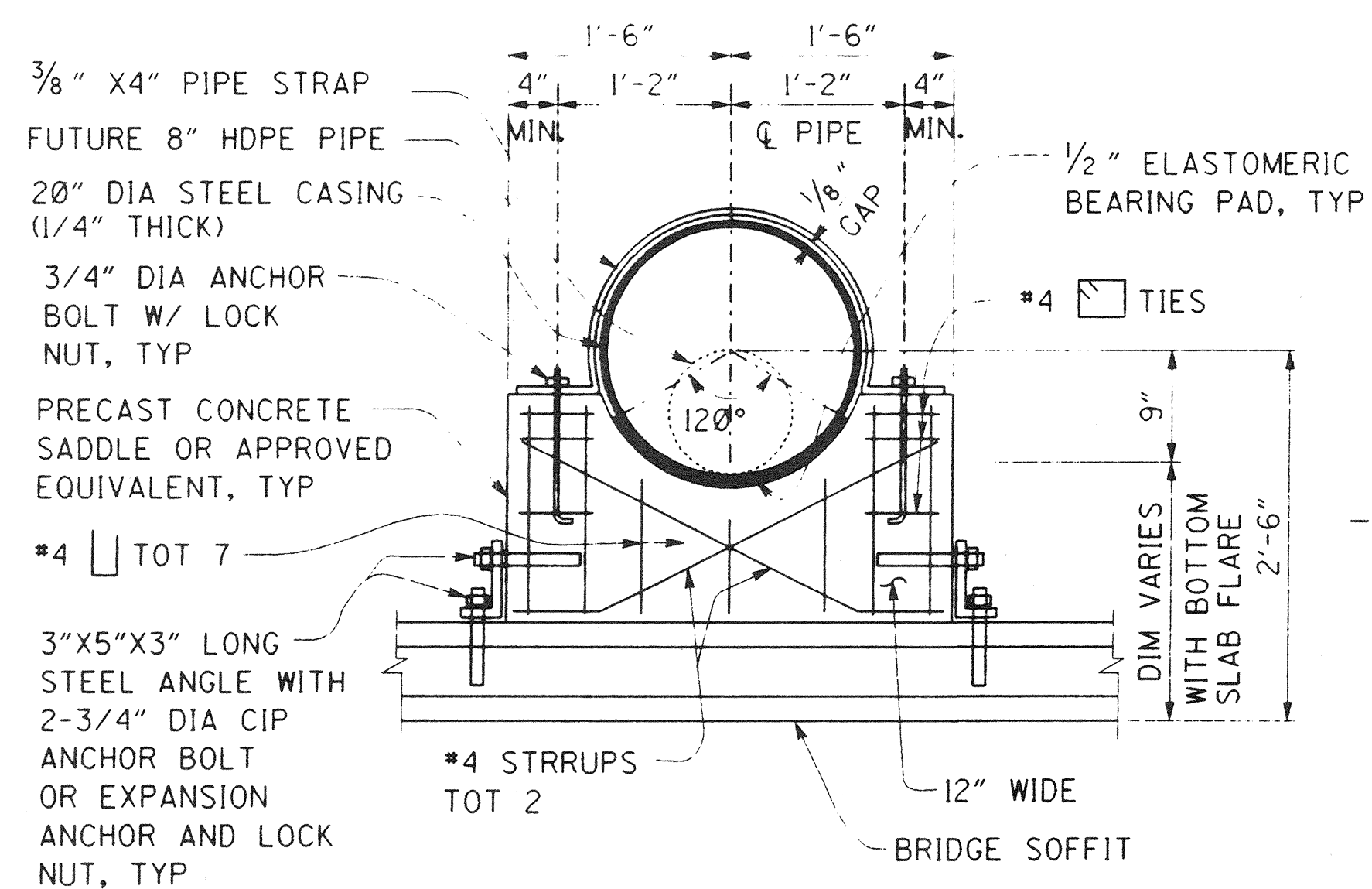
NOTES:

1. SEAL END OF CASING WITH A METHOD ACCEPTABLE TO THE ENGINEER.
2. THE CONTRACTOR SHALL VERIFY ALL CONTROLLING FIELD DIMENSIONS BEFORE ORDERING OR FABRICATING ANY MATERIALS.
3. PIPE STRAPS SHALL NOT BE TIGHTENED UNTIL THE BRIDGE HAS BEEN POST-TENSIONED.
4. PROVIDE 2" FLANGED GATE VALVE (KEY OPER.) AT ABUTMENT 1, AND 2" AIR RELEASE AND VACUUM VALVE AT ABUTMENT 6.
5. SEE SMWD STANDARD DRAWING W24 FOR WELDED PIPE JOINT DETAILS. CLOSURE WELDS IN PIPE JOINTS WITHIN THE BRIDGE AT CENTER SPAN, BENT, AND ABUTMENT LOCATIONS ARE TO BE MADE AFTER THE BRIDGE DECK IS PLACED, POST-TENSIONING COMPLETED, AND FALSEWORK REMOVED. CLOSURE WELDS AT THE END OF EACH SPAN SHOULD BE AT THE FIRST JOINT WITHIN THE SPAN. THERE SHALL NOT BE ANY PIPE JOINTS WITHIN 2 PIPE DIAMETERS OF THE CENTERLINE OF ANY BENT OR ABUTMENT, EXCEPT AS NOTED.
6. CONTRACTOR SHALL REMOVE ALL FALSEWORK FROM CELLS HOUSING SMWD FACILITIES.



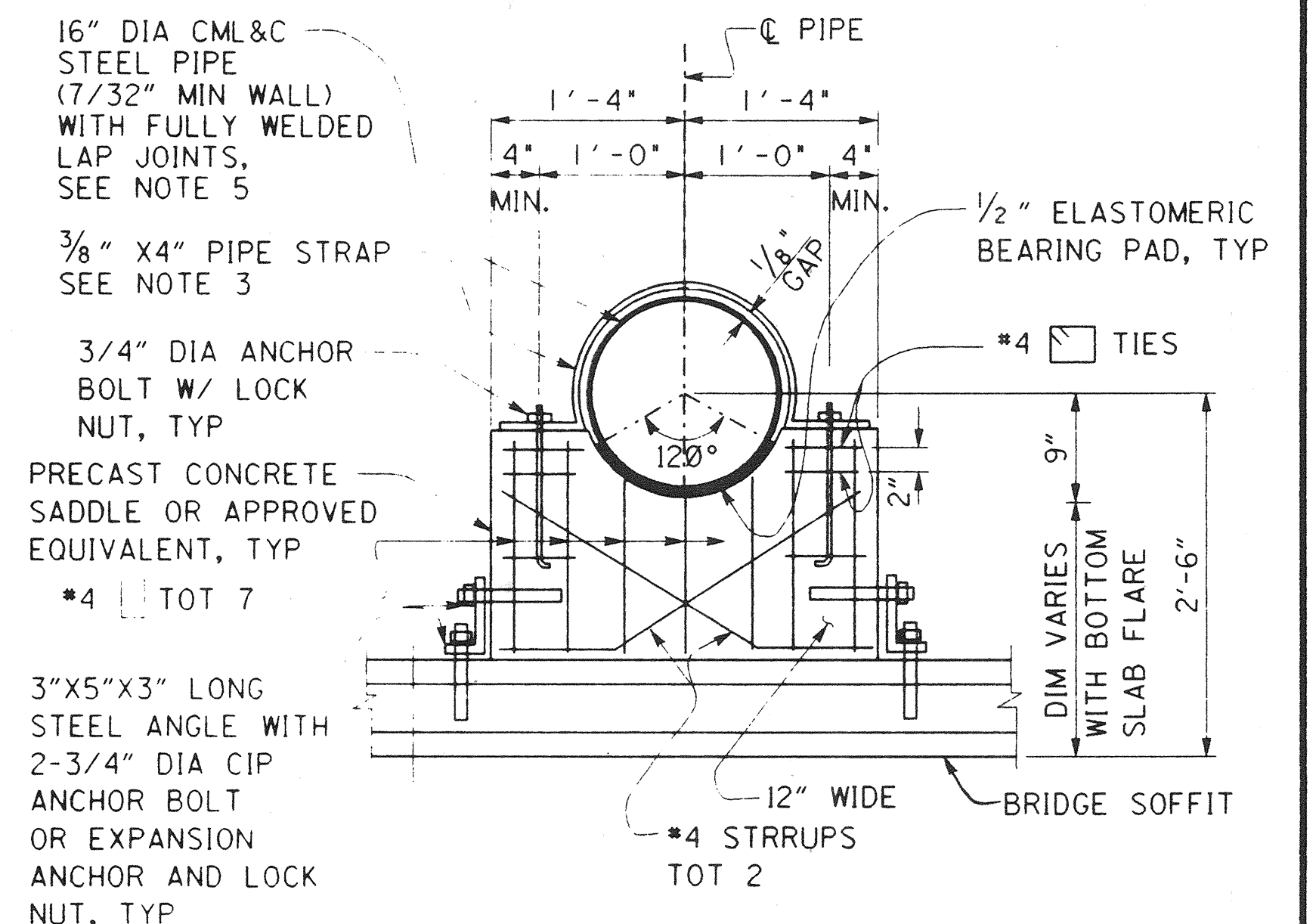
SECTION A-A

NO SCALE



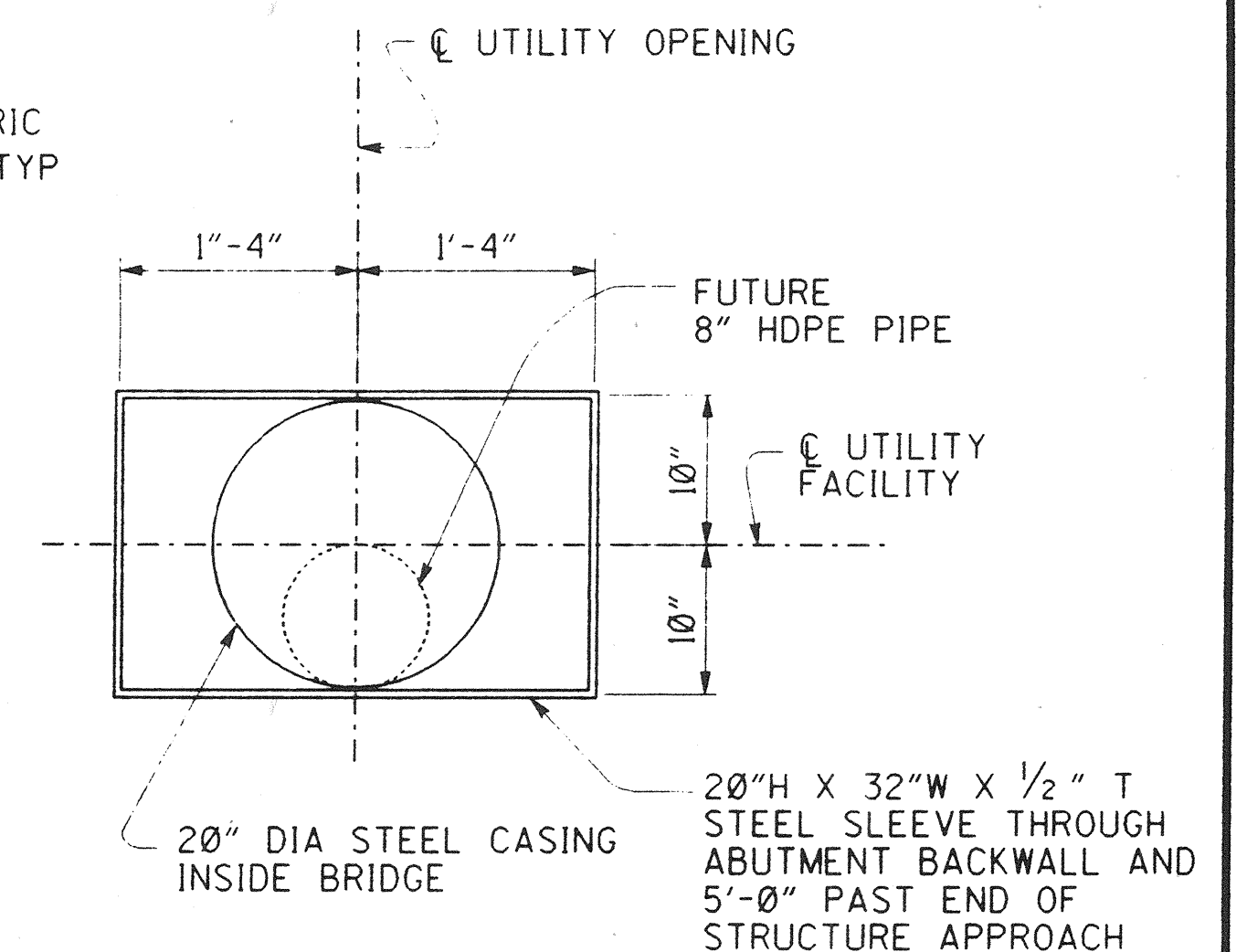
SECTION C-C

1" = 1'-0"



SECTION B-B

1" = 1'-0"



SECTION D-D

1" = 1'-0"

DR. 3 (16158)
Sheet 73 of 126

1/2 0 1 2
3 inches on original drawing

RECORD DRAWING

RECOMMENDED FOR APPROVAL - SMWD	
DISTRICT ENGINEER	<i>Richard A. Hart</i>
RCE 39595 (EXP. 12/31/17)	
PLANS PREPARED BY:	
HNTB	36 EXECUTIVE PARK SUITE 200 IRVINE, CALIFORNIA 92614

MARK	DATE	DESCRIPTION
REVISIONS		
PREPARED UNDER RESPONSIBLE CHARGE OF:		
<i>Richard A. Hart</i>		
NO. C 039595		
EXP. 12-31-97		
CIVIL		
RICHARD A. HART	DATE	
RCE 39595 (EXP. 12-31-97)		

ORANGE COUNTY ENVIRONMENTAL MANAGEMENT AGENCY	
ANTONIO PARKWAY BRIDGE OVER SAN JUAN CREEK	
SMWD UTILITY DETAILS	
DESIGNED <i>Steve A. Whitaker</i>	SHEET 25/27
DRAWN <i>WWL/SAW</i>	CHECKED <i>R. Hart</i>
SCALE AS SHOWN	DRAWING NO. 73
	OF 126

DR. 3 (16158)