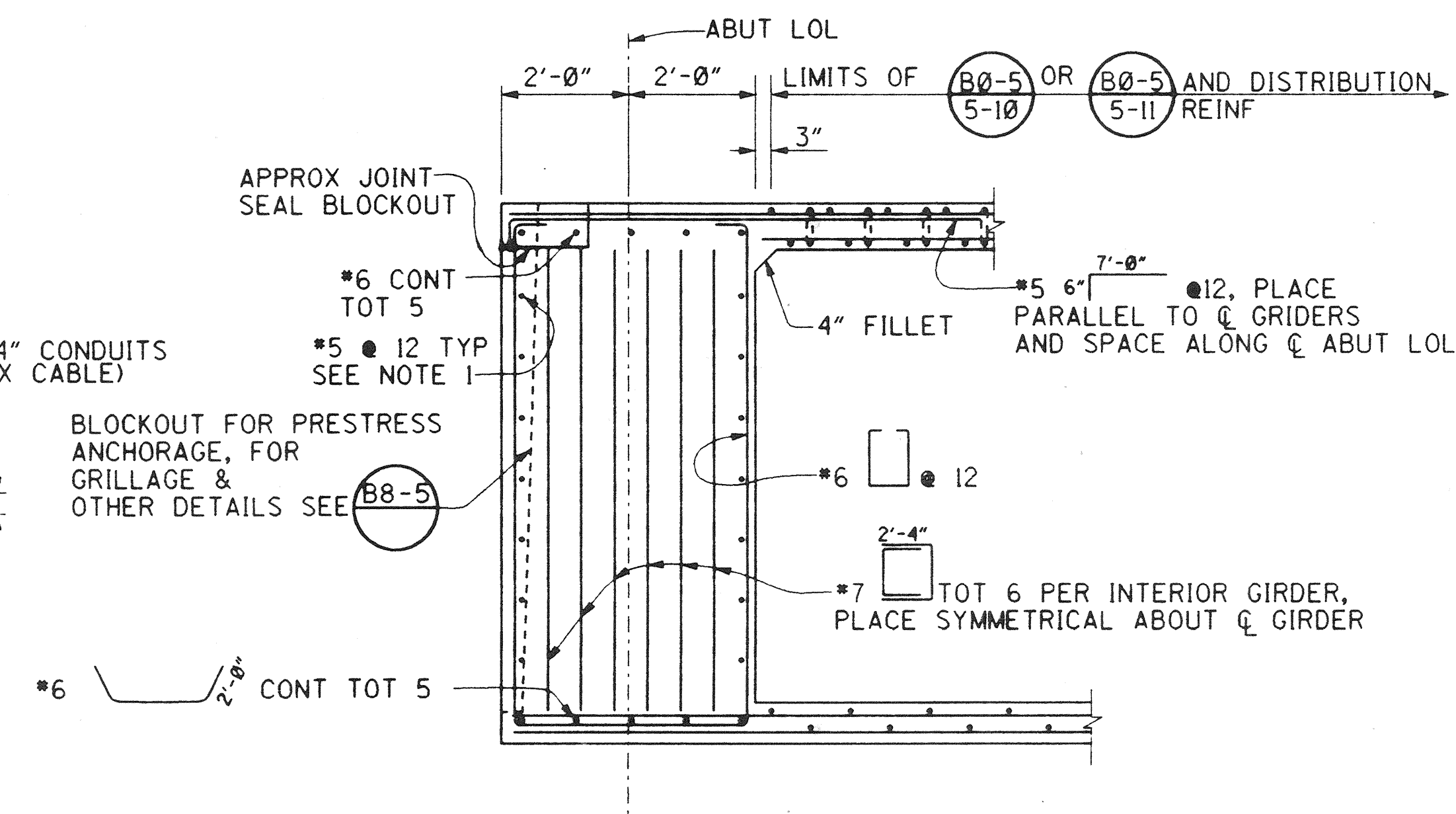
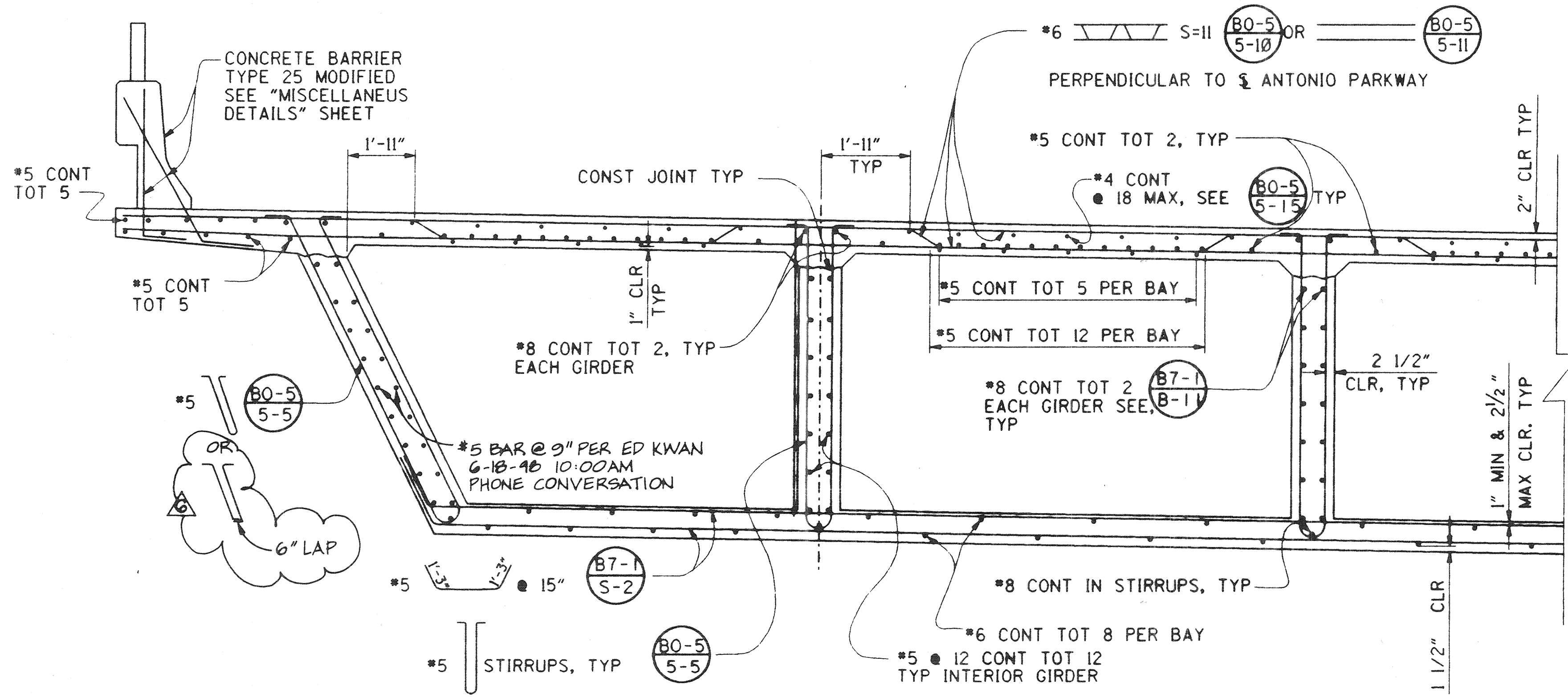


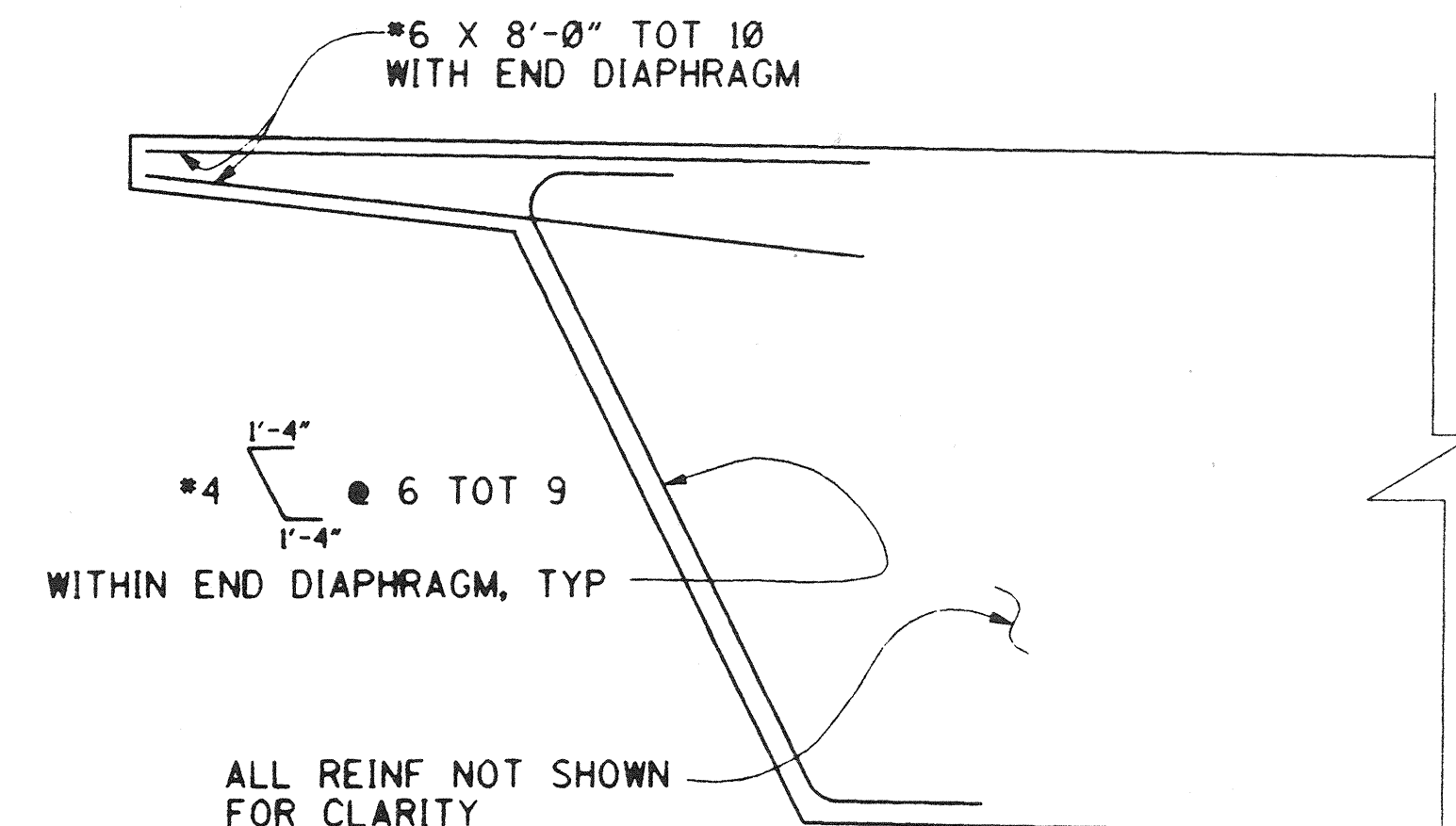
**TYPICAL SECTION**  
1/4" = 1'-0"



**END DIAPHRAGM** (B8-5)  
1/2" = 1'-0"



**PART TYPICAL SECTION**  
1/2" = 1'-0"



**END DIAPHRAGM FACIA**  
1/2" = 1'-0"

**NOTES:**  
1. TRANSVERSE DIAPHRAGM REINFORCEMENT CONFLICTING WITH UTILITY OPENING LOCATIONS CAN BE CUT.

DR. 3 (16158)  
Sheet 64 OF 126

ORANGE COUNTY ENVIRONMENTAL MANAGEMENT AGENCY		ANTONIO PARKWAY BRIDGE OVER SAN JUAN CREEK	
TYPICAL SECTION		16/27	
DESIGNED: Steve A. Whitaker		CHECKED: R. Hart	
DRAWN: L. West		DATE: 10/6/96	
SCALE: AS SHOWN		DRAWING NO. 64 OF 126	

REVISIONS

MARK	DATE	DESCRIPTION
10/99	AS BUILT SHOWN	

PREPARED UNDER RESPONSIBLE CHARGE OF:

Richard A. Hart

NO. C.03888

EXP. 12-31-97

DATE: 10/6/96

RECEIVED: 10/6/96

PLANS PREPARED BY:

**HNTB**

24 EXECUTIVE PARK SUITE 200 IRVINE, CALIFORNIA 92614

DR 3 (16158)