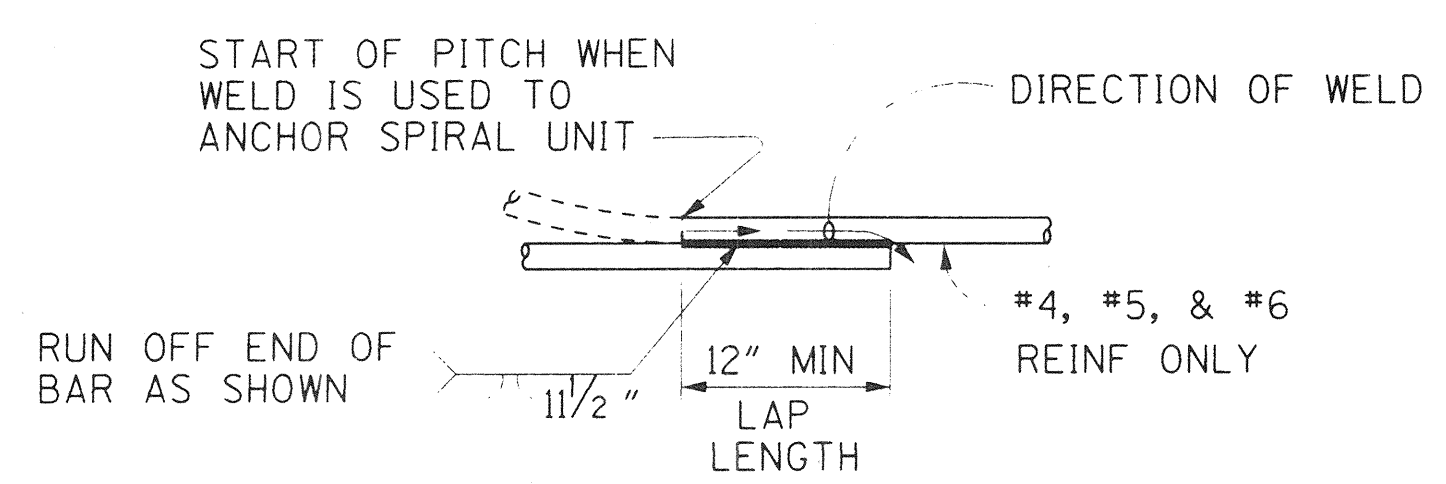


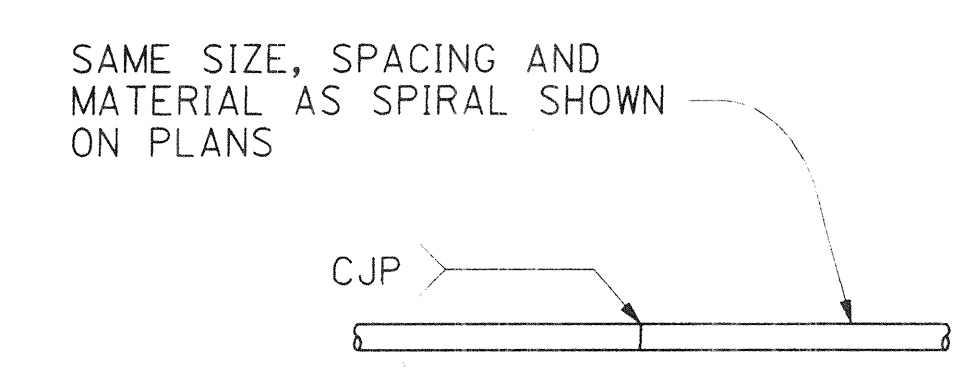
1. BUTT WELD TO BE MADE FIRST.
2. BUTT WELD TO BE MADE IN FLAT OR HORIZ POSITION.
3. LAP BAR TO BE CENTERED ON SPLICE.
4. FLARE WELD TO BE MADE IN DIRECTION SHOWN.
5. LAP BAR EQUAL SIZE TO SPIRAL BAR.

**VEE GROOVE WELDED SPLICE**



**NOTE:**  
FLARE WELD TO BE MADE IN DIRECTION SHOWN

**WELDED LAP SPLICE AND ANCHOR**

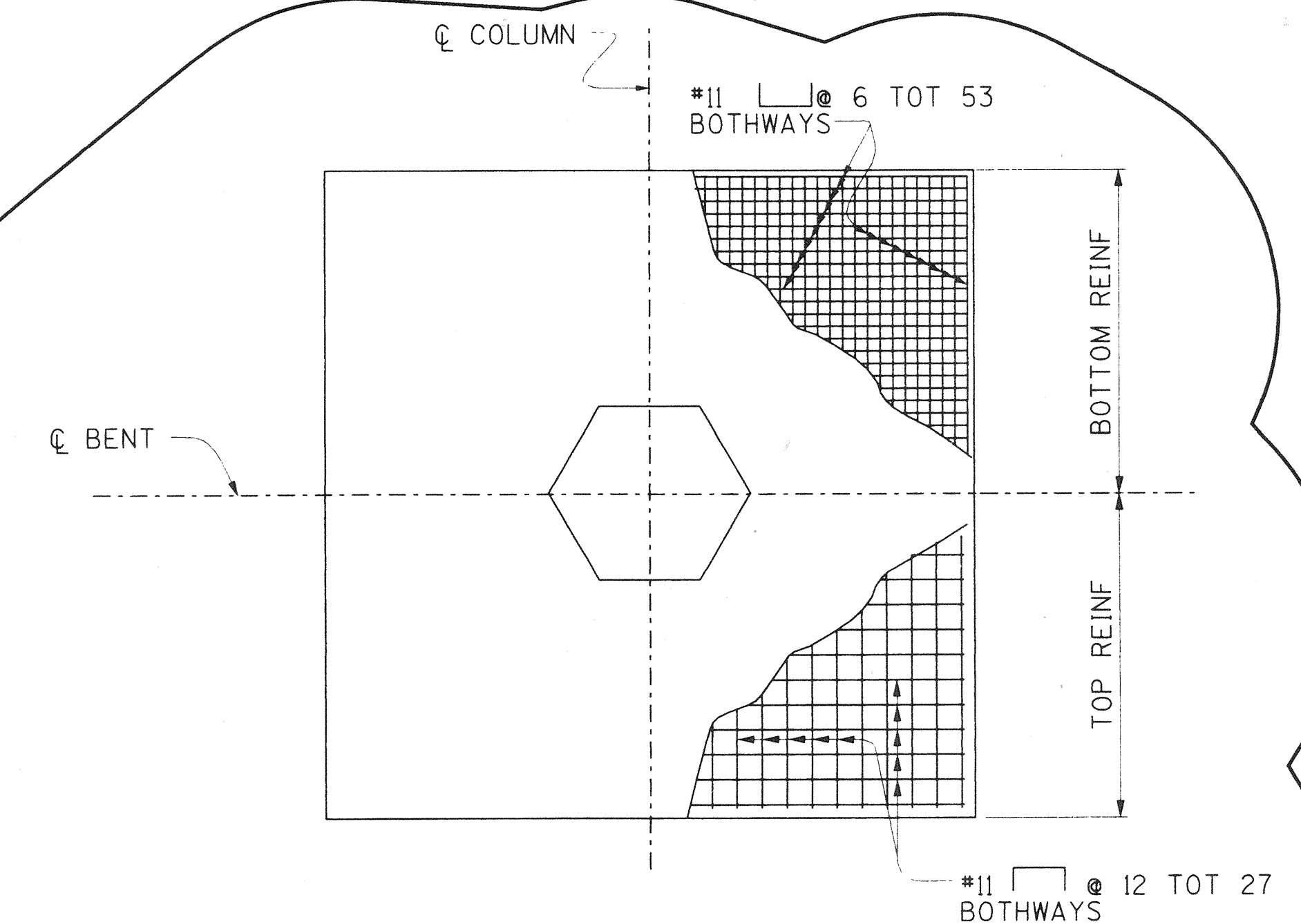


INDIVIDUAL HOOPS, MADE CONTINUOUS WITH 100% PENETRATION WELDS, MAY BE SUBSTITUTED FOR SPIRALS.

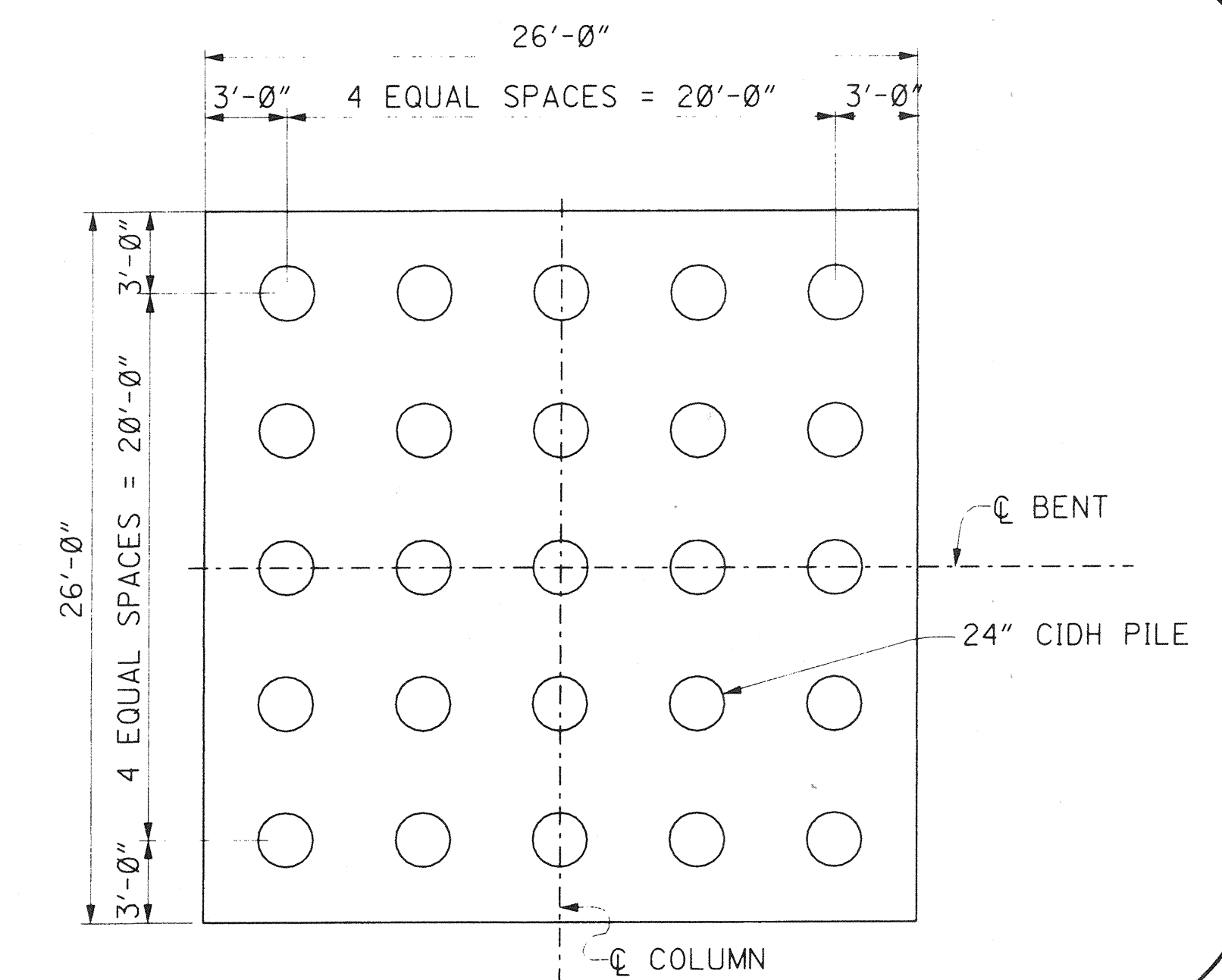
**BUTT WELDED CONTINUOUS HOOP**

**BAR SPIRAL SPLICE & SPIRAL ANCHOR AND HOOP DETAIL**

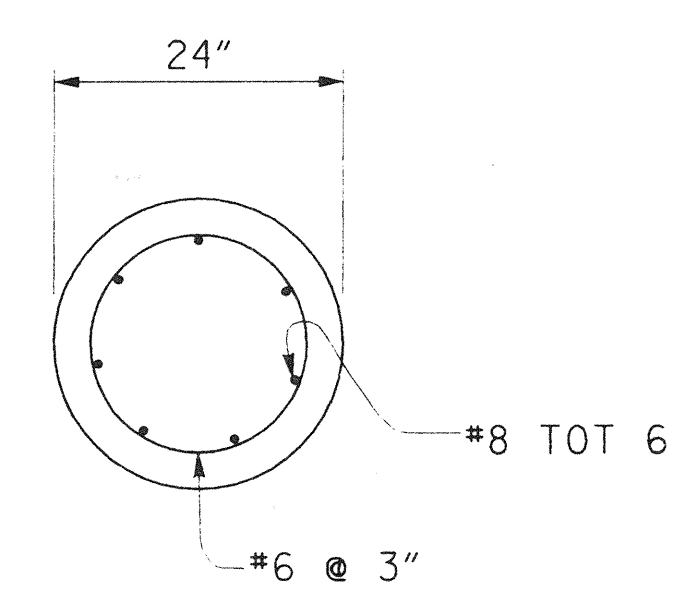
NO SCALE



**BENTS 2 FOOTING REINFORCEMENT**



**BENTS 2 PILE LAYOUT**



**24\"/>**

NTS  
PILE LENGTH = 29.0'

PLANS PREPARED BY:  
**HNTB**  
36 EXECUTIVE PARK  
SUITE 200  
IRVINE, CALIFORNIA 92614

ORANGE COUNTY ENVIRONMENTAL MANAGEMENT AGENCY		ANTONIO PARKWAY BRIDGE OVER SAN JUAN CREEK	
BENT DETAILS NO.4		DR. -3 (16158) Sheet 63 of 126	
DESIGNED: Steve A. Whitaker		SHEET 63 OF 126	
DRAWN: L. West		CHECKED: R. Hart	
SCALE: AS SHOWN		DATE: 10/24/97	

DR.-3 (16158)