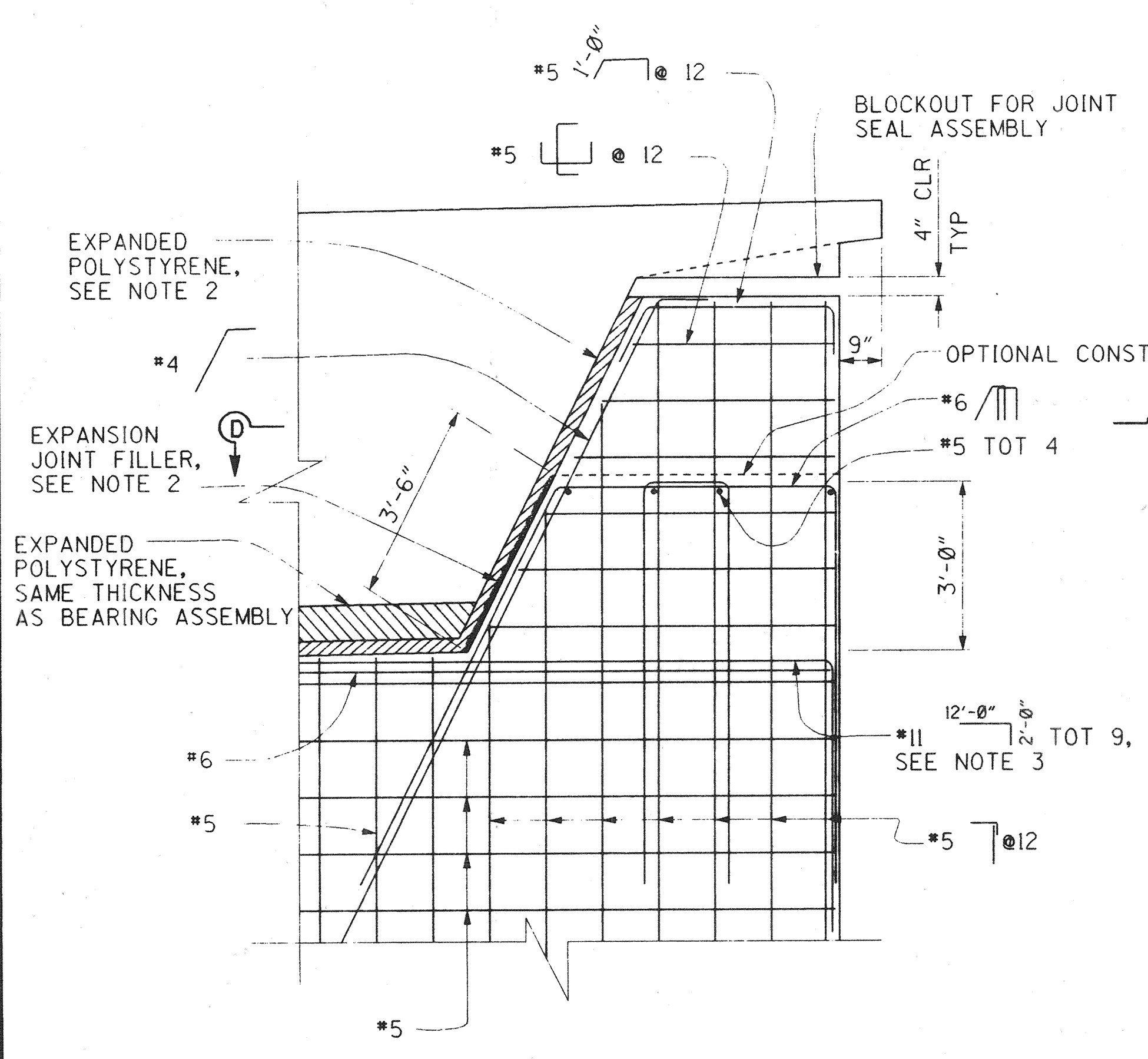
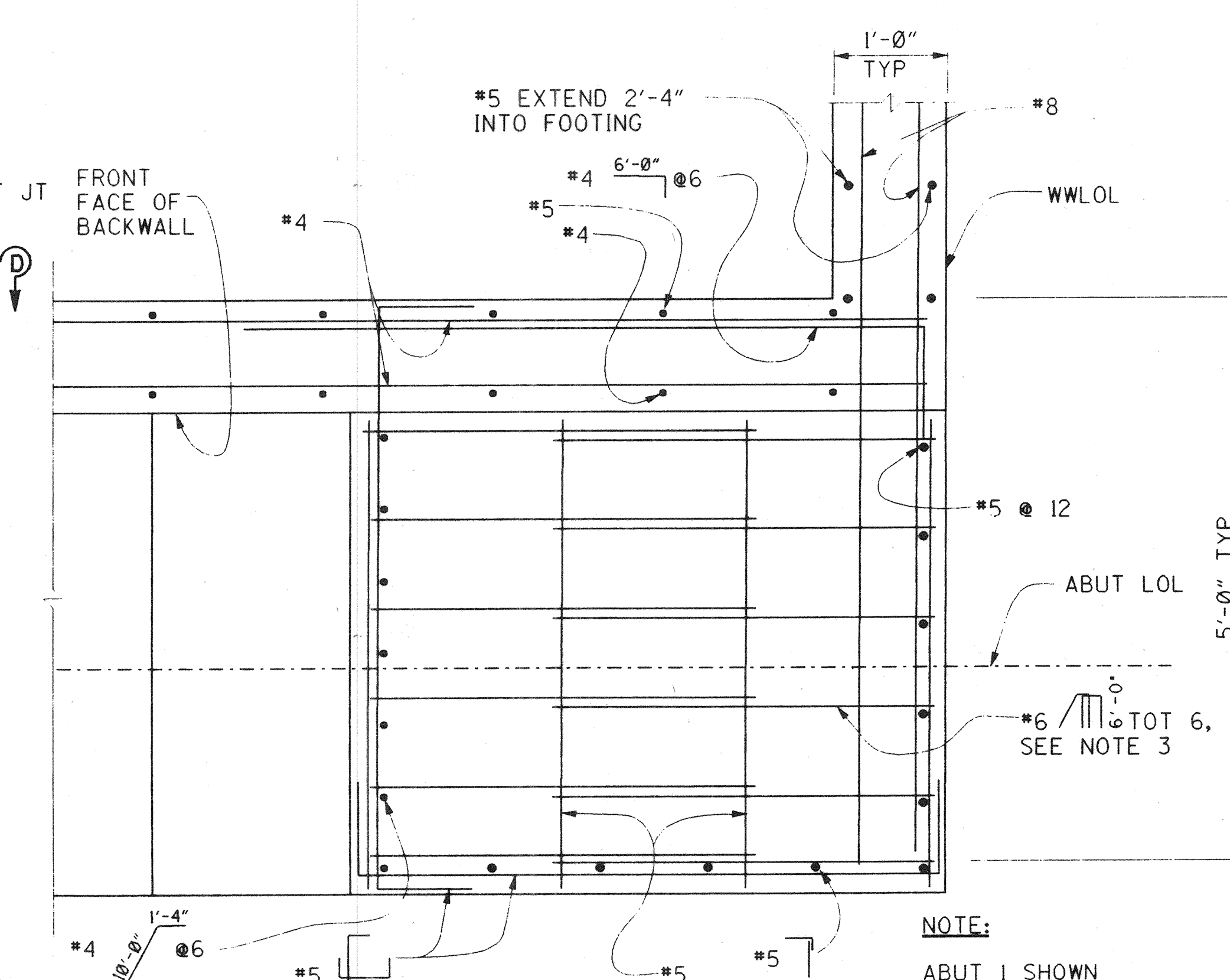


WINGWALL ELEVATION

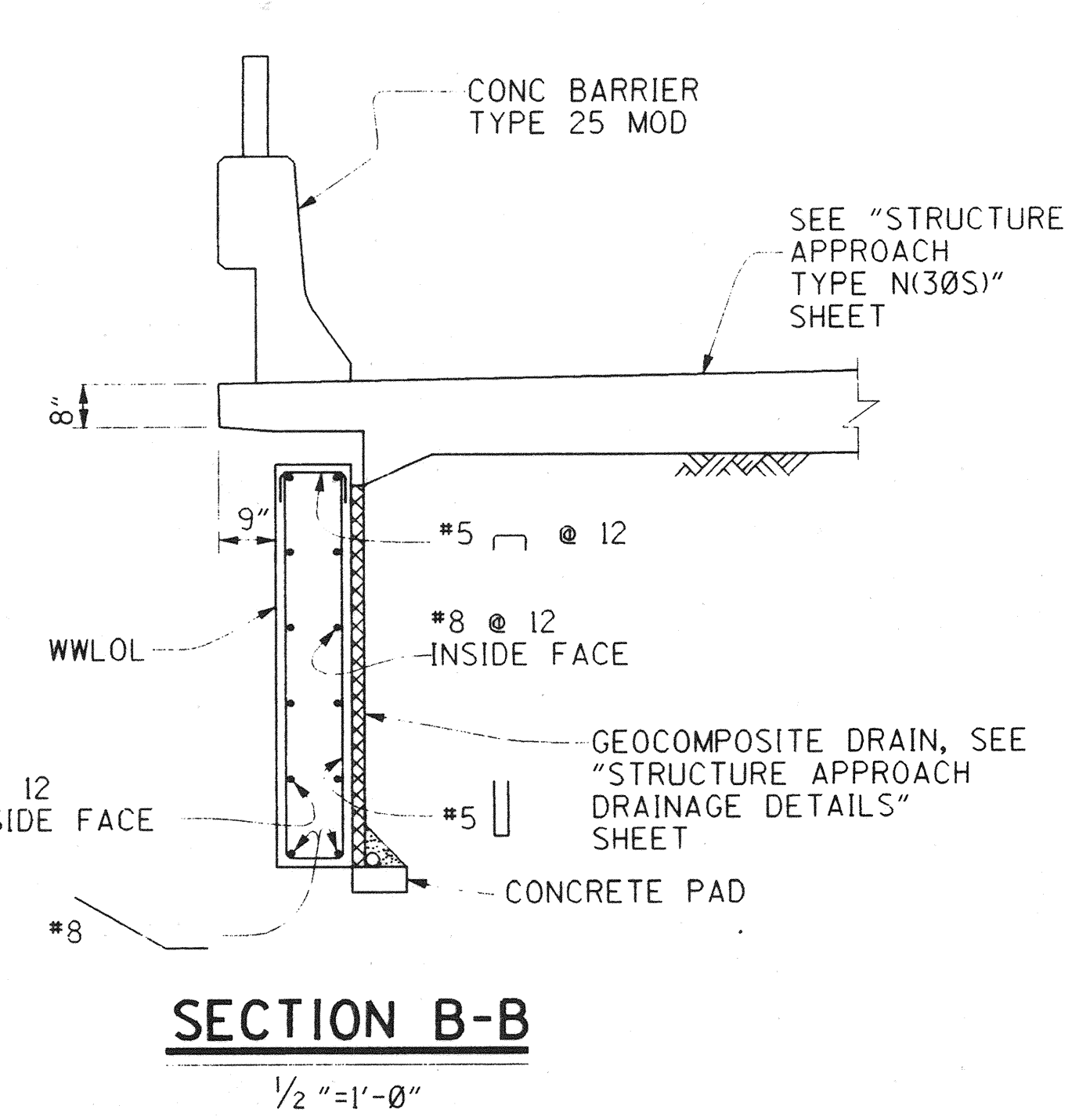


PART ELEVATION

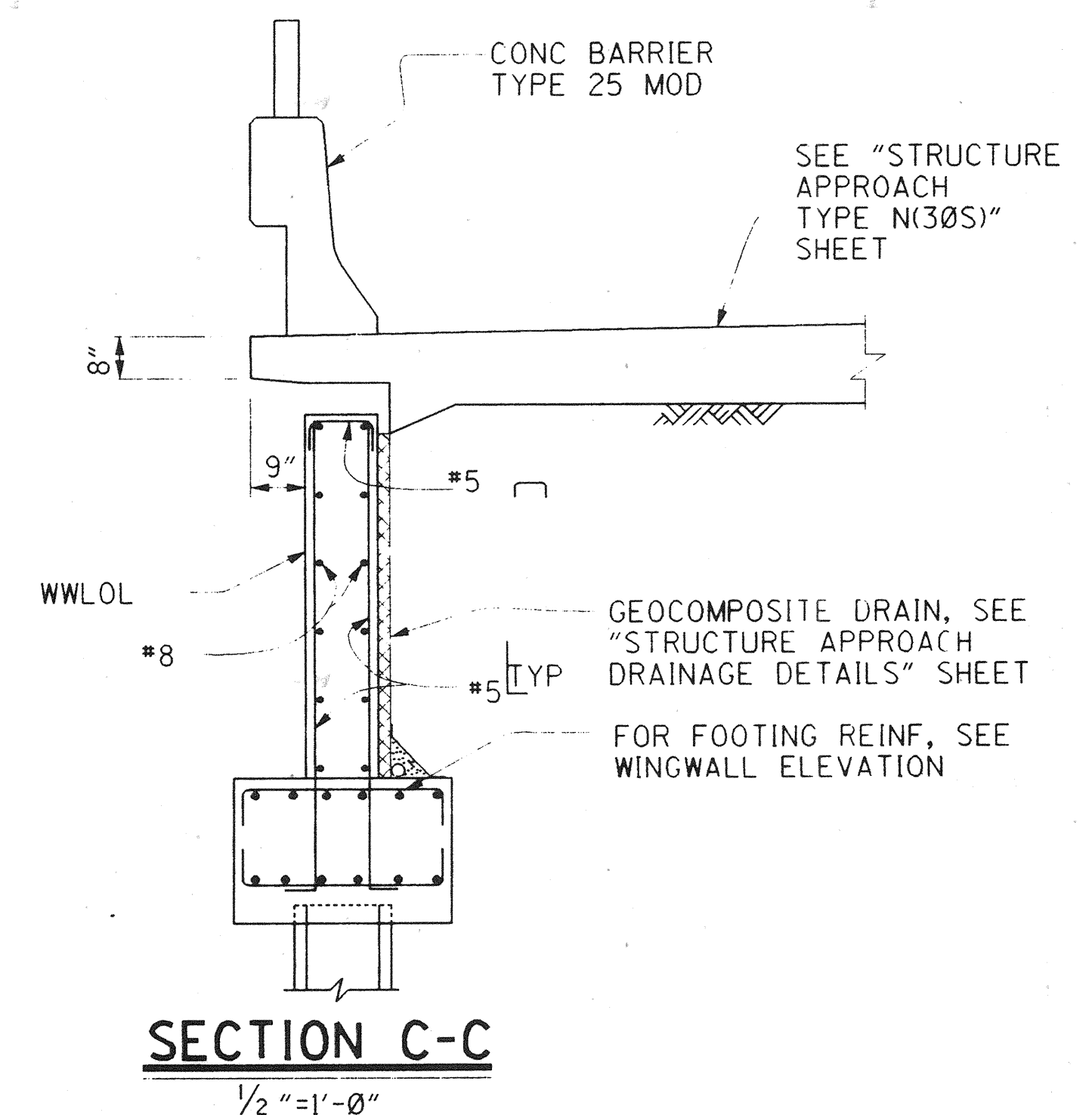


SECTION D-D

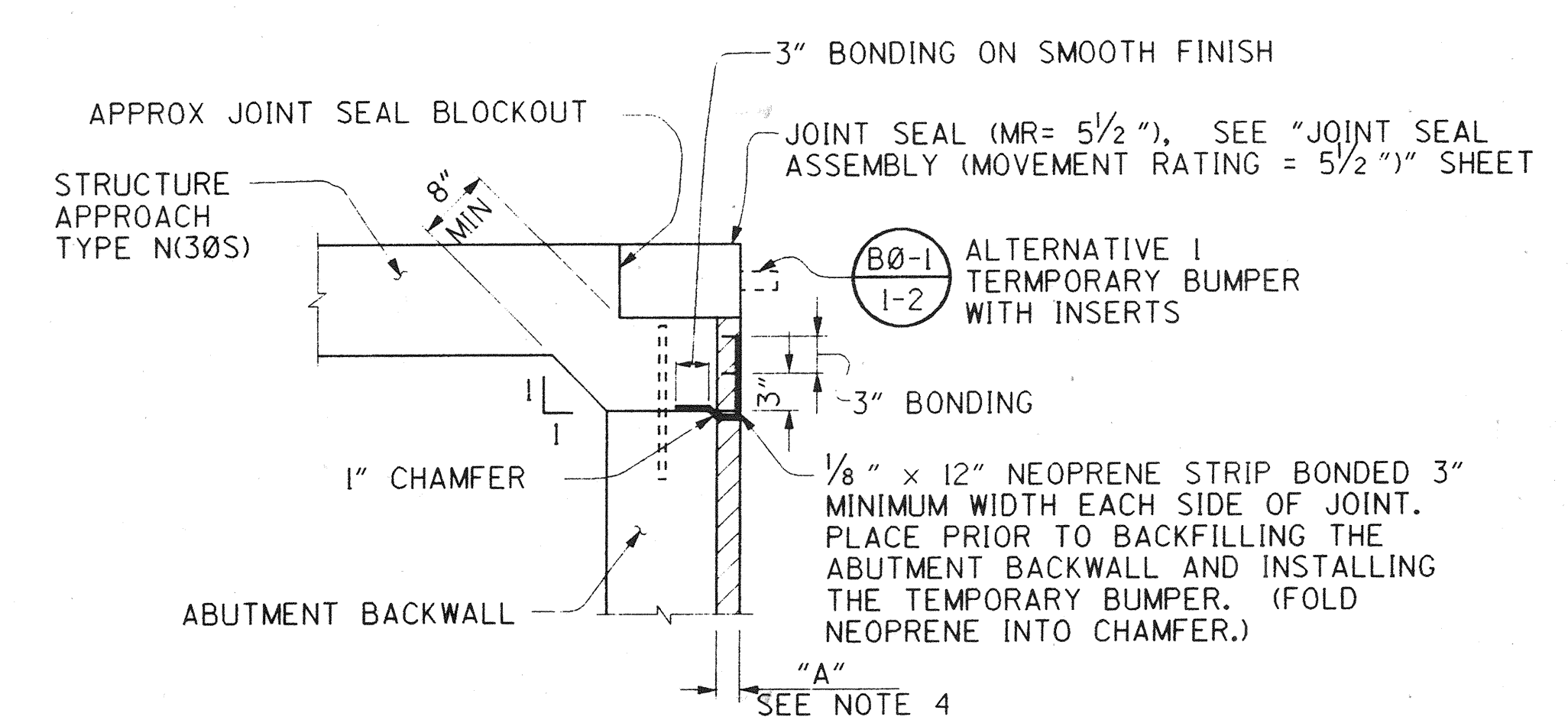
EXTERNAL SHEAR KEY



SECTION B-B



SECTION C-C



DETAIL A

NOTES:

- FOR DETAILS NOT SHOWN SEE "ABUTMENT DETAILS NO. 1, 2, & 4" SHEETS.
- 3" EXPANDED POLYSTYRENE INCLUDING 1/2" EXPANSION JOINT FILLER.
- BEGIN SPACING REINFORCEMENT AT THE FRONT FACE OF THE BACKWALL.
- USE DIMENSION "A" SHOWN ON "JOINT SEAL ASSEMBLY" SHEET FOR EXPANSION JOINT THICKNESS.

DR. 3 (16158)
Sheet 58 OF 126

1/2" = 3 inches on original drawing

ORANGE COUNTY ENVIRONMENTAL MANAGEMENT AGENCY	
ANTONIO PARKWAY BRIDGE OVER SAN JUAN CREEK	
ABUTMENT DETAILS NO. 3	
DESIGNED <i>Steve A. Whitaker</i>	10/27
DRAWN <i>L. West</i>	CHECKED <i>R. Hart</i>
SCALE AS SHOWN	DATE
SHEET 58 OF 126	

PLANS PREPARED BY:
HNTB
36 EXECUTIVE PARK
SUITE 200
IRVINE, CALIFORNIA 92614

PROFESSIONAL
SEAL
RICHARD A. HART
NO. C 039595
EXP. 12-31-97
CIVIL
STATE OF CALIFORNIA
4/20/96

DR 3 (16158)