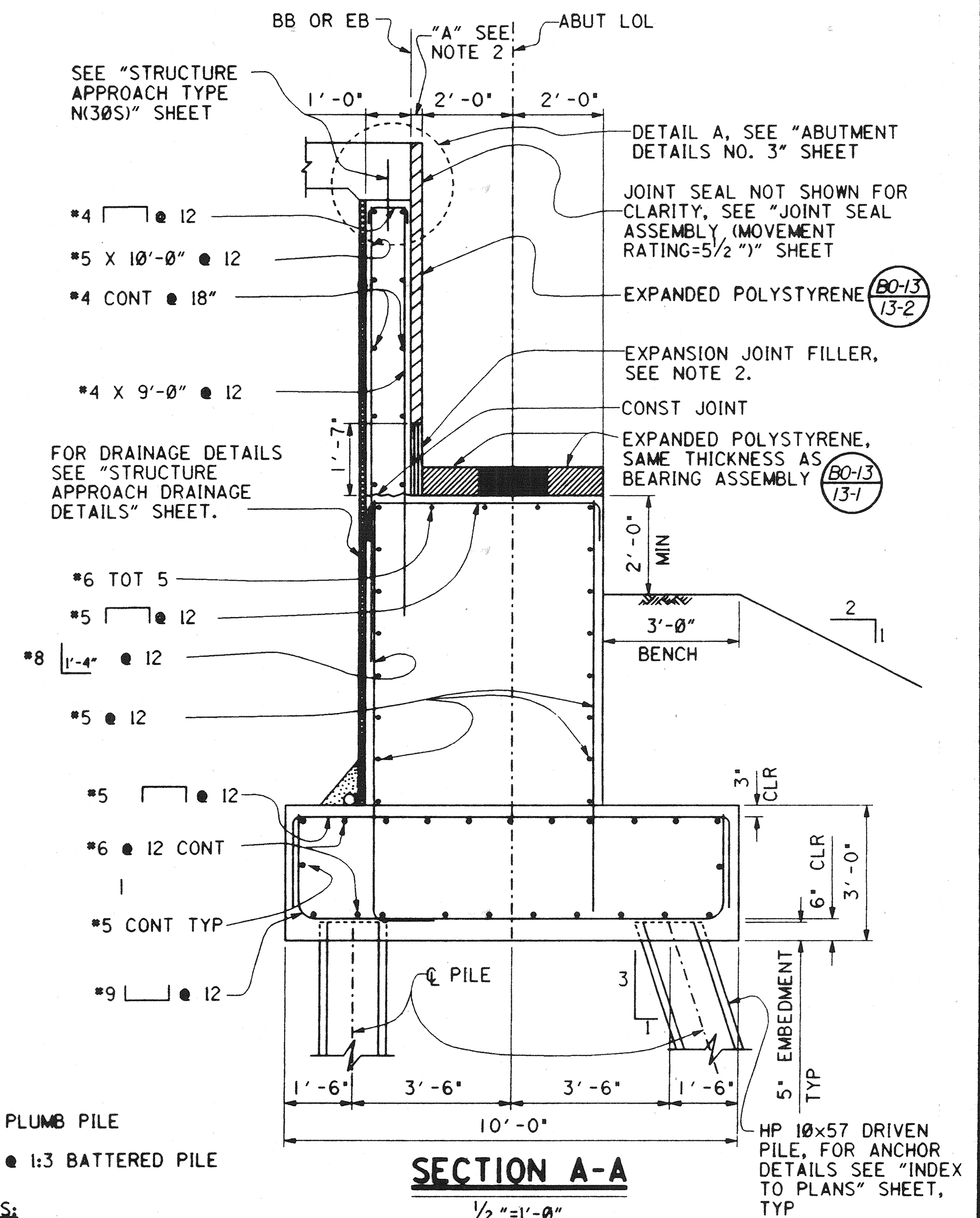
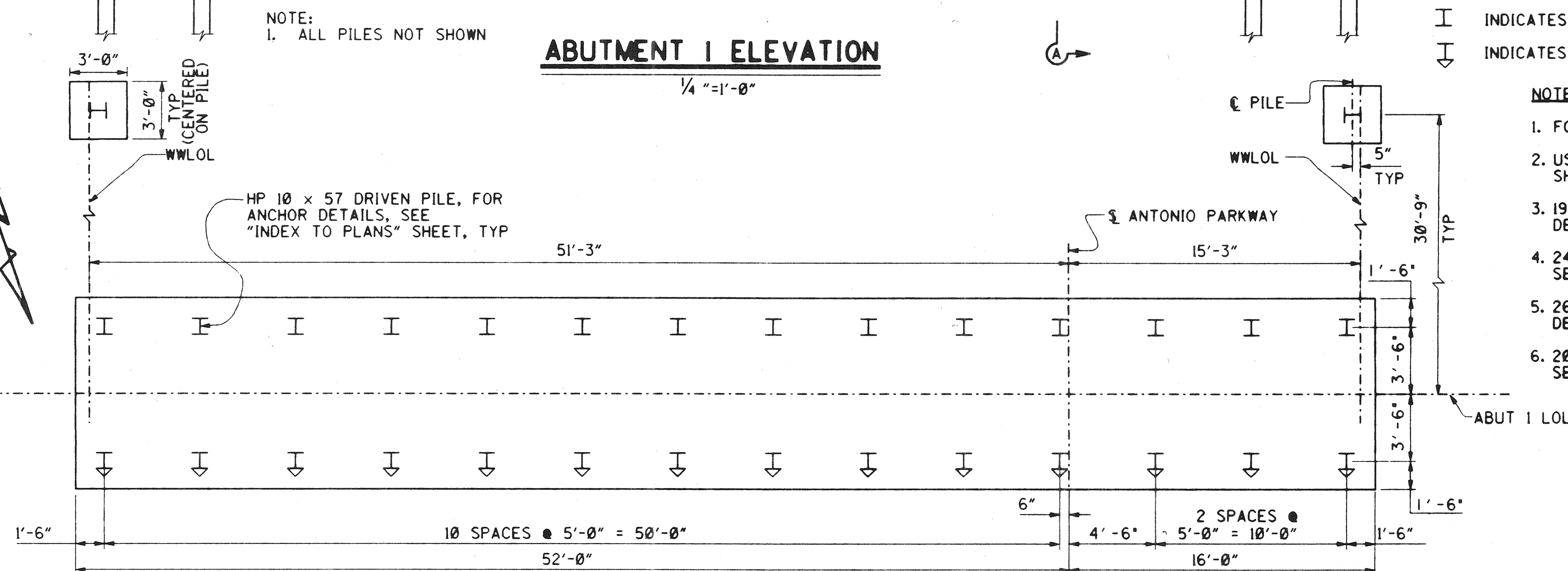
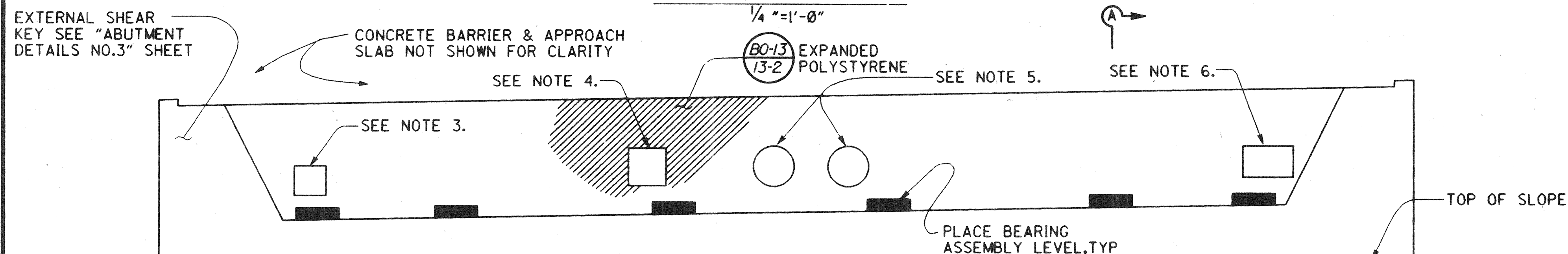
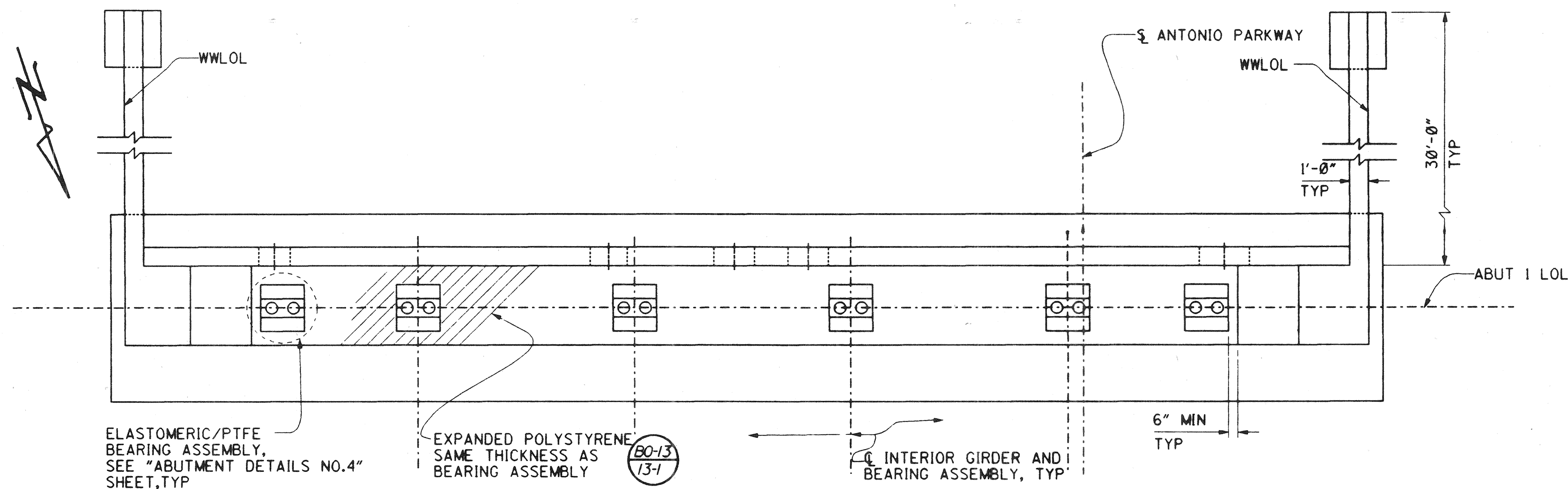


Design Filename: p:\24897\cadd\antioch.dgn
Plotted on: 08-01-1996 08:44
Generated by: S Whitaker



NOTES:

- FOR DETAILS NOT SHOWN SEE "ABUTMENT DETAILS NO. 2, 3, 4" SHEETS.
- USE DIMENSION "A" SHOWN ON "JOINT SEAL ASSEMBLY (MOVEMENT RATING = 5/2") SHEET FOR EXPANSION JOINT THICKNESS.
- 19"Hx20"W UTILITY OPENING IN ABUTMENT BACKWALL (SDG&E). FOR LOCATION & DETAILS, SEE "TYPICAL SECTION" SHEET. STEEL CASING NOT REQUIRED UNDER APPROACH SLAB.
- 24"Hx24"W UTILITY OPENING (PAC BELL). FOR LOCATION & DETAILS, SEE "TYPICAL SECTION" SHEET. STEEL CASING NOT REQUIRED UNDER APPROACH SLAB.
- 26" DIA UTILITY OPENING IN ABUTMENT BACKWALL (SMWD). FOR LOCATION & DETAILS, SEE "TYPICAL SECTION" AND "SMWD UTILITY DETAILS" SHEETS.
- 20"Hx32"W UTILITY OPENING (SMWD). FOR LOCATION & DETAILS, SEE "TYPICAL SECTION" AND "SMWD UTILITY DETAILS" SHEETS.

RECORD DRAWING

1/2" = 1'-0"

3 inches on original drawing

PLANS PREPARED BY:

HNTB

36 EXECUTIVE PARK
SUITE 200
IRVINE, CALIFORNIA 92614

MARK		DATE	DESCRIPTION
REVISIONS			
PREPARED UNDER RESPONSIBLE CHARGE OF:			
DESIGNED: Steve A. Whitaker			
DRAWN: L. West			
CHECKED: R. Hart			
SCALE: AS SHOWN			
DATE: 8/27			
SHEET NO. 56			
DRAWING NO. OF 126			

ORANGE COUNTY ENVIRONMENTAL MANAGEMENT AGENCY
ANTONIO PARKWAY BRIDGE OVER SAN JUAN CREEK
ABUTMENT DETAILS NO. 1
DR. 3 (16158) Sheet 56 Of 126

Dr. 3 (16158)