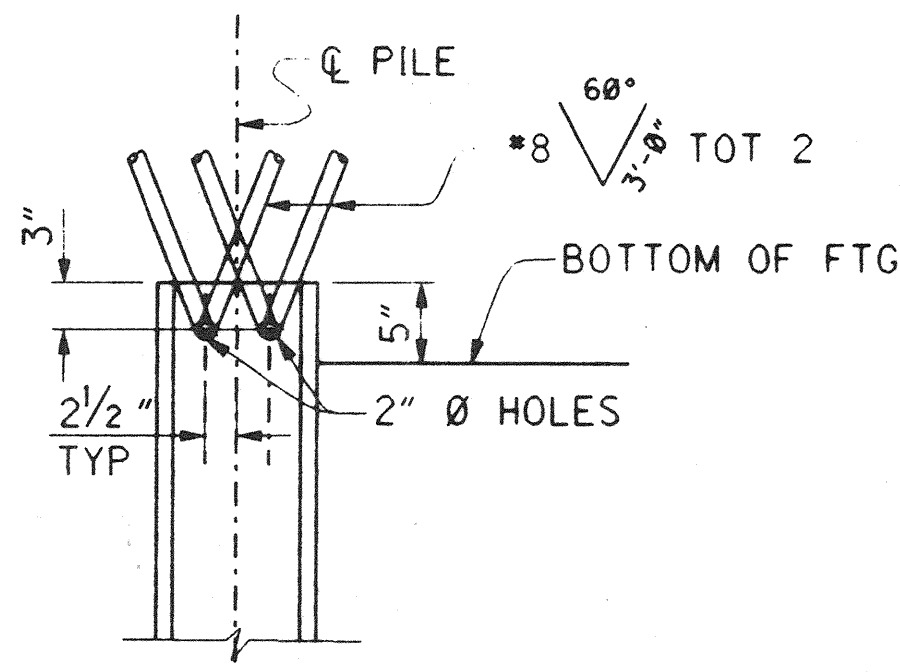
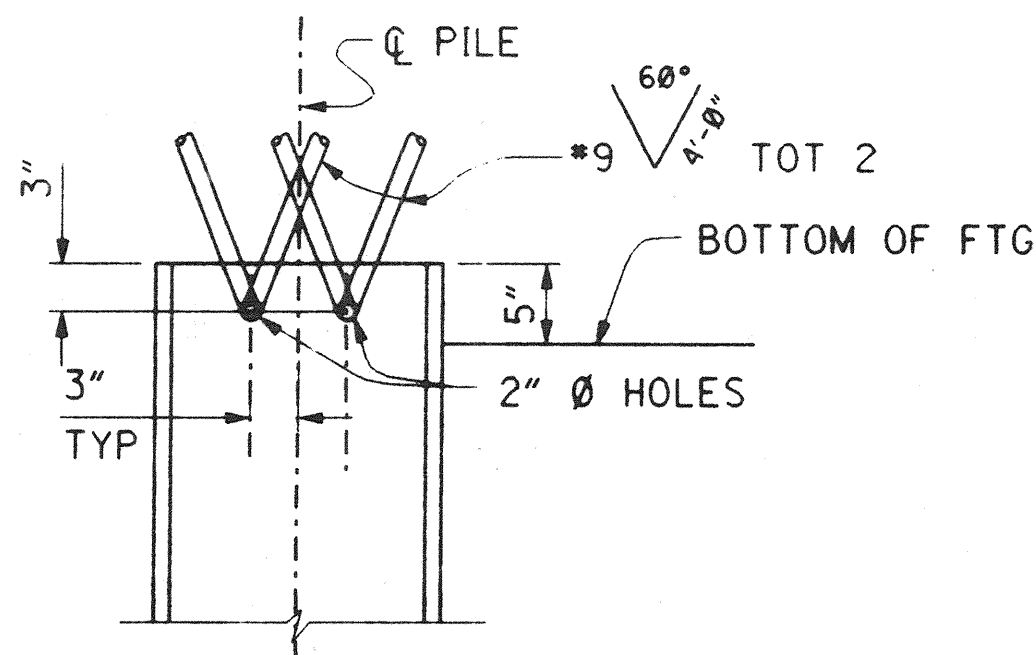


CALTRANS STANDARD PLANS DATED JULY 1992



HP 10X57 STEEL PILE ANCHOR

NO SCALE



HP 14X89 STEEL PILE ANCHOR

NO SCALE

A10A	ABBREVIATIONS
A10B	SYMBOLS
A62C	LIMITS OF PAYMENT FOR EXCAVATION AND BACKFILL-BRIDGE
A77A	METAL BEAM GUARD RAILING
A77B	METAL BEAM GUARD RAILING STANDARD HARDWARE
A77C	METAL BEAM GUARD RAILING POST AND BLOCKS
A77D	GUARD RAIL FLARES
B0-1	BRIDGE DETAILS
B0-5	BRIDGE DETAILS
B0-13	BRIDGE DETAILS
B7-1	BOX GIRDER DETAILS
B7-6	DECK DRAINS TYPES D-1 AND D-2
B7-10	UTILITY OPENING - BOX GIRDER
B7-11	UTILITY DETAILS
B8-5	CAST-IN-PLACE PRESTRESSED GIRDER DETAILS
B11-51	TUBULAR HAND RAILING
B11-53	CONCRETE BARRIER TYPE 25
ES-7A	SIGNAL, LIGHTING, AND ELECTRICAL SYSTEMS, ELECTRICAL DETAILS, STRUCTURE INSTALLATIONS
ES-7C	SIGNAL, LIGHTING, AND ELECTRICAL SYSTEMS, ELECTRICAL DETAILS, STRUCTURE INSTALLATIONS

GENERAL NOTES LOAD FACTOR DESIGN

DESIGN:	BRIDGE DESIGN SPECIFICATIONS (1992 AASHTO WITH INTERIMS AND REVISIONS BY CALTRANS)
DEAD LOAD:	INCLUDES 35 psf FOR FUTURE WEARING SURFACE
LIVE LOADING:	HS20-44 AND ALTERNATIVE AND PERMIT DESIGN LOAD.
SEISMIC LOADING:	PEAK ROCK ACCELERATION = 0.3g DEPTH OF ALLUVIUM = 10 TO 80 FEET DESIGN BASED ON CURRENT SPECIFICATION WITH DUCTILITY/RISK FACTOR Z= 6.0
REINFORCED CONCRETE:	f _y = 60,000 psi f' _c = 3,500 psi, UNLESS OTHERWISE NOTED n = 9 (SEE "CAMBER DIAGRAM AND CONCRETE STRENGTH & TYPE LIMITS" SHEET) TRANSVERSE DECK SLAB (WORKING STRESS DESIGN) f _s = 20,000 psi f' _c = 1,200 psi n = 10
PRESTRESSED CONCRETE:	SEE PRESTRESSING NOTES ON "GIRDER LAYOUT" SHEETS.

INDEX TO PLANS

SHEET NO.	TITLE
1	GENERAL PLAN
2	INDEX TO PLANS
3	STRUCTURE PLAN NO. 1
4	STRUCTURE PLAN NO. 2
5	DECK CONTOURS
6	FOUNDATION PLAN NO. 1
7	FOUNDATION PLAN NO. 2
8	ABUTMENT DETAILS NO. 1
9	ABUTMENT DETAILS NO. 2
10	ABUTMENT DETAILS NO. 3
11	ABUTMENT DETAILS NO. 4
12	BENT DETAILS NO. 1
13	BENT DETAILS NO. 2
14	BENT DETAILS NO. 3
15	BENT DETAILS NO. 4
16	TYPICAL SECTION
17	GIRDER LAYOUT NO. 1
18	GIRDER LAYOUT NO. 2
19	CAMBER DIAGRAM AND CONC STRENGTH & TYPE LIMITS
20	DECK DRAIN DETAILS
21	JOINT SEAL ASSEMBLY (MOVEMENT RATING = 5 1/2")
22	STRUCTURE APPROACH TYPE N (30S)
23	STRUCTURE APPROACH DRAINAGE DETAILS
24	EROSION PROTECTION PLAN
25	SMWD UTILITY DETAILS
26	MISCELLANEOUS DETAILS
27	LOG OF TEST BORINGS

RECORD DRAWING

DR. 3 (16158)
Sheet 50 Of 126

1/2" = 1'-0"
3 inches on original drawing

ORANGE COUNTY ENVIRONMENTAL MANAGEMENT AGENCY	
ANTONIO PARKWAY BRIDGE OVER SAN JUAN CREEK	
INDEX TO PLANS	
2/27	
DESIGNED: Steve A. Whitaker	
CHECKED: R. Hart	
SCALE	DATE
AS SHOWN	DRAWING NO.
50	OF 126

PLANS PREPARED BY:
HNTB
34 EXECUTIVE PARK
SUITE 300
IRVINE, CALIFORNIA 92614