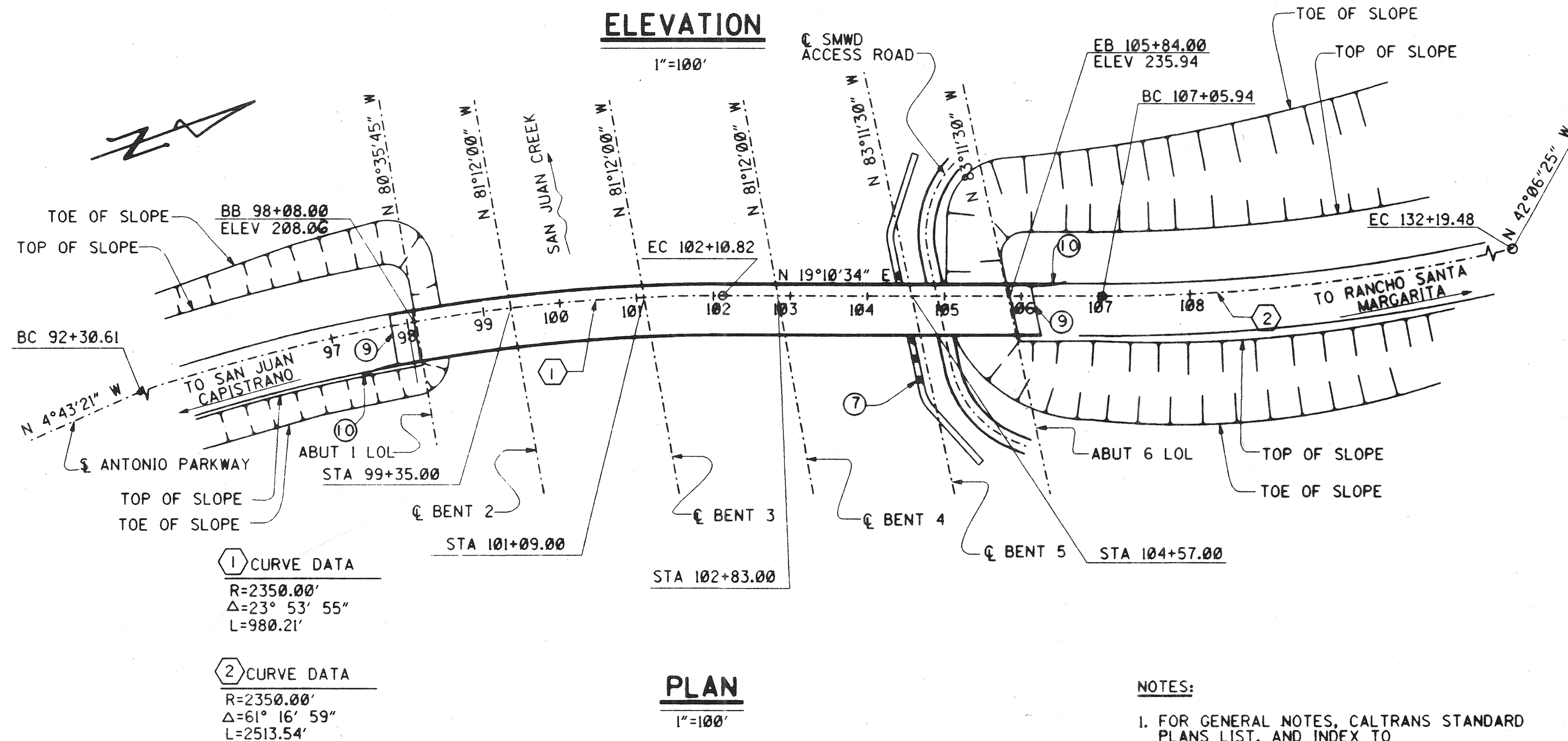


PROFILE GRADE
NO SCALE

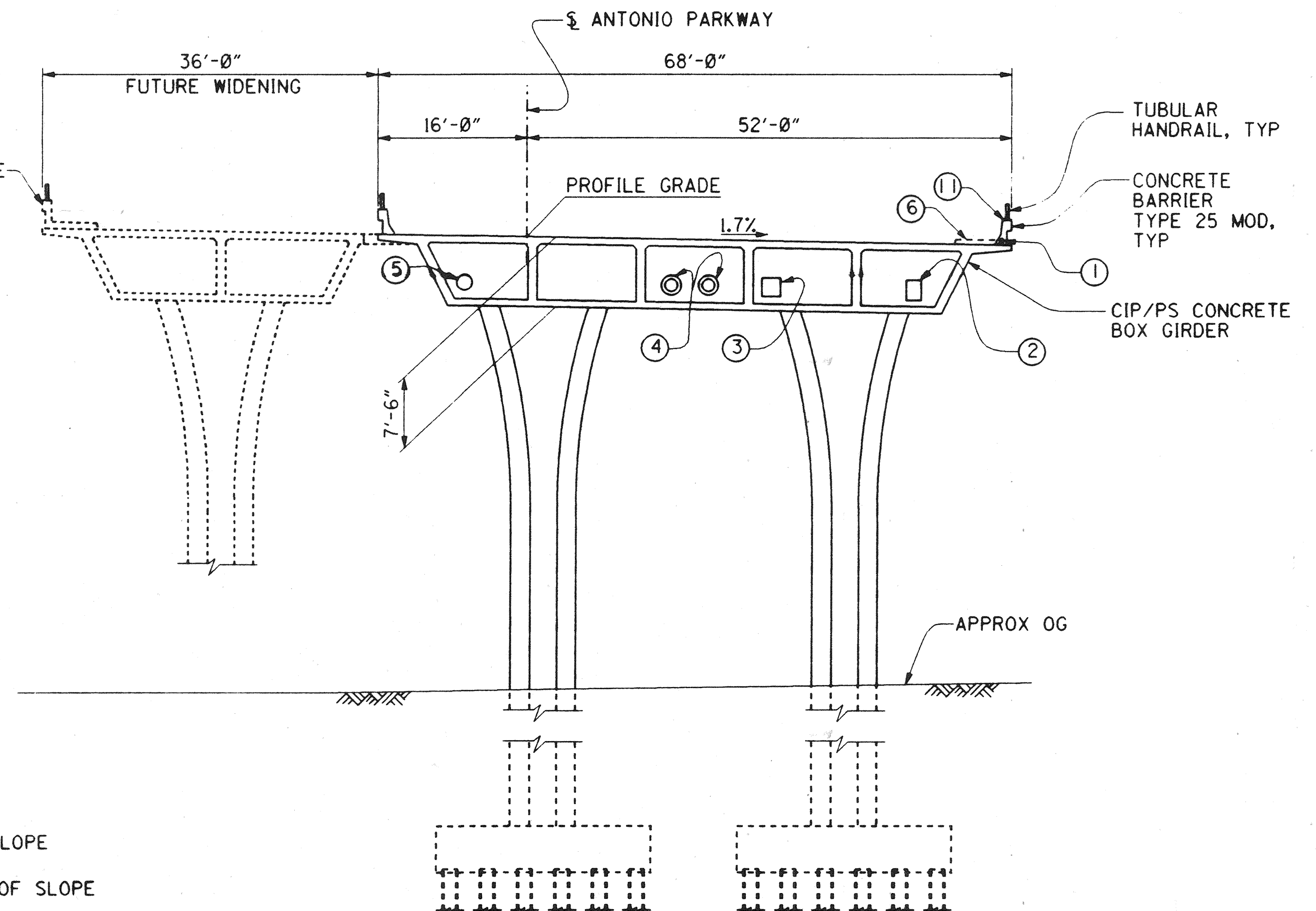


ELEVATION
1"=100'

PLAN
1"=100'

NOTES:

1. FOR GENERAL NOTES, CALTRANS STANDARD PLANS LIST, AND INDEX TO PLANS, SEE "INDEX TO PLANS" SHEET. FOR FILE DATA, SEE "FOUNDATION PLAN NO.1" SHEET.
2. FOR DECK DRAIN LOCATIONS, SEE "DECK DRAIN DETAILS" SHEET.



TYPICAL SECTION
1"=10'-0"

LEGEND

- = INDICATES NEW STRUCTURE
- - - = INDICATES FUTURE STRUCTURE
- ① = 2 - 4" CONDUITS (COX CABLE)
- ② = UTILITY OPENING (SDG&E) FOR DIMENSIONS, SEE "TYPICAL SECTION" SHEET
- ③ = 24"x24" UTILITY OPENING (PAC BELL)
- ④ = 26" Ø UTILITY OPENING (IN BENT CAPS) W/16" CML&C STEEL PIPE (SMWD), SEE "SMWD UTILITY DETAILS" SHEET
- ⑤ = 20" Ø UTILITY OPENING FOR FUTURE 8" HDPE PIPE (SMWD), SEE "SMWD UTILITY DETAILS" SHEET
- ⑥ = FUTURE SIDEWALK
- ⑦ = RIPRAP BANK PROTECTION
- ⑧ = RIPRAP PILE CAP PROTECTION
- ⑨ = STRUCTURE APPROACH TYPE N(30S)
- ⑩ = METAL BEAM GUARDRAIL, TYPE 1 FLARE
- ⑪ = TYPE 9A PULL BOX IN TOP OF BARRIER (TOT 3) SEE "MISCELLANEOUS DETAILS" SHEET

RECORD DRAWING

DR. 3 (16158)
Sheet 49 of 126

1/2" = 0' 1" = 12' 2" = 24' 3" = 36' 4" = 48' 5" = 60' 6" = 72' 7" = 84' 8" = 96' 9" = 108' 10" = 120'

ORANGE COUNTY
ENVIRONMENTAL MANAGEMENT AGENCY
ANTONIO PARKWAY
BRIDGE OVER
SAN JUAN CREEK

GENERAL PLAN

1/27

SHEET

49

OF 126

PLANS PREPARED BY:

HNTB

26 EXECUTIVE PARK
SUITE 300
IRVINE, CALIFORNIA 92614

MARK DATE DESCRIPTION
REVISIONS
PREPARED UNDER RESPONSIBLE CHARGE OF
RICHARD A. HUNT
DATE 10/6/96
SCALE AS SHOWN

DESIGNED: Steve A. Whitaker
CHECKED: R. Hunt
DATE 10/6/96
SCALE AS SHOWN

DR. 3 (16158)