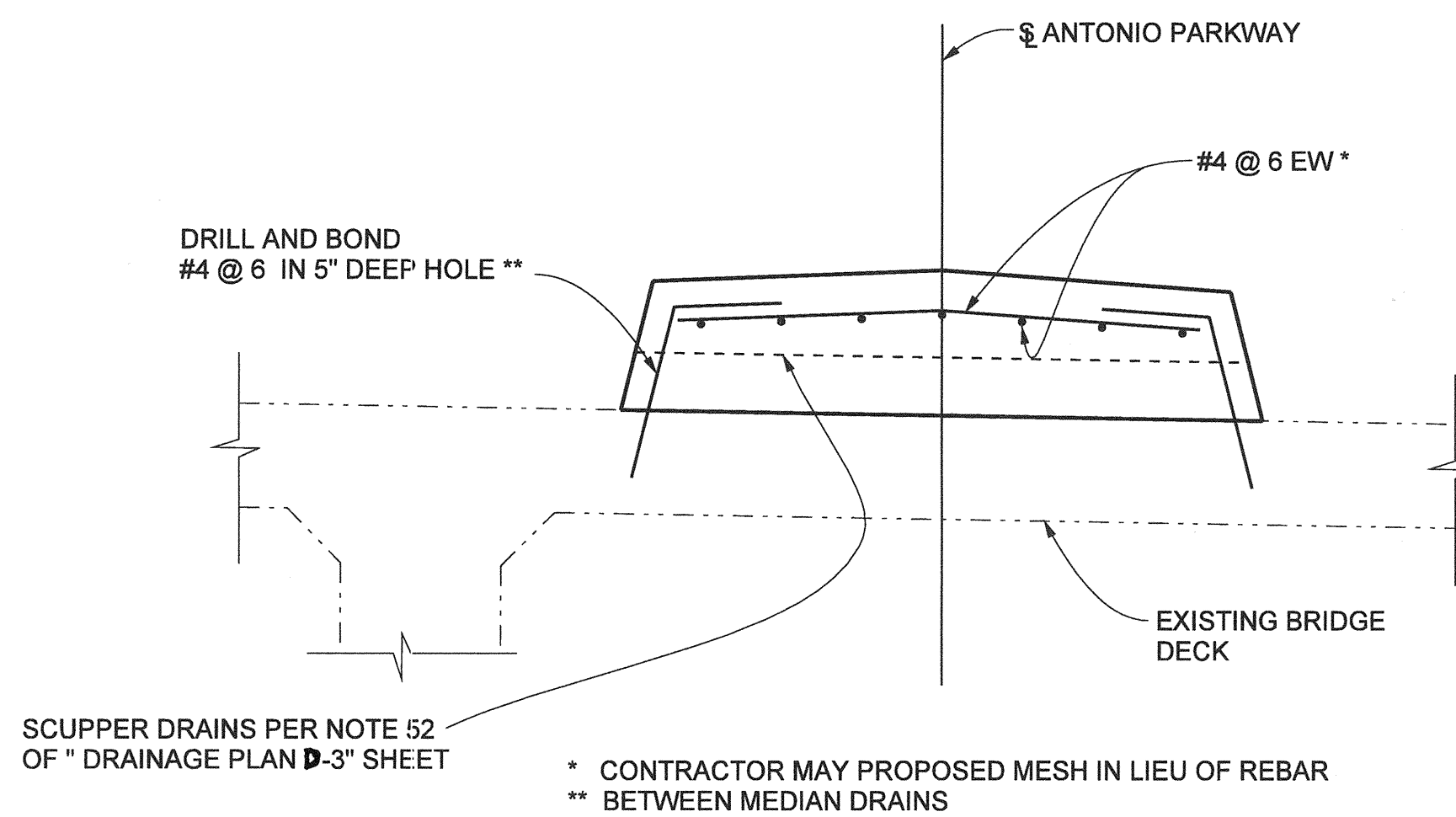


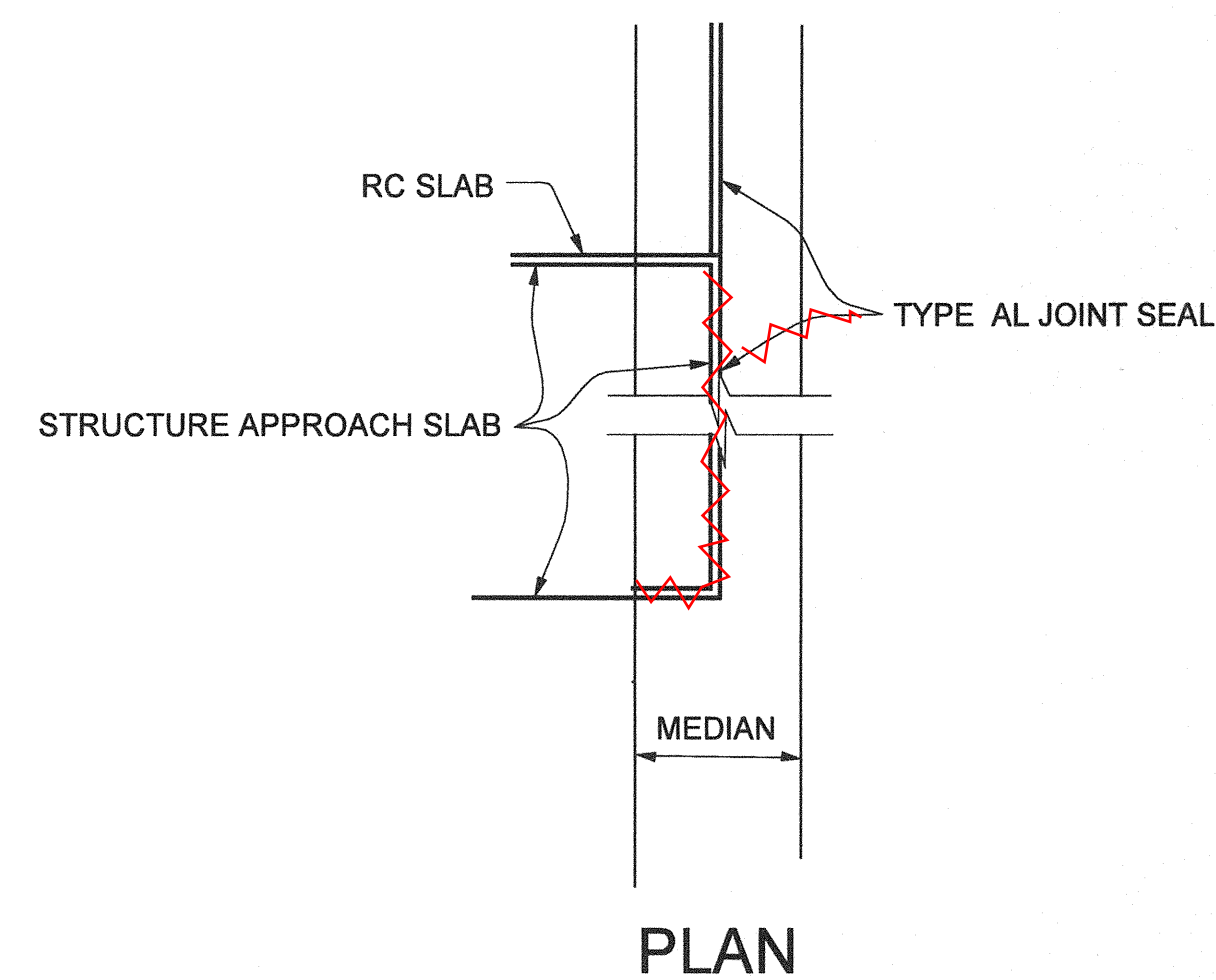
PLAN



RAISED MEDIAN DETAIL ON BRIDGE

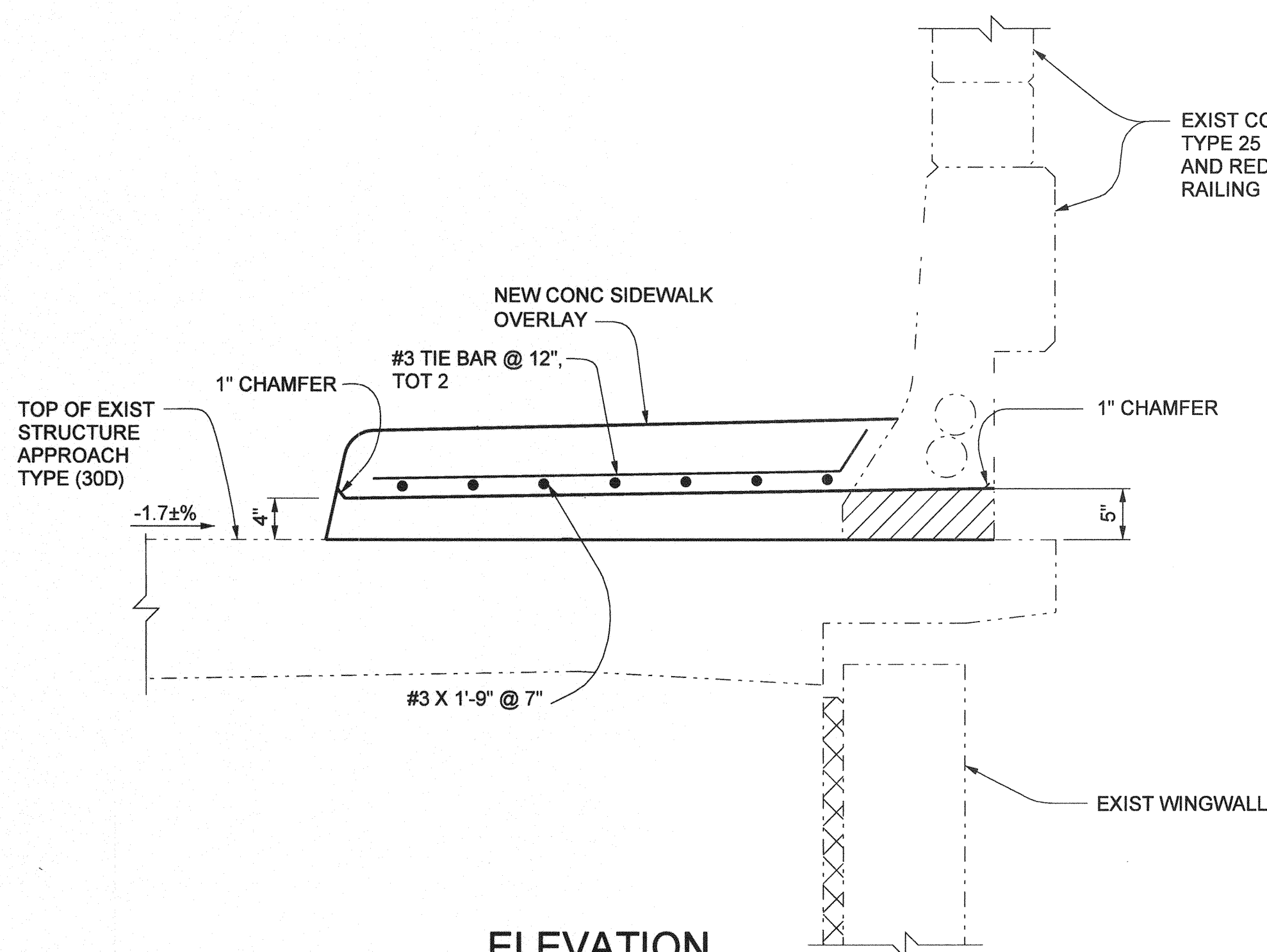
1" = 1'-0"

FOR UNDER MEDIAN DRAIN, SEE CONSTRUCTION NOTE 52 ON SHEET NO. 13



PLAN

TYPE AL JOINT SEAL



ELEVATION

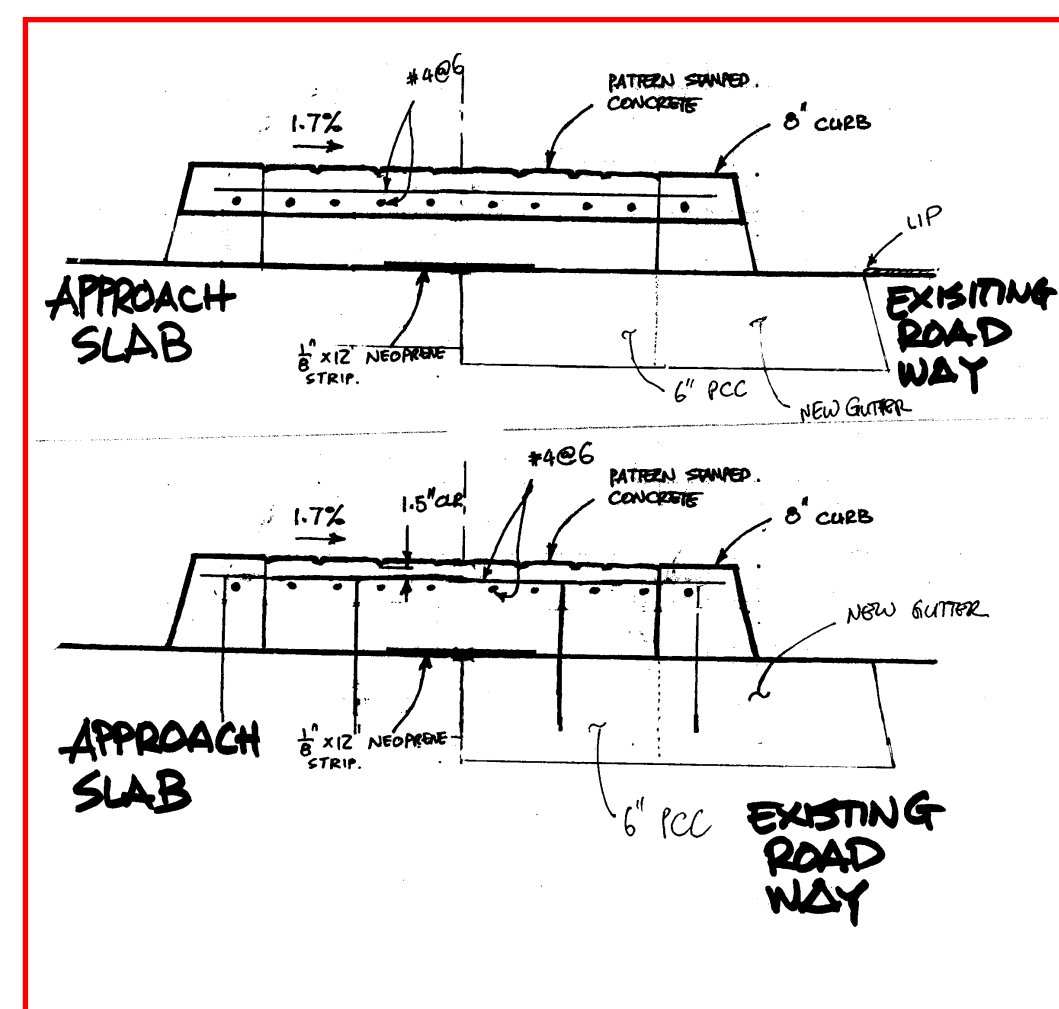
SCUPPER DRAIN DETAIL ON APPROACH SLAB

1" = 1'-0"

FOR SIDEWALK REINF, SEE "SIDEWALK DETAILS" SHEET SECTION A-A

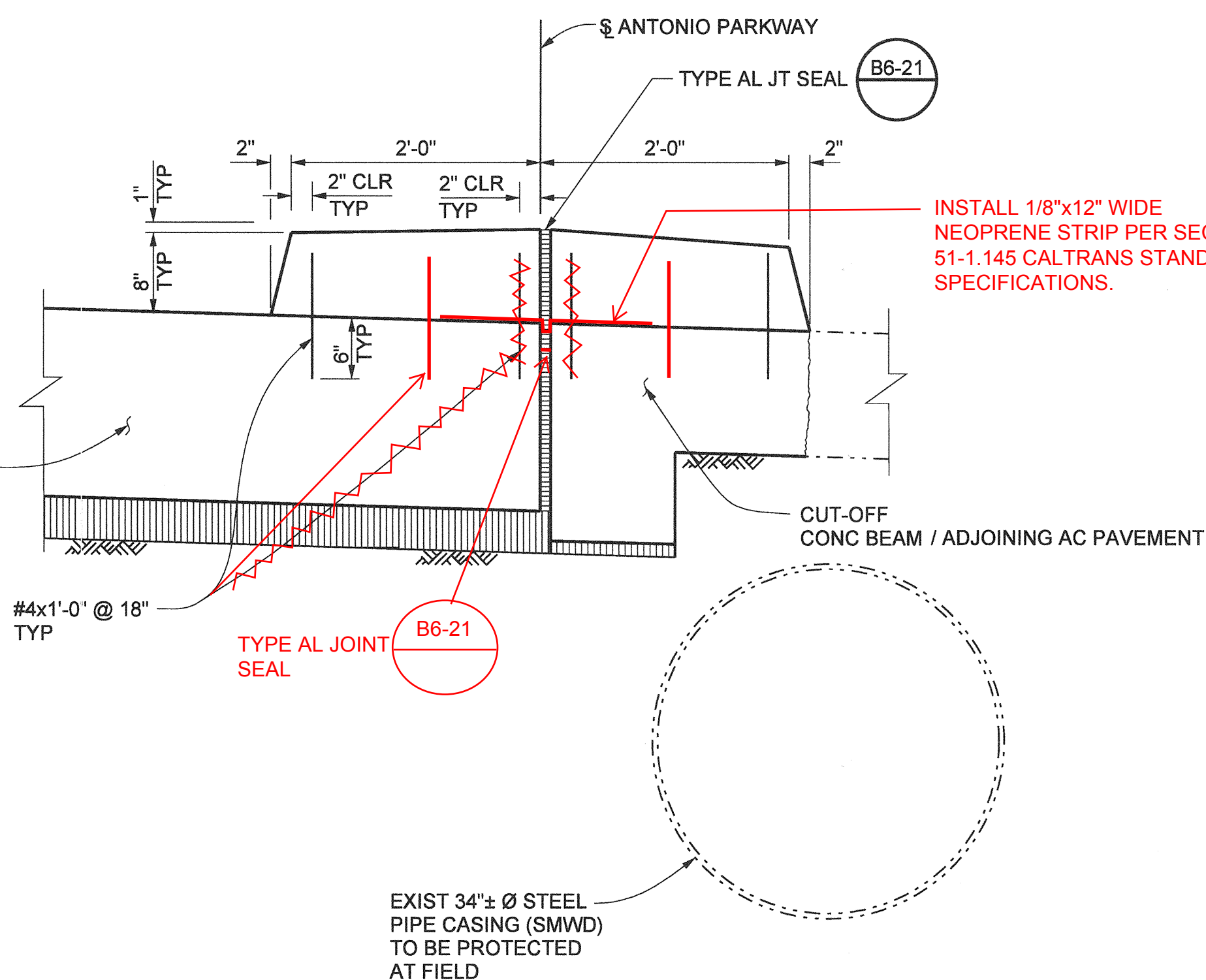
NOTES:

1. THE CONTRACTOR SHALL VERIFY ALL CONTROLLING FIELD DIMENSIONS BEFORE ORDERING OR FABRICATING ANY MATERIAL.



LEGEND

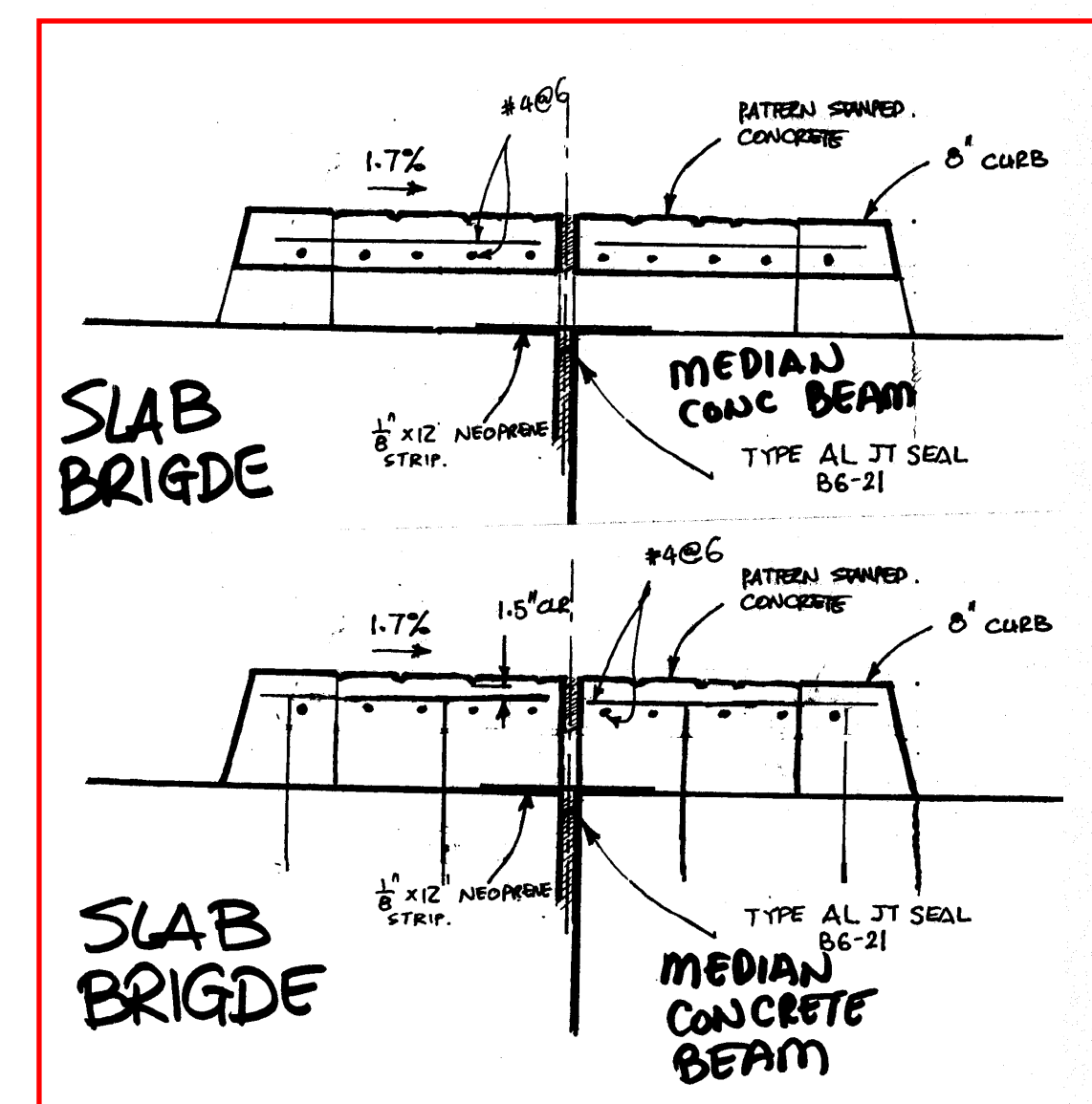
- BRIDGE REMOVAL (PORTION)
- DENOTES EXISTING STRUCTURE
- DENOTES NEW STRUCTURE



RAISED MEDIAN DETAIL
ON RC SLAB AND APPROACH SLAB

1" = 1'-0"

RC SLAB SHOWN, STRUCTURE APPROACH TYPE N (10N) SIMILAR



1/2 0 2
3 inches on original drawing

ORANGE COUNTY RESOURCES & DEVELOPMENT MANAGEMENT DEPT		ANTONIO PARKWAY WILDLIFE UNDERCROSSING (WIDEN)	
MISCELLANEOUS DETAILS			
MARK	DATE	DESCRIPTION	
REVISIONS			
PREPARED UNDER RESPONSIBLE CHARGE OF:			
DESIGNED	J. WANG	CHECKED	F. JEANG
DRAWN	N. MORALES	DATE	9/19/08
SCALE	AS SHOWN	DRAWING NO.	
SHEET			70
OF 72			

PLANS PREPARED BY:
HNTB
HNTB Corporation
200 E. SANDPOINT AVENUE, SUITE 200
SANTA ANA, CALIFORNIA 92707
TEL (714) 460-1600 FAX (714) 460-1610

Date Plotted:

File Name: J:\34092\CADD\Structs\sheet\antonio\pkwy-S-29.dgn