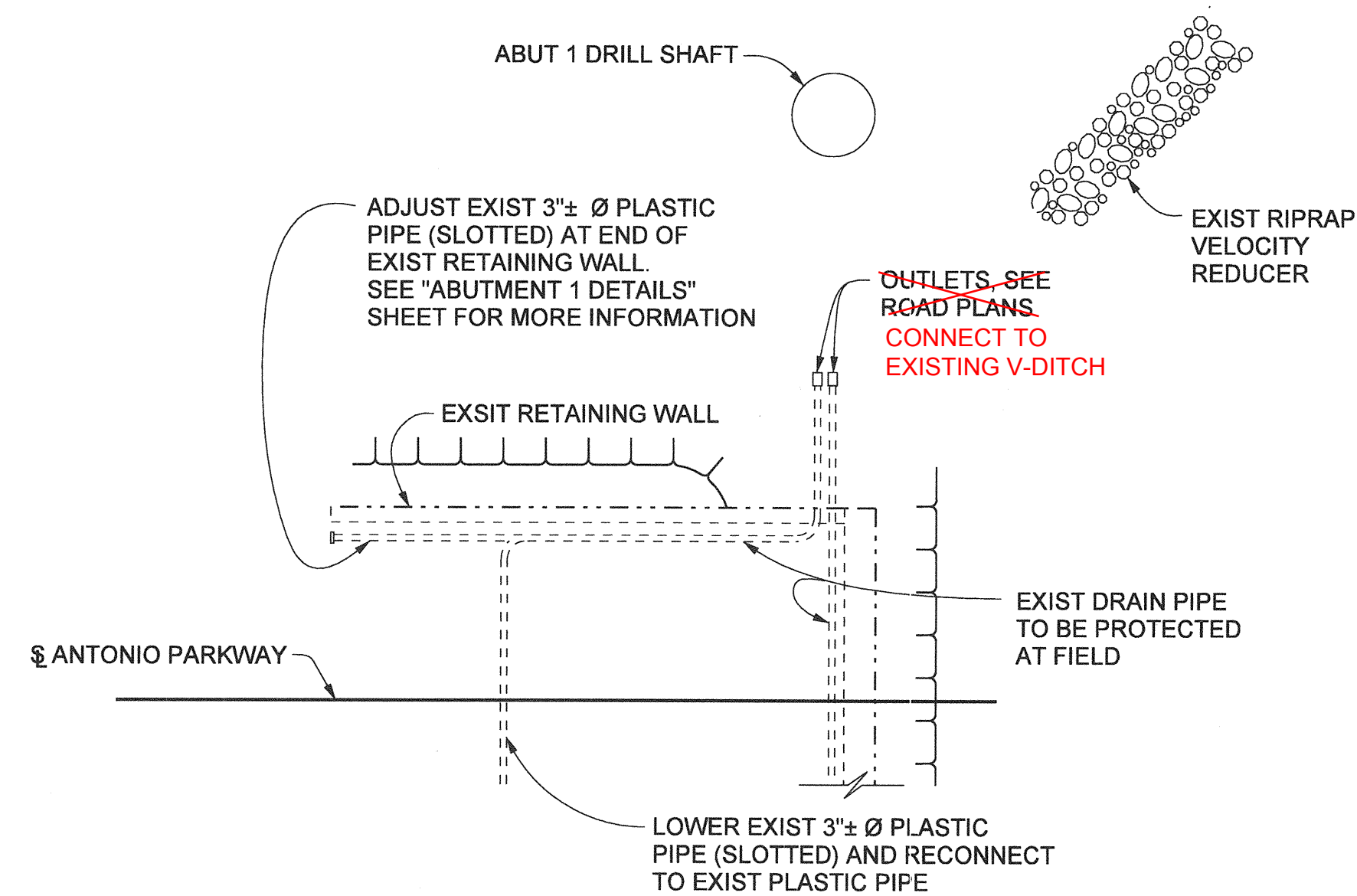


ABUTMENT W

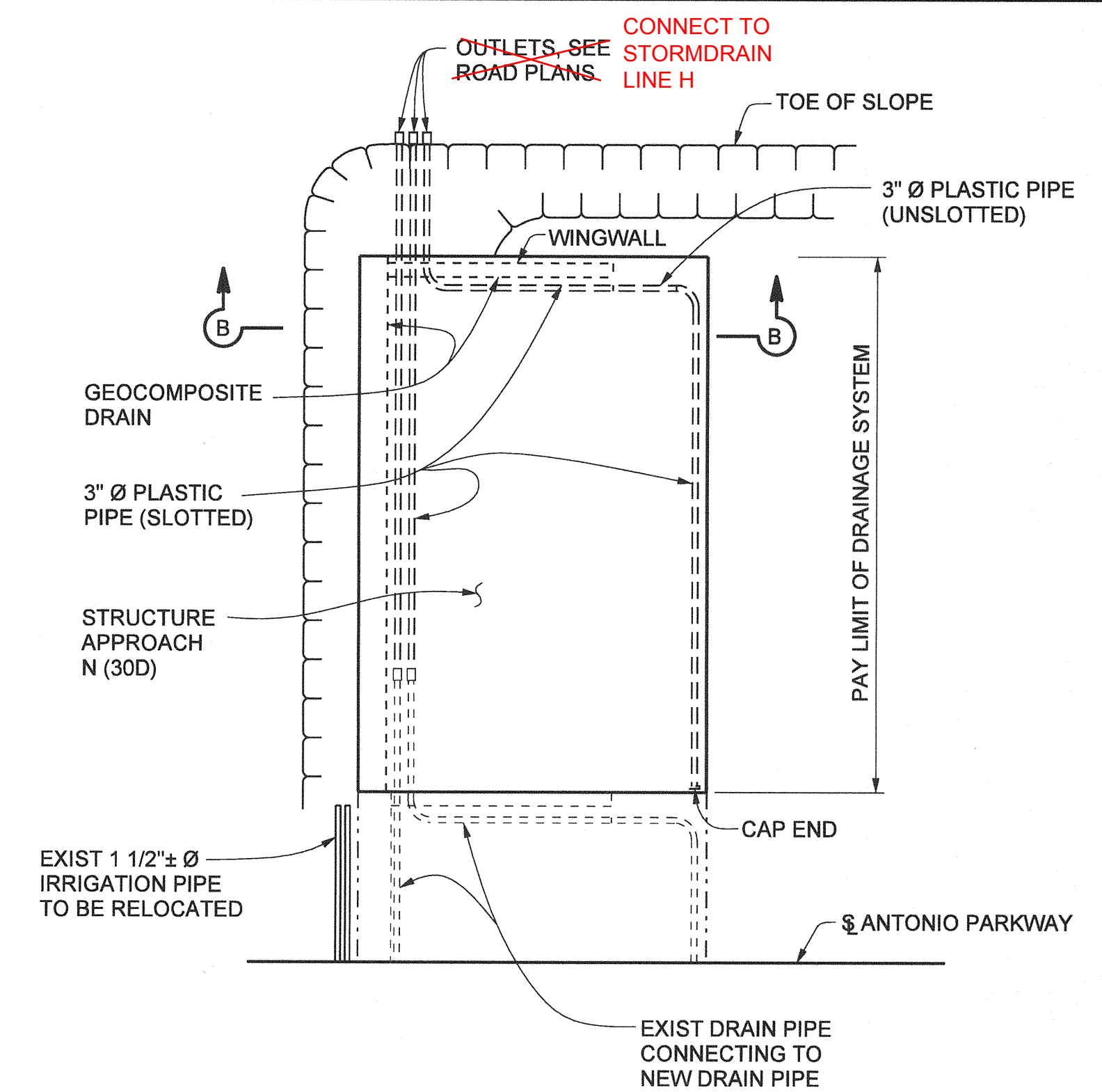


ABUTMENT 1

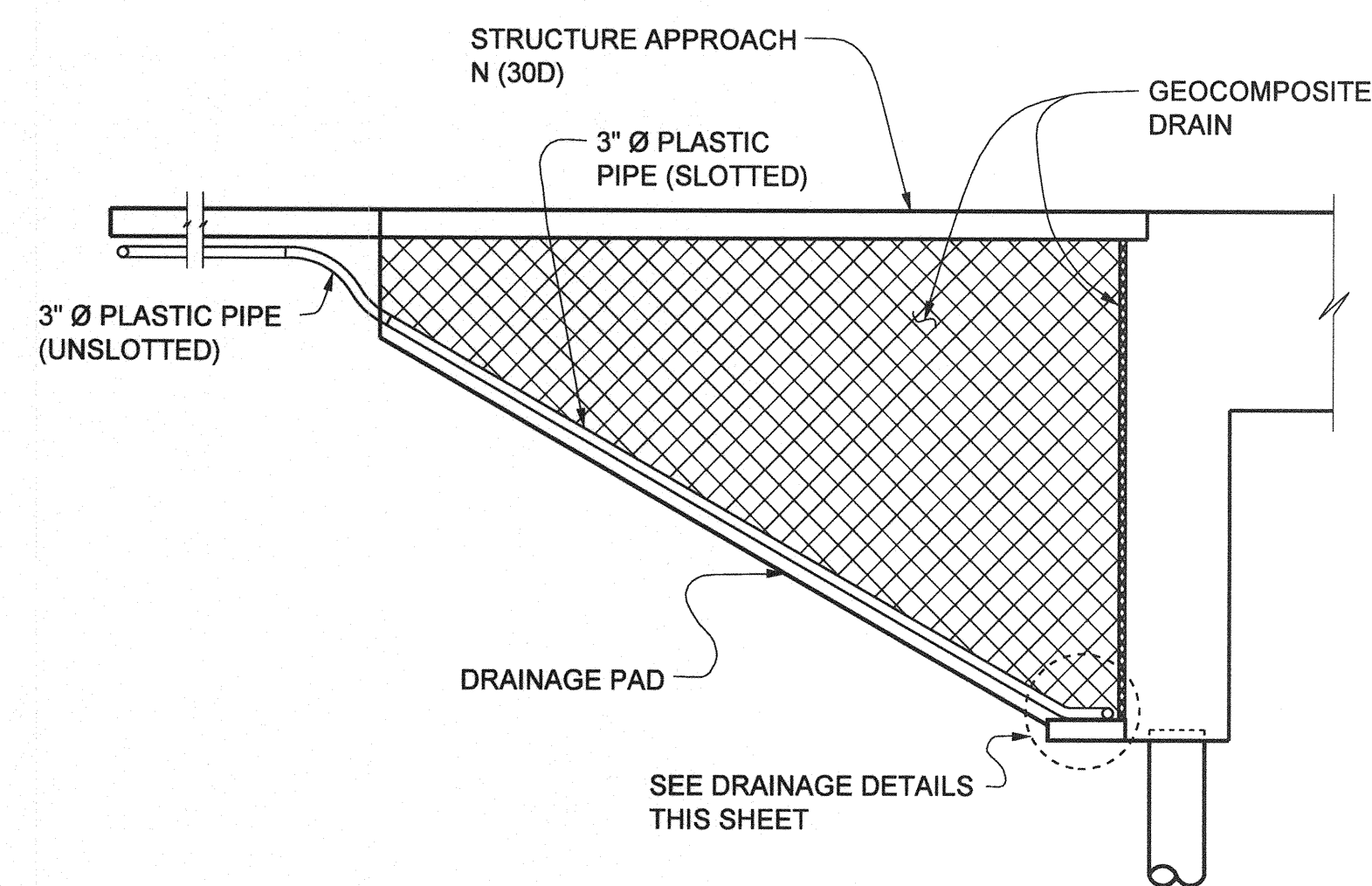
EXIST STRUCTURE APPROACH NOT SHOWN FOR CLARITY

STRUCTURE APPROACH DRAINAGE PLAN

NO SCALE

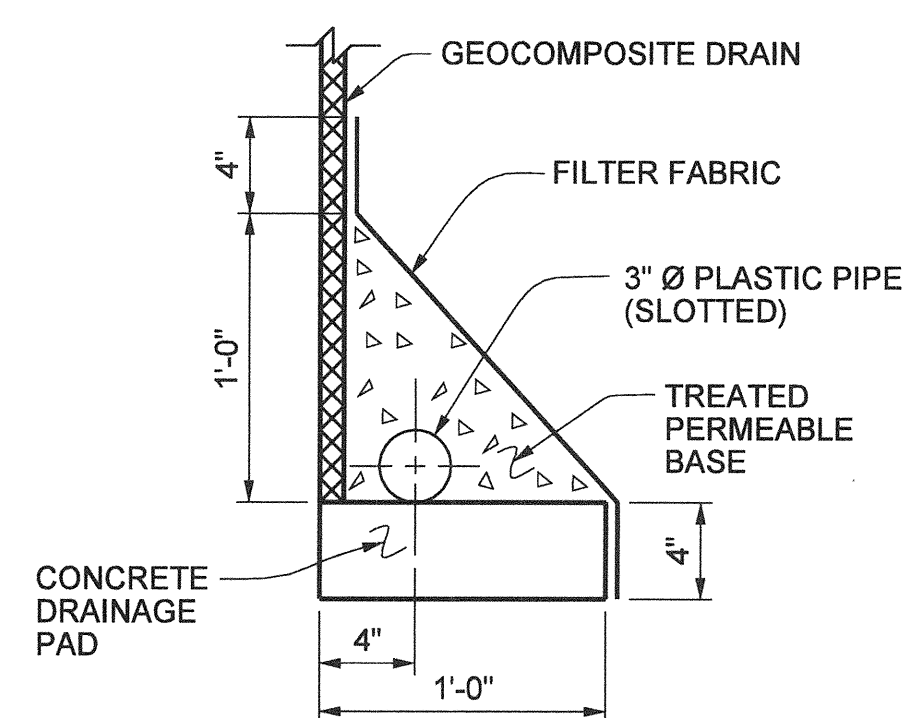


ABUTMENT 4

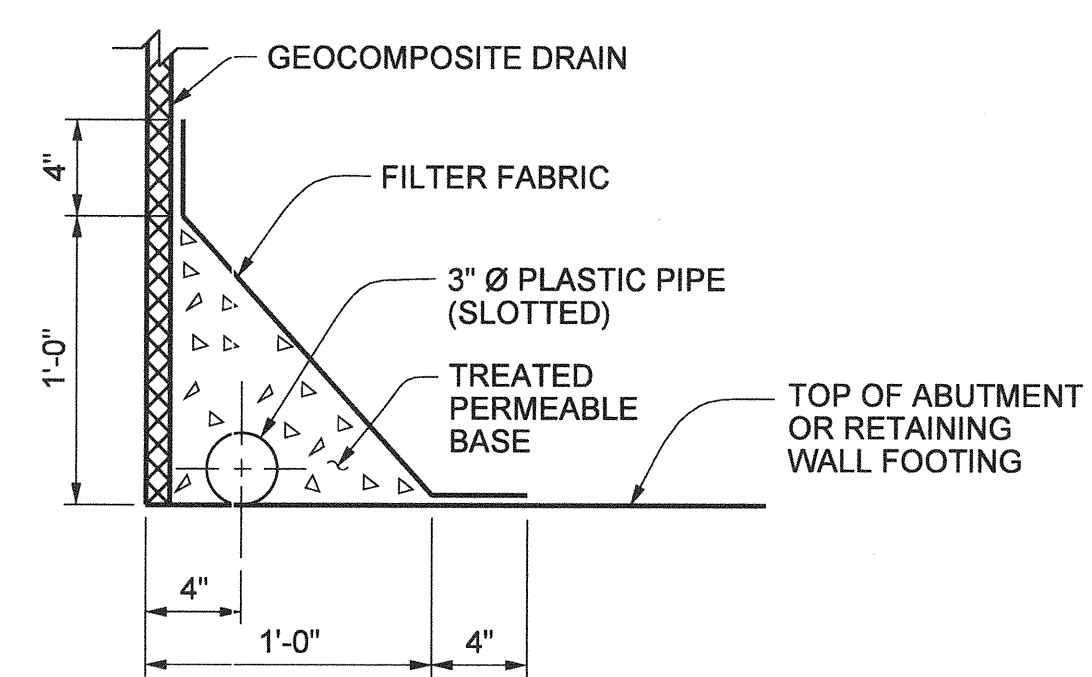


SECTION A-A

1/4" = 1'-0"



WITHOUT FOOTING



WITH FOOTING

DRAINAGE DETAILS

1 1/2" = 1'-0"

NOTES:

1. THE CONTRACTOR SHALL VERIFY ALL CONTROLLING FIELD DIMENSIONS BEFORE ORDERING OR FABRICATING ANY MATERIAL.
2. BENTS AND JUNCTIONS IN 3" PLASTIC PIPE ARE 30" RADIUS MINIMUM.

LEGEND

- DENOTES EXISTING STRUCTURE
- DENOTES NEW STRUCTURE

AS BUILT

CORRECTION BY: MN
CONTRACT NO.: ER28121
DATE: 12/30/2009

PLANS PREPARED BY:
HNTB
HNTB Corporation
200 E. SANDPOINT AVENUE, SUITE 200
SANTA ANA, CALIFORNIA 92707
TEL (714) 460-1600 FAX (714) 460-1610

| | | | |
|--|-------------------------|--|--|
| ORANGE COUNTY RESOURCES & DEVELOPMENT MANAGEMENT DEPT | | ANTONIO PARKWAY WILDLIFE UNDERCROSSING (WIDEN) | |
| STRUCTURE APPROACH DRAINAGE DETAILS | | | |
| DESIGNED <u>J. WANG</u> | CHECKED <u>F. JEANG</u> | SHEET 67 OF 72 | |
| DRAWN <u>J. ZHANG</u> | DATE <u>9/18/08</u> | DRAWING NO. | |
| DATE PLOTTED: <u>10/21/06</u> | | | |