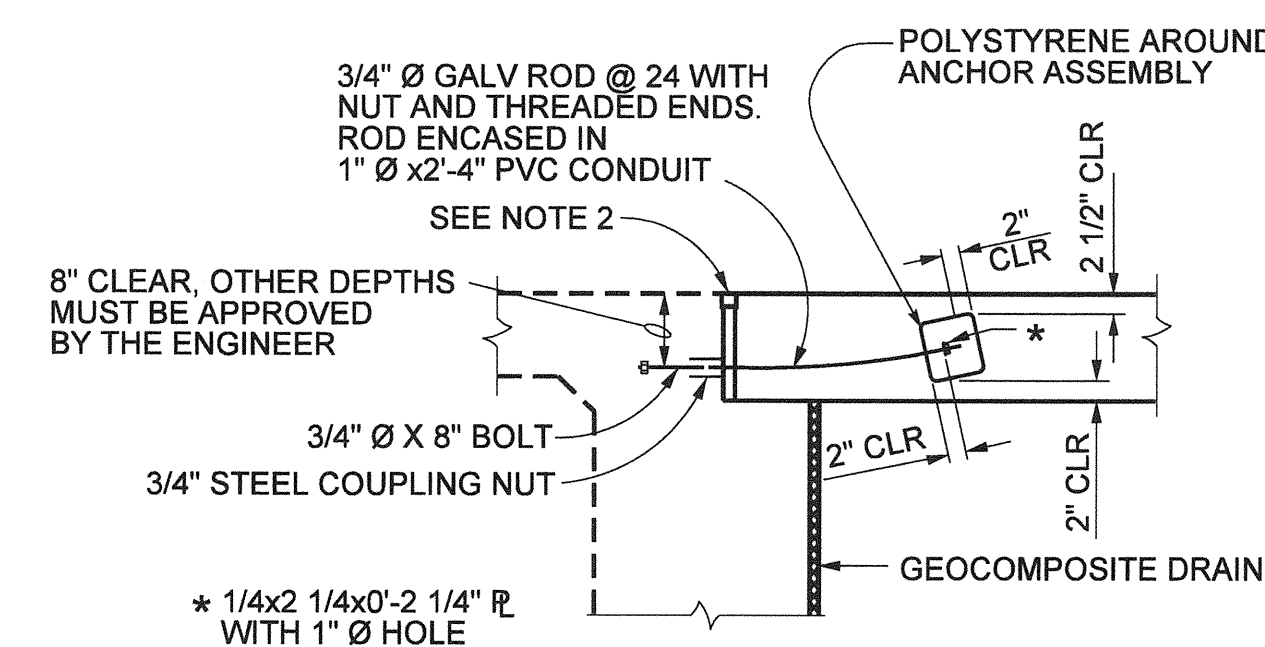


AS BUILT

CORRECTION BY: MN
CONTRACT NO.: ER28121
DATE: 12/30/2009

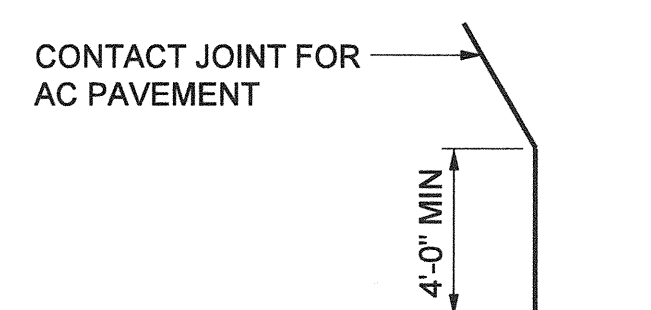
NO SCALE



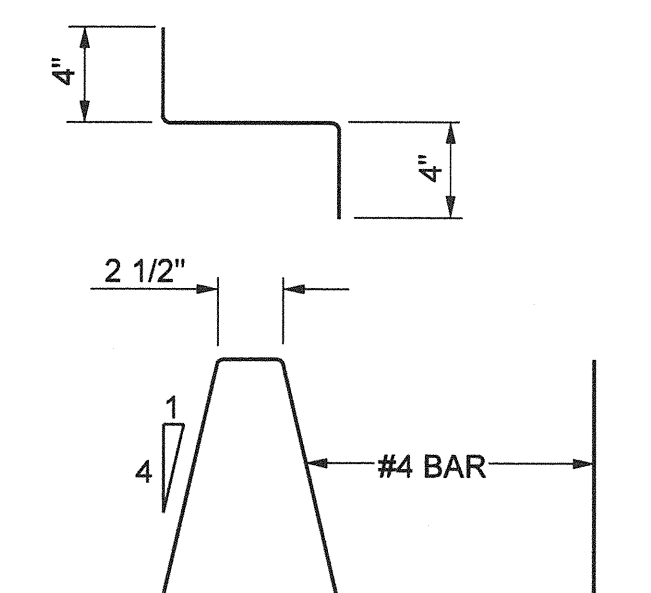
APPROACH SKEW	WITH AC ROADWAY PAVEMENT	WITH PCC ROADWAY PAVEMENT
< 20°	PARALLEL TO FACE OF PAVING NOTCH	PARALLEL TO FACE OF PAVING NOTCH
20° - 45°	PARALLEL TO FACE OF P N USE (DETAIL A)	STAGGER LINES 24' TO 36' APART
> 45°	PARALLEL TO FACE OF P N USE (DETAIL A)	STAGGER AT EACH LANE LINE

NO SCALE

NO SCALE

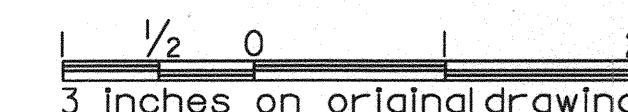


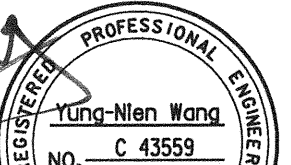
NO SCALE


$$1\frac{1}{2}'' = 1'-0''$$

1. THE CONTRACTOR SHALL VERIFY ALL CONTROLLING FIELD DIMENSIONS BEFORE ORDERING OR FABRICATING ANY MATERIAL.
2. FOR DETAILS, NOT NOTED OR SHOWN, SEE STRUCTURE PLANS.
3. FOR DRAINAGE DETAILS, SEE "STRUCTURE APPROACH DRAINAGE DETAILS" SHEET.
4. LONGITUDINAL CONSTRUCTION JOINTS, WHEN PERMITTED BY THE ENGINEER, SHALL BE LOCATED ON LANE LINES.
5. AT THE CONTRACTOR'S OPTION, APPROACH SLAB TRANSVERSE REINFORCEMENT MAY BE PLACED PARALLEL TO PAVING NOTCH. SPACING OF TRANSVERSE REINFORCEMENT IS MEASURED ALONG C&D WAY.

 POLYSTYRENE TO BE REMOVED.



				ORANGE COUNTY RESOURCES & DEVELOPMENT MANAGEMENT DEPT.			
				ANTONIO PARKWAY WILDLIFE UNDERCROSSING (WIDEN)			
MARK	DATE	DESCRIPTION					
REVISIONS							
PREPARED UNDER RESPONSIBLE CHARGE OF:							
							
Yung-Nien Wang		DATE 10/31/06					
RCE C 43559 (EXP. 6-30-06)							
		DESIGNED <u>J. WANG</u>				SHEET	
		DRAWN <u>J.A. WANG</u>		CHECKED <u>F. JEANG</u>		66	
		SCALE		DATE		DRAWING NO.	
		AS SHOWN		9/19/06		OF 72	

PLANS PREPARED BY: **HNTB** Corporation
200 E. SANDPOINTE AVENUE, SUITE 200
SANTA ANA, CALIFORNIA 92707
TEL (714) 460-1600 FAX (714) 460-1610

Date Plotted

File Name: J:\34092\CADD\Strc\sheets\antonio.pkw-S-25.dgn

Border sheet last modified 09-Nov-1999