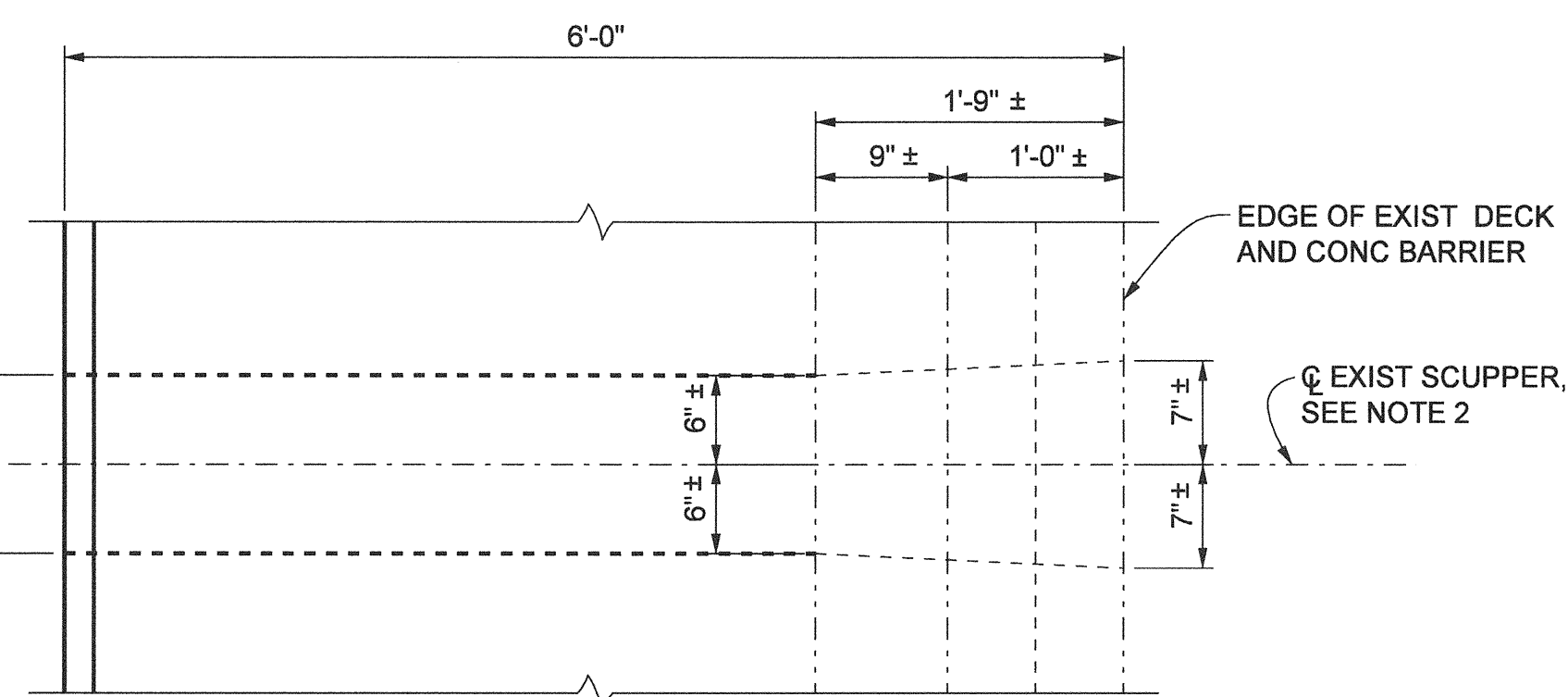


MIRRORED ELEVATION

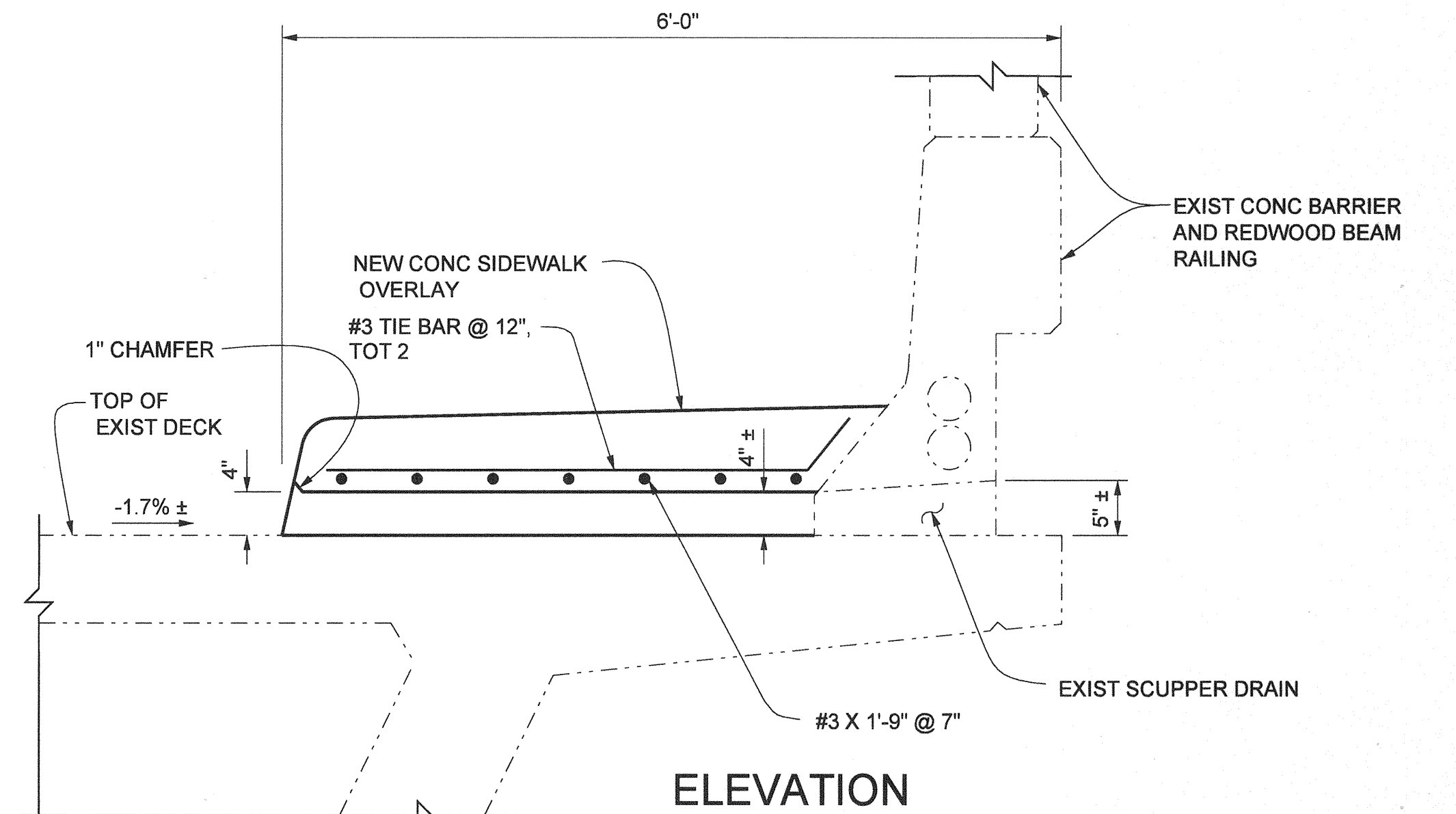
NO SCALE
EXIST REDWOOD BEAM RAILING NOT SHOWN FOR CLARITY



PLAN

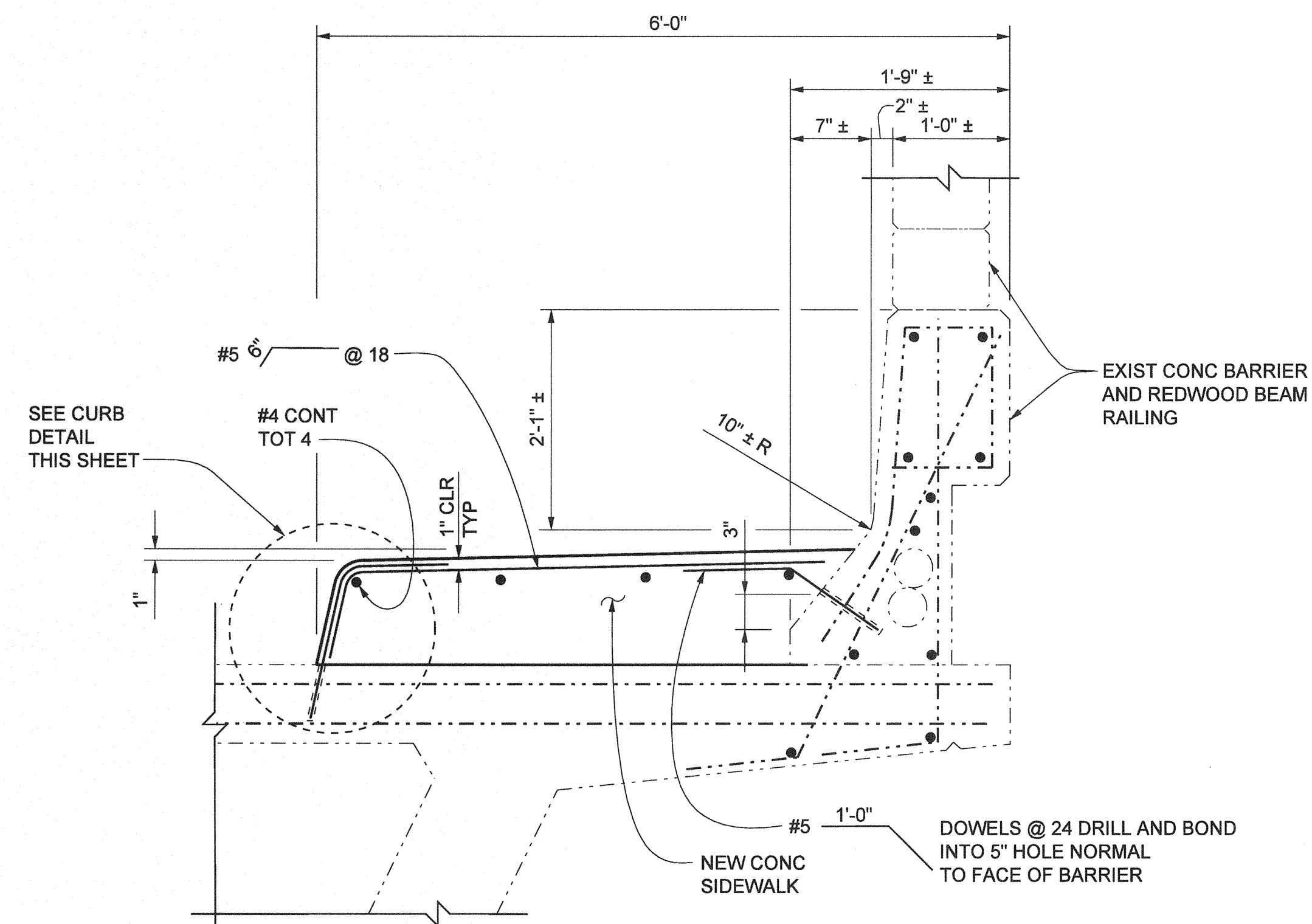
SCUPPER DRAIN DETAILS ON BRIDGE

1" = 1'-0"



ELEVATION

FOR SIDEWALK REINF, SEE SECTION A-A



SECTION A-A

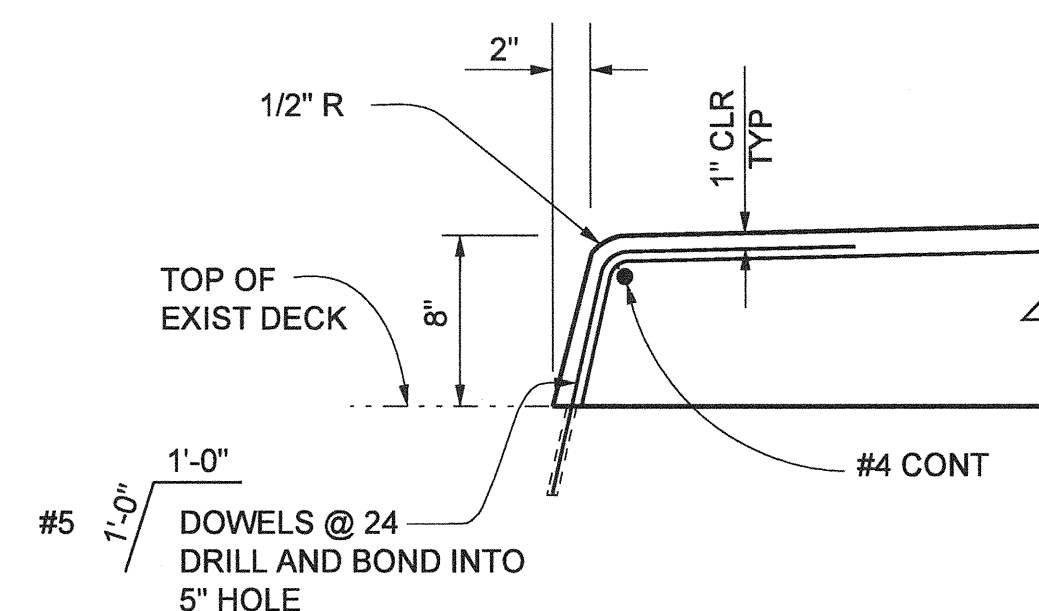
1" = 1'-0"

NOTES:

1. THE CONTRACTOR SHALL VERIFY ALL CONTROLLING FIELD DIMENSIONS BEFORE ORDERING OR FABRICATING ANY MATERIAL.
2. SCUPPER DRAIN TO BE PLACED IN EAST SIDE NEW CONC SIDEWALK TO CONNECT TO EXIST 1'-0"± WIDE SCUPPER DRAIN IN EXIST CONC BARRIER.
3. FOR SECTION B-B AND SECTION C-C, SEE "FACADE GIRDER DETAILS" SHEET.

LEGEND

- DENOTES EXISTING STRUCTURE
- DENOTES NEW STRUCTURE
- /// DENOTES BRIDGE REMOVAL (PORTION)



CURB DETAIL

1" = 1'-0"

AS BUILT

CORRECTION BY: MN

CONTRACT NO.: ER28121

DATE: 12/30/2009

PLANS PREPARED BY:
HNTB
HNTB Corporation
200 E. SANDPOINTE AVENUE, SUITE 200
SANTA ANA, CALIFORNIA 92707
TEL (714) 460-1600 FAX (714) 460-1610

ORANGE COUNTY RESOURCES & DEVELOPMENT MANAGEMENT DEPT		ANTONIO PARKWAY WILDLIFE UNDERCROSSING (WIDEN)		SHEET 65 OF 72	
SIDEWALK DETAILS					
DESIGNED: <u>J. WANG</u>					
DRAWN: <u>J. WANG</u> CHECKED: <u>F. JIANG</u>					
SCALE: <u>AS SHOWN</u> DATE: <u>9/19/08</u> DRAWING NO.:					

Date Plotted:

File Name: J:\34092\CADD\Strocsheets\antonio\pkwy-S-24.dgn

Border sheet last modified 09-Nov-1999