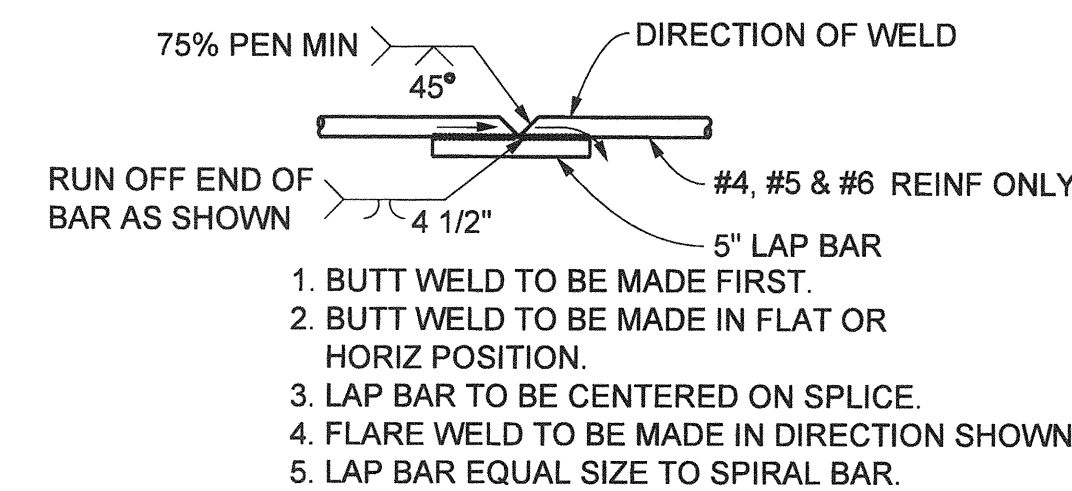


SAME SIZE, SPACING AND MATERIAL AS SPIRAL SHOWN ON PLANS
CJP

INDIVIDUAL HOOPS, MAKE CONTINUOUS WITH 100% PENETRATION WELDS, MAY BE SUBSTITUTED FOR SPIRALS

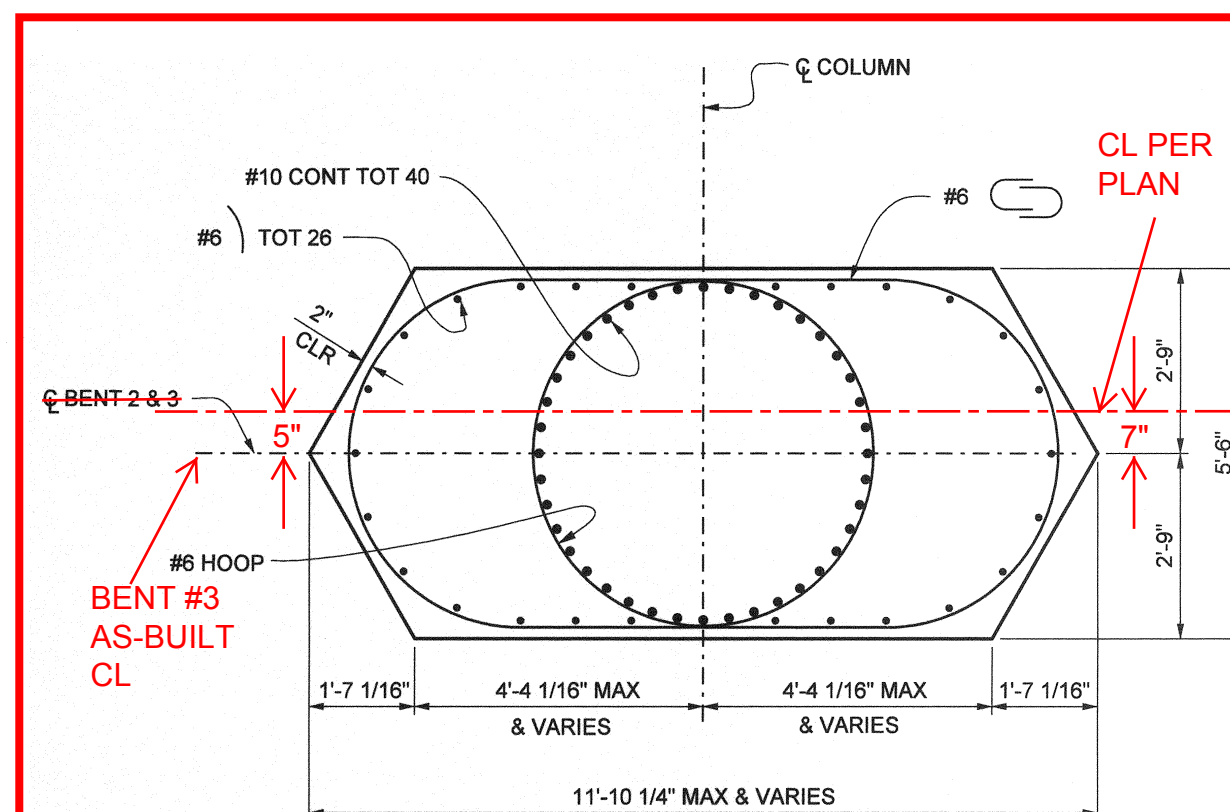
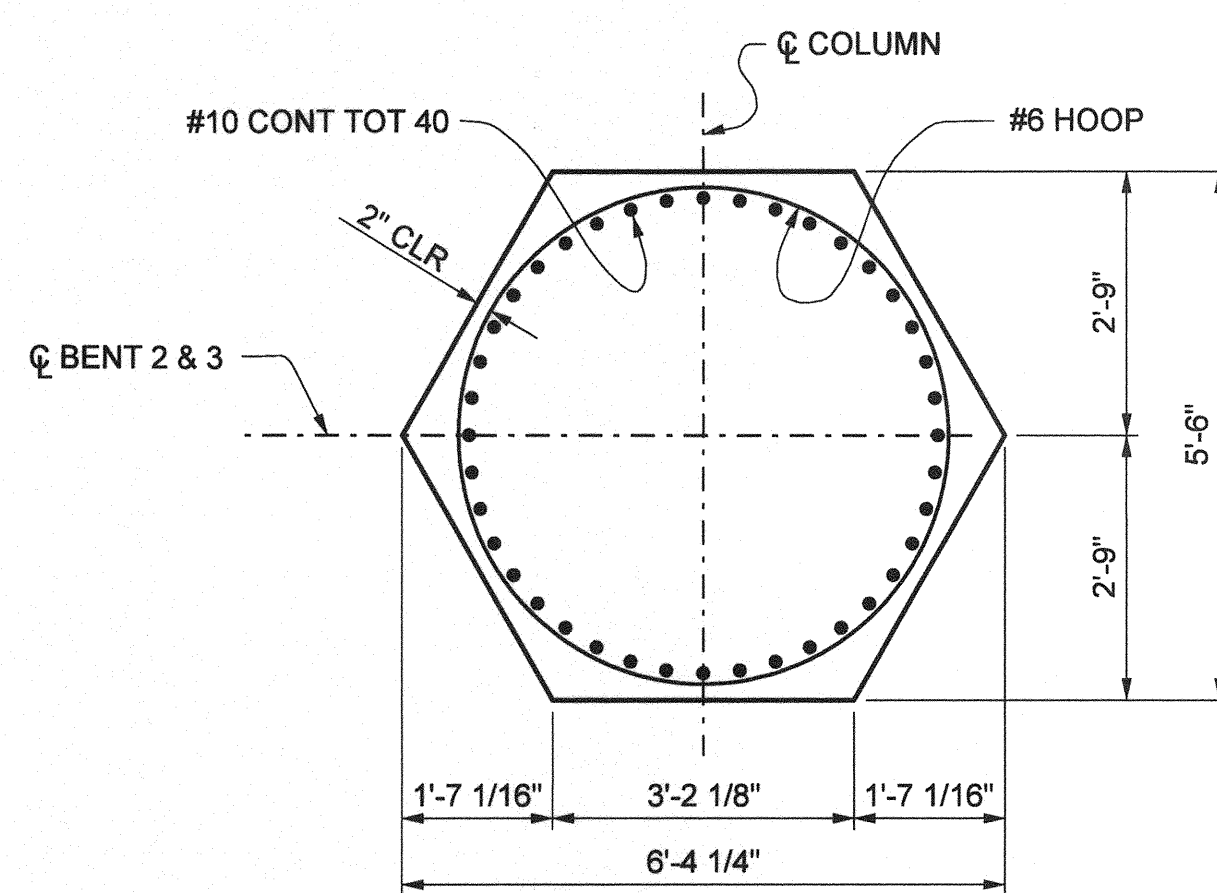
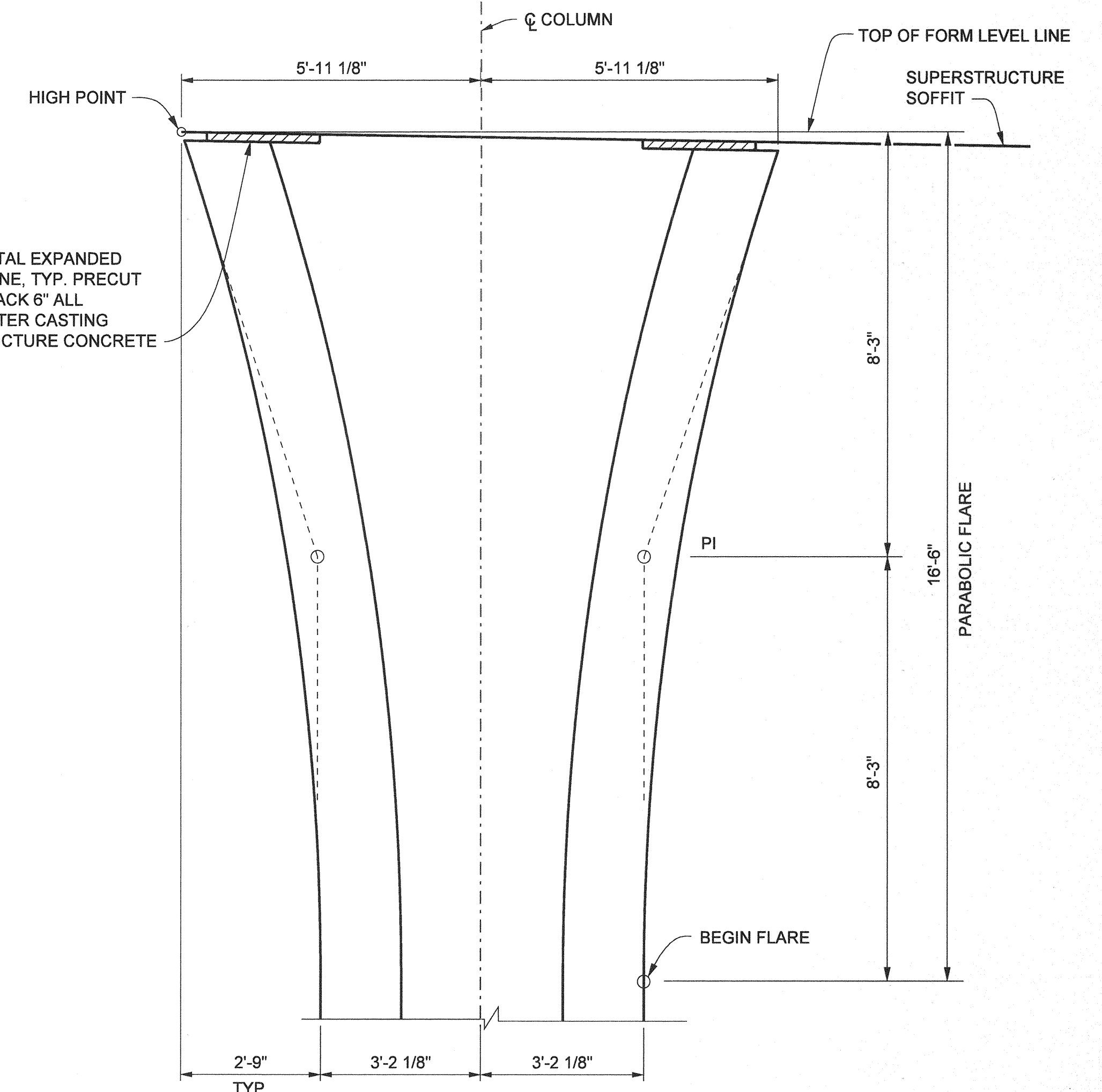
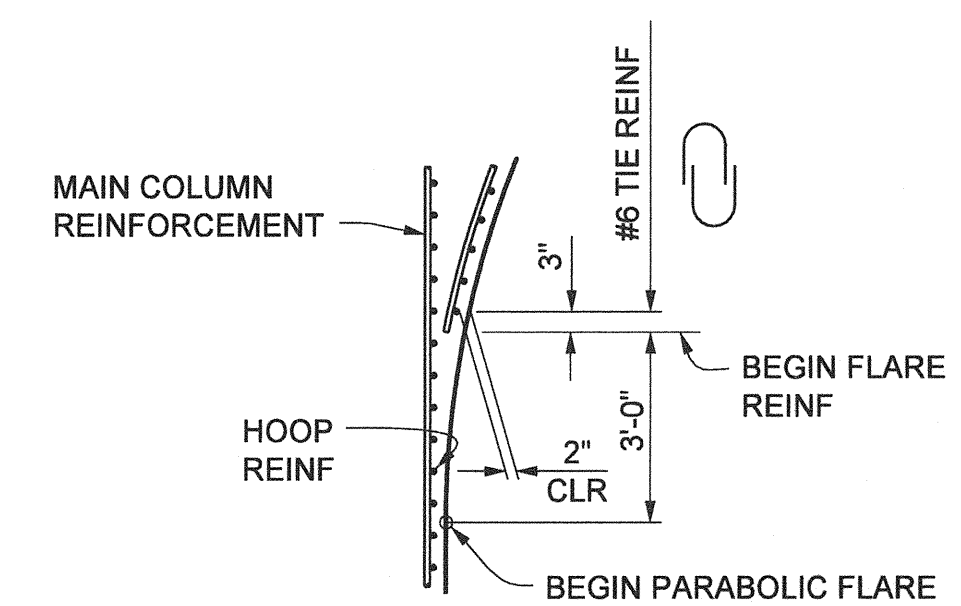
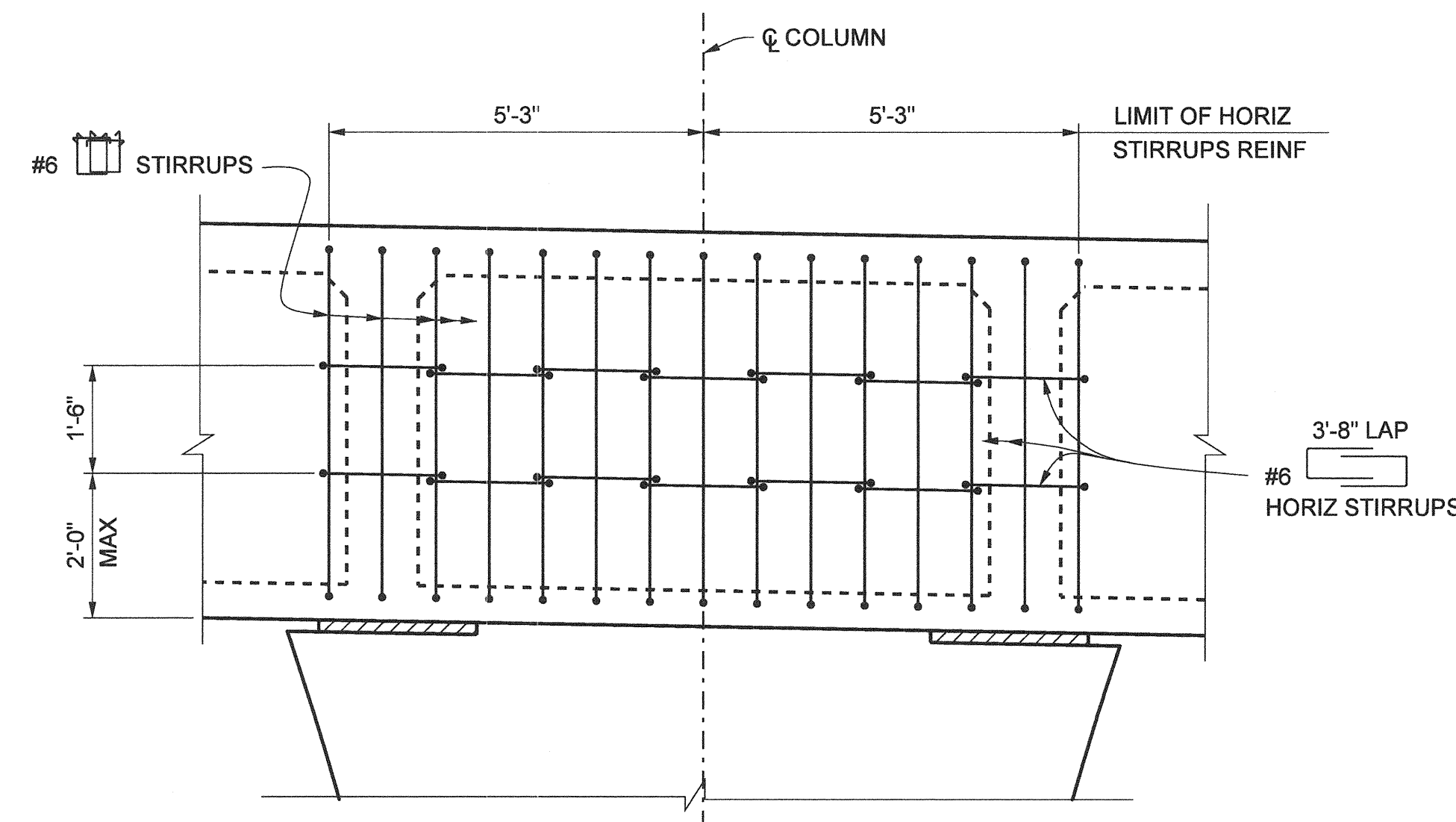


BUTT WELDED CONTINUOUS HOOP

NOTE: SPIRALS FOR BENT W PILE AND HOOPS IN COLUMNS & PILE SHAFTS FOR ABUT 1, BENT 2 & 3 SHALL MEET THE "ULTIMATE SPLICE" SPECIFICATION AS STATED IN THE CONTRACT SPECIFICATIONS.

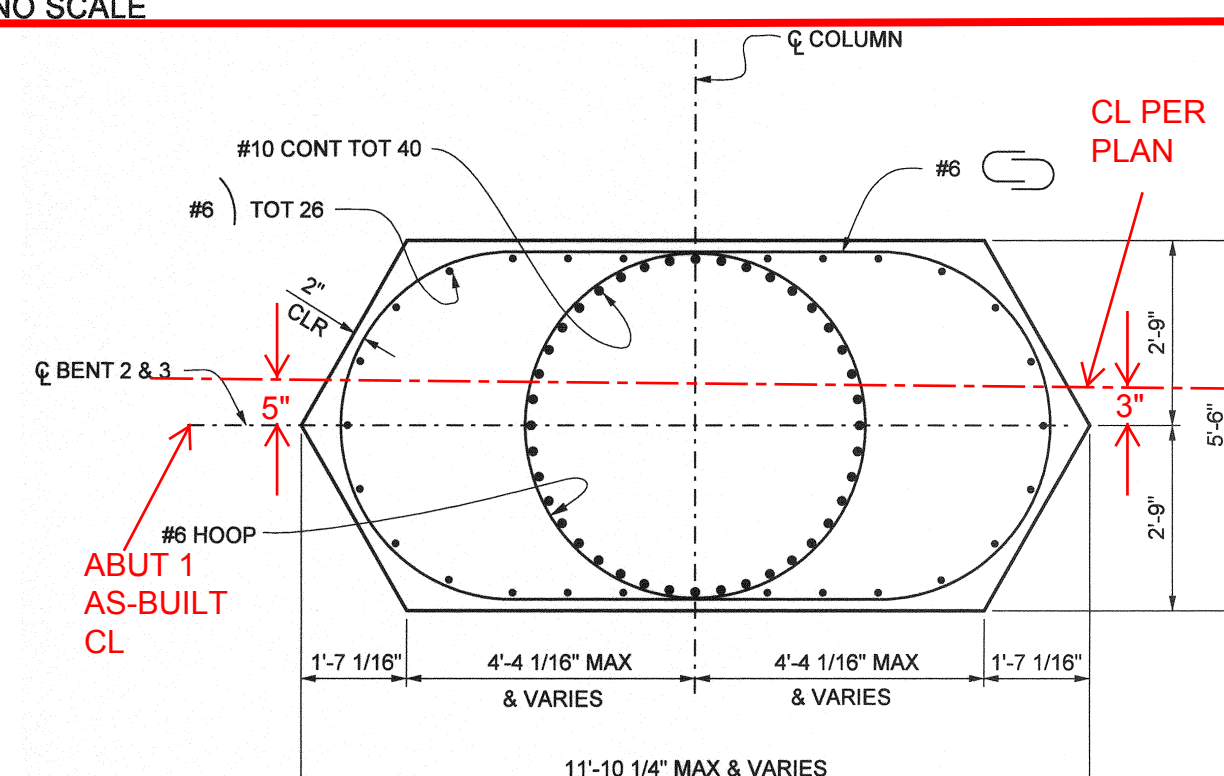
BAR SPIRAL SPLICE & SPIRAL ANCHOR AND HOOP DETAIL

NO SCALE



HORIZONTAL STIRRUP DETAIL

NO SCALE



NOTE:
THE CONTRACTOR SHALL VERIFY ALL CONTROLLING FIELD DIMENSIONS BEFORE ORDERING OR FABRICATING ANY MATERIAL.

AS BUILT

CORRECTION BY: MN
CONTRACT NO.: ER28121
DATE: 12/30/2009

PLANS PREPARED BY: HNTB Corporation
200 E. SANDPOINT AVENUE, SUITE 200
SANTA ANA, CALIFORNIA 92707
TEL (714) 460-1600 FAX (714) 460-1610

ORANGE COUNTY RESOURCES & DEVELOPMENT MANAGEMENT DEPT		ANTONIO PARKWAY WILDLIFE UNDERCROSSING (WIDEN)		BENTS 2 & 3 DETAILS NO. 2	
DESIGNED	J. WANG	CHECKED	E. JIANG	SHEET 54 OF 72	
DRAWN	L. ZHANG	DATE	9/19/08	DRAWING NO.	
PREPARED UNDER RESPONSIBLE CHARGE OF: Yung-Nien Wang RCE C 43559 (EXP. 6-30-06)		DATE 1/31/06		SCALE AS SHOWN	

Date Plotted:

File Name: J:\34092\CADD\Stro\sheet\antoniopkwy-S-13.dgn

Border sheet last modified 09-Nov-1999