

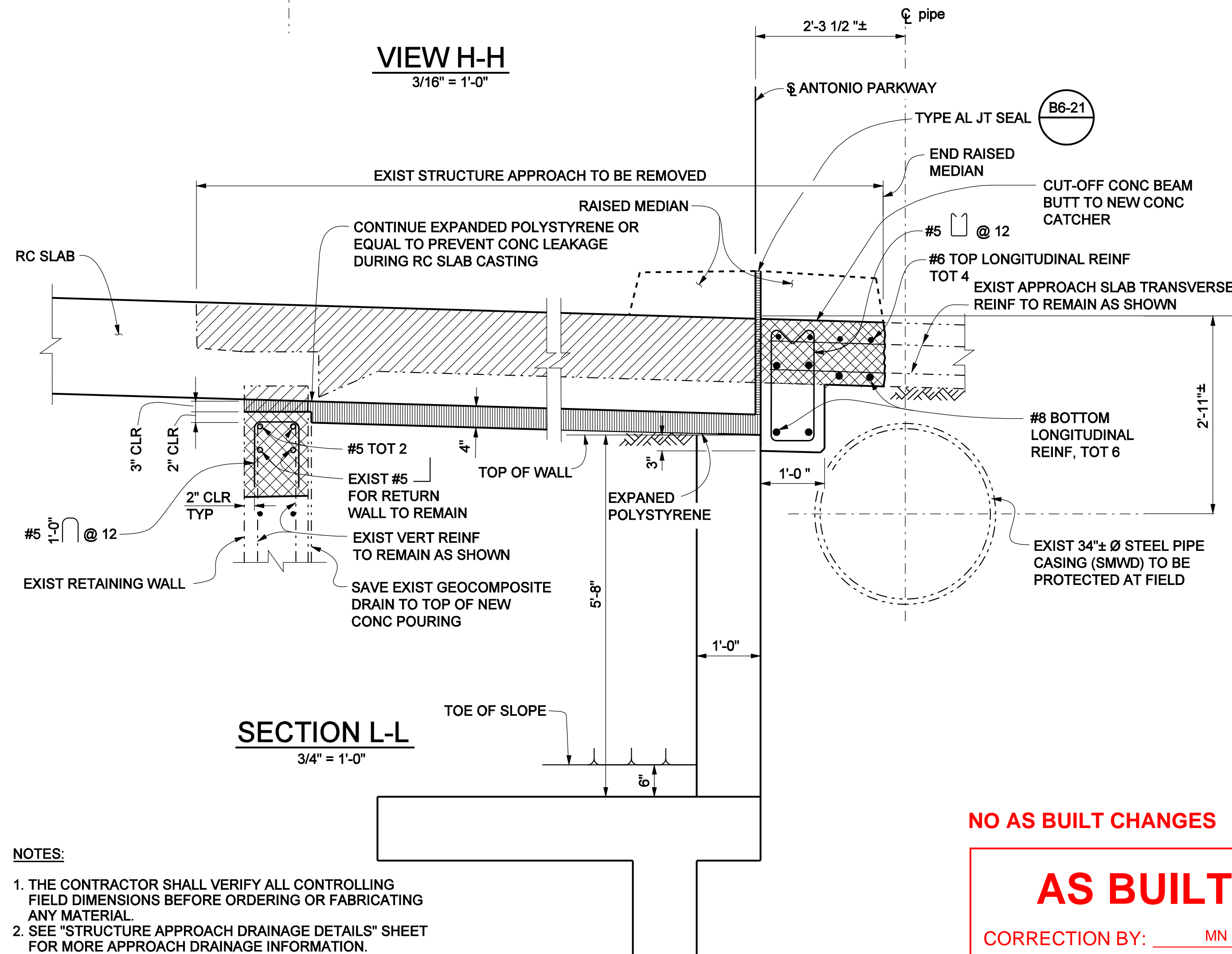
SECTION M-M

3/4" = 1'-0"

SEE SECTION L-L FOR DETAILS NOT SHOWN

VIEW H-H

3/16" = 1'-0"



NOTES:

1. THE CONTRACTOR SHALL VERIFY ALL CONTROLLING FIELD DIMENSIONS BEFORE ORDERING OR FABRICATING ANY MATERIAL.
2. SEE "STRUCTURE APPROACH DRAINAGE DETAILS" SHEET FOR MORE APPROACH DRAINAGE INFORMATION.
3. FOR DECK CHANNEL DRAIN INFORMATION, SEE "DECK DRAIN LAYOUT" SHEET.
4. ALL MATERIAL SHOULD BE HOT DIPPED GALVANIZED BEFORE INSTALLATION

NO AS BUILT CHANGES

AS BUILT

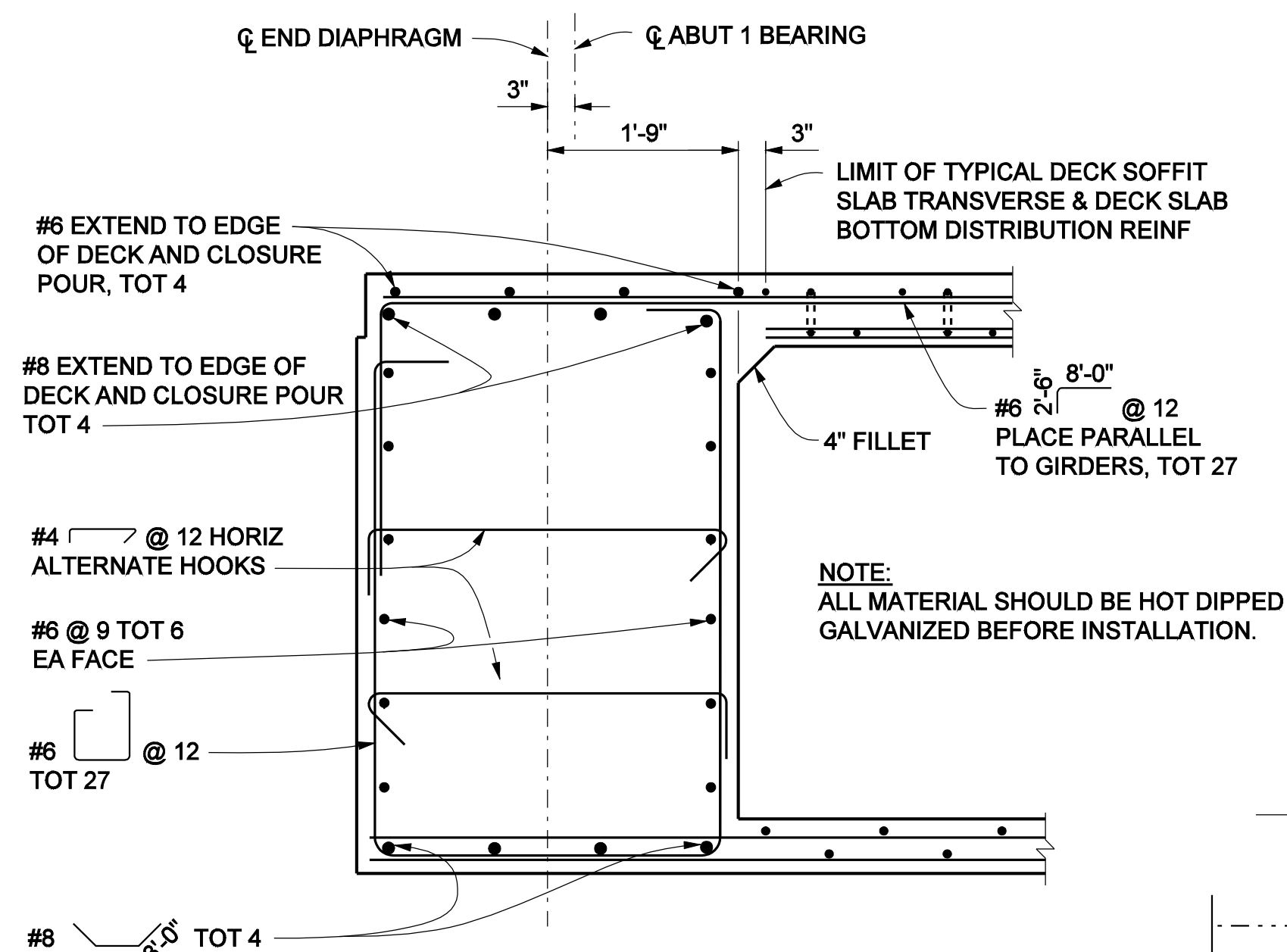
CORRECTION BY: MN

CONTRACT NO.: ER28121

DATE: 12/30/2009

LEGEND

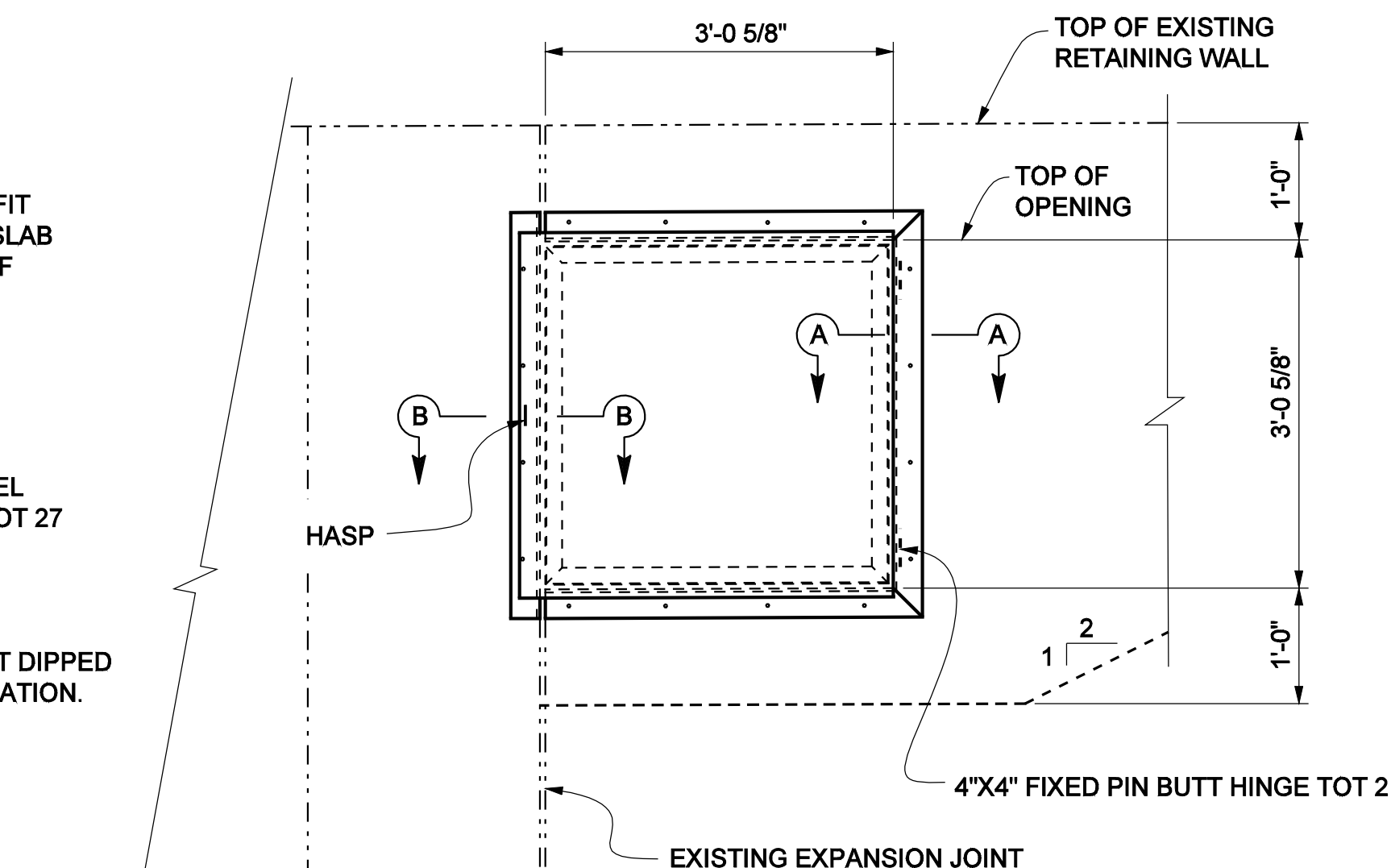
- BRIDGE REMOVAL (PORTION)
- CLOSURE POUR OR NEW CONC WALL
- REMOVE & REPLACE CONCRETE
- EXPANDED POLYSTYRENE
- DENOTES EXISTING STRUCTURE
- DENOTES NEW STRUCTURE



END DIAPHRAGM

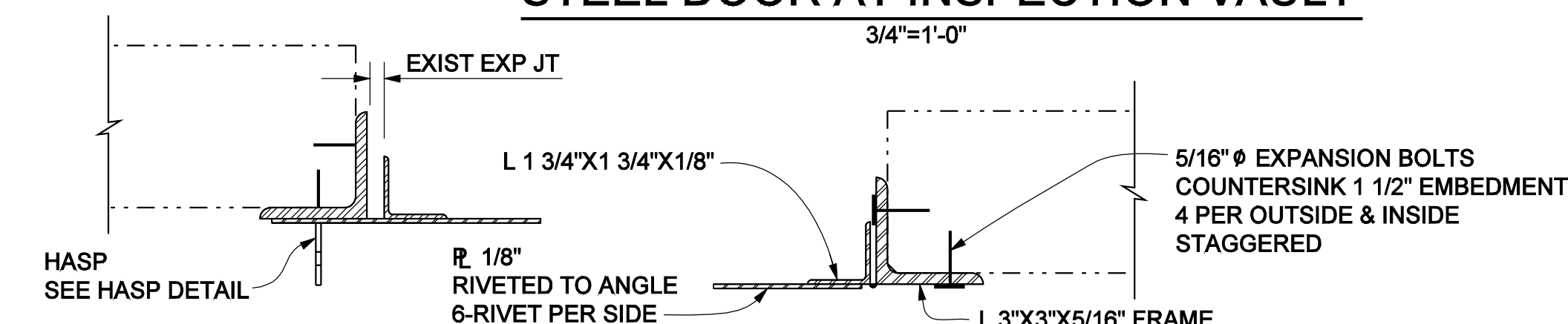
3/4" = 1'-0"

THIS SHEET REPLACES SHEET NO.50 OF 72 OF PLAN APPROVED OCTOBER 2006



STEEL DOOR AT INSPECTION VAULT

3/4"=1'-0"



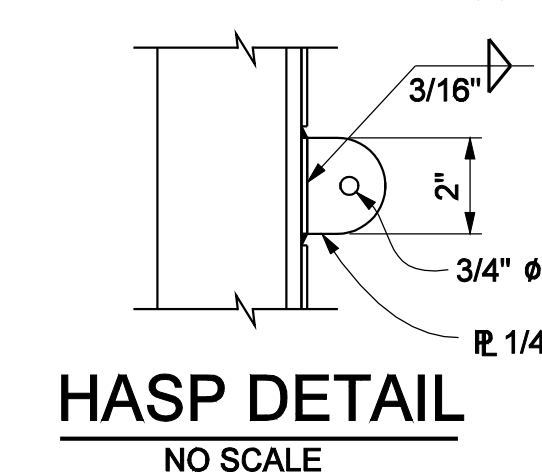
SECTION B-B

NO SCALE

SECTION A-A

NO SCALE

1/2 0 2
3 inches on original drawing



HASP DETAIL

NO SCALE

PLANS PREPARED BY:
HNTB
HNTB Corporation
200 E. SANDPOINTE AVENUE, SUITE 200
SANTA ANA, CALIFORNIA 92707
TEL (714) 460-1600 FAX (714) 460-1610

ORANGE COUNTY RESOURCES & DEVELOPMENT MANAGEMENT DEPT	
ANTONIO PARKWAY WILDLIFE UNDERCROSSING (WIDEN)	
ABUTMENT 1 DETAILS NO. 2	
DESIGNED <u>J. WANG</u>	SHEET
DRAWN <u>N. MORALES</u>	50R1
CHECKED <u>F. JEANG</u>	OF 72
SCALE <u>AS SHOWN</u>	DATE <u>9/19/08</u>
DRAWING NO.	

1/07	ELIMINATED RET WALL HEEL
MARK	DATE
REVISIONS	
PREPARED UNDER RESPONSIBLE CHARGE OF:	
Yung-Nien Wang	DATE
RCE C 43559 (EXP. 6-30-08)	

Date Plotted:

File Name: J:\34092\CADD\Strcsheets\antoniopkwy-S-09R1.dgn

Border sheet last modified 09-Nov-1999