

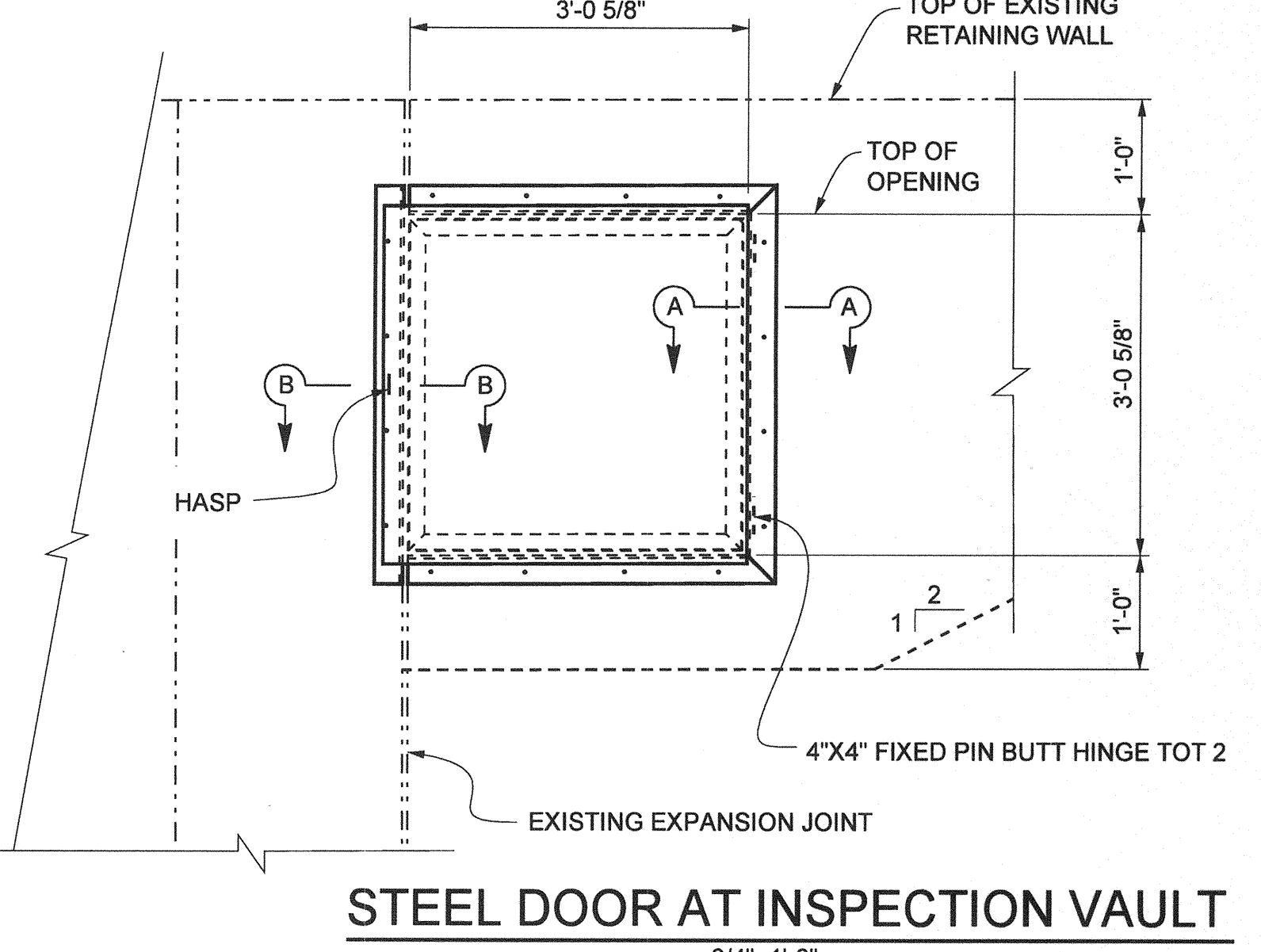
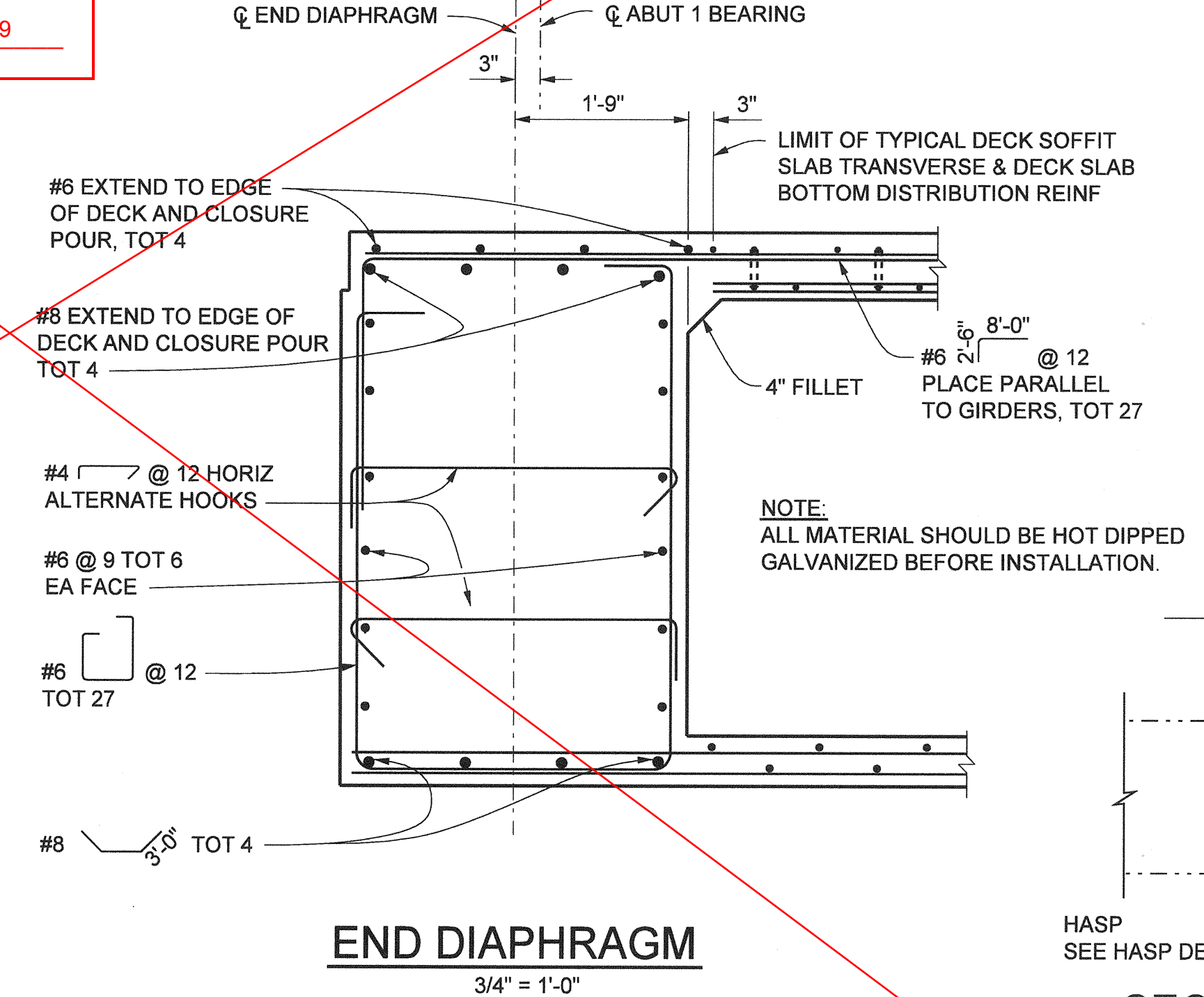
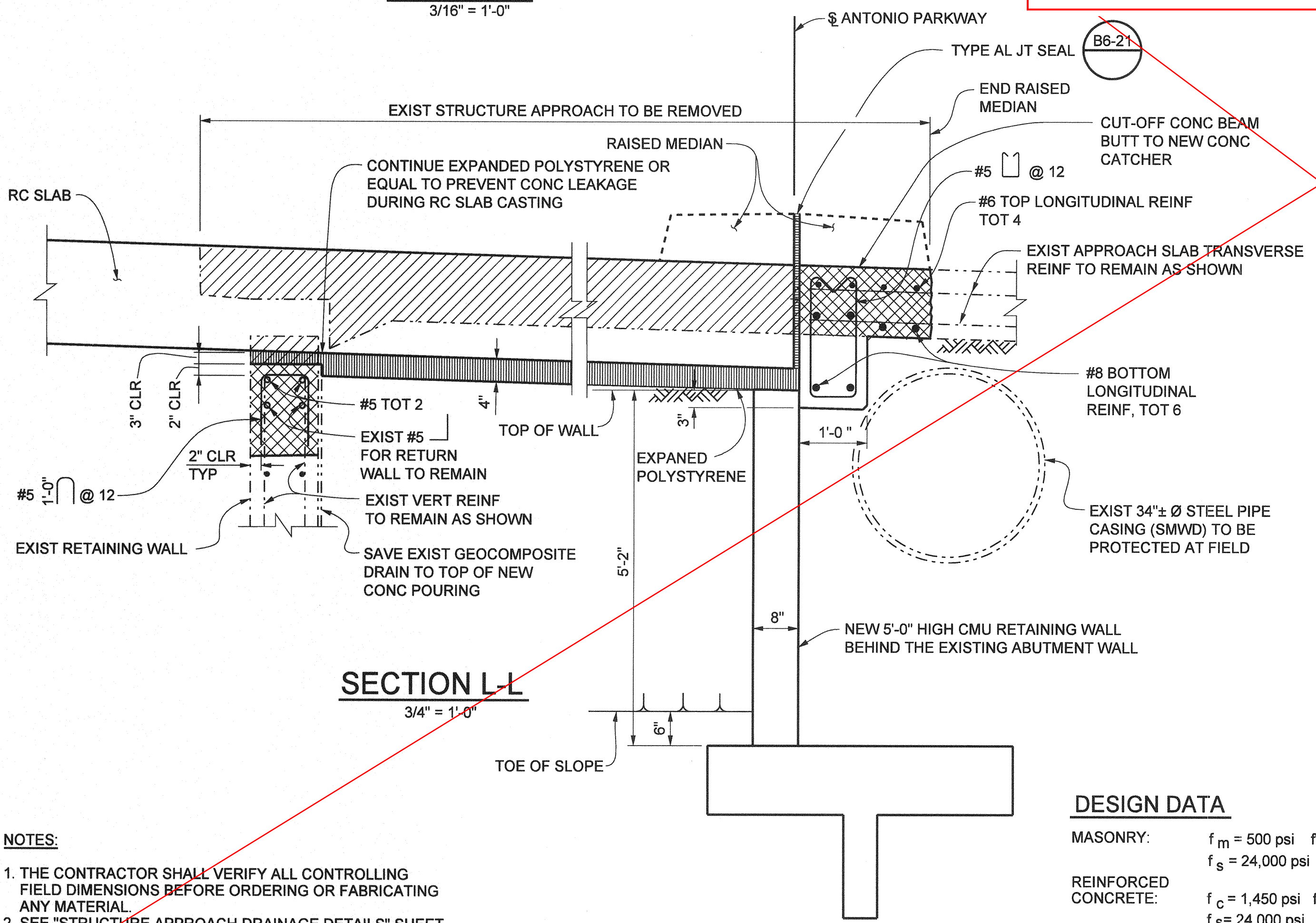
**THIS SHEET WAS  
REPLACED BY SHEET  
50R1 OF 72.**

**AS BUILT**

CORRECTION BY:       MN      

CONTRACT NO.:       ER28121      

DATE:       12/30/2009      



- NOTES:**
1. THE CONTRACTOR SHALL VERIFY ALL CONTROLLING FIELD DIMENSIONS BEFORE ORDERING OR FABRICATING ANY MATERIAL.
  2. SEE "STRUCTURE APPROACH DRAINAGE DETAILS" SHEET FOR MORE APPROACH DRAINAGE INFORMATION.
  3. FOR DECK CHANNEL DRAIN INFORMATION, SEE "DECK DRAIN LAYOUT" SHEET.
  4. ALL MATERIAL SHOULD BE HOT DIPPED GALVANIZED BEFORE INSTALLATION.

**DESIGN DATA**

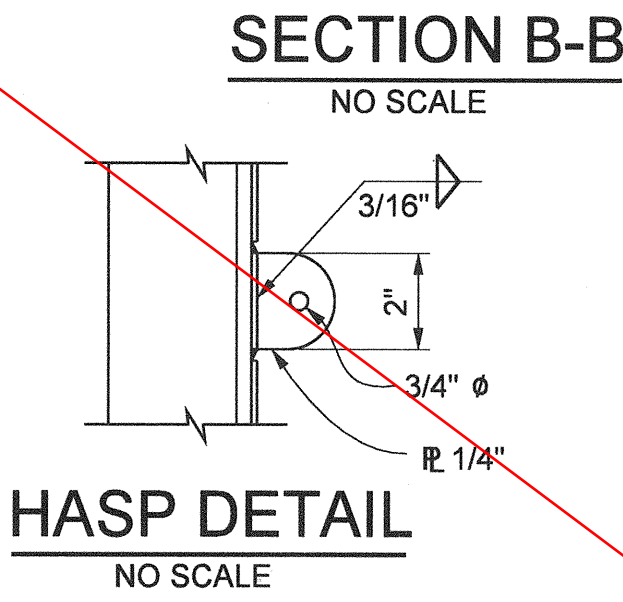
MASONRY:  $f_m = 500 \text{ psi}$   $f_m = 1,500 \text{ psi}$   
 $f_s = 24,000 \text{ psi}$   $n = 20$

REINFORCED CONCRETE:  $f_c = 1,450 \text{ psi}$   $f_c = 3,600 \text{ psi}$   
 $f_s = 24,000 \text{ psi}$   $n = 10$

EARTH = 120 lb/cf  
 SURCHARGE 3'-6" EQUIVALENT SOIL HEIGHT.

MINIMUM ALLOCABLE SOIL BEARING CAPACITY OF FOUNDATION MATERIAL = 2.0 k/sf

- LEGEND**
- BRIDGE REMOVAL (PORTION)
  - CLOSURE POUR OR NEW CONC WALL
  - REMOVE & REPLACE CONCRETE
  - EXPANDED POLYSTYRENE
  - DENOTES EXISTING STRUCTURE
  - DENOTES NEW STRUCTURE



ORANGE COUNTY RESOURCES & DEVELOPMENT MANAGEMENT DEPT	
ANTONIO PARKWAY WILDLIFE UNDERCROSSING (WIDEN)	
ABUTMENT 1 DETAILS NO. 2	
DESIGNED: <u>      J. WANG      </u>	SHEET <b>50</b>
DRAWN: <u>      N. MORANES      </u>	OF 72
CHECKED: <u>      F. JEANG      </u>	
SCALE: <u>      AS SHOWN      </u>	
DATE: <u>      9/19/08      </u>	
DRAWING NO.:	

PLANS PREPARED BY: **HNTB** Corporation  
 200 E. SANDPOINT AVENUE, SUITE 200  
 SANTA ANA, CALIFORNIA 92707  
 TEL (714) 460-1600 FAX (714) 460-1610

Yung-Nien Wang  
 RCE C 43559 (EXP. 6-30-06)

DATE:       12/31/06      

Date Plotted:

File Name: J:\34092\CADD\Struct\sheet\antoniopkwy-S-08.dgn

Border sheet last modified 09-Nov-1999