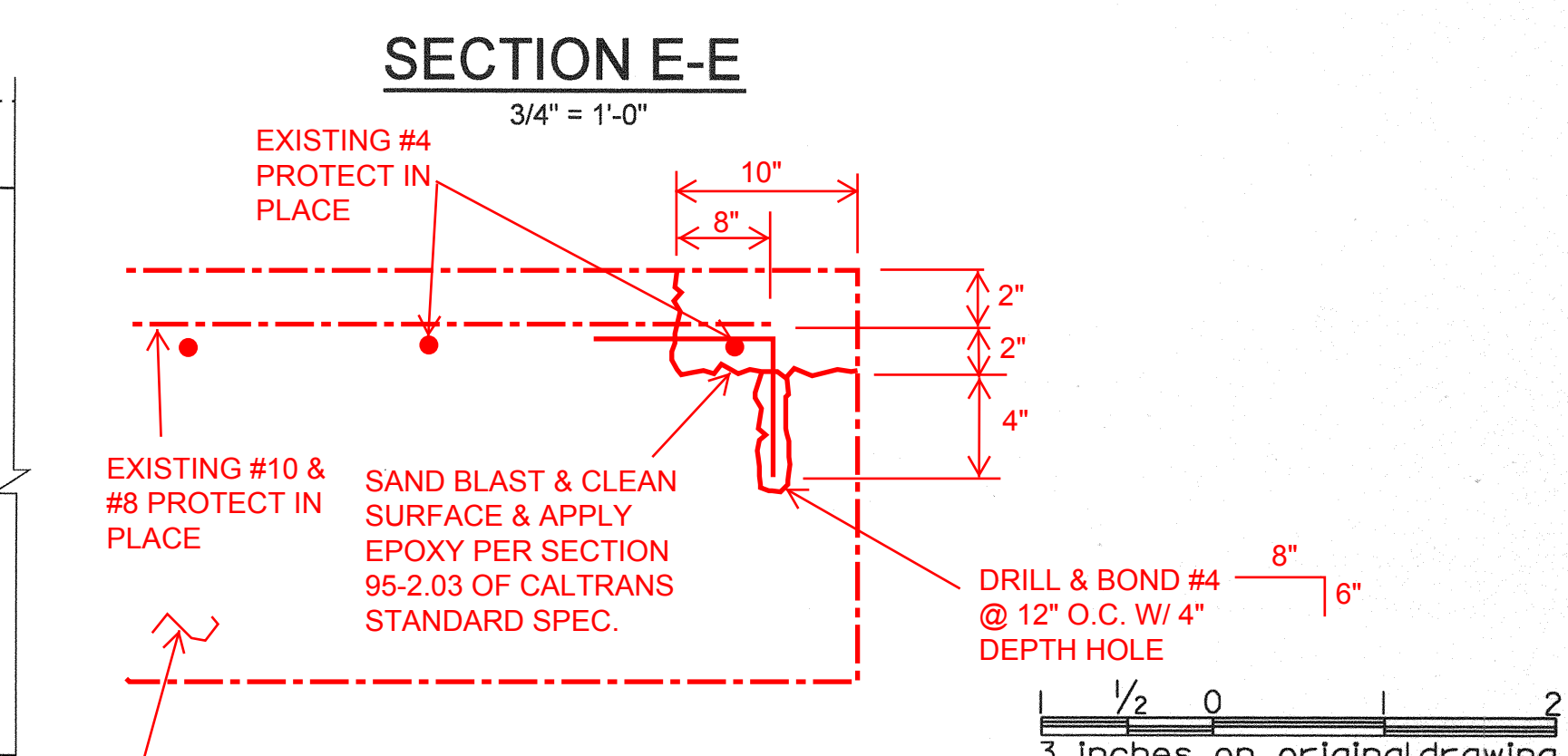
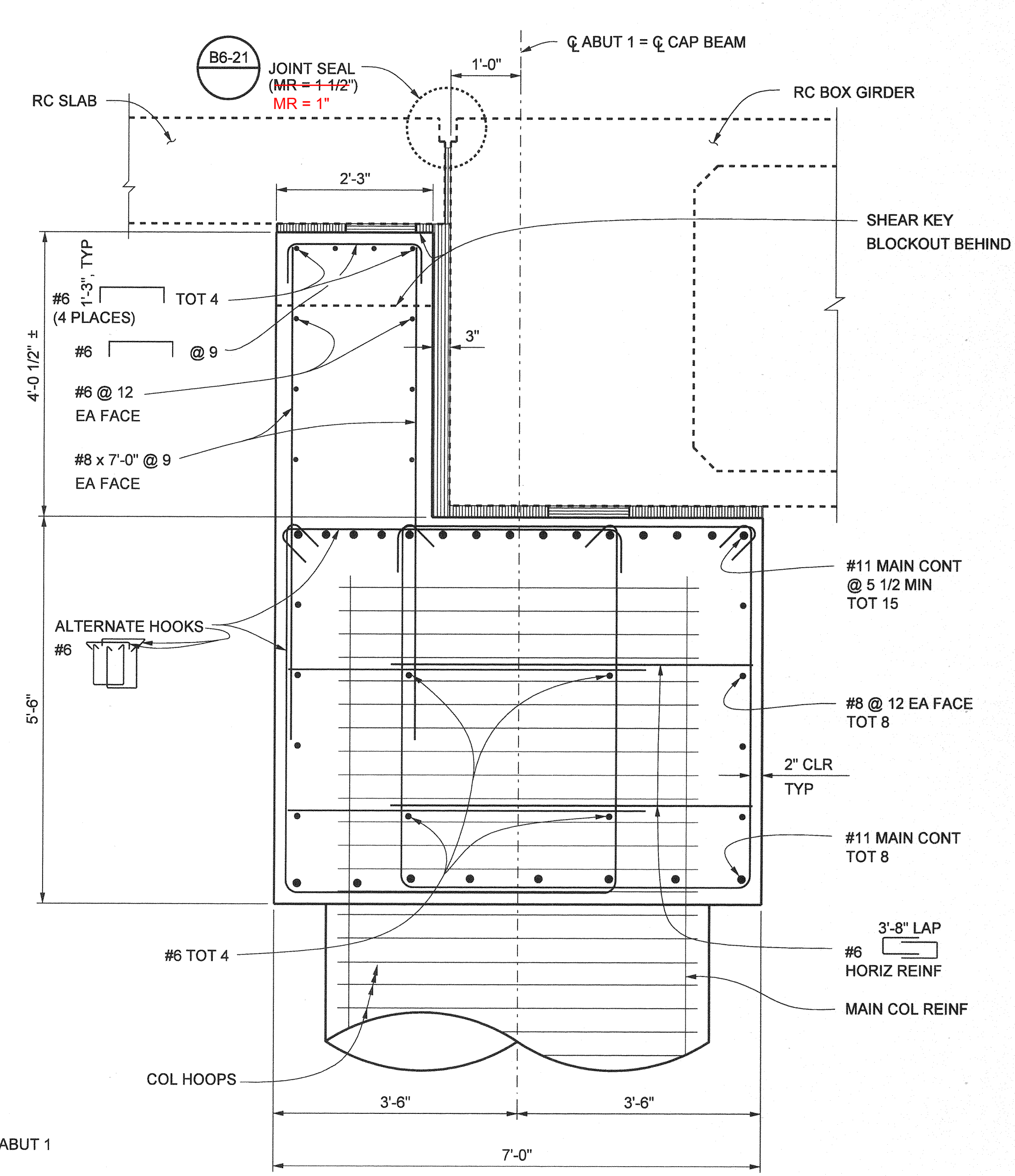
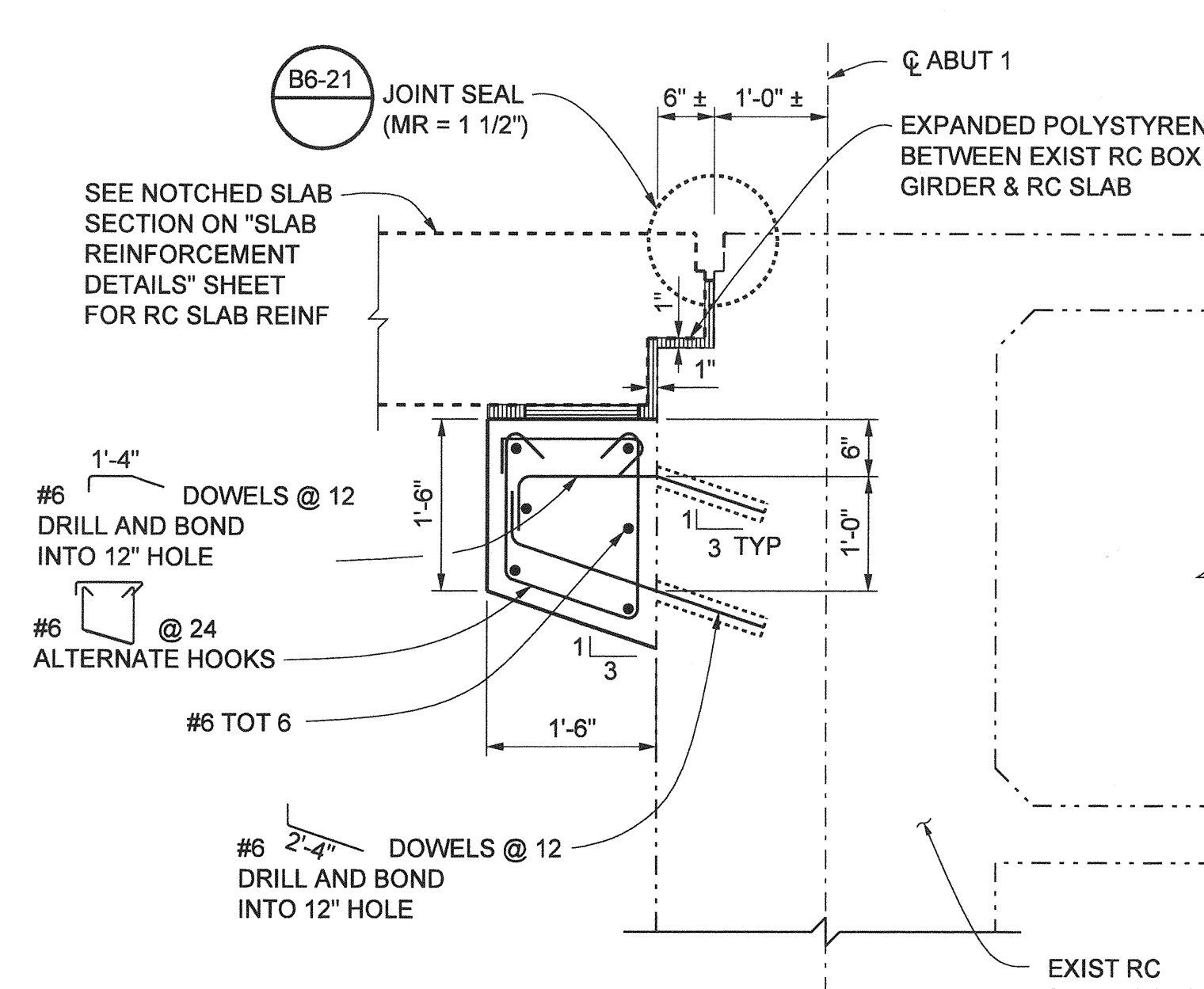


AS BUILT

CORRECTION BY: MN

CONTRACT NO.: ER28121

DATE: 12/30/2009



- NOTES:**
1. THE CONTRACTOR SHALL VERIFY ALL CONTROLLING FIELD DIMENSIONS BEFORE ORDERING OR FABRICATING ANY MATERIAL.
 2. FOR SECTION G-G AND VIEW H-H, SEE "ABUTMENT 1 DETAILS NO. 1 & NO. 2" SHEETS.
 3. NO SPLICE ALLOWED IN MAIN BENT CAP REINF.
 4. FOR UTILITY SIZE AND LOCATION, SEE "TYPICAL SECTION" SHEET.

- LEGEND**
- BRIDGE REMOVAL (PORTION)
 - CLOSURE POUR
 - DENOTES EXISTING STRUCTURE
 - DENOTES NEW STRUCTURE

ORANGE COUNTY RESOURCES & DEVELOPMENT MANAGEMENT DEPT		ANTONIO PARKWAY WILDLIFE UNDERCROSSING (WIDEN)		ABUTMENT 1 LAYOUT	
MARK	DATE	DESCRIPTION			
REVISIONS					
PREPARED UNDER RESPONSIBLE CHARGE OF:					
DESIGNED	J. WANG	CHECKED	F. JIANG	SHEET	
DRAWN	L. ZHANG	DATE			48
SCALE	AS SHOWN	DATE	9/19/08	DRAWING NO.	OF 72

PLANS PREPARED BY:

HNTB

HNTB Corporation
200 E. SANDPOINTE AVENUE, SUITE 200
SANTA ANA, CALIFORNIA 92707
TEL (714) 460-1600 FAX (714) 460-1610