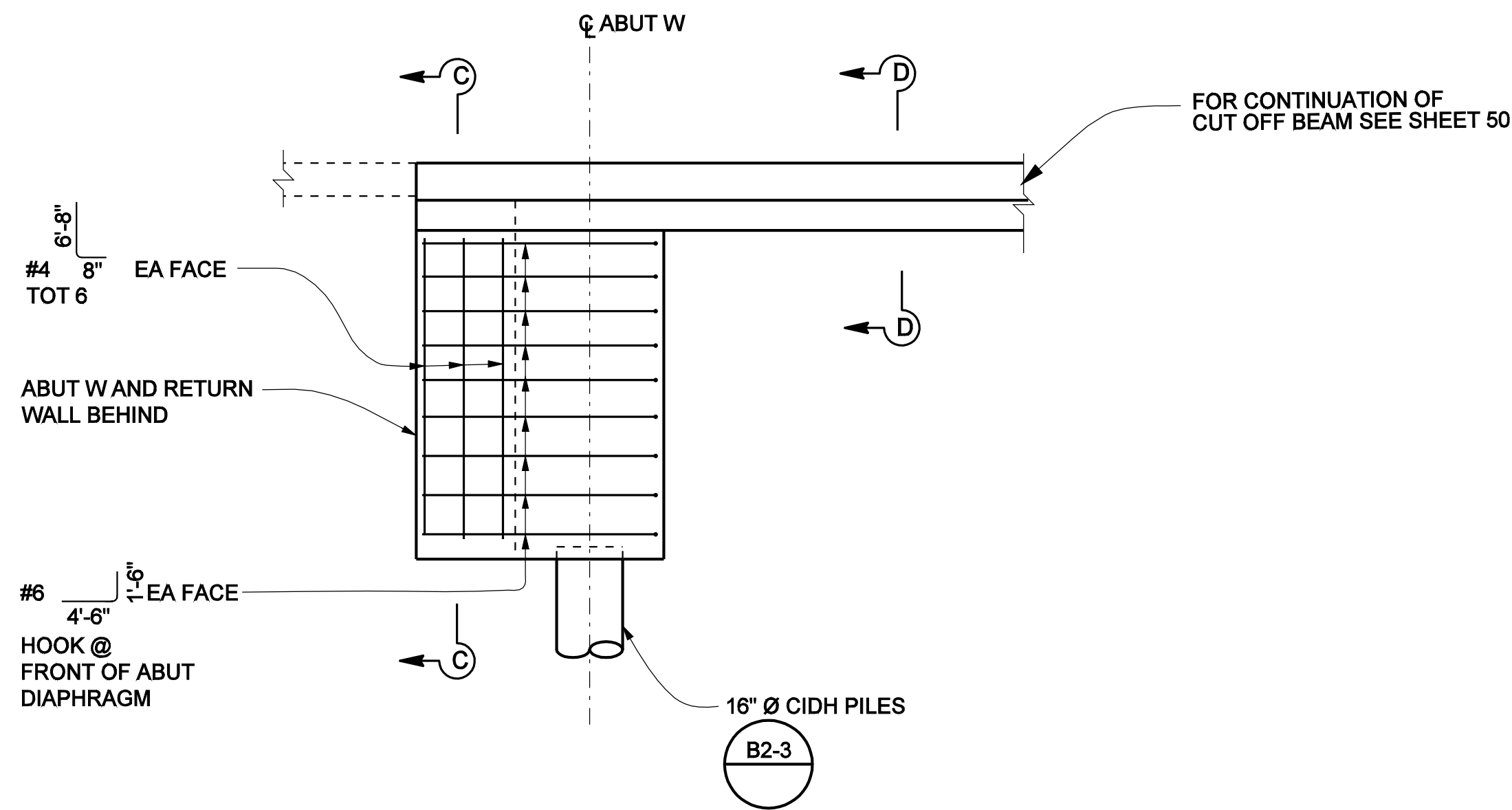
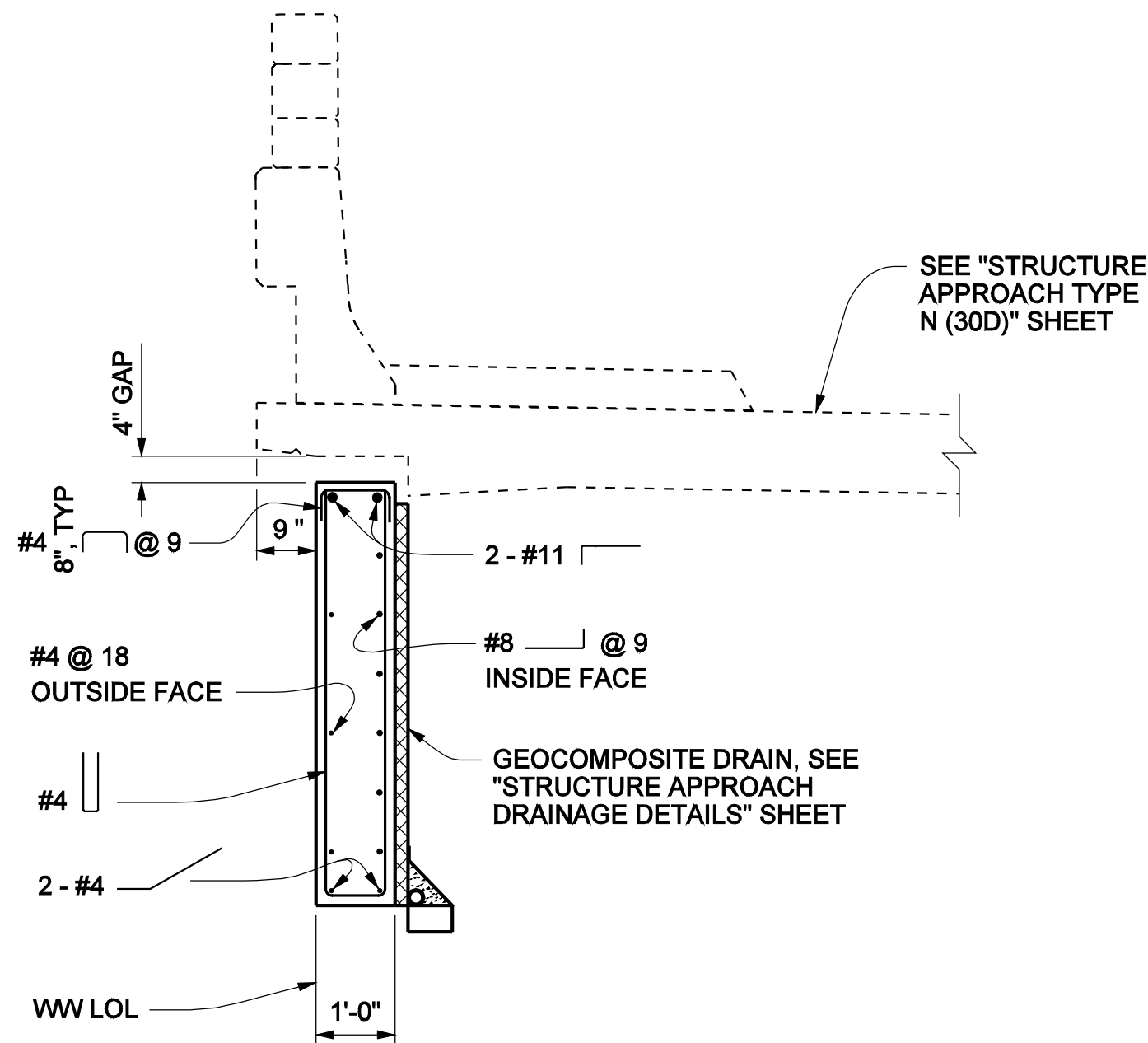


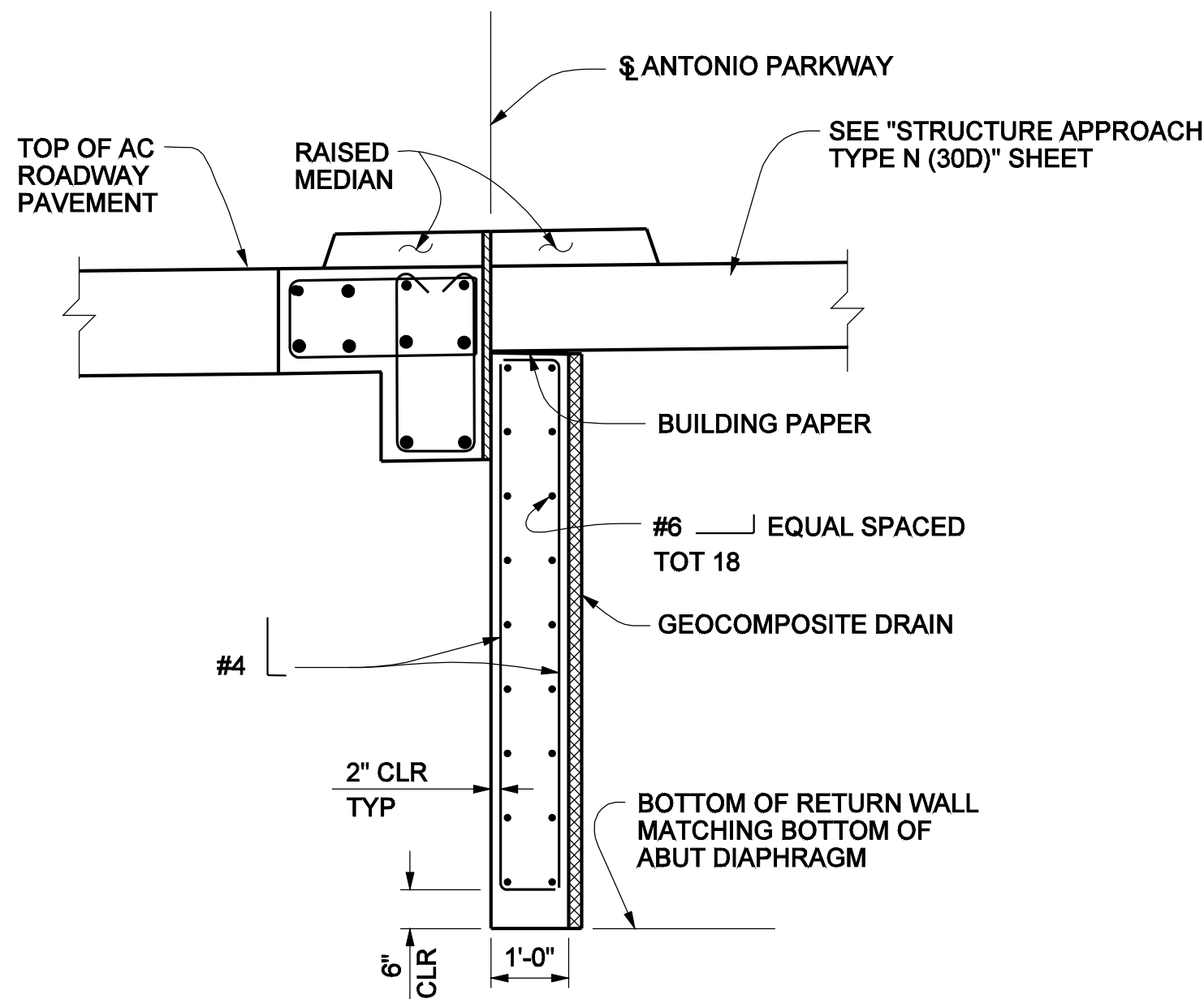
WINGWALL ELEVATION  
3/8" = 1'-0"



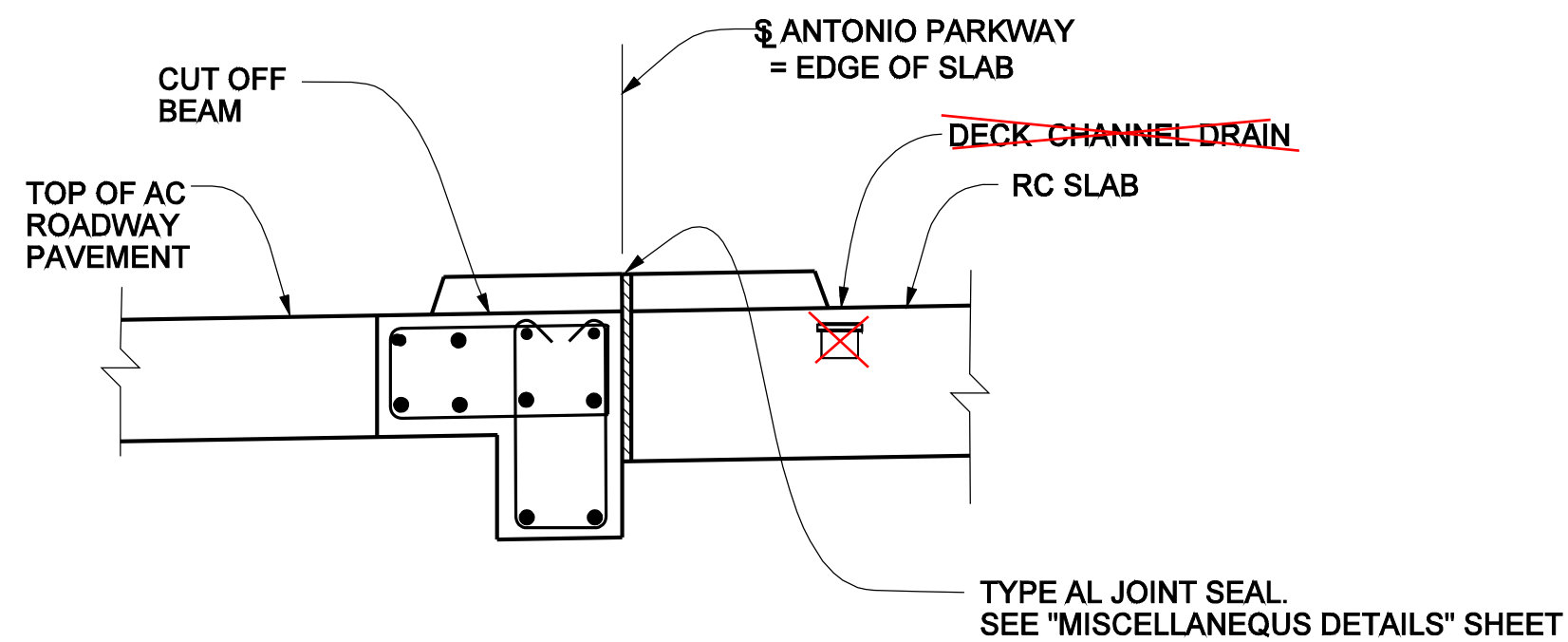
RETURN WALL ELEVATION



SECTION B-B  
1/2" = 1'-0"



SECTION C-C  
1/2" = 1'-0"



SECTION D-D  
1/2" = 1'-0"

THIS SHEET REPLACES SHEET NO.46  
OF 72 OF PLAN APPROVED OCTOBER 2006



NOTES:

1. THE CONTRACTORS SHALL VERIFY ALL CONTROLLING FIELD DIMENSIONS BEFORE ORDERING OR FABRICATING ANY MATERIAL.
2. FOR DECK CHANNEL DRAIN INFORMATION, SEE "DECK DRAIN LAYOUT" SHEET.

**AS BUILT**  
CORRECTION BY: MN  
CONTRACT NO.: ER28121  
DATE: 12/30/2009

PLANS PREPARED BY: **HNTB**  
HNTB Corporation  
200 E. SANDPOINTE AVENUE, SUITE 200  
SANTA ANA, CALIFORNIA 92707  
TEL. (714) 460-1600 FAX (714) 460-1610

		ORANGE COUNTY RESOURCES & DEVELOPMENT MANAGEMENT DEPT	
		ANTONIO PARKWAY WILDLIFE UNDERCROSSING (WIDEN)	
ABUTMENT W DETAILS		DESIGNED <u>J. WANG</u>	SHEET
DRAWN <u>AA. WANG</u>		CHECKED <u>F. JEANG</u>	46R1
SCALE AS SHOWN	DATE 9/19/06	DRAWING NO.	OF 72

PREPARED UNDER RESPONSIBLE CHARGE OF:  
Yung-Nien Wang  
RCE C 43559 (EXP. 6-30-06)

REVISIONS  
MARK DATE DESCRIPTION  
1/07 DELETED MEDIAN SUPPORT WALL. EXTENDED CUT OFF BEAM

Date Plotted: File Name: J:\34092\CADD\Strcsheets\antoniopkwy-S-06R1.dgn