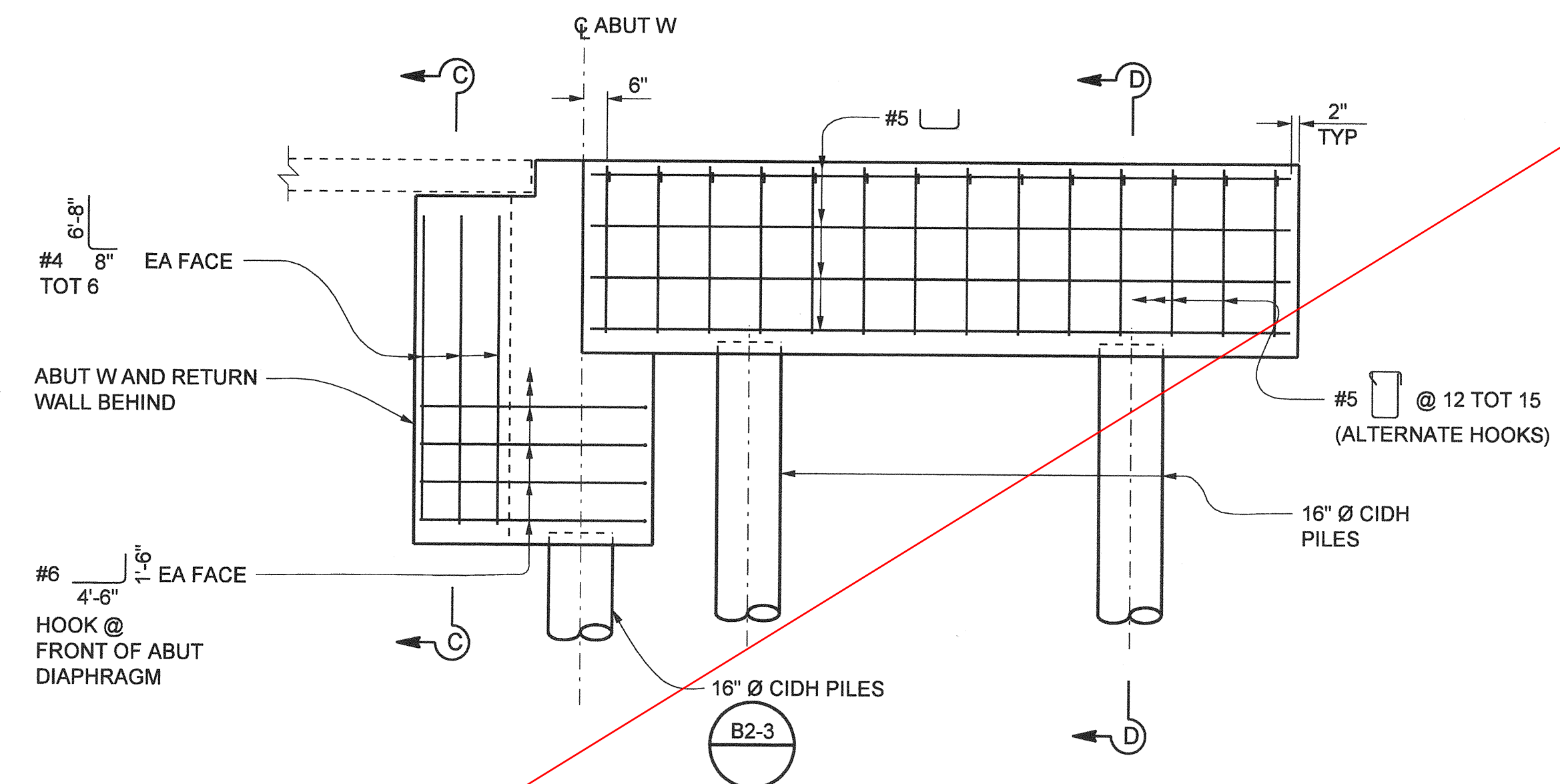


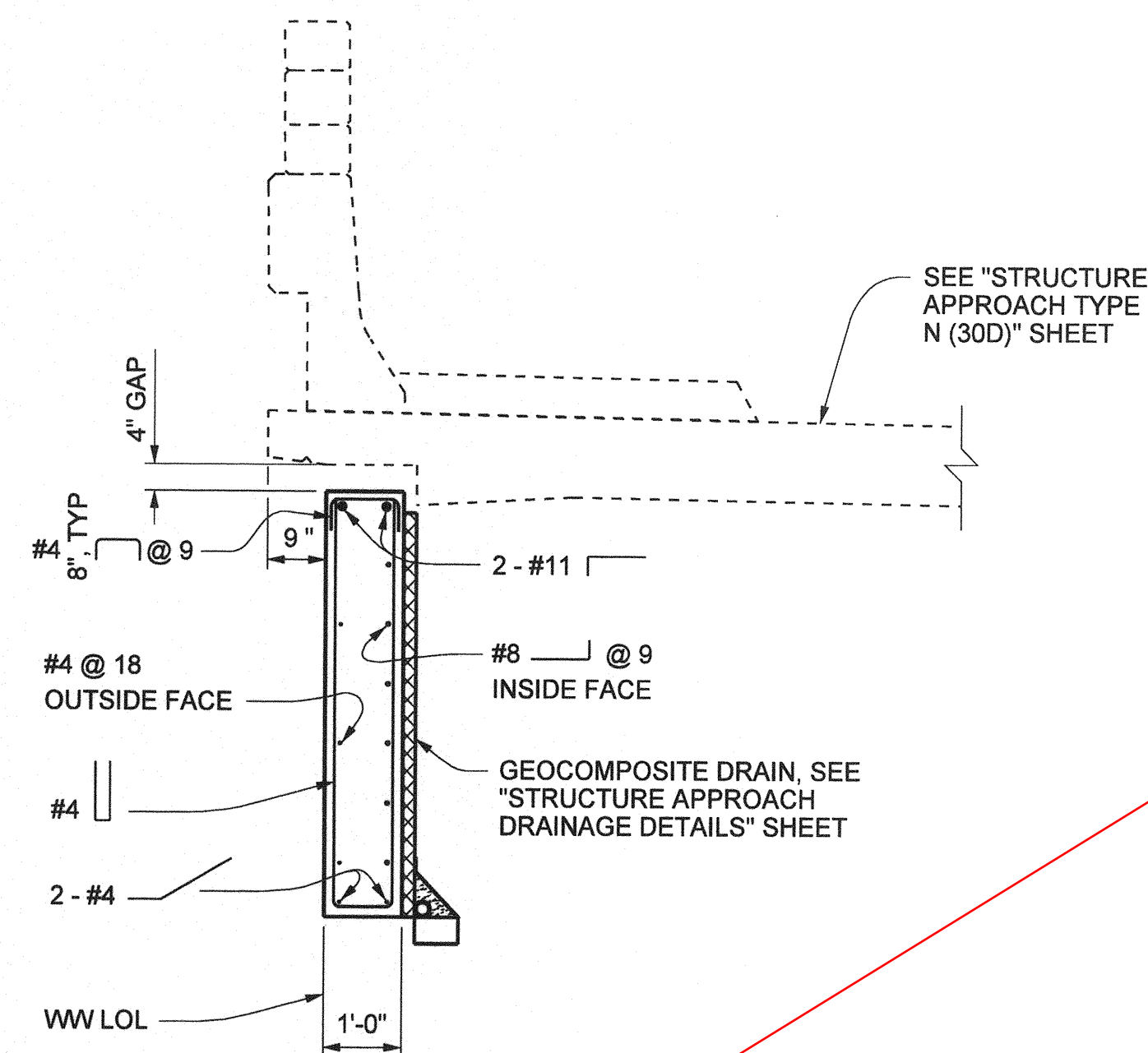
WINGWALL ELEVATION

3/8" = 1'-0"



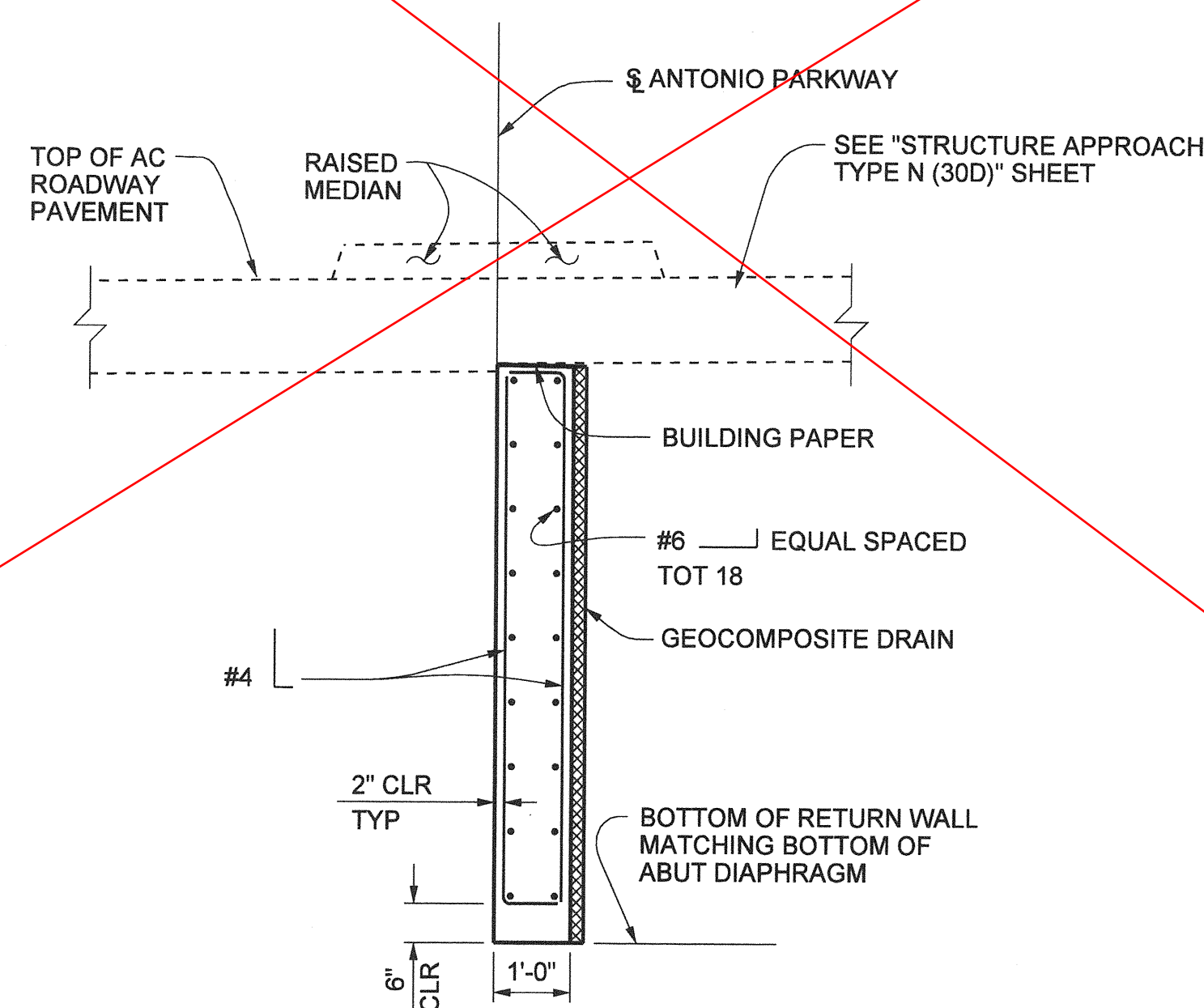
MEDIAN SUPPORT ELEVATION

3/8" = 1'-0"



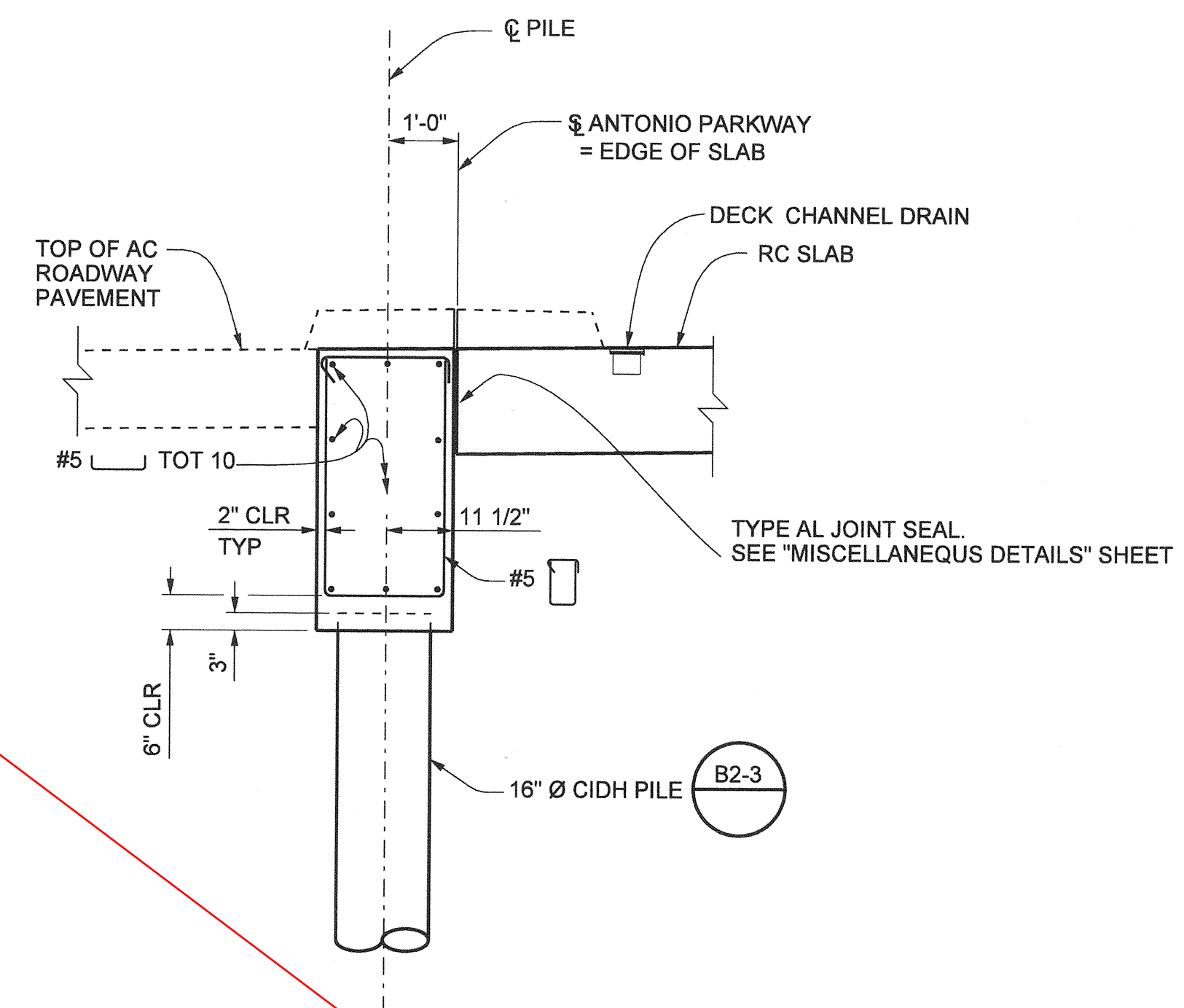
SECTION B-B

1/2" = 1'-0"



SECTION C-C

1/2" = 1'-0"



SECTION D-D

1/2" = 1'-0"

AS BUILT

CORRECTION BY: MN
CONTRACT NO.: ER28121
DATE: 12/30/2009

1/2 0 2
3 inches on original drawing

NOTES:

1. THE CONTRACTORS SHALL VERIFY ALL CONTROLLING FIELD DIMENSIONS BEFORE ORDERING OR FABRICATING ANY MATERIAL.
2. FOR DECK CHANNEL DRAIN INFORMATION, SEE "DECK DRAIN LAYOUT" SHEET.

THIS SHEET WAS REPLACED BY SHEET 46R1 OF 72.

PLANS PREPARED BY:
HNTB
HNTB Corporation
200 E. SANDPOINTE AVENUE, SUITE 200
SANTA ANA, CALIFORNIA 92707
TEL (714) 460-1600 FAX (714) 460-1610

ORANGE COUNTY RESOURCES & DEVELOPMENT MANAGEMENT DEPT		ANTONIO PARKWAY WILDLIFE UNDERCROSSING (WIDEN)		ABUTMENT W DETAILS	
MARK	DATE	REVISIONS			
PREPARED UNDER RESPONSIBLE CHARGE OF:					
<div style="display: flex; justify-content: space-between;"> <div> <p>DESIGNED: <u>J. WANG</u></p> <p>DRAWN: <u>J. WANG</u></p> <p>SCALE: <u>AS SHOWN</u></p> </div> <div> <p>CHECKED: <u>E. JEANG</u></p> <p>DATE: <u>9/19/06</u></p> </div> <div> <p>DATE: <u>10/31/06</u></p> </div> </div>					
SHEET					46
OF 72					

Date Plotted:

File Name: J:\34082\CADD\Structs\Antoniopkwy-S-06.dgn

Border sheet last modified 05-Nov-1999