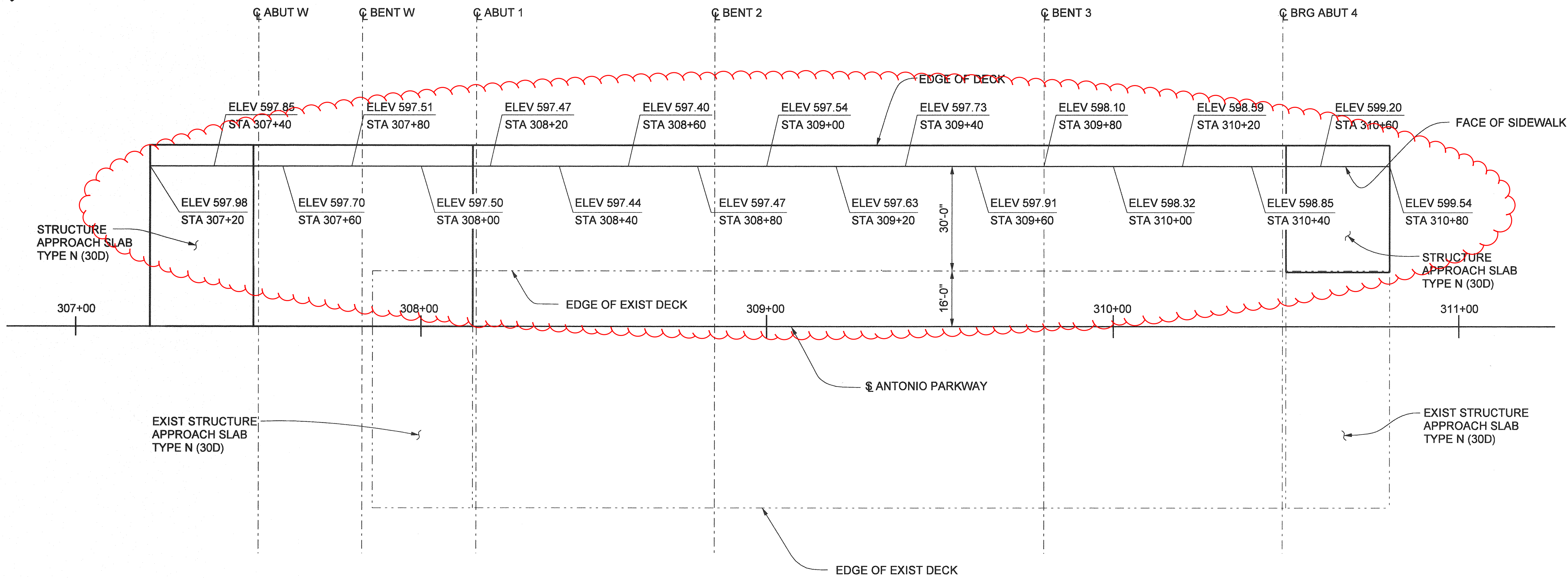


CALTRANS STANDARD PLANS (DUAL UNITS)
DATED JULY 2002

| | |
|--------|---|
| A10A | ABBREVIATIONS |
| A10B | SYMBOLS |
| A62C | LIMITS OF PAVEMENT FOR EXCAVATION AND BACKFILL - BRIDGE |
| B0-1 | BRIDGE DETAILS |
| B0-3 | BRIDGE DETAILS |
| B0-5 | BRIDGE DETAILS |
| B0-13 | BRIDGE DETAILS |
| B2-3 | 16" CAST-IN-DRILLED-HOLE CONCRETE PILE |
| B6-21 | JOINT SEALS (MAXIMUM MOVEMENT RATING = 2") |
| B7-1 | BOX GIRDER DETAILS |
| B7-6 | DECK DRAINS - TYPE D-1 AND D-2 |
| B7-10 | UTILITY OPENING - BOX GIRDER |
| B11-53 | CONCRETE BARRIER TYPE 25 |
| B14-5 | WATER SUPPLY LINE (BRIDGE) |
| | (PIPE SIZES LESS THAN NPS 4) |
| ES-6A | LIGHTING STANDARDS TYPES 15, 21 AND 22 |
| ES-6B | LIGHTING STANDARDS TYPES 15 AND 21 |
| ES-9E | BARRIER RAIL MOUNTED DETAILS |
| | SIGNAL, LIGHTING AND ELECTRICAL SYSTEMS |
| | ELECTRICAL DETAILS |
| | STRUCTURE INSTALLATION |

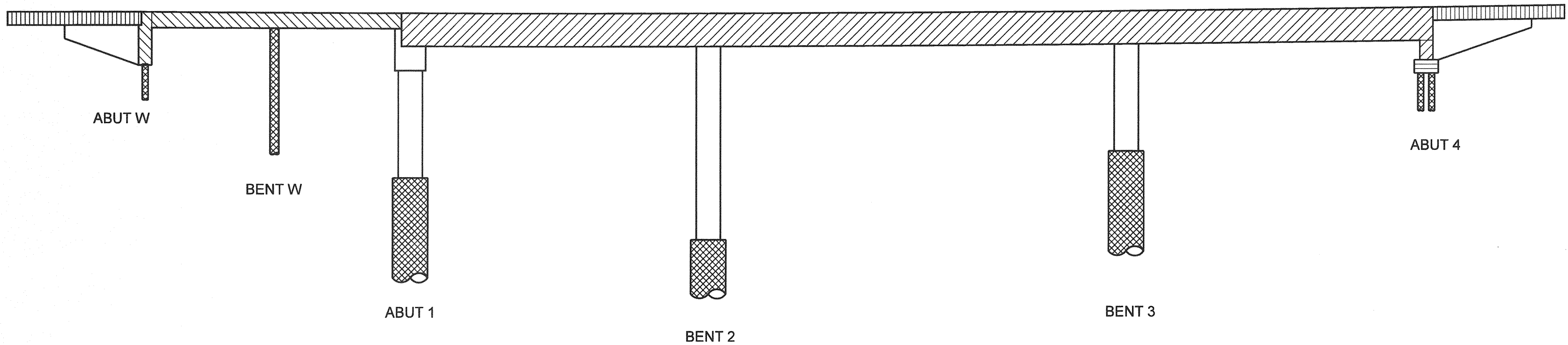
GENERAL NOTES
LOAD FACTOR DESIGN

| | |
|----------------------|--|
| DESIGN: | CALTRANS BRIDGE DESIGN SPECIFICATIONS APRIL 2000 (LFD) (1996 AASHTO WITH INTERIMS AND REVISIONS BY CALTRANS) |
| SEISMIC DESIGN: | CALTRANS SEISMIC DESIGN CRITERIA (SDC) VERSION 1.2 DECEMBER 2001 |
| DEAD LOAD: | INCLUDES 35 psf FOR FUTURE WEARING SURFACE |
| LIVE LOADING: | HS20-44 AND ALTERNATIVE AND PERMIT DESIGN LOAD |
| SEISMIC LOADING: | SDC ARS CURVE FOR SOIL PROFILE C (M = 7.25 ± .25) (PEAK ROCK ACCELERATION = 0.3g) |
| REINFORCED CONCRETE: | f _y = 60,000 psi f _c = 3,600 psi, UNLESS OTHERWISE NOTED 3600 TRANSVERSE DECK SLAB (WORKING STRESS DESIGN) f _s = 20,000 psi f _c = 1,200 psi n = 10 |



SEE BRIDGE 43S FOR DECK
ELEVATIONS

PLAN
1" = 20'



CONCRETE STRENGTH AND TYPE LIMITS
NO SCALE

LEGEND

| | |
|--|---|
| | STRUCTURAL CONCRETE - BRIDGE (4500 psi @ 28 DAYS) |
| | STRUCTURAL CONCRETE - BRIDGE (4000 psi @ 28 DAYS) |
| | STRUCTURAL CONCRETE - BRIDGE |
| | STRUCTURAL CONCRETE - BRIDGE FOOTING |
| | STRUCTURAL CONCRETE - APPROACH SLAB TYPE N (30D) |
| | 16", 24" OR 7'-0" CIDH CONCRETE PILE (4000 psi @ 28 DAYS) |

NOTES:

1. THE CONTRACTOR SHALL VERIFY ALL CONTROLLING FIELD DIMENSIONS BEFORE ORDERING OR FABRICATING ANY MATERIAL.
2. DECK ELEVATIONS GIVEN ARE ON THE TOP OF FINISHED SURFACE AT THE FACE OF SIDEWALK FOR THE WIDENING TO MATCH EXISTING GRADE AND CROSS SLOPE.

AS BUILT

CORRECTION BY: MN
CONTRACT NO.: ER28121
DATE: 12/30/2009

PLANS PREPARED BY:
HNTB
HNTB Corporation
200 E. SANDPOINTE AVENUE, SUITE 200
SANTA ANA, CALIFORNIA 92707
TEL (714) 460-1600 FAX (714) 460-1610

| | |
|--|---------------|
| ORANGE COUNTY RESOURCES & DEVELOPMENT MANAGEMENT DEPT | |
| ANTONIO PARKWAY WILDLIFE UNDERCROSSING (WIDEN) | |
| DECK ELEVATIONS | |
| DESIGNED: J. ZHANG | SHEET |
| DRAWN: J. ZHANG | 43 |
| CHECKED: F. JEANG | OF 72 |
| SCALE: AS SHOWN | DATE: 9/19/08 |
| DRAWING NO. | |

REVISIONS

| MARK | DATE | DESCRIPTION |
|------|------|-------------|
| | | |

PREPARED UNDER RESPONSIBLE CHARGE OF:

Yong-Nien Wang
NO. C 43559
EXP. 6-30-08
CIVIL
DATE 10/31/06

Date Plotted: File Name: J:\34092\CADD\Strcsheets\antoniopkwy-S-02.dgn