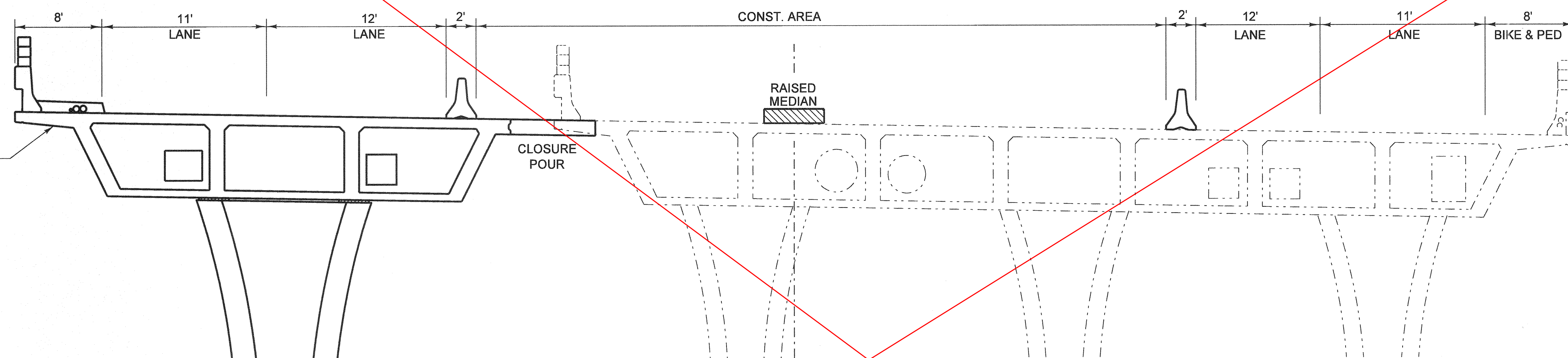


TYPICAL SECTION - PHASE I

1" = 5'

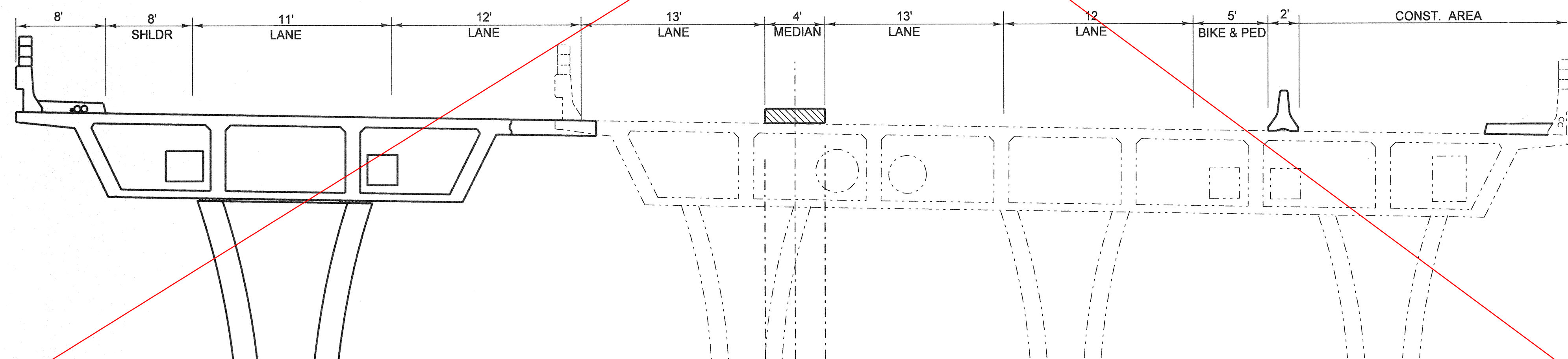
NOTE:

FOR PLACEMENT OF CLOSURE POUR, SEE SHEET 68
"TYPICAL SECTION".



TYPICAL SECTION - PHASE II

1" = 5'



TYPICAL SECTION - PHASE III

1" = 5'

THIS SHEET WAS REPLACED BY SHEET
23R OF 72.

AS BUILT

CORRECTION BY: MN
CONTRACT NO.: ER28121
DATE: 12/30/2009

PLANS PREPARED BY:
HNTB
HNTB Corporation
200 E. SANDPOINTE AVENUE, SUITE 200
SANTA ANA, CALIFORNIA 92707
TEL (714) 460-1600 FAX (714) 460-1610

PLAN 1" = 5'		ORANGE COUNTY RESOURCES & DEVELOPMENT MANAGEMENT DEPT	
		ANTONIO PARKWAY WILDLIFE IMPROVEMENT PLANS	
		STAGE CONSTRUCTION TRAFFIC CONTROL PLAN SECTIONS SC-1	
DESIGNED: R. NIERE		SHEET 23 OF 72	
DRAWN: N. BUNIA		CHECKED: S. STROH	
SCALE: AS SHOWN		DATE: NOV. 18, 2005	
DATE: 11/18/05		DRAWING NO.	

MARK	DATE	DESCRIPTION
REVISIONS		
PREPARED UNDER RESPONSIBLE CHARGE OF:		
STEVEN B. STROH RCE C 59687 (EXP. 12-31-07)		

Date Plotted: 20 October, 2006 05:38

File Name: J:\34092\CADD\Hwy\Sheets\SC1a.dgn

Border sheet last modified 02-Nov-1999