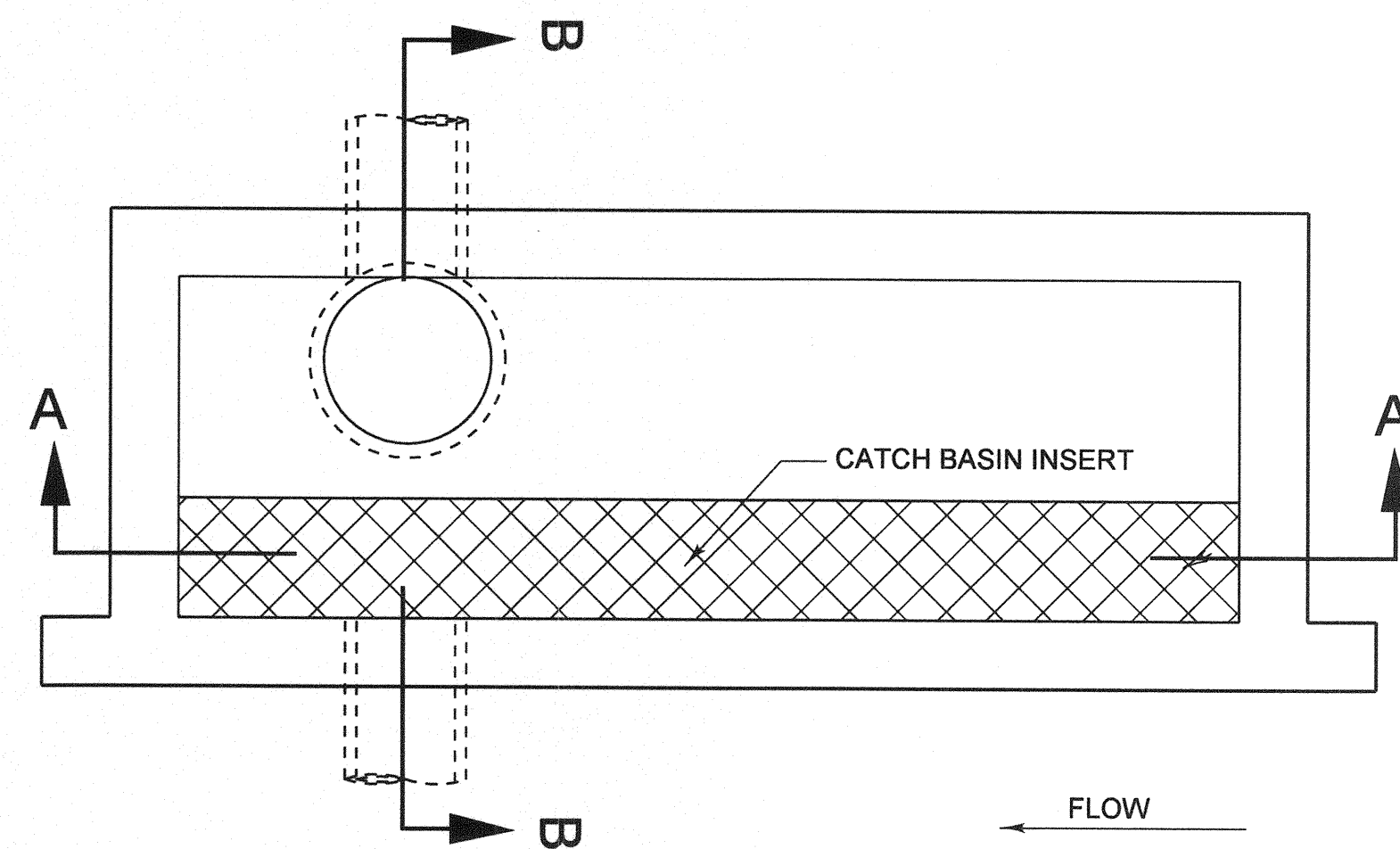


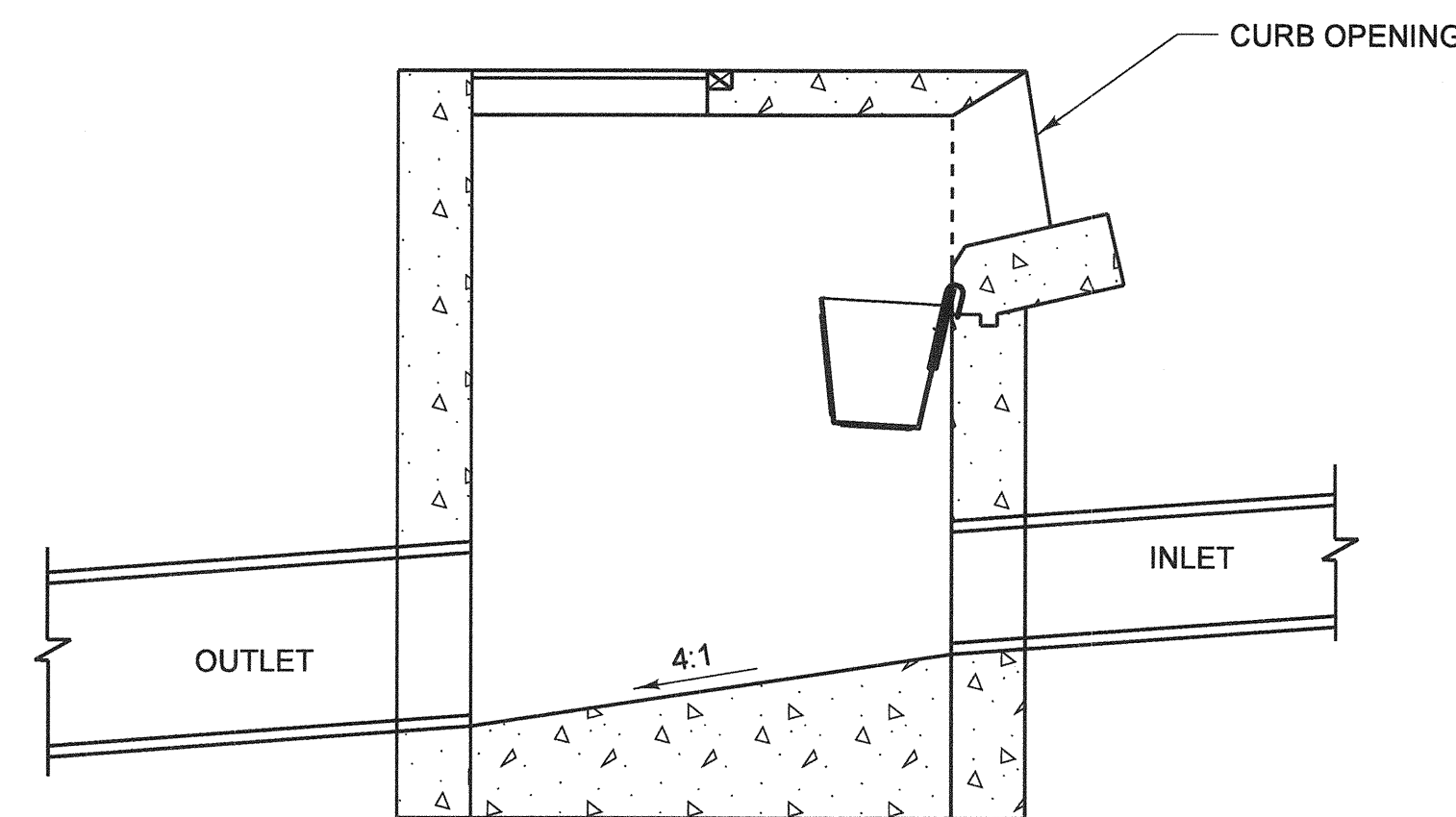
SECTION A-A
NTS



PLAN VIEW
NTS

MODIFIED TYPE II INLET WITH WATER QUALITY EQUIPMENT

1. CONSTRUCTION TO CONFORM TO RDMD STANDARD PLAN 1302, INLET TYPE II EXCEPT AS NOTED.
2. CATCH BASIN INSERT TO BE DESIGNED TO CAPTURE SEDIMENT DEBRIS, TRASH AND OILS/GREASE FROM LOW (FIRST FLUSH) FLOWS.
3. CATCH BASIN INSERT TO BE APPROVED BY THE COUNTY'S RESIDENT ENGINEER PRIOR TO INSTALLATION.



SECTION B-B
NTS

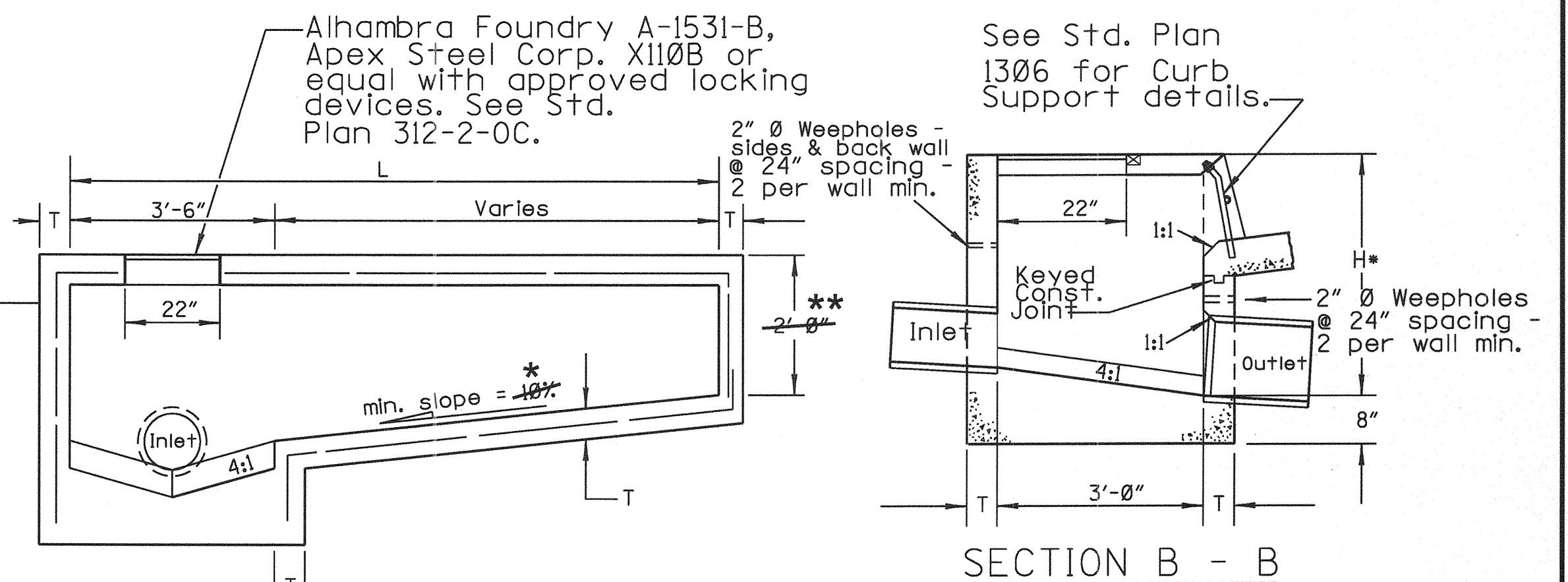
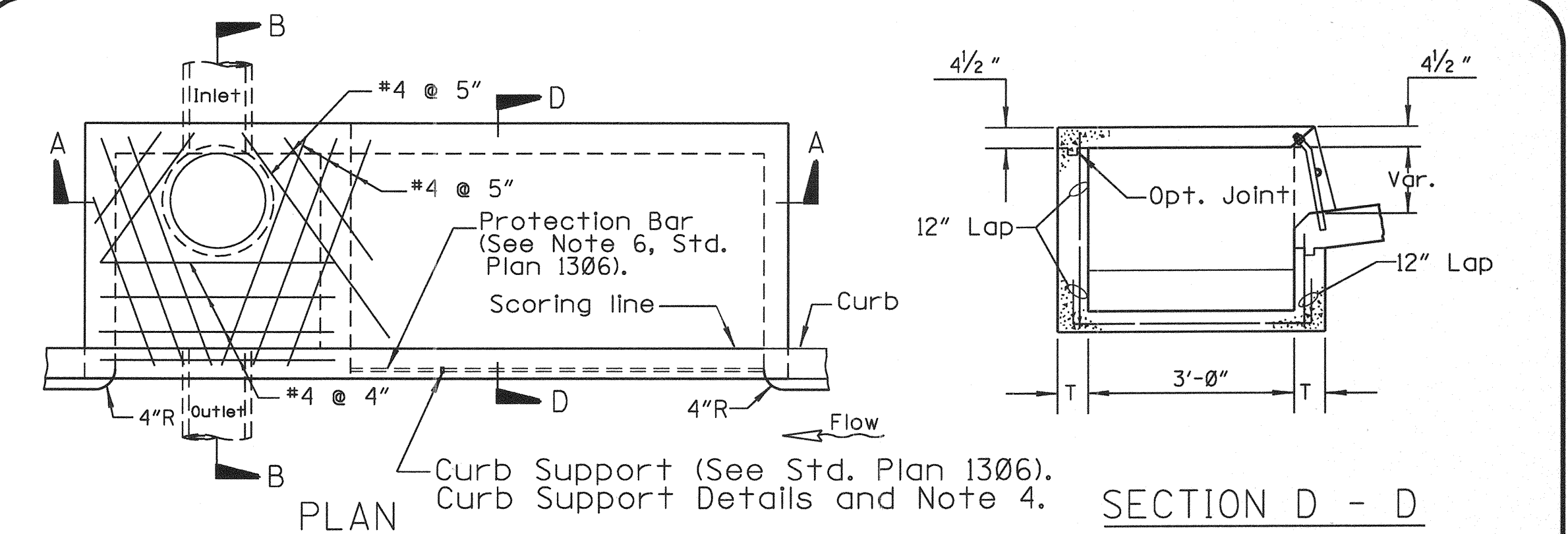
MODIFIED TYPE II INLET WITH REVERSE OUTLET

1. CONSTRUCTION TO CONFORM TO R.D.M.D STANDARD PLAN 1302, INLET TYPE II, EXCEPT AS NOTED.

NO AS BUILT CHANGES

AS BUILT

CORRECTION BY: MN
CONTRACT NO.: EC28121
DATE: 12/30/2009



NOTES:

1. Standard opening lengths, "L" are 7', 10', 14' and 21'. Other lengths may be used, but not to exceed 21'.
2. All reinforcing is #4 @ 12" O.C. for H < 8' and #5 @ 12" O.C. for H ≥ 8' unless otherwise specified.
3. Curb opening shall conform to curb alignment.
4. See Std. Plans 1306 and 1307 for details and notes.
5. See Std. Plan 1308 for Local Depression details.
6. All steel shall be 2" clear from interior concrete surfaces.
7. T=6" for H=5'-0" to < 8'-0". T=8" for H=8'-0" to 20'-0".
8. The following shall be stencilled using 2 inch high letters and black point on the face of the curb adjacent to the inlet (either side) and on the top of the inlet:
**NO DUMPING
DRAINS TO OCEAN**
9. Deck, including steel reinforcement, shall be constructed the same width as sidewalk (up to 6' wide).

ORANGE COUNTY RESOURCES & DEVELOPMENT MANAGEMENT DEPARTMENT

Approved: *H. I. Nakasone*

H. I. Nakasone, Chief Engineer

Adopted: Res. 77-92

Revised: Res. 78-791; 82-718; 86-1141; 91-1481; 96-546; 06-010

STD. PLAN

1302

SHT. 1 OF 1

INLET TYPE II

REVISIONS

- * MINIMUM SLOPE = 6%
- ** D = 3'-0" FOR L LESS THAN OR EQUAL TO 10'-0"
D = 4'-0" FOR L GREATER THAN 10'-0"

PLANS PREPARED BY:
HNTB
HNTB Corporation
200 E. SANDPOINTE AVENUE, SUITE 200
SANTA ANA, CALIFORNIA 92707
TEL (714) 460-1600 FAX (714) 460-1610

ORANGE COUNTY RESOURCES & DEVELOPMENT MANAGEMENT DEPT		ANTONIO PARKWAY WILDLIFE IMPROVEMENT PLANS		TYPE II INLET DETAILS D-7	
DESIGNED: R. NIERE	CHECKED: S. STROH	DATE: 10/21/06	SCALE: 1 1/8" = 1'-0"	DRAWING NO. NOV. 18, 2005	SHEET 17 OF 72

Date Plotted: 08 November, 2006 10:15

File Name: J:\34092\CADD\Hwy\Drainage\drainage07-20061012-Rev2