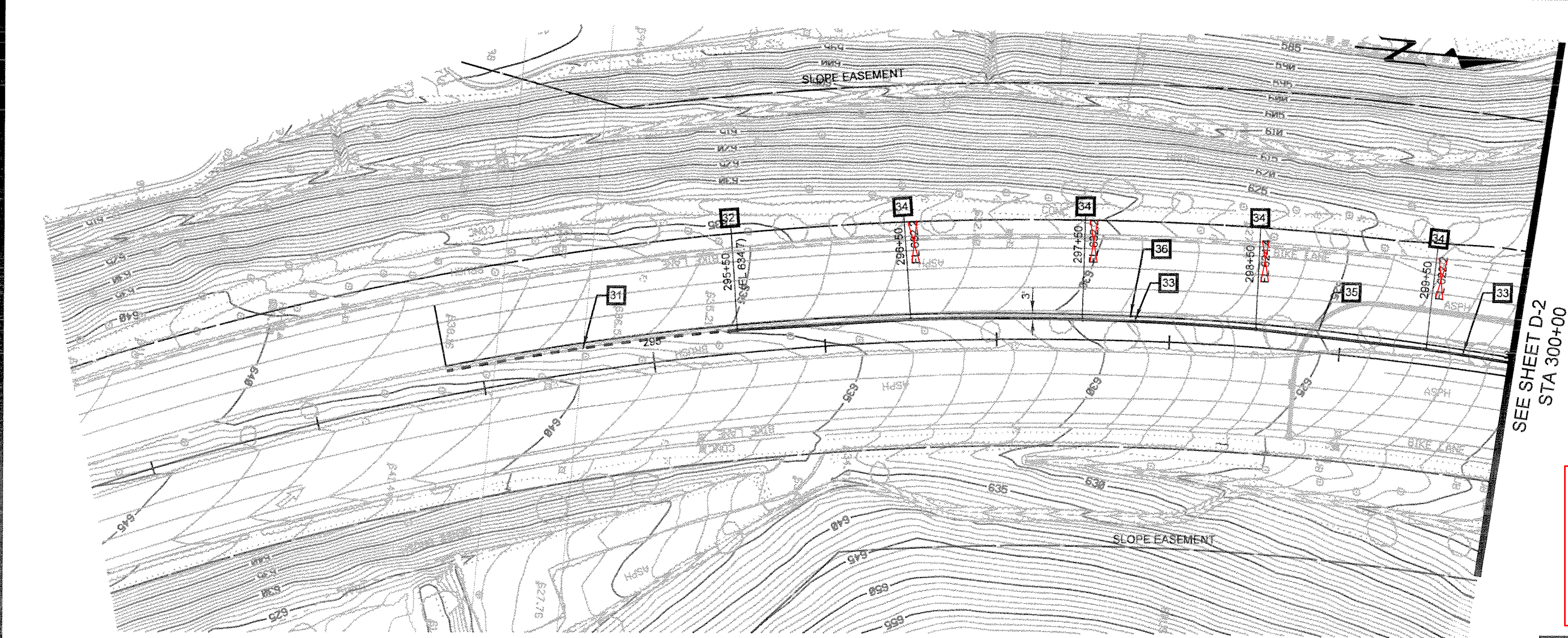


PROFILE
HORIZ. 1" = 40'
VERT. 1" = 8'



FL ELEVATIONS
SEE SHEET 15,
MEDIAN GRATE
INLET DETAIL A

CONSTRUCTION NOTES

- 31 PROTECT IN PLACE EXISTING 8" PVC
- 32 PROTECT IN PLACE EXISTING CB
- 33 INSTALL 8" PVC
- 34 INSTALL MEDIAN GRATE INLET, SEE DETAIL A, SHT D-5
- 35 REMOVE EXIST PVC PIPE AND CB'S
- 36 TOP OF CURB, SEE L-SHEETS

AS BUILT

CORRECTION BY: MN
CONTRACT NO.: EC28121
DATE: 12/30/2009

PLANS PREPARED BY:
HNTB
HNTB Corporation
200 E. SANDPOINTE AVENUE, SUITE 200
SANTA ANA, CALIFORNIA 92707
TEL (714) 460-1600 FAX (714) 460-1610

PLAN 1" = 40'		ORANGE COUNTY RESOURCES & DEVELOPMENT MANAGEMENT DEPT	
ANTONIO PARKWAY WILDLIFE IMPROVEMENT PLANS		STA 294+00 TO 300+00 DRAINAGE PLANS D-1	
DESIGNED: J. NIESE	CHECKED: J. SHON	SCALE: AS SHOWN	DATE: 11/18/05
DRAWN: M. KUNA	CHECKED: J. SHON	DRAWING NO. 11	OF 72

PREPARED UNDER RESPONSIBLE CHARGE OF:
STEVEN B. STROM
RCE C 59687 (EXP. 12-31-07)
CIVIL
DATE OF EXPIRATION: 12/31/07

Date Plotted: dd-mm-yyyy hh:mm

File Name: \$DGN-FILE-NAMES

Border sheet last modified 05-Nov-1999