

PROFILE
HORIZ. 1" = 40'
VERT. 1" = 8'

NOTE

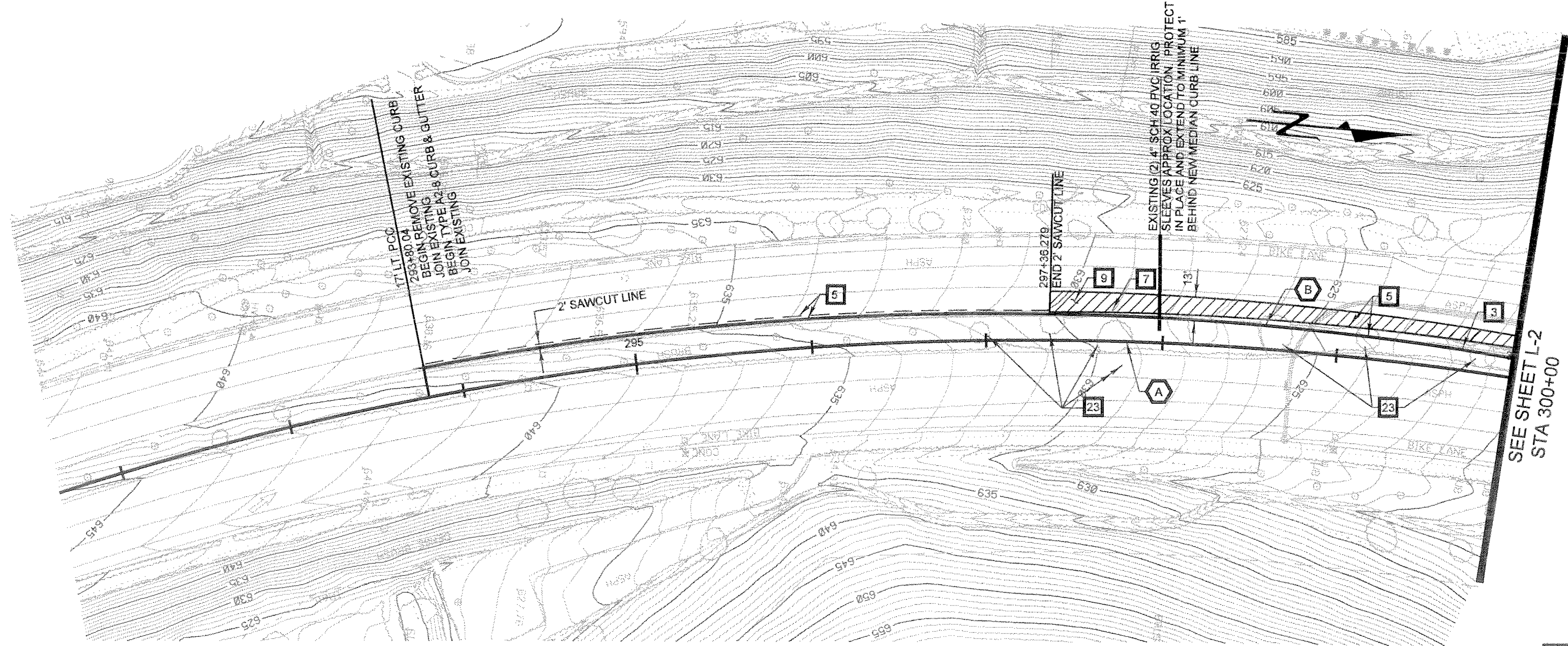
THE PROPOSED VERTICAL ALIGNMENT AND SUPERELEVATION OF ANTONIO PARKWAY IS BASED ON THE EXISTING ROADWAY. THE PROFILE AND SUPERELEVATION DIAGRAM OF THE EXISTING ROADWAY WAS CONSTRUCTED FROM THAT OF THE "ANTONIO PARKWAY PHASE III" PROJECT, WHICH IS INCLUDED AS A REFERENCE IN APPENDIX 7 OF THE PROJECT SPECIFICATIONS

CONSTRUCTION NOTES

- 3 CONSTRUCT P.C.C. CURB & GUTTER TYPE A2-8, W=12", PER RDMD STD. PLAN 120-0-0C.
- 5 CONSTRUCT 14" A.C.
- 7 REMOVE EXISTING CURB & GUTTER.
- 9 COLD PLANE 2" AND RESURFACE AC PAVEMENT 2" MINIMUM
- 23 REMOVE TREE

CURVE DATA

- A Δ= 59°33'51"
R= 1800.00'
L= 1871.26'
T= 1030.12'
- B Δ= 22°59'15"
R= 1720.00'
L= 660.07'
T= 349.74'



AS BUILT

CORRECTION BY: MN
CONTRACT NO.: EC28121
DATE: 12/30/2009

PLANS PREPARED BY: HNTB Corporation
200 E. SANDPOINTE AVENUE, SUITE 200
SANTA ANA, CALIFORNIA 92707
TEL (714) 460-1600 FAX (714) 460-1610

PLAN 1" = 40'		ORANGE COUNTY RESOURCES & DEVELOPMENT MANAGEMENT DEPT	
ANTONIO PARKWAY WILDLIFE IMPROVEMENT PLANS		STA 293+80 TO 300+00 PLAN & PROFILE L-1	
DESIGNED BY: J. NIEBER	CHECKED BY: S. STROM	DATE: 11/1/2005	SHEET 5 OF 72
SCALE: AS SHOWN	DATE: 11/1/2005	DRAWING NO.: 100	

Date Plotted: dd-mm-yyyy hh:mm File Name: \$DGN-FILE-NAMES\$