

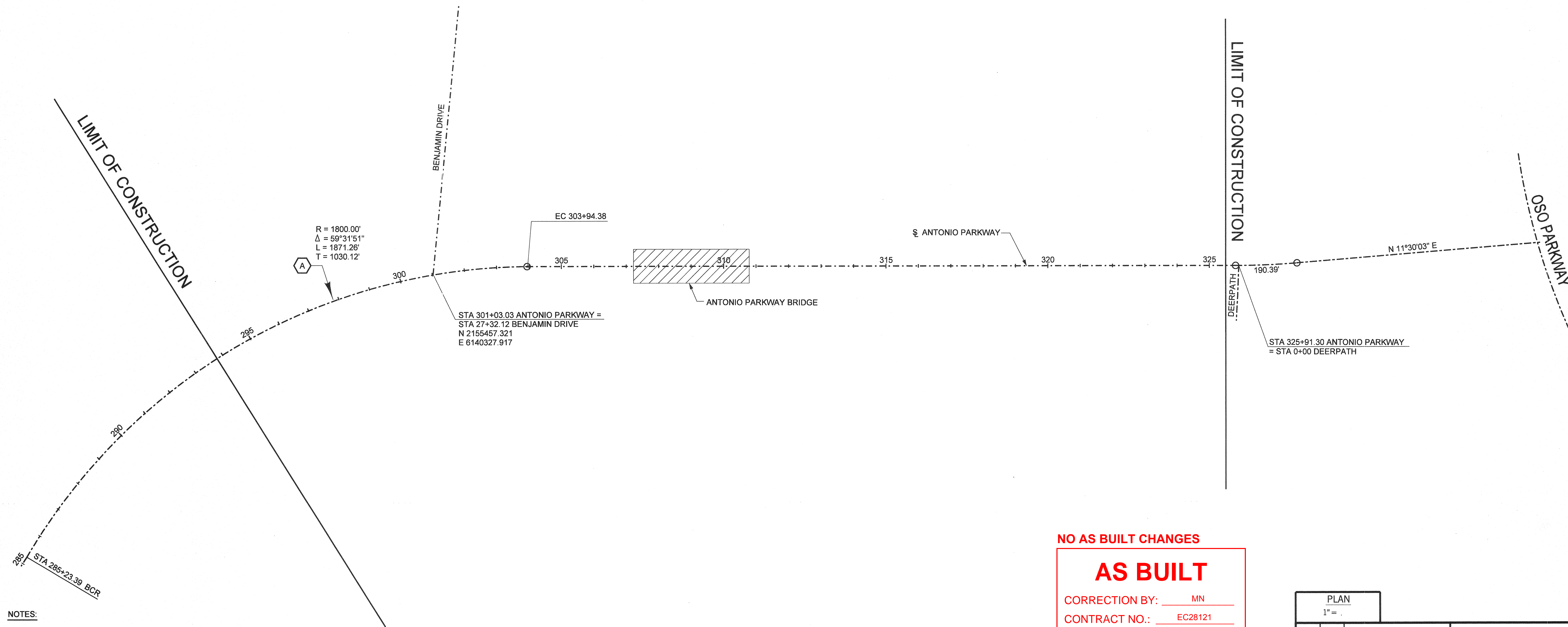
BASIS OF BEARINGS

THE BEARINGS SHOWN HEREON ARE BASED ON THE BEARING BETWEEN OCS HORIZONTAL CONTROL STATION GPS NO. 1417 AND STATION GPS NO. 1431, BEING N°45 51'18"W PER RECORDS ON THE FILE IN THE OFFICE OF THE ORANGE COUNTY SURVEYOR.

DATUM STATEMENT

COORDINATES SHOWN ARE BASED ON THE CALIFORNIA COORDINATE SYSTEM (CCS83) ZONE VI, 1991.35 EPOCH ADJUSTMENT

ALL DISTANCES SHOWN ARE GROUND, UNLESS OTHERWISE NOTED.



- NOTES:
- HORIZONTAL CONTROL FOR MAPPING IS BASED ON COUNTY OF ORANGE OCS GPS CONTROL CCS83, ZONE VI, 1991.35 EPOCH ADJUSTMENT WITH CONTROL STATIONS NUMBERED 1417 AND 1431 BEING UTILIZED AS PRIMARY BASE CONTROL.
 - VERTICAL CONTROL FOR MAPPING IS BASED ON COUNTY OF ORANGE NGVD29 DATUM, OCS 1995 ADJUSTMENT UTILIZING BENCH MARK NUMBER 3BB-3688, ELEV. 478.775'.
 - SURVEY DATA PROVIDED BY HUITT-ZOLLARS INC. REFERENCE THE ANTONIO PARKWAY CENTELINE CONTROL ON FILE AT HUITT-ZOLLARS (JOB NO. 10-0367-50) FOR MORE INFORMATION
 - SURVEY DATA WAS PROVIDED IN IMPERIAL UNITS.

NO AS BUILT CHANGES

AS BUILT

CORRECTION BY: MN
CONTRACT NO.: EC28121
DATE: 12/30/2009

PLANS PREPARED BY:
HNTB
HNTB Corporation
200 E. SANDPOINTE AVENUE, SUITE 200
SANTA ANA, CALIFORNIA 92707
TEL (714) 460-1600 FAX (714) 460-1610

PLAN 1" =		ORANGE COUNTY RESOURCES & DEVELOPMENT MANAGEMENT DEPT	
		ANTONIO PARKWAY WILDLIFE IMPROVEMENTS PLANS	
		KEYMAP AND SURVEY CONTROL SCHEMATIC	
DESIGNED: E. GONDO		SHEET 2 OF 72	
DRAWN: N. BUNIA		CHECKED: S. STROH	
SCALE: AS SHOWN		DATE: 11/18/05	
DATE: 10/31/06		DRAWING NO. xxx	

PREPARED UNDER RESPONSIBLE CHARGE OF:
STEVEN B. STROH
REGISTERED PROFESSIONAL ENGINEER
NO. C 59687
EXP. 12-31-07
STATE OF CALIFORNIA
10/31/06

Date Plotted: 27 October, 2006 01:23

File Name: J:\34092\CADD\Hwy\Sheets\surveycontrol.dgn
Pen Table Used: \\irv\00\cadd\irv\mstrn\workspace\agency\orange\olp

Border sheet last modified 05-Nov-1999