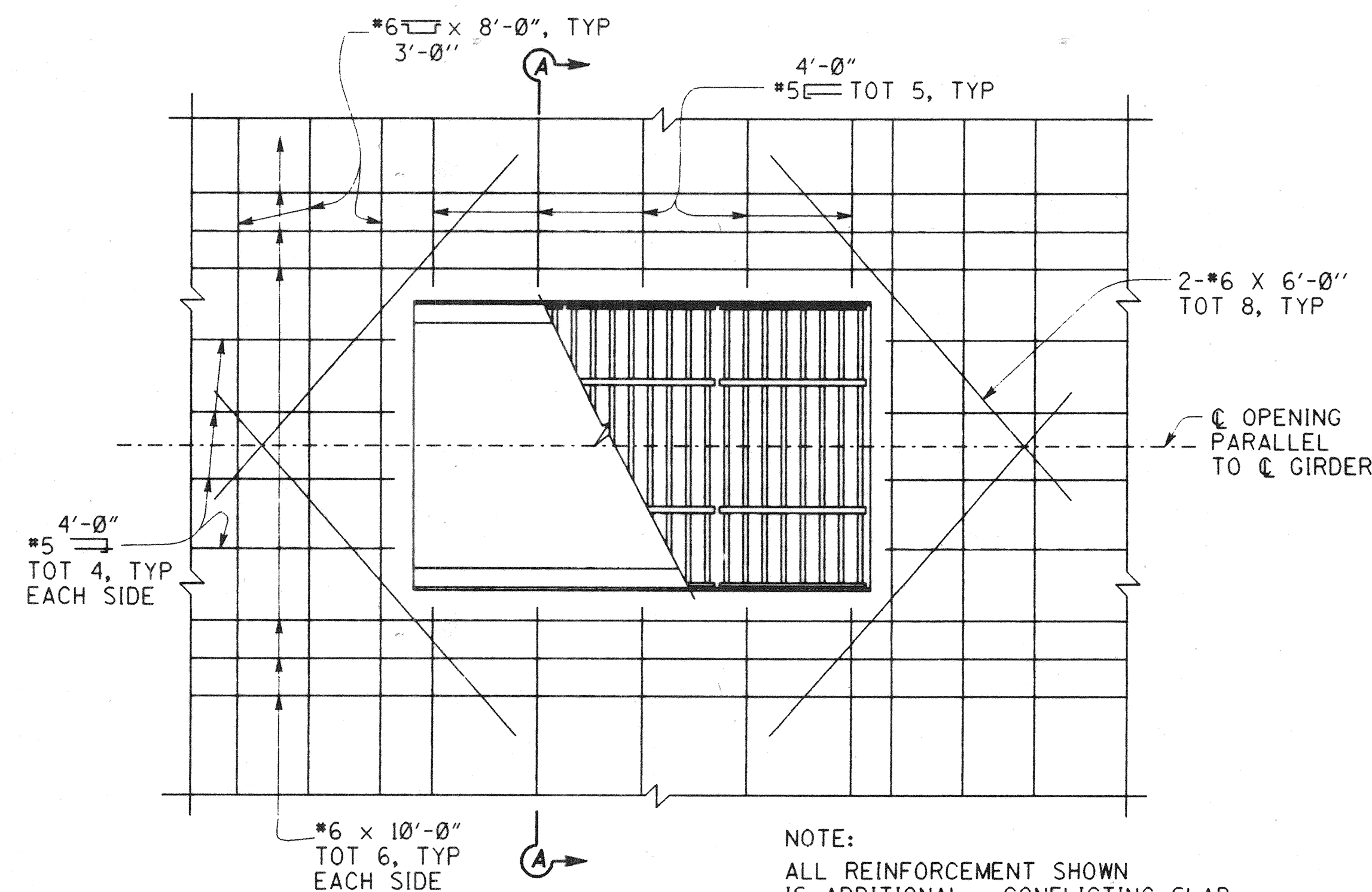


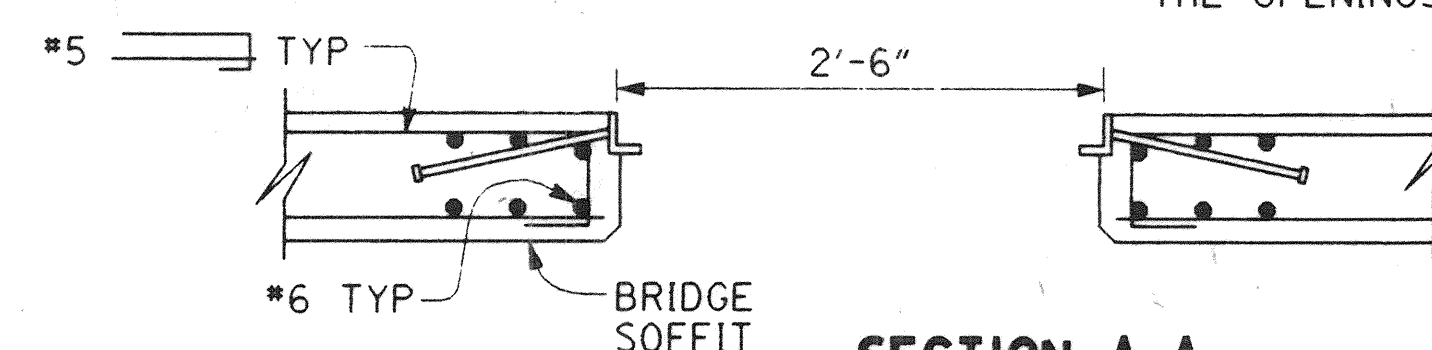
CONCRETE BARRIER TYPE 25 MODIFIED

1"=1'-0"

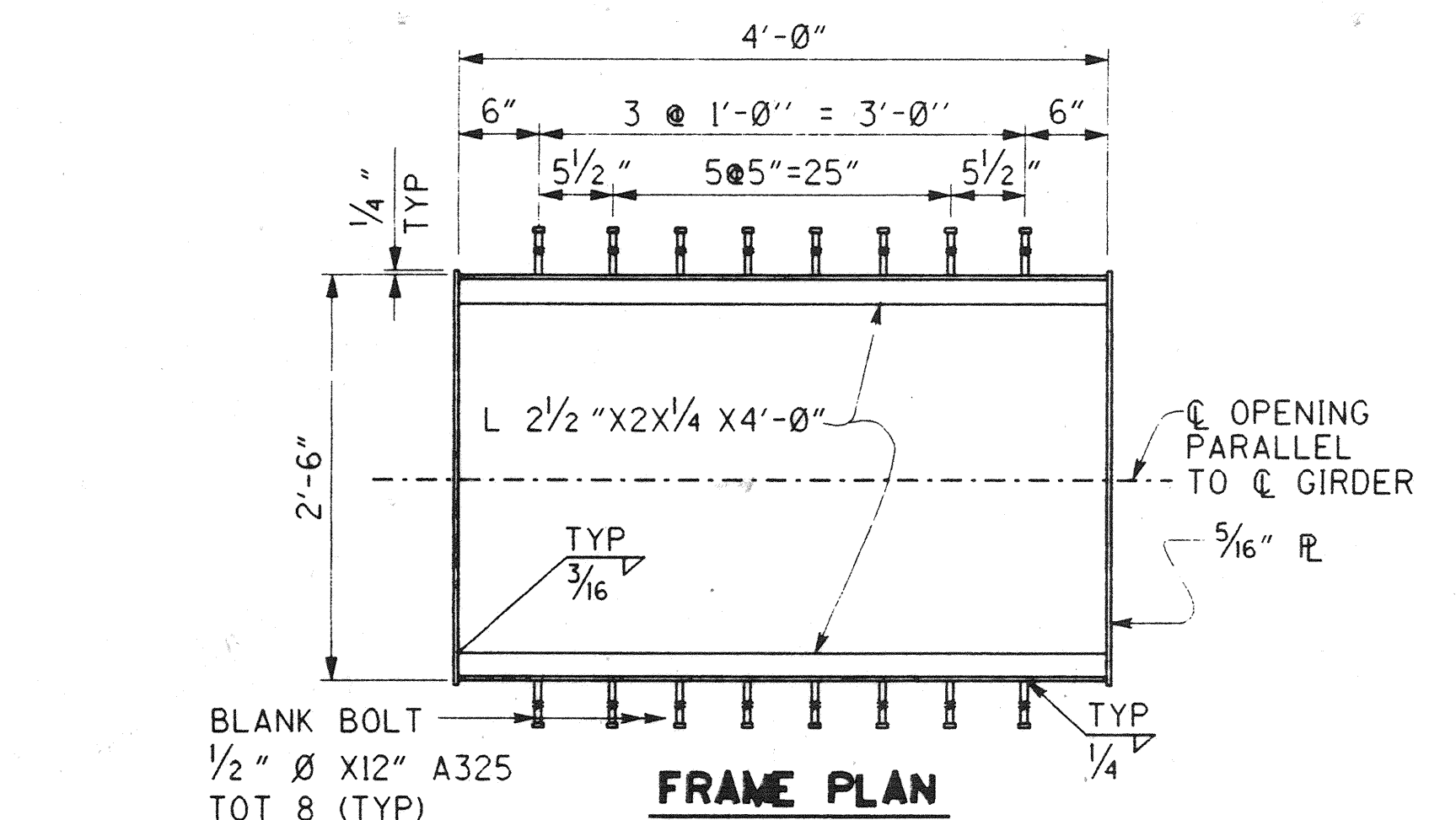


PLAN

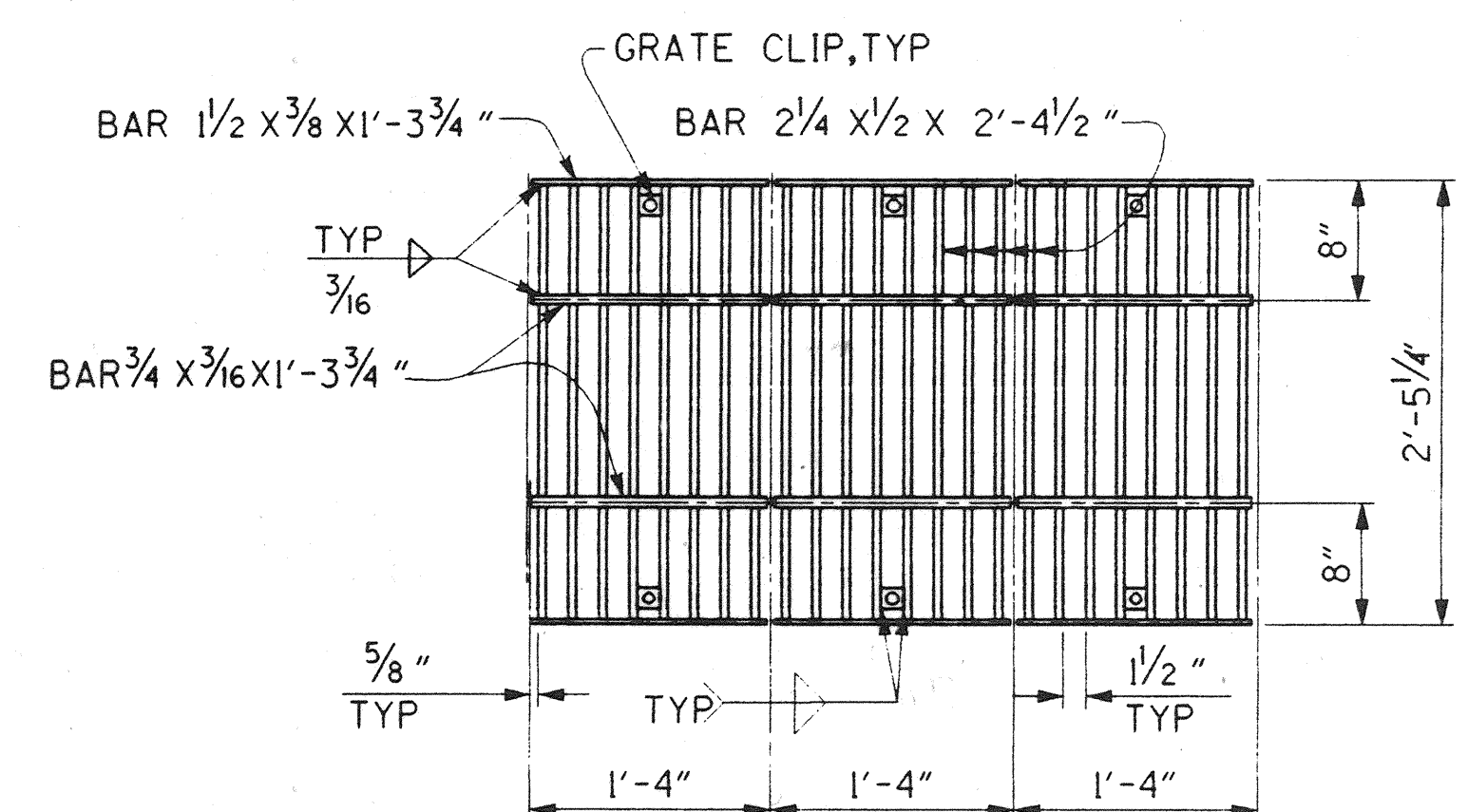
NOTE: ALL REINFORCEMENT SHOWN IS ADDITIONAL. CONFLICTING SLAB REINFORCEMENT SHOULD BE CUT 3" FROM EDGE OF THE OPENINGS.



SECTION A-A



FRAME PLAN

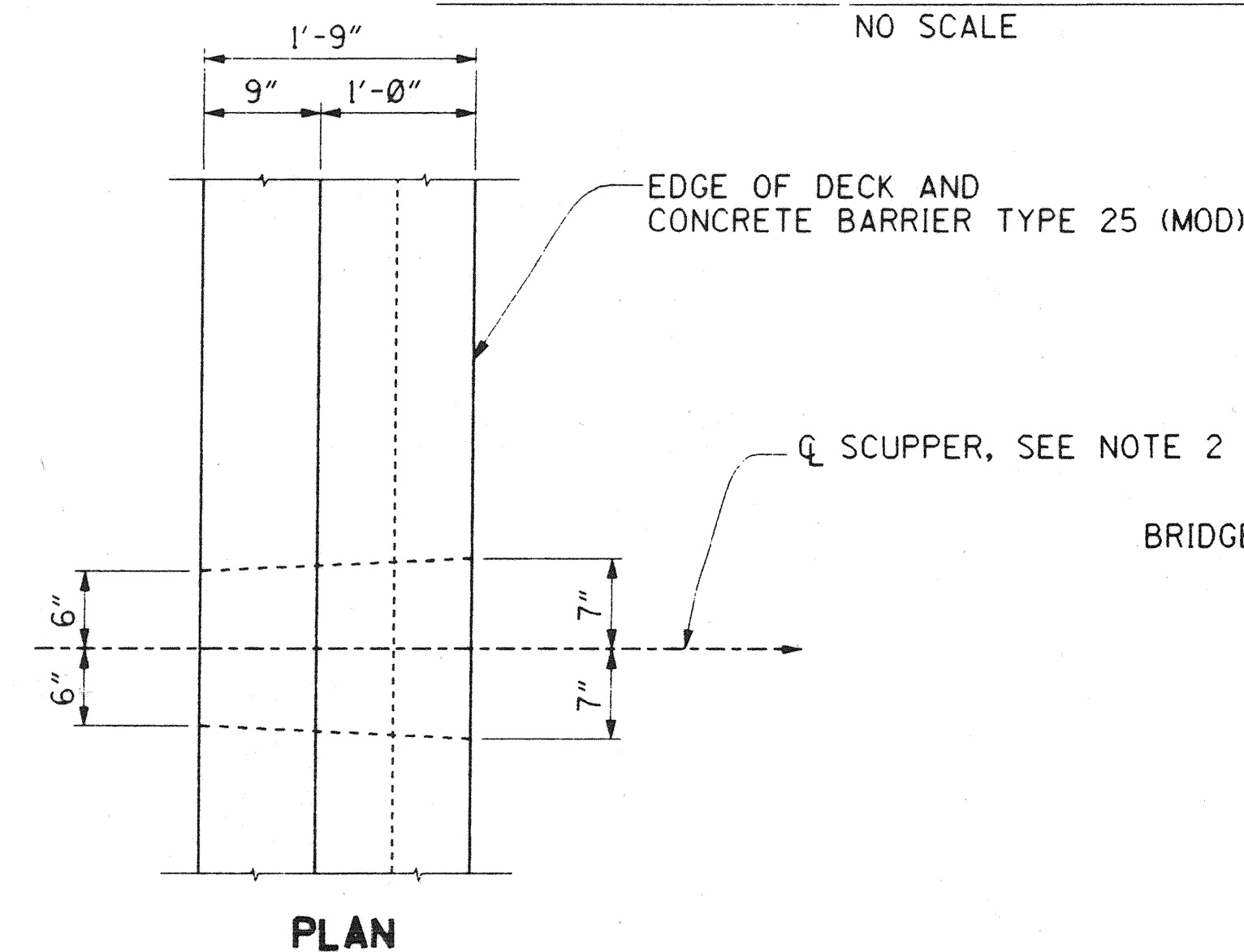


GRATE PLAN

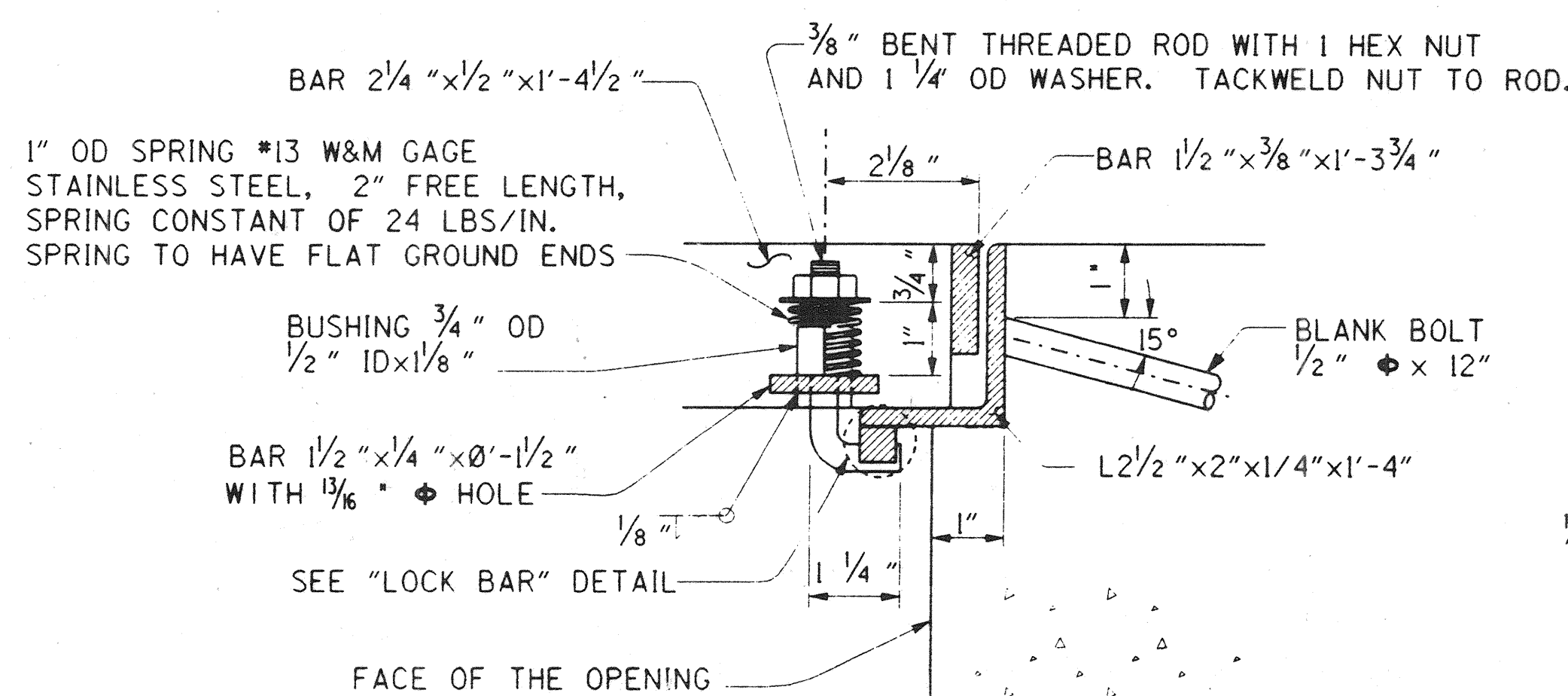
NOTE: GRATING CONSISTS OF 3 IDENTICAL UNITS.

SOFFIT ACCESS OPENING DETAILS

NO SCALE



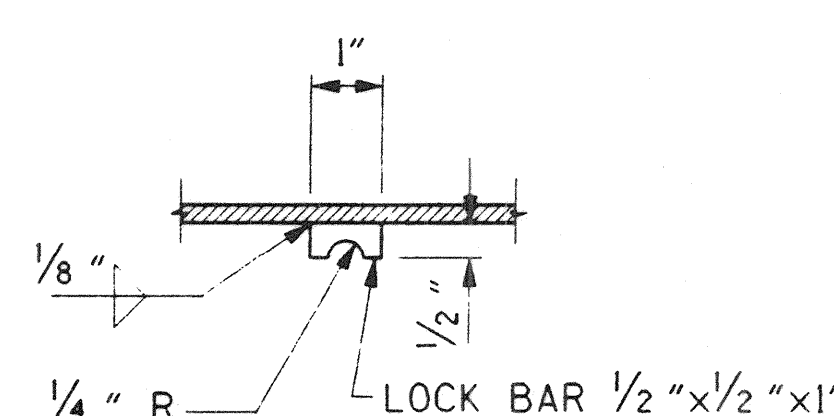
PLAN



DETAIL A

GRATE CLIP DETAIL

NOT TO SCALE



LOCK BAR

NOTES:

1. FOR POST ANCHORAGE DETAILS, END TRANSITION DETAILS, AND OTHER BARRIER DETAILS NOT SHOWN SEE CALTRANS STANDARD PLAN BII-53.
2. SCUPPER DRAIN TO BE PLACED IN EAST SIDE CONCRETE BARRIER TYPE 25 (MOD) AT 10'-0" SPACING FROM BB TO EB.
3. THE CONTRACTOR SHALL VERIFY ALL CONTROLLING FIELD DIMENSIONS BEFORE ORDERING OR FABRICATING ANY MATERIALS.

SCUPPER DRAIN DETAILS

1"=1'-0"

RECORD DRAWING

PLANS PREPARED BY:

HNTB

36 EXECUTIVE PARK
SUITE 300
IRVINE, CALIFORNIA 92614

ELEVATION

1/2" = 0' 1" = 2'
3 inches on original drawing

ORANGE COUNTY PUBLIC FACILITIES AND RESOURCES DEPT.		ANTONIO PARKWAY WILDLIFE UNDERCROSSING	
MISCELLANEOUS DETAILS			
DESIGNED Wendy W. Li	CHECKED S. Garcia	DATE 12-31-97	SHEET 51
DRAWN S. Garcia	SCALE AS SHOWN	DATE 12-31-97	OF 64

DR. 5 (16160)
Sheet 51 OF 64