

TYPICAL SECTION - 10" FACILITY

1"=1'-0"

CATHODIC PROTECTION CABLE #2 CLASS B STRANDED COPPER IN ACCORDANCE WITH ASTM B-8, WITH HMWPE INSULATION COMPLYING WITH ASTM D-1248 GRADE E5. THE CABLE SHALL BE SURFACE PRINTED WITH THE CONDUCTOR SIZE, THE MANUFACTURER, AND "HMWPE CATHODIC PROTECTION CABLE". (2 REQ. FOR EACH JOINT)

10" RESTRAINED JOINT DUCTILE IRON PIPE (CLASS 50), SEE NOTE 5

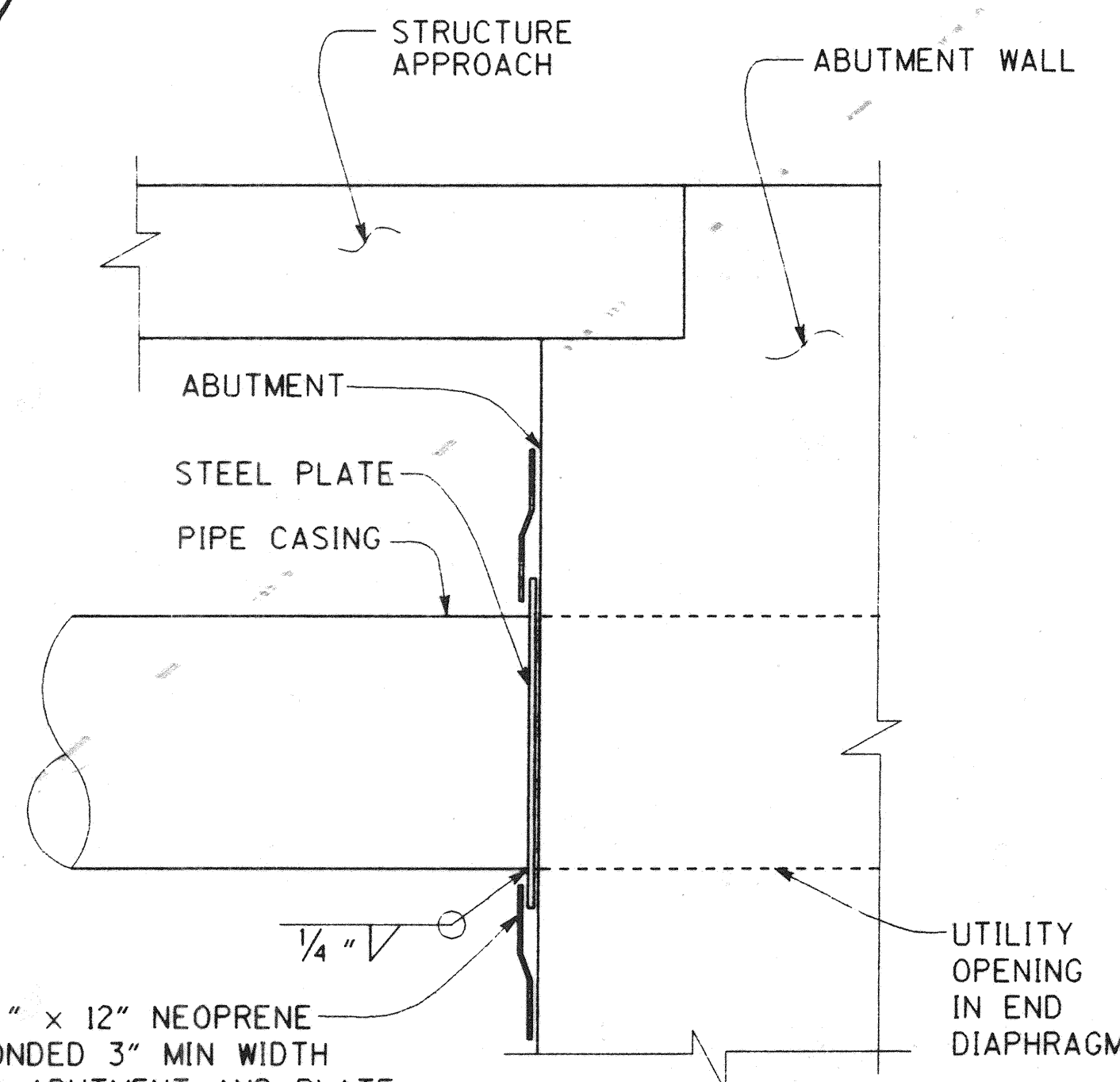
CADWELD (TYP.), SEE NOTE 7

RESTRAINED JOINT PIPE DETAILS

NOT TO SCALE

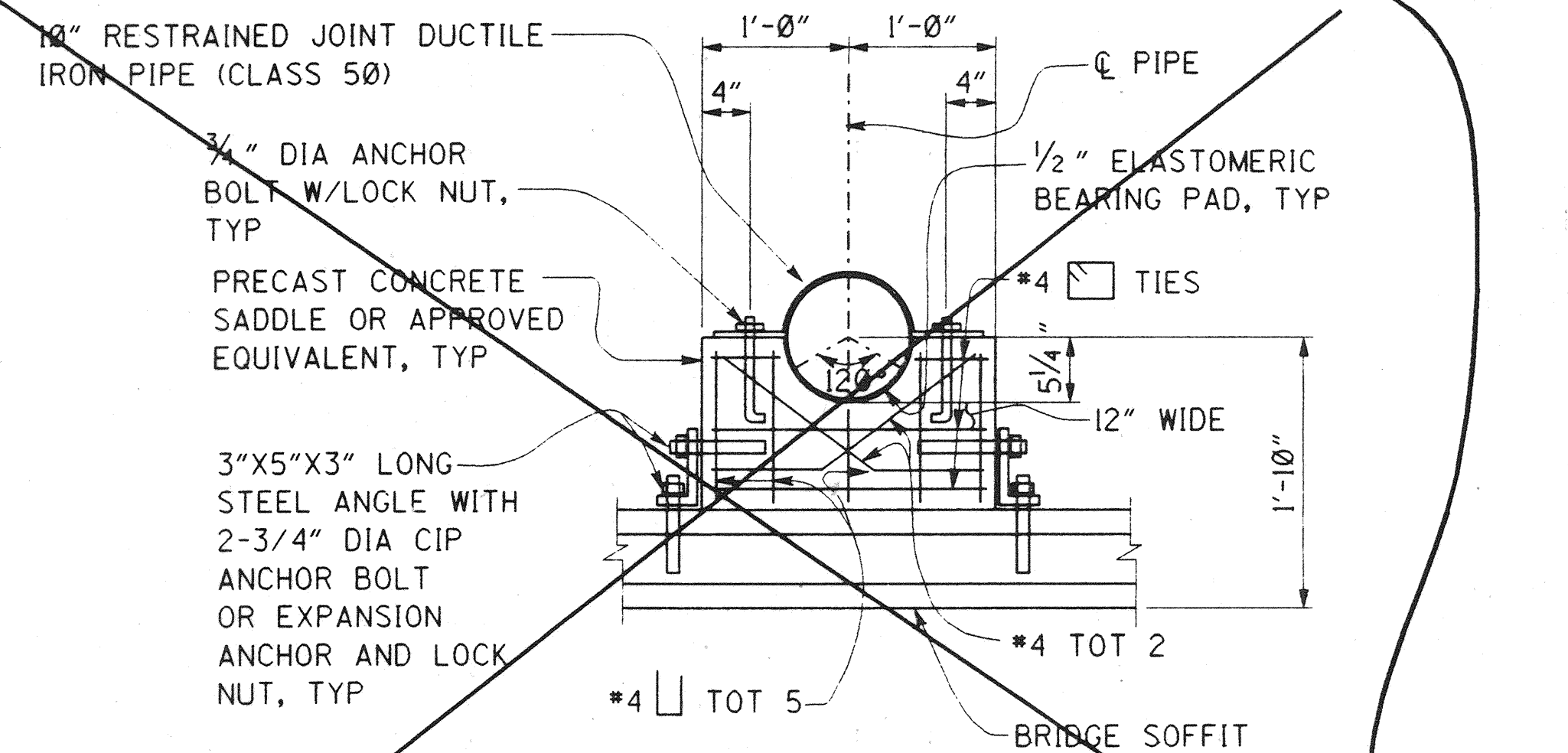
NOTES:

1. SEAL END OF CASING WITH A METHOD ACCEPTABLE TO THE ENGINEER.
2. THE CONTRACTOR SHALL VERIFY ALL CONTROLLING FIELD DIMENSIONS BEFORE ORDERING OR FABRICATING ANY MATERIALS.
3. PIPE STRAPS SHALL NOT BE TIGHTENED UNTIL THE FALSEWORK HAS BEEN REMOVED.
4. TEMPORARY BLOW-OFF AT BOTH ABUTMENTS PER SMWD STANDARD DRAWING W20A.
5. PIPE JOINTS SHALL BE FULLY EXTENDED TO TAKE UP THE JOINT SLACK PRIOR TO MAKING END CONNECTIONS PER MANUFACTURER RECOMMENDATIONS.
6. CONTRACTOR SHALL REMOVE ALL FALSEWORK FROM CELLS HOUSING SMWD FACILITIES.
7. REMOVE EXISTING COATING AS REQUIRED FROM PIPE TO FACILITATE INSTALLATION. CLEAN STEEL BY WIRE BRUSH METHOD AND GRIND TO BRIGHT METAL PRIOR TO WELDING. INSTALL WIRES USING THE EXOTHERMIC WELDING PROCESS IN ACCORDANCE WITH ERICO ENGR. SPEC. A160-A05. COAT EACH WELD WITH A ROYSTON "HANDY CAP" NO. 2 WELD COVER AND RESTORE PIPE COATING IN ACCORDANCE WITH SMWD STANDARD SPECIFICATIONS.
8. CATHODIC PROTECTION CABLE (2 REQ. EACH JOINT) PER RESTRAINED JOINT PIPE DETAILS THIS SHEET. LEAVE SLACK ACROSS EXPANSION JOINT.



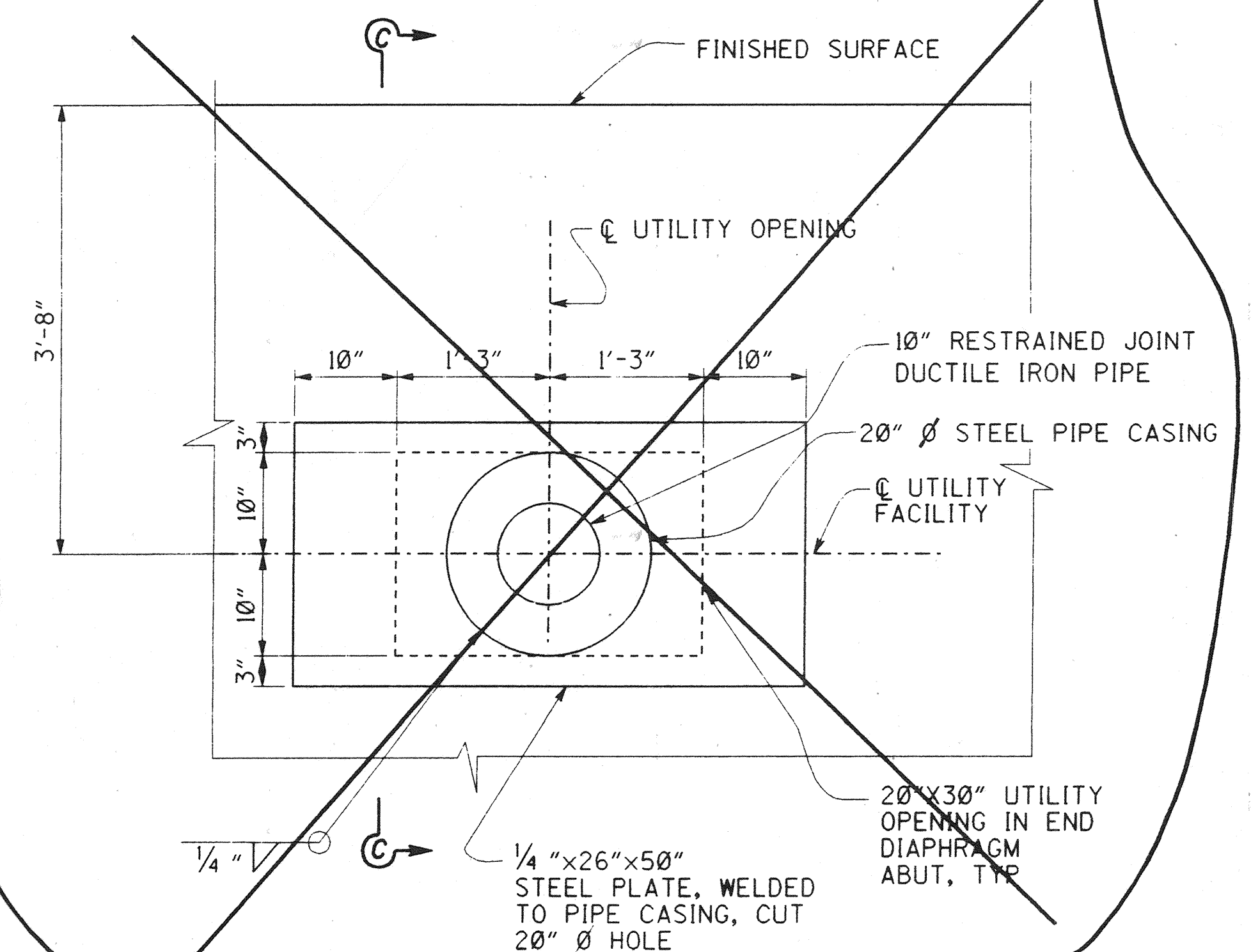
DETAIL A

NO SCALE



SECTION A-A

1"=1'-0"



SECTION B-B

1"=1'-0"

DR. 5 (16160)
Sheet 50 of 64

1/2" = 0' 1" 2"
3 inches on original drawing

RECORD DRAWING

RECOMMENDED FOR APPROVAL - SMWD	
DISTRICT ENGINEER	<i>David N. Jones</i>
NO. 39535	EXP. 12/31/07
HNTB 34 EXECUTIVE PARK SUITE 200 IRVINE, CALIFORNIA 92614	

ORANGE COUNTY PUBLIC FACILITIES AND RESOURCES DEPT.	
ANTONIO PARKWAY WILDLIFE UNDERCROSSING	
SMWD UTILITY DETAILS NO.2	
16/20	
DESIGNED	Wendy W. Li
DRAWN	WHL/SAN
CHECKED	SWH/ator
SCALE	DATE
AS SHOWN	DRAWING NO.
50	
OF 64	

DR. 5 (16160)