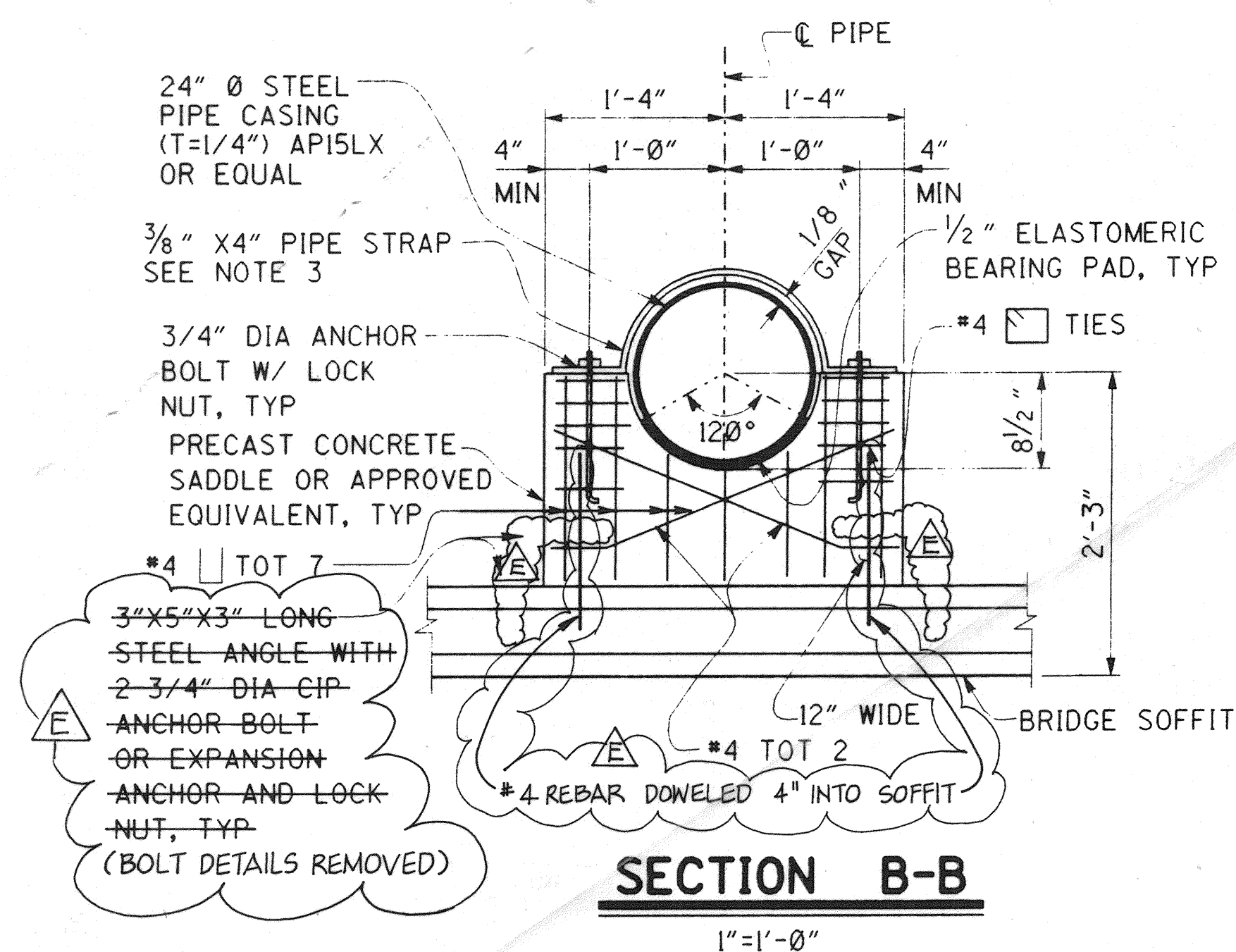
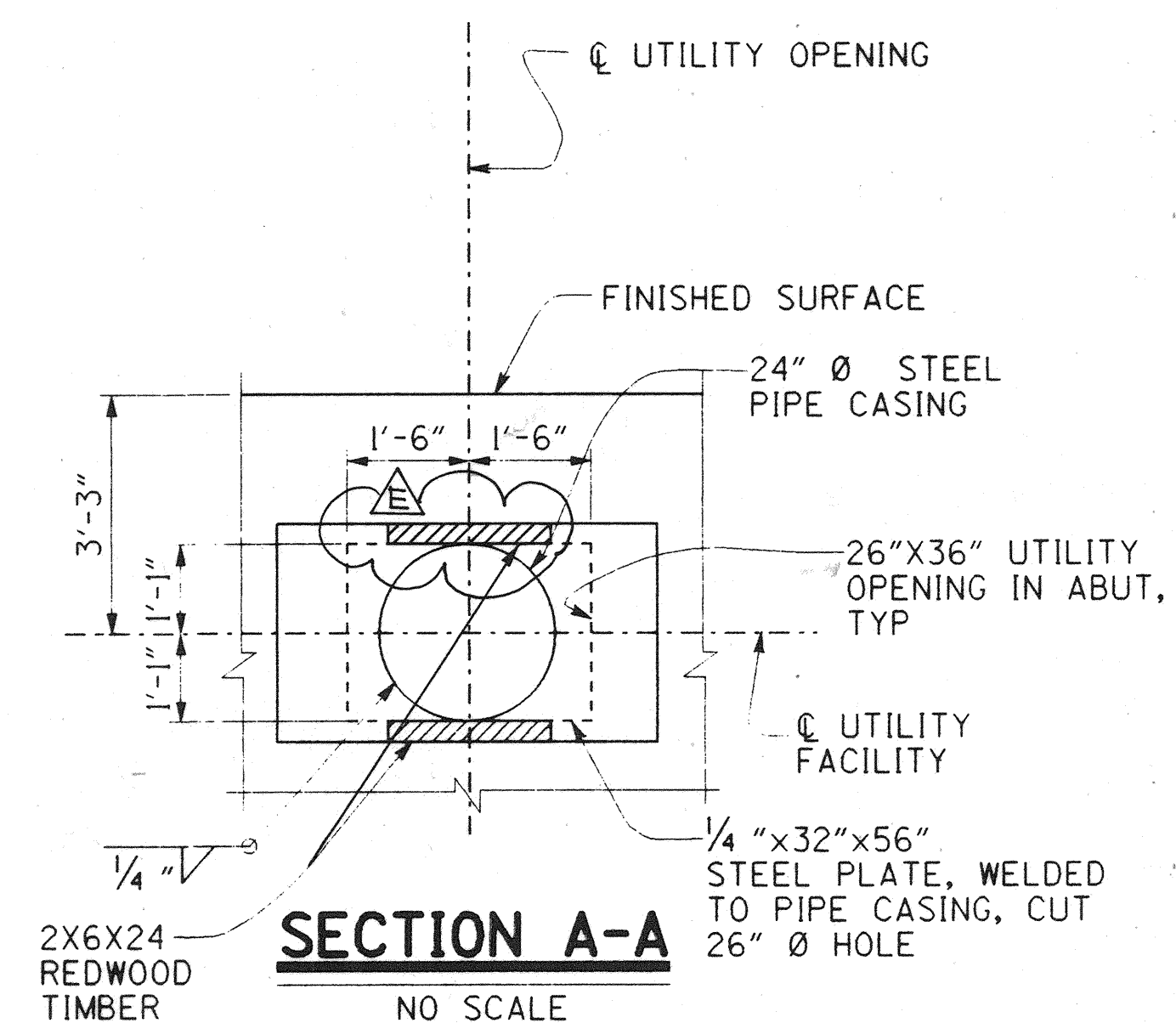


TYPICAL SECTION - 24" CASING

3/8"=1'-0"

NOTES:

1. SEAL END OF CASING WITH A METHOD ACCEPTABLE TO THE ENGINEER.
2. THE CONTRACTOR SHALL VERIFY ALL CONTROLLING FIELD DIMENSIONS BEFORE ORDERING OR FABRICATING ANY MATERIALS.
3. PIPE STRAPS SHALL NOT BE TIGHTENED UNTIL THE FALSEWORK HAS BEEN RELEASED.
4. TEMPORARY BLOW-OFF AT BOTH ABUTMENTS PER SMWD STANDARD DRAWING W20A.
5. SEE SMWD STANDARD DRAWING W24 FOR WELDED PIPE JOINT DETAILS. CLOSURE WELDS IN PIPE JOINTS WITHIN THE BRIDGE AT CENTER SPAN, BENT, AND ABUTMENT LOCATIONS ARE TO BE MADE AFTER THE BRIDGE DECK IS PLACED, AND FALSEWORK REMOVED. CLOSURE WELDS AT THE END OF EACH SPAN SHOULD BE AT THE FIRST JOINT WITHIN THE SPAN. THERE SHALL NOT BE ANY PIPE JOINTS WITHIN 2 PIPE DIAMETERS OF THE CENTERLINE OF ANY BENT OR ABUTMENT, EXCEPT AS NOTED.
6. CONTRACTOR SHALL REMOVE ALL FALSEWORK FROM CELLS HOUSING SMWD FACILITIES.



C NEW SHEET

RECORD DRAWING

1/2" = 1' 0" 3 inches on original drawing

DR. 5 (16160)
Sheet 49A OF 64

RECOMMENDED FOR APPROVAL - SMWD	
DISTRICT ENGINEER	<i>[Signature]</i>
RCE 39535	(EXP. 12/31/97)
HNTB	
36 EXECUTIVE PARK SUITE 300 IRVINE, CALIFORNIA 92614	

10/99	AS BUILT SHOWN
7/97	DELETION OF 16" FAC BY SMWD-ADD CASING
REVISIONS	
PREPARED UNDER RESPONSIBLE CHARGE OF:	
<i>[Signature]</i>	
NO. 12-31-97	
CIVIL	
RICHARD A. HART	
RCE 39595 (EXP. 12-31-97)	

ORANGE COUNTY PUBLIC FACILITIES AND RESOURCES DEPT.	
ANTONIO PARKWAY WILDLIFE UNDERCROSSING	
SMWD UTILITY DETAILS NO.1	
DESIGNED Wendy W. Li	CHECKED <i>[Signature]</i>
DRAWN <i>[Signature]</i>	DRAWING NO.
SCALE	DATE
AS SHOWN	
SHEET 49A	OF 64

DR. 5 (16160)