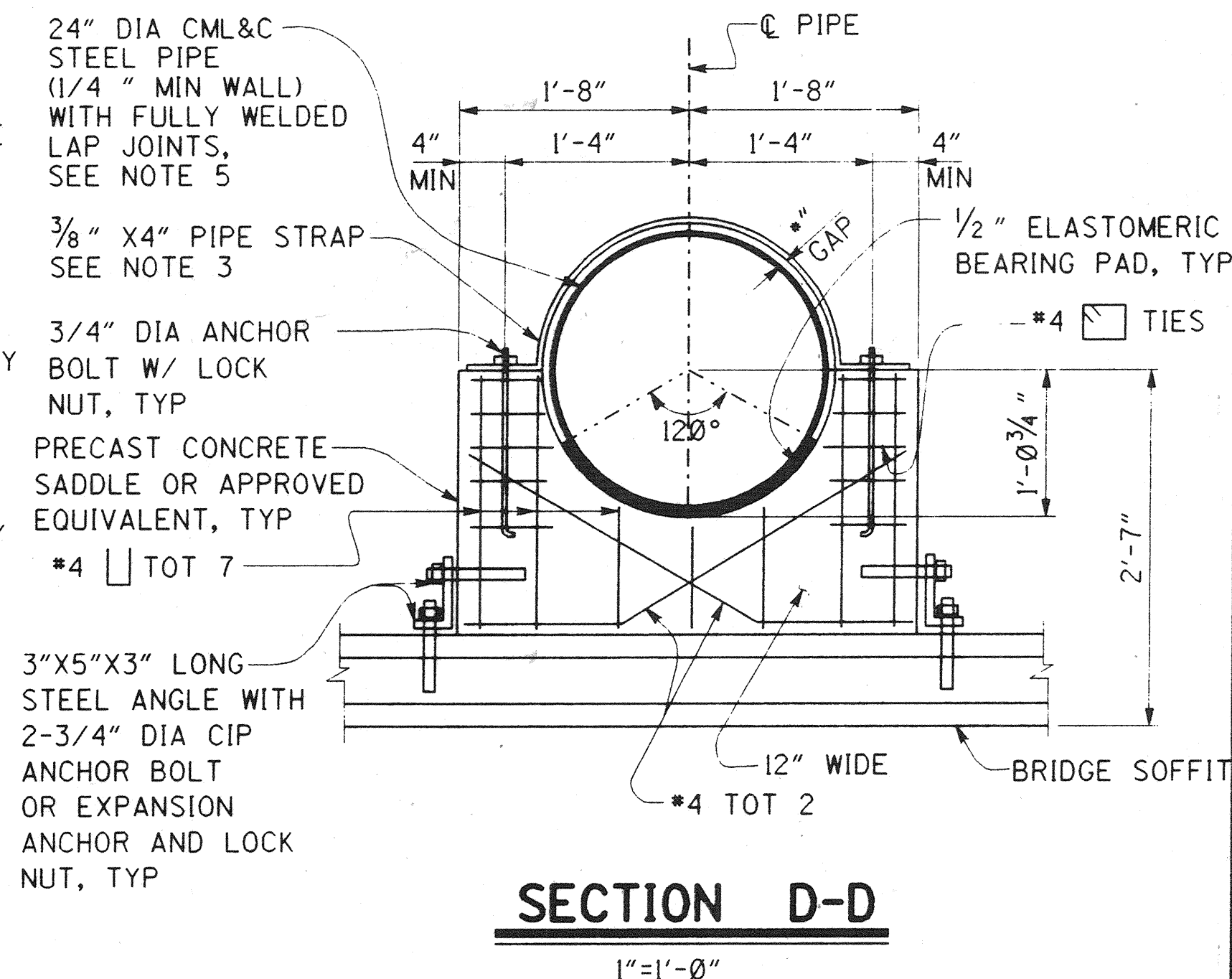


**SECTION A-A**  
NO SCALE

SECTION B-B



## SECTION C-C

SECTION D-D

3 inches on original drawing

5. SEE SMWD STANDARD DRAWING W24 FOR WELDED PIPE JOINT DETAILS. CLOSURE WELDS IN PIPE JOINTS WITHIN THE BRIDGE AT CENTER SPAN, BENT, AND ABUTMENT LOCATIONS ARE TO BE MADE AFTER THE BRIDGE DECK IS PLACED, AND FALSEWORK REMOVED. CLOSURE WELDS AT THE END OF EACH SPAN SHOULD BE AT THE FIRST JOINT WITHIN THE SPAN. THERE SHALL NOT BE ANY PIPE JOINTS WITHIN 2 PIPE DIAMETERS OF THE CENTERLINE OF ANY BENT OR ABUTMENT, EXCEPT AS NOTED.
6. CONTRACTOR SHALL REMOVE ALL FALSEWORK FROM CELLS HOUSING SMWD FACILITIES.


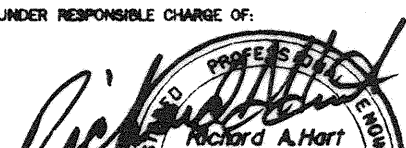
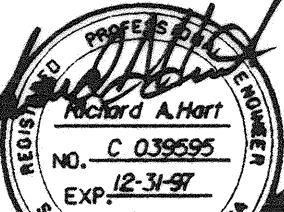
RECOMMENDED FOR APPROVAL - SMMWD

DISTRICT ENGINEER *David N. Jones*

NOE 79535 (EXP. 12/31/97)

**HNTB**

36 EXECUTIVE PARK  
SUITE 200  
IRVINE, CALIFORNIA 92614

		8/97		MODIFICATION OF 16" FAC. BY SMWD-ADD 24" CASING	
MARK		DATE		DESCRIPTION	
REVISIONS					
PREPARED UNDER RESPONSIBLE CHARGE OF:					
<div style="display: flex; align-items: center;">   </div>					
RICE RICHARD A. HART RCE 39695 (EXP. 12-31-97)					

ORANGE COUNTY PUBLIC FACILITIES AND RESOURCES DEPT.			
ANTONIO PARKWAY WILDLIFE UNDERCROSSING			
SMWD UTILITY DETAILS NO.1			
DESIGNED: <u>Wendy W. Li</u>		SHEET	
DRAWN: <u>WHL/SAW</u>		CHECKED: <u>Sanitizer</u>	
SCALE		DATE	
AS SHOWN		DRAWING NO.	

15/20  
 49  
 OF 64

DR. S. (76166)