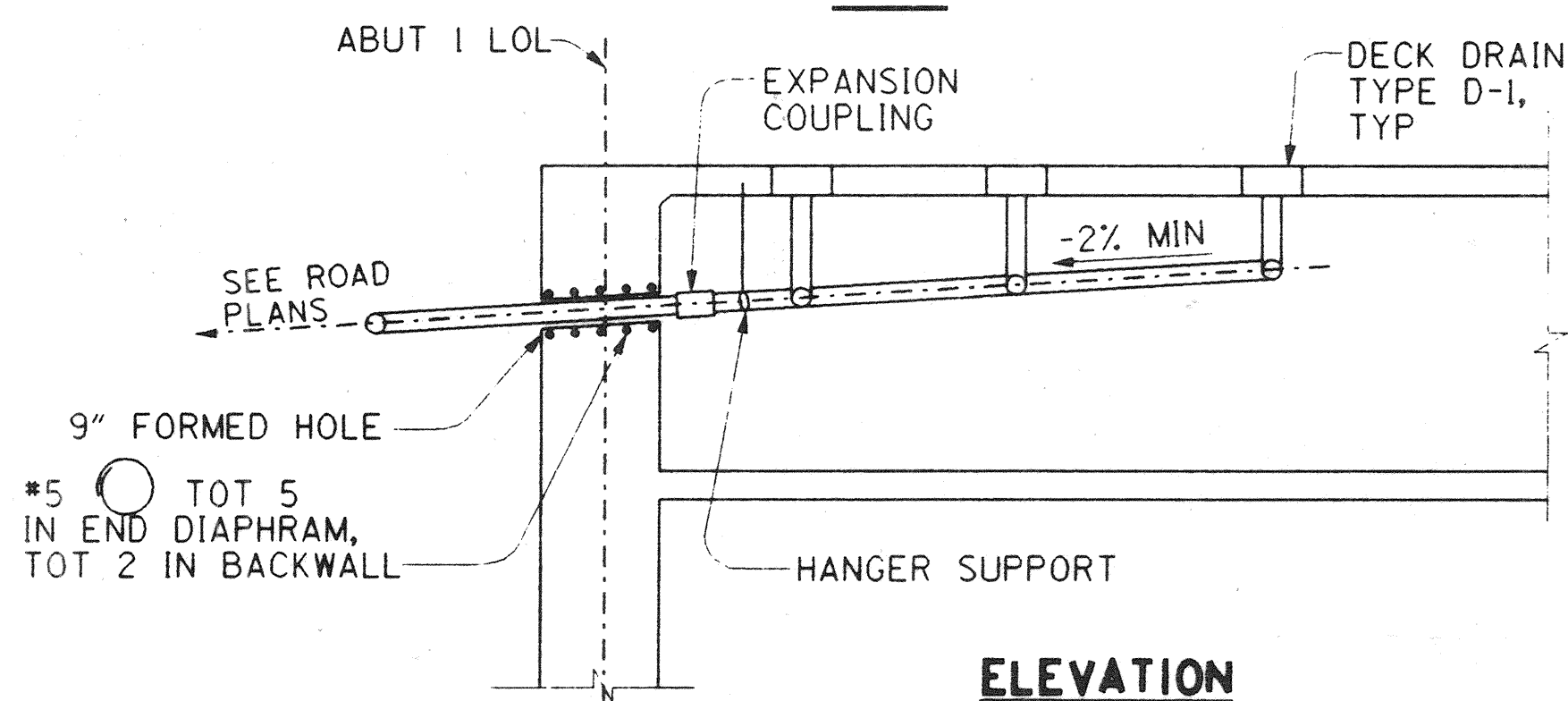


PLAN



ELEVATION

### DRAINS NEAR ABUTMENT 1

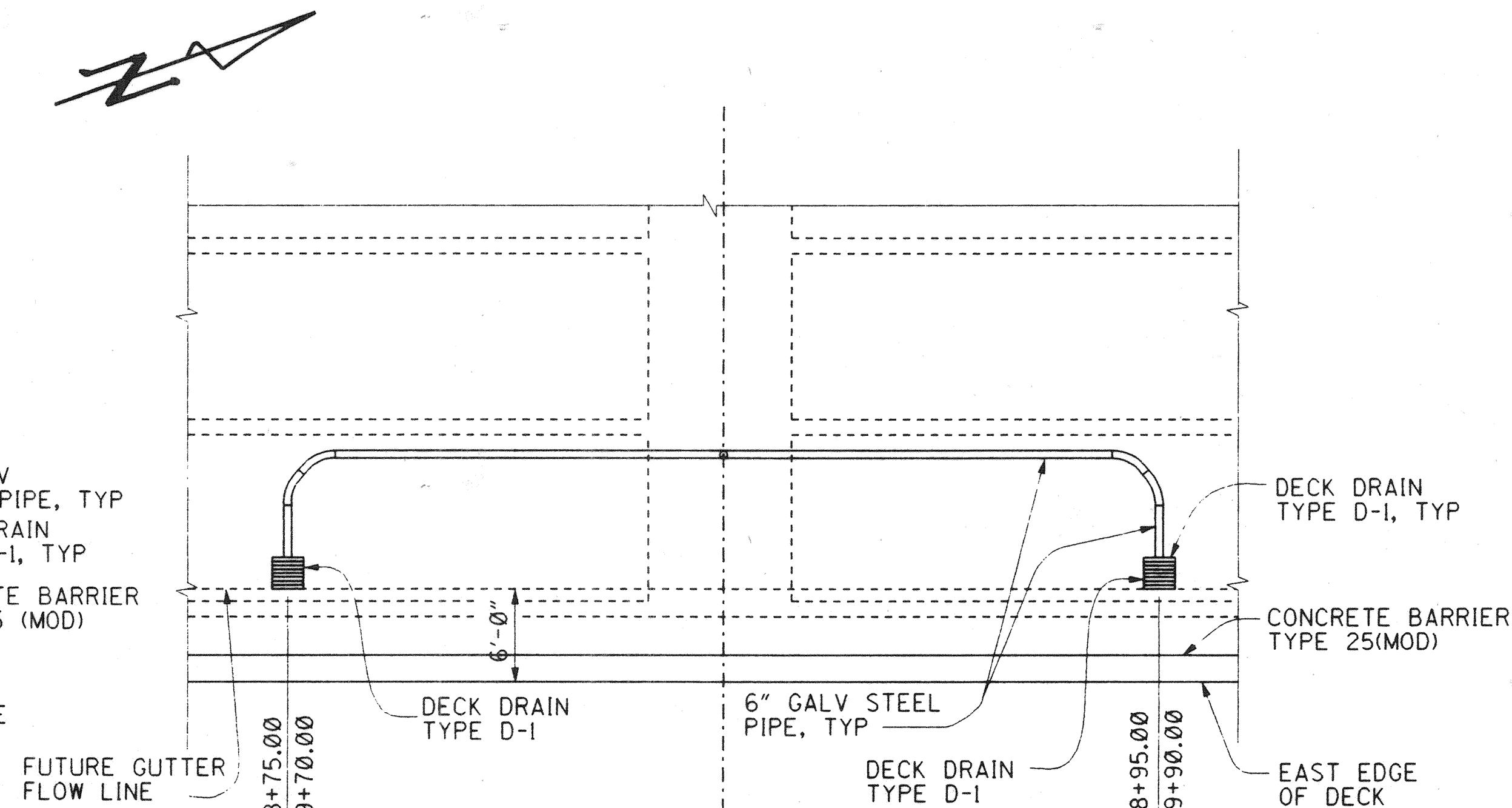
NOT TO SCALE

NOTES:

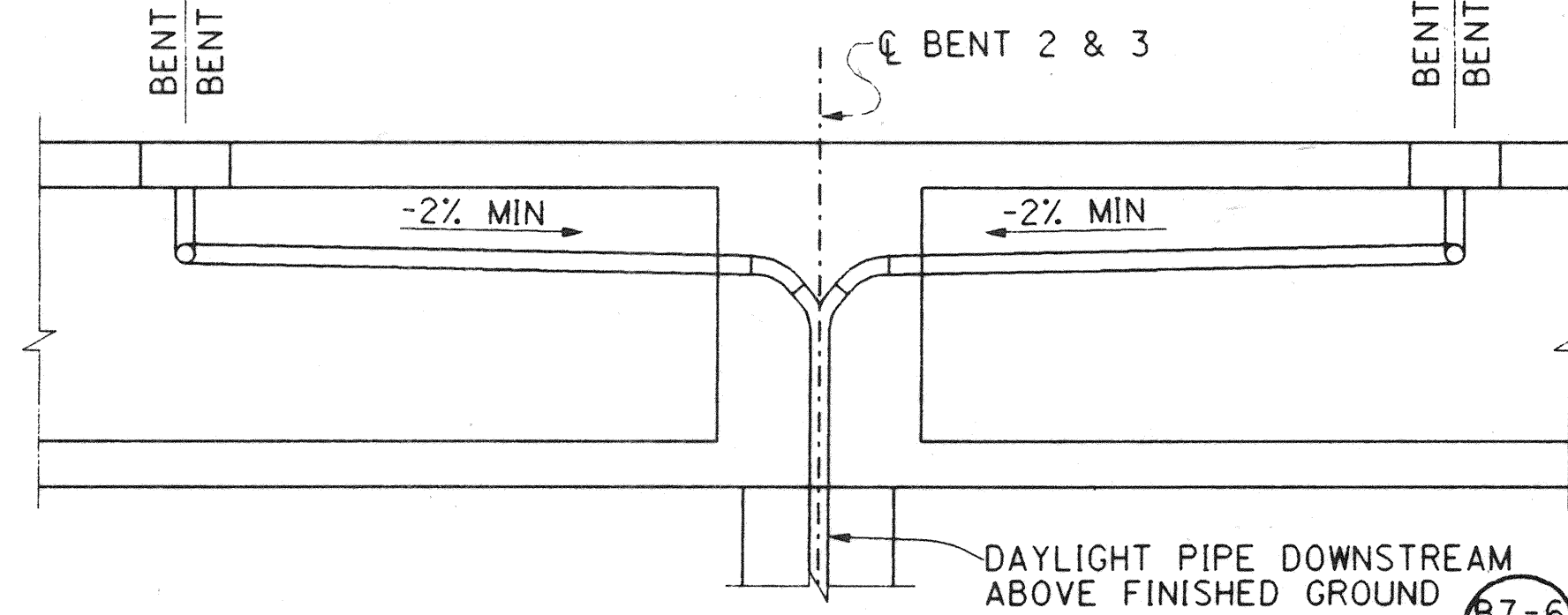
1. FOR DETAILS AND INFORMATION NOT SHOWN, SEE B7-6

2. ALL EXPANSION COUPLING HARDWARE TO BE GALVANIZED.

B7-6



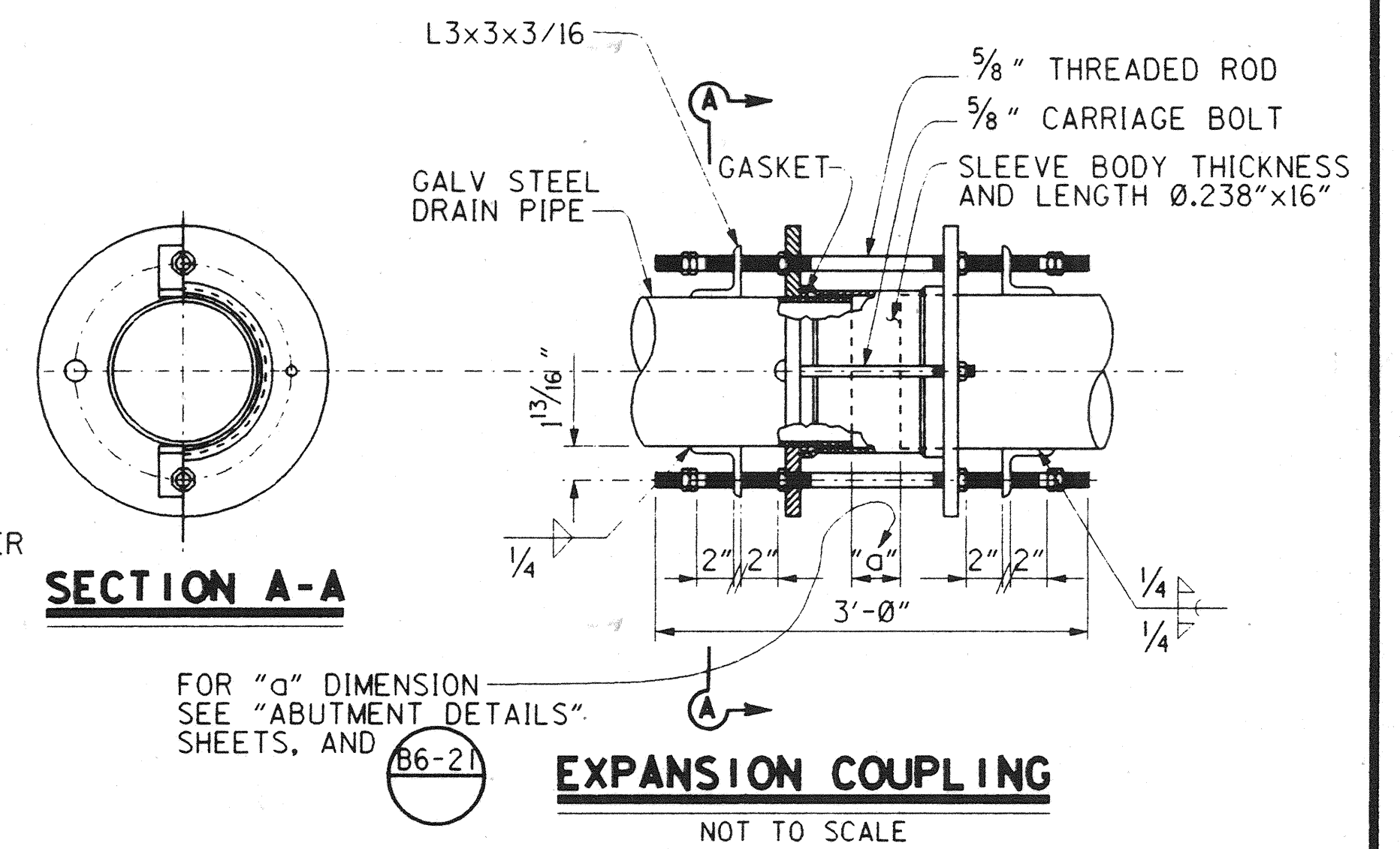
PLAN



ELEVATION

### DRAINS NEAR BENT 2 & 3

NOT TO SCALE

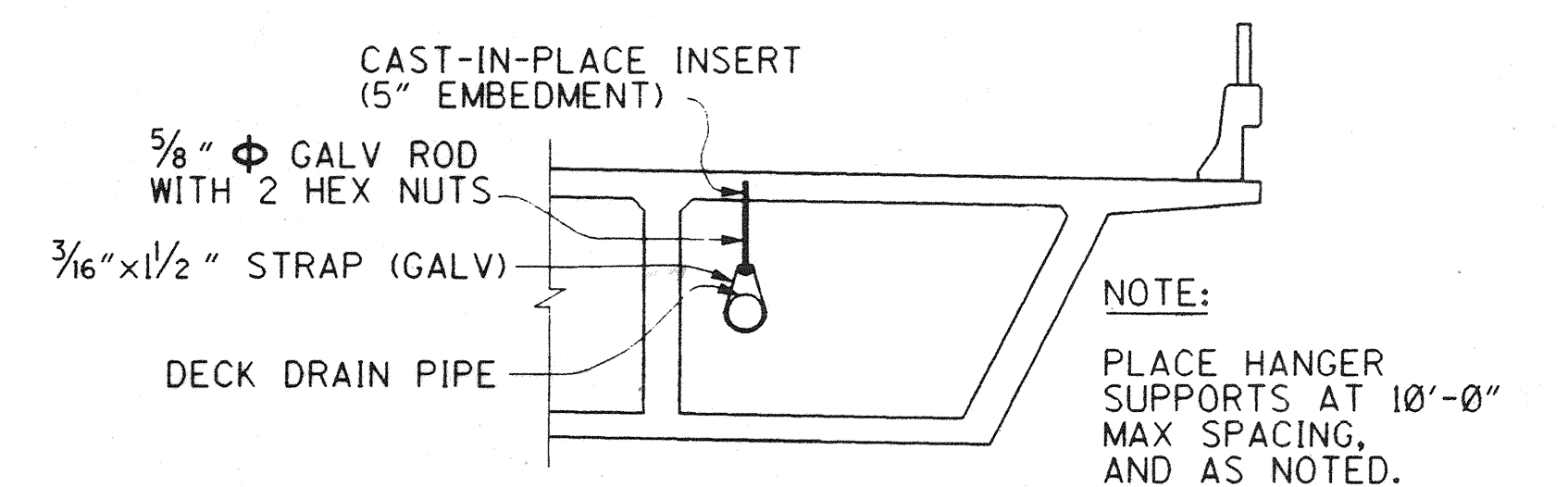


SECTION A-A

FOR "a" DIMENSION SEE "ABUTMENT DETAILS" SHEETS, AND B6-21

### EXPANSION COUPLING

NOT TO SCALE



### HANGER SUPPORT DETAILS

NOT TO SCALE

DR. 5 (16160)  
Sheet 48 OF 64

RECORD DRAWING

1/2" = 1' on original drawing

NOTE  
THE CONTRACTOR SHALL VERIFY ALL CONTROLLING FIELD DIMENSIONS BEFORE ORDERING OR FABRICATING ANY MATERIAL.

PLANS PREPARED BY:

**HNTB**

36 EXECUTIVE PARK  
SUITE 200  
IRVINE, CALIFORNIA 92614

ORANGE COUNTY PUBLIC FACILITIES AND RESOURCES DEPT.		ANTONIO PARKWAY WILDLIFE UNDERCROSSING	
DESIGNED: Wendy W. Li		SHEET 48 OF 64	
DRAWN: L. West		CHECKED: S. Whitaker	
SCALE: AS SHOWN		DATE: 12/31/97	
DRAWING NO.		DATE: 12/31/97	

DR. 5 (16160)