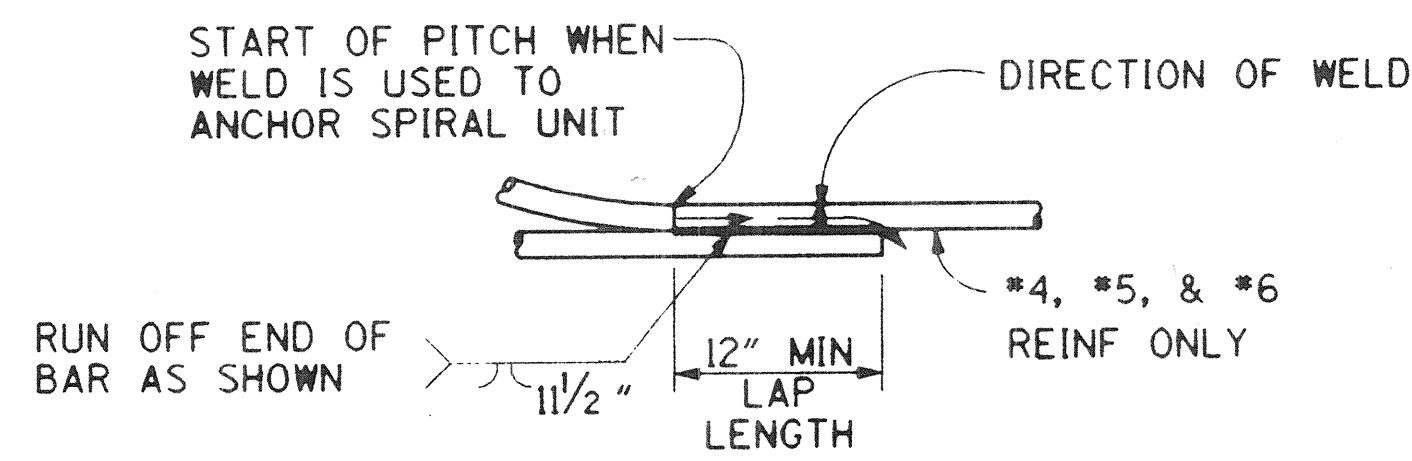


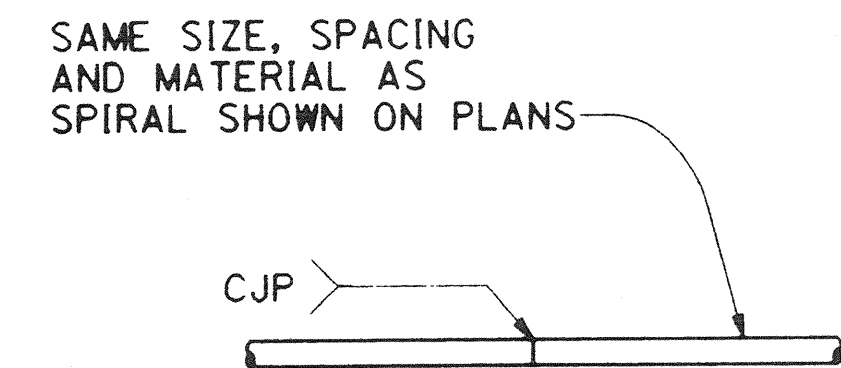
- NOTES:**
1. BUTT WELD TO BE MADE FIRST.
  2. BUTT WELD TO BE MADE IN FLAT OR HORIZ POSITION.
  3. LAP BAR TO BE CENTERED ON SPLICE.
  4. FLARE WELD TO BE MADE IN DIRECTION SHOWN.
  5. LAP BAR EQUAL SIZE TO SPIRAL BAR.

**VEE GROOVE WELDED SPLICE**



**NOTE:**  
FLARE WELD TO BE MADE IN DIRECTION SHOWN

**WELDED LAP SPLICE AND ANCHOR**



INDIVIDUAL HOOPS, MADE CONTINUOUS WITH 100% PENETRATION WELDS, MAY BE SUBSTITUTED FOR SPIRALS.

**BUTT WELDED CONTINUOUS HOOP**

**BAR SPIRAL SPLICE & SPIRAL ANCHOR AND HOOP DETAIL**

NOT TO SCALE

DR. 5 (16160)  
Sheet 44 OF 64

**RECORD DRAWING**

1/2" = 1'-0"  
3 inches on original drawing

**NOTE**  
THE CONTRACTOR SHALL VERIFY ALL CONTROLLING FIELD DIMENSIONS BEFORE ORDERING OR FABRICATING ANY MATERIAL.

PLANS PREPARED BY:  
**HNTB** 36 EXECUTIVE PARK  
SUITE 300  
IRVINE, CALIFORNIA 92614

ORANGE COUNTY PUBLIC FACILITIES AND RESOURCES DEPT. ANTONIO PARKWAY WILDLIFE UNDERCROSSING	
BENT DETAILS NO. 3	
10/20	
DESIGNED BY: <u>W. U.</u>	
CHECKED BY: <u>W. U.</u>	
SCALE: <u>AS SHOWN</u>	DATE: <u>10/20</u>
DRAWING NO. <u>44</u>	
OF 64	

DR. 5 (16160)